

Dark Academia

CUSTOM CARPET

Tarkett Hospitality
285 Kraft Drive
Dalton, GA 30721
800.871.3211
www.tarketthospitality.com

© 2023 Tarkett Hospitality 11/23

 **Tarkett** Hospitality

Dark Academia Collection

Mood + Mystery

A place is how it makes you feel. The flickers of emotion sparked in your mind, conjuring mood and memory. At its most compelling, a space draws us in by illuminating something deep within us. And the deeper you go, the more you find.

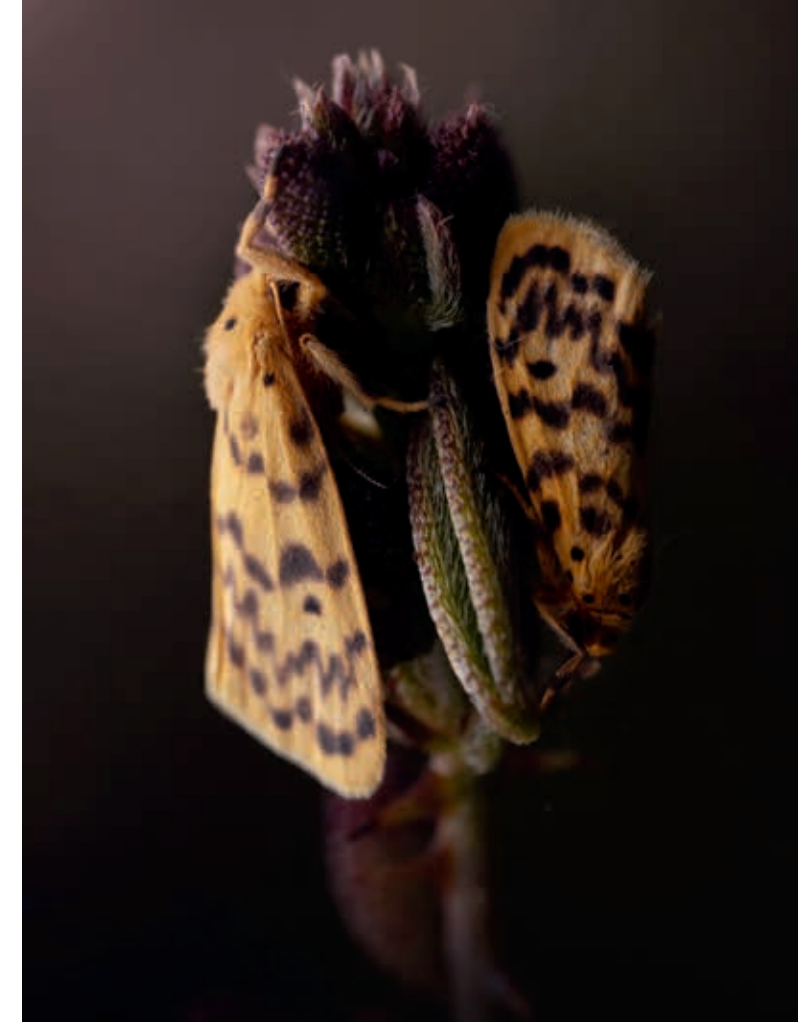
With Dark Academia, we explore the moods and mysteries that lie beneath the surface of experience. We lose ourselves in the hidden, intricate side of nature, drawn in by strange and wondrous forms. Studies of fragile insects, winding foliage and fragments of stained glass become a journey into exquisite patterns, rendered with striking beauty in premium carpet. And as we follow the allure of the unusual, who knows where we may find ourselves?

Our new collection infuses hospitality spaces with a dramatic edge, exploring a full breadth of emotions. Dark Academia immerses guests in a luxurious experience while conjuring deep layers of creativity and inspiration. With unique and unexpected aesthetics, the collection creates a memorable destination that will draw guests back again and again.



CUSTOMIZABLE

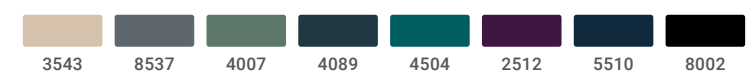
Designers can choose from Axminster woven, Digital Dye Injection (DDI), or tufted constructions, along with a variety of fiber types, textures, colors, and pile weights. The designs can also be made into custom rugs to enhance guest rooms, lobbies, and other open spaces.



The 13 patterns can be customized to fit specific budget and project requirements.

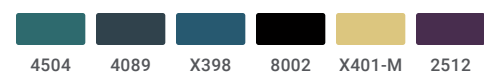


Dark Academia I | DKA01, Color 331
Legacy Plus





Dark Academia II | DKA02, Color 378
Intrepid



4504 4089 X398 8002 X401-M 2512



Dark Academia III | DKA03, Color 869
Intrepid



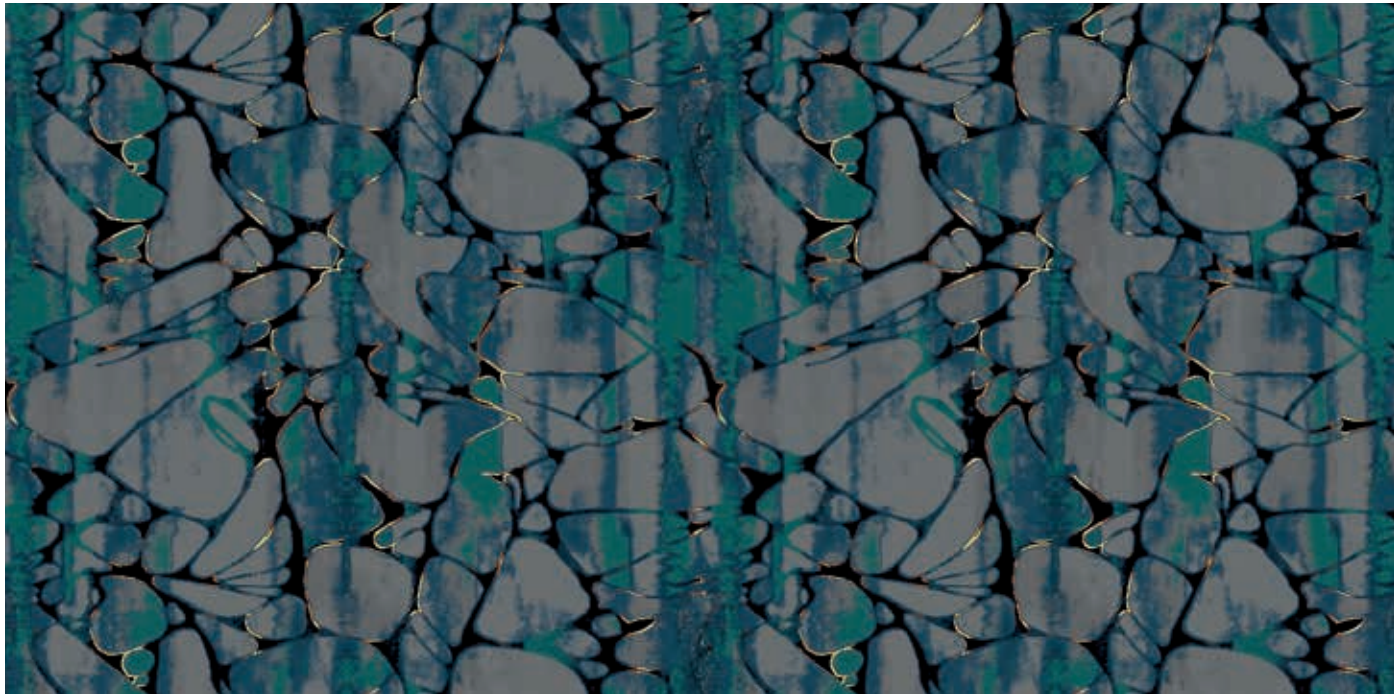
8537 2512 8002 8537 4504 5510 X398



Dark Academia V | DKA05, Color 891
Vivid Plus



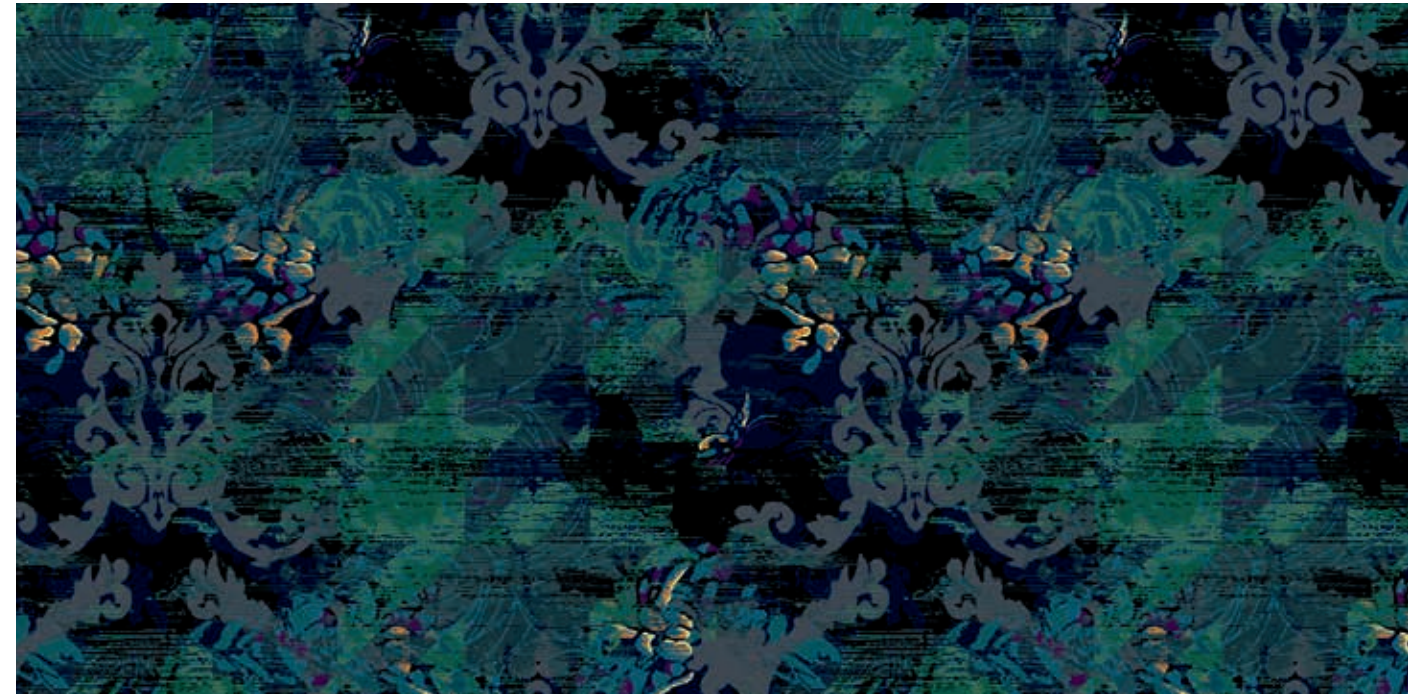
5510 2512 8002 8536 3543 8537 4089



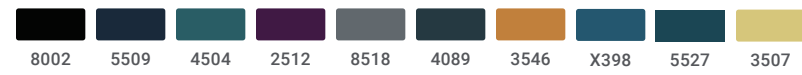
Dark Academia IV | DKA04, Color 634
Intrepid



3546 8537 5510 8002 X401-M 8537 4504













Dark Academia VI | DKA06, Color 369
Vivid



8002 5509 4504 2512 8518 4089 3546 X398 5527 3507

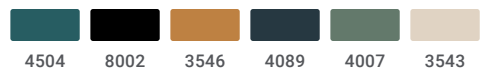


Dark Academia VII | DKA07, Color 689
Vivid

- | | | | | | | | | | |
|---|---|---|---|---|---|---|---|---|---|
|  |  |  |  |  |  |  |  |  |  |
| 8002 | 5510 | 2512 | 8537 | 4089 | 3546 | X398 | 5527 | 4504 | X401-M |

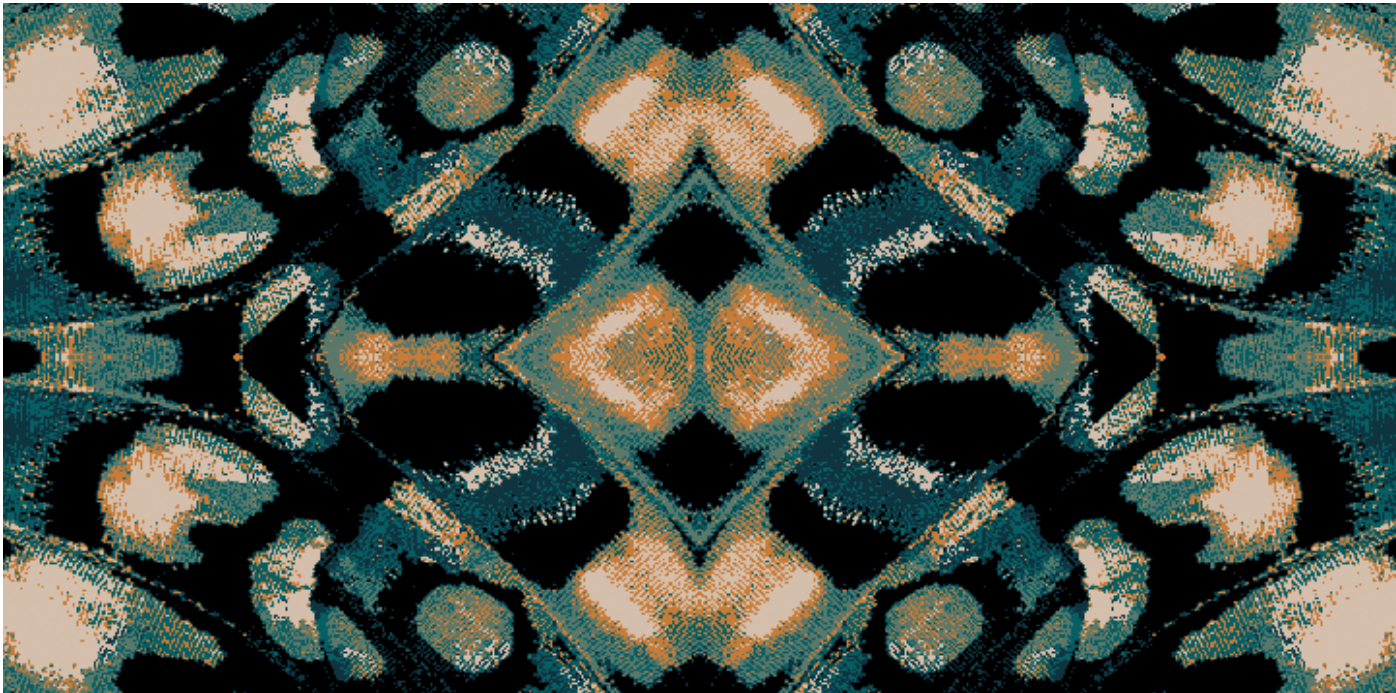


Dark Academia VIII | DKA08, Color 349
Vivid

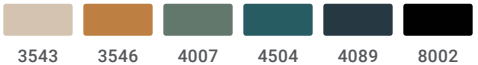




Dark Academia IX | DKA09, Color 931
Dynamics



Dark Academia X | DKA10, Color 843
Legacy Plus (Available in Intrepid, Dark Academia XIV, DKA14, Color 493)





Dark Academia XI | DKA11, Color 361
DDI

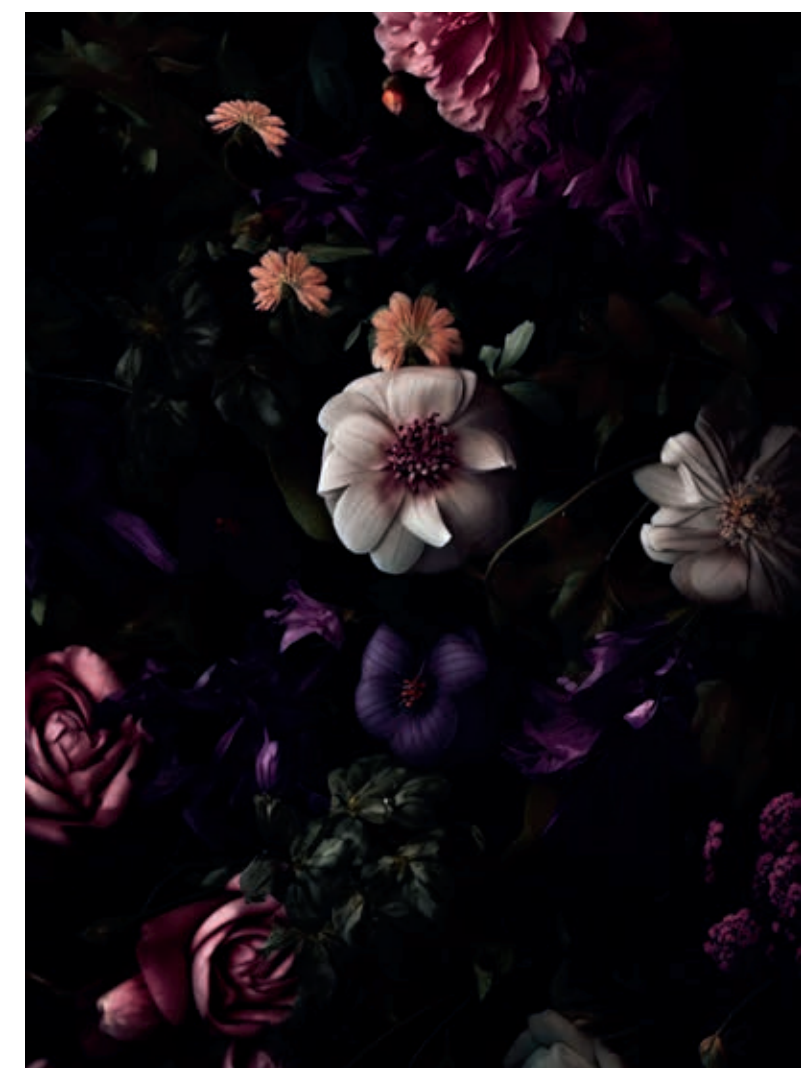


Dark Academia XII | DKA12, Color 873
DDI





Dark Academia XIII | DKA13, Color 365
Legacy Plus



Tailored Solutions

Flooring That Fits Your Needs

Tarkett Hospitality offers an industry-leading range of carpet constructions that make it easy to customize your floor to fit your needs. Your carpet will deliver the right look, the right performance level for the space and the right price point.

Your experience will be easy as well, because all of our designers are experts in designing for every type of construction. You will work with one designer for your entire project, no matter which carpet construction you choose.

Customize any of our soft surfaces, or choose a beautiful running line design. With an array of hard surface products to complement your carpet and complete the space, you are assured the right solution for every project.



COLOR & DETAIL



Axminster/Sculpt

Endless design possibilities in a luxurious woven construction, made with premium wool and nylon. Our carpet provides superior beauty, crisp clarity and exceptional longevity. With our Sculpt technology, you can also enhance your design with multilevel texturing and depth.
Compare to: Axminster (Woven)

Vivid

Richly textured, beautifully defined patterns with high durability. Choose Vivid to create striking designs in up to 12 colors – the cut and loop tufted construction can deliver the effect of 24 colors, for patterns that are wondrously complex, textured and precise.
Compare to: High Definition CYP

DDI (Digital Dye Injection)

Unlimited pattern potential in a durable tufted construction. Your design is deeply injected into the carpet base, with controlled color placement that creates a clear, precise pattern. Choose from cut pile or one of three cut and loop textures for added dimension.
Compare to: Print or Injection Dye

Legacy Plus

Detailed, clean patterns delivering both design flexibility and high performance to enhance any public space. Our Legacy Plus construction provide plush comfort and an opulent aesthetic that beautifies ballrooms and busy corridors equally well.
Compare to: CYP (All cut, 36 oz)

Intrepid

For well-appointed mid-size public spaces and guest rooms, in a cut and loop construction that enhances the texture of your design. With its high face weight and precise patterning, the Intrepid construction gives spaces a feeling of luxury underfoot.
Compare to: Colorpoint, CYP Textured

Dynamics

A beautiful balance of design, durability and value to suit any area, from guest rooms up to large public spaces. Dynamics provides an incredible range of tonal design possibilities, as well as an infinite play in pile heights to give spaces rich textural depth.
Compare to: Infinity

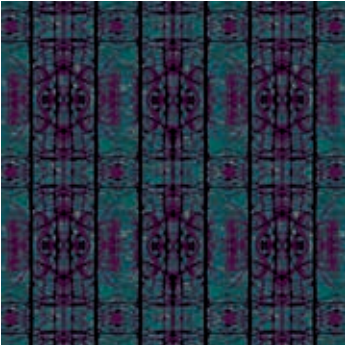


	COLORS	PRICE	USAGE	OUNCE WEIGHT	LEAD TIME*	MINIMUM ORDER	TEXTURE
	16	\$\$\$\$	All Public Spaces Guest Rooms	2 & 3 ply in 7-10 row		500 SY	All Cut
	12	\$\$\$\$	Corridors Rugs All Public Spaces Smaller Rooms	42 - 48 oz		250 SY	Cut & Loop
	14	\$\$\$	All Public Spaces Guest Rooms	36 oz		250 SY	All Cut OR Textured Base
	4-8	\$\$\$	Corridors Guest Rooms Small-Mid Sized Public Spaces Ballrooms/Large Public Spaces	36 - 44 oz		250 SY	All Cut
	4-6	\$\$	Mid Sized Public Spaces High-End Guest Rooms Corridors	36 - 42 oz		250 SY	Cut & Loop
	4	\$\$	Mid Sized Public Spaces Guest Rooms Corridors	32 - 36 oz		250 SY	Cut & Loop

* Lead times are approximate and may vary.



Dark Academia Custom Carpet



DARK ACADEMIA I | DKA01, COLOR 331

DARK ACADEMIA II | DKA02, COLOR 378

Construction: Legacy Plus
Fiber Content: Lextron Enviro-Green Nylon
Dye Method: 100% Solution Dyed
Tufted Pile Weight: 36 oz. Per Sq. Yard
Finished Pile Height: .250"
Quality: 10 Stitches Per Inch
Primary Backing: Woven Polypropylene
Secondary Backing: Unitary
Total Weight: 72 oz.
Standard Width: 12 ft.
Pattern Repeat: 72 in W x 85.6 in L

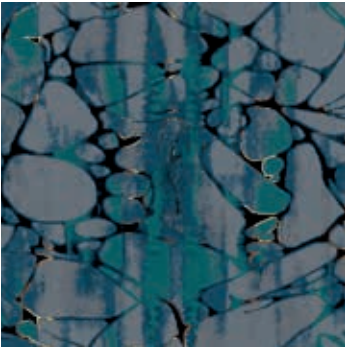
Construction: Intrepid
Fiber Content: Lextron Enviro-Green Nylon
Dye Method: 100% Solution Dyed
Tufted Pile Weight: 42 oz. Per Sq. Yard
Finished Pile Height: .250" High/.187" Med./.062" Low
Quality: 7 Stitches Per Inch
Primary Backing: Woven Polypropylene
Secondary Backing: Unitary
Total Weight: 78 oz.
Standard Width: 12 ft.
Pattern Repeat: 144 in W x 137.14 in L



**Dark Academia
LVT Coordinate**
Accore™ Tawny Chevron

With Accore™ luxury vinyl flooring, what you see is only the beginning of what you get. Discover better engineering in every detail—like heavy-duty resistance to high heels and rolling luggage, waterproof installation, and incredible comfort underfoot. But our favorite part of Accore™ is its quiet disposition—with an IIC rating of 68 that lets you welcome guests with a tranquil escape.

Accore™ Collection
Tawny Chevron 0020
7"x48" and 7"x60"



DARK ACADEMIA III | DKA03, COLOR 869

DARK ACADEMIA IV | DKA04, COLOR 634

Construction: Intrepid
Fiber Content: Lextron Enviro-Green Nylon
Dye Method: 100% Solution Dyed
Tufted Pile Weight: 42 oz. Per Sq. Yard
Finished Pile Height: .250"
Quality: 7 Stitches Per Inch
Primary Backing: Woven Polypropylene
Secondary Backing: Unitary
Total Weight: 78 oz.
Standard Width: 12 ft.
Pattern Repeat: 144 in W x 128.57 in L

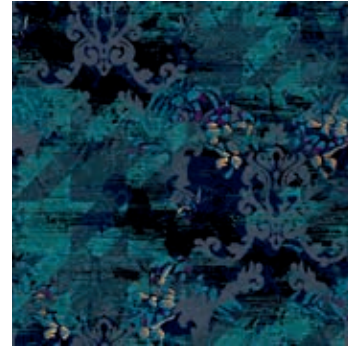
Construction: Intrepid
Fiber Content: Lextron Enviro-Green Nylon
Dye Method: 100% Solution Dyed
Tufted Pile Weight: 42 oz. Per Sq. Yard
Finished Pile Height: .250"
Quality: 7 Stitches Per Inch
Primary Backing: Woven Polypropylene
Secondary Backing: Unitary
Total Weight: 78 oz.
Standard Width: 12 ft.
Pattern Repeat: 72 in W x 74.29 in L

Dark Academia Custom Carpet



DARK ACADEMIA V | DKA05, COLOR 891

Construction: Vivid Plus
Fiber Content: Lextron Enviro-Green Nylon
Dye Method: 100% Solution Dyed
Tufted Pile Weight: 42 oz. Per Sq. Yard
Finished Pile Height: .281"
Quality: 11 Stitches Per Inch
Primary Backing: Woven Polypropylene
Secondary Backing: Unitary
Total Weight: 78 oz.
Standard Width: 12 ft.
Pattern Repeat: 72 in. W x 51 in. L



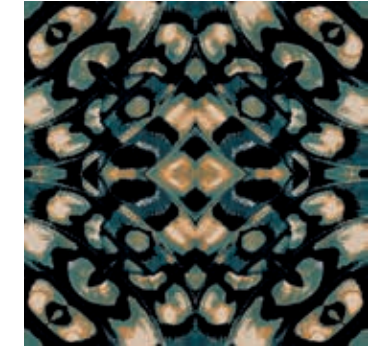
DARK ACADEMIA VI | DKA06, COLOR 369

Construction: Vivid
Fiber Content: Lextron Enviro-Green Nylon
Dye Method: 100% Solution Dyed
Tufted Pile Weight: 42 oz. Per Sq. Yard
Finished Pile Height: .281"
Quality: 11 Stitches Per Inch
Primary Backing: Woven Polypropylene
Secondary Backing: Unitary
Total Weight: 78 oz.
Standard Width: 15 ft.
Pattern Repeat: 99 in W x 90 in L



DARK ACADEMIA IX | DKA09, COLOR 931

Construction: Dynamics
Fiber Content: Lextron Enviro-Green Nylon
Dye Method: 100% Solution Dyed
Tufted Pile Weight: 32 oz. Per Sq. Yard
Finished Pile Height: .250"
Quality: 10 Stitches Per Inch
Primary Backing: Woven Polypropylene
Secondary Backing: Unitary
Total Weight: 68 oz.
Standard Width: 12 ft. or 15 ft.
Pattern Repeat: 18 in W x 21.6 in L



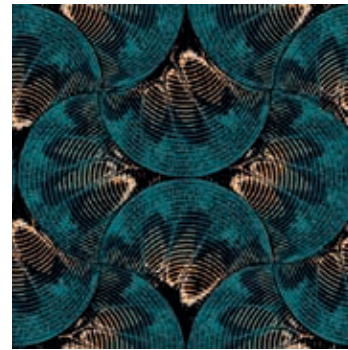
DARK ACADEMIA X | DKA10, COLOR 843

Construction: Legacy Plus (Available in Intrepid)
Fiber Content: Lextron Enviro-Green Nylon
Dye Method: 100% Solution Dyed
Tufted Pile Weight: 36 oz. Per Sq. Yard
Finished Pile Height: .250"
Quality: 10 Stitches Per Inch
Primary Backing: Woven Polypropylene
Secondary Backing: Unitary
Total Weight: 72 oz.
Standard Width: 12 ft.
Pattern Repeat: 72 in W x 72 in L



DARK ACADEMIA VII | DKA07, COLOR 689

Construction: Vivid
Fiber Content: Lextron Enviro-Green Nylon
Dye Method: 100% Solution Dyed
Tufted Pile Weight: 42 oz. Per Sq. Yard
Finished Pile Height: .281"
Quality: 11 Stitches Per Inch
Primary Backing: Woven Polypropylene
Secondary Backing: Unitary
Total Weight: 78 oz.
Standard Width: 15 ft.
Pattern Repeat: 90 in. W x 180 in. L



DARK ACADEMIA VIII | DKA08, COLOR 349

Construction: Vivid
Fiber Content: Lextron Enviro-Green Nylon
Dye Method: 100% Solution Dyed
Tufted Pile Weight: 42 oz. Per Sq. Yard
Finished Pile Height: .281"
Quality: 11 Stitches Per Inch
Primary Backing: Woven Polypropylene
Secondary Backing: Unitary
Total Weight: 78 oz.
Standard Width: 12 ft.
Pattern Repeat: 72 in. W x 72 in. L



DARK ACADEMIA XI | DKA11, COLOR 361

Construction: DDI
Fiber Content: Type 6 Nylon
Dye Method: Injection Dyed
Tufted Pile Weight: 36oz. Per Sq. Yard
Finished Pile Height: .250"
Quality: 13 Stitches Per Inch
Primary Backing: Woven Polypropylene
Secondary Backing: Print Base Action Bac
Total Weight: 72 oz.
Standard Width: 12 ft.
Pattern Repeat: 36 in W x 36 in L



DARK ACADEMIA XII | DKA12, COLOR 873

Construction: DDI
Fiber Content: Type 6 Nylon
Dye Method: Injection Dyed
Tufted Pile Weight: 36oz. Per Sq. Yard
Finished Pile Height: .250"
Quality: 13 Stitches Per Inch
Primary Backing: Woven Polypropylene
Secondary Backing: Print Base Action Bac
Total Weight: 72 oz.
Standard Width: 15 ft.
Pattern Repeat: 90 in W x 90 in L



DARK ACADEMIA XIII | DKA13, COLOR 365

Construction:	Legacy Plus
Fiber Content:	Lextron Enviro-Green Nylon
Dye Method:	100% Solution Dyed
Tufted Pile Weight:	36 oz. Per Sq. Yard
Finished Pile Height:	.250"
Quality:	10 Stitches Per Inch
Primary Backing:	Woven Polypropylene
Secondary Backing:	Unitary
Total Weight:	72 oz.
Standard Width:	12 ft.
Pattern Repeat:	48 in. W x 48 in. L



ACCORE™ COLLECTION | TAWNY CHEVRON 0020

Construction:	Rigid Core LVT
Total Thickness:	5 mm
Wear Layer Thickness:	20 mil
Edge Treatment:	Micro-Bevel
Material:	Phthalate Free, 100% Virgin Material
Reusable Content:	100% Reclaimable
Plank Size:	7" x 48" 7" x 60"
Installation:	Click, Drop Lock System
Sustainability:	FloorScore® and Assure™ Certification
Manufacturing:	Made in the USA

