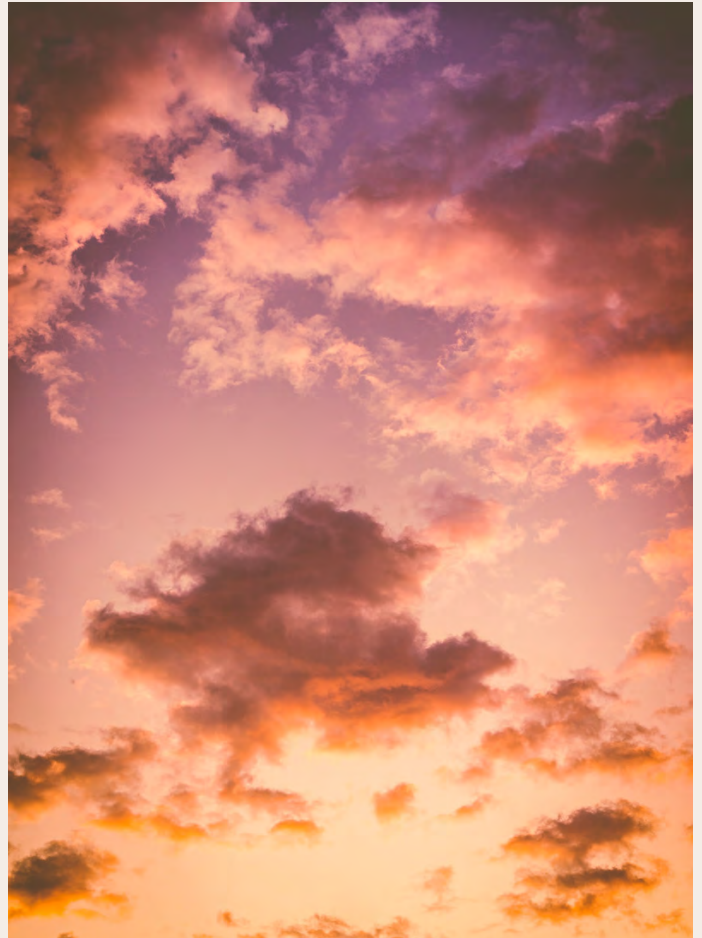




# TREND EDIT

FEBRUARY



## IRIDESCENT SUNSET

TARKETT HOSPITALITY

A CURATED COLLECTION OF TEXTILE  
DESIGNS INSPIRED BY THE WORLD  
AROUND US.

# INTRO

As artists and visually driven people, our design team is constantly drawing inspiration from the world around us. We curate elements and ideas that are trending and use those as inspiration for a monthly collection of custom patterns.

TARRETT HOSPITALITY





# IRIDESCENT SUNSET

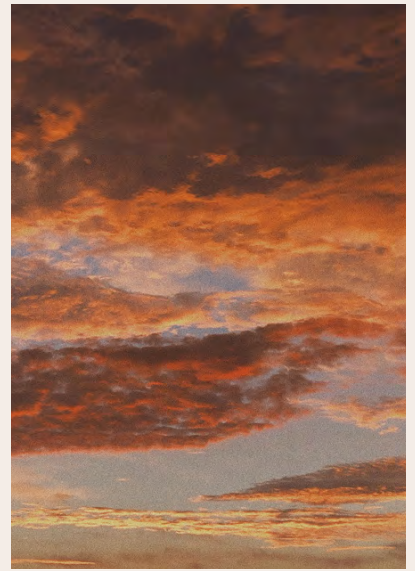
**Curated by Kristen Evans and Julia Burgess**

This month we continue on our journey of self-care and mindfulness with Iridescent Sunset. Gen Z emerges from the pandemic as teens and young adults bringing with them a new appreciation for self empathy.

They are an accepting generation focused on normalizing sensitivity and accepting themselves as well as others. Products and branding are emerging with dreamy soft focus color and non-gender specific aesthetics that appeal to this group. With light streaks, prismatic shapes and a dream-like color scheme, Iridescent Sunset has an ethereal vulnerability that can appeal to anyone looking for some sunshine.



TARKETT HOSPITALITY



INJ1090

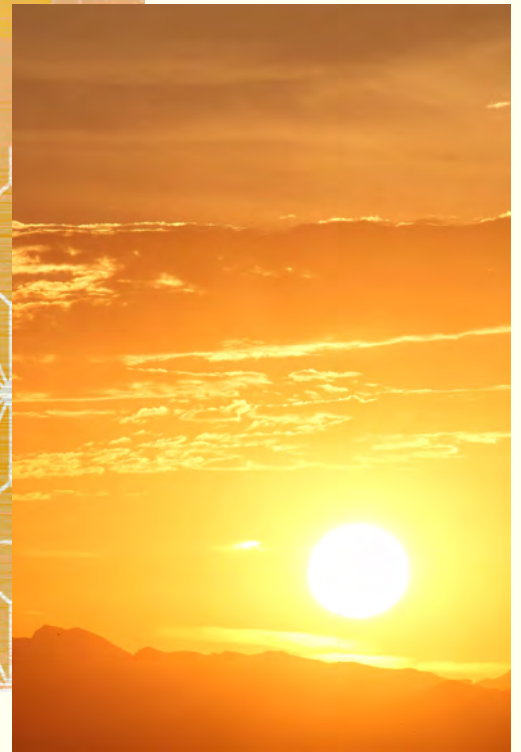
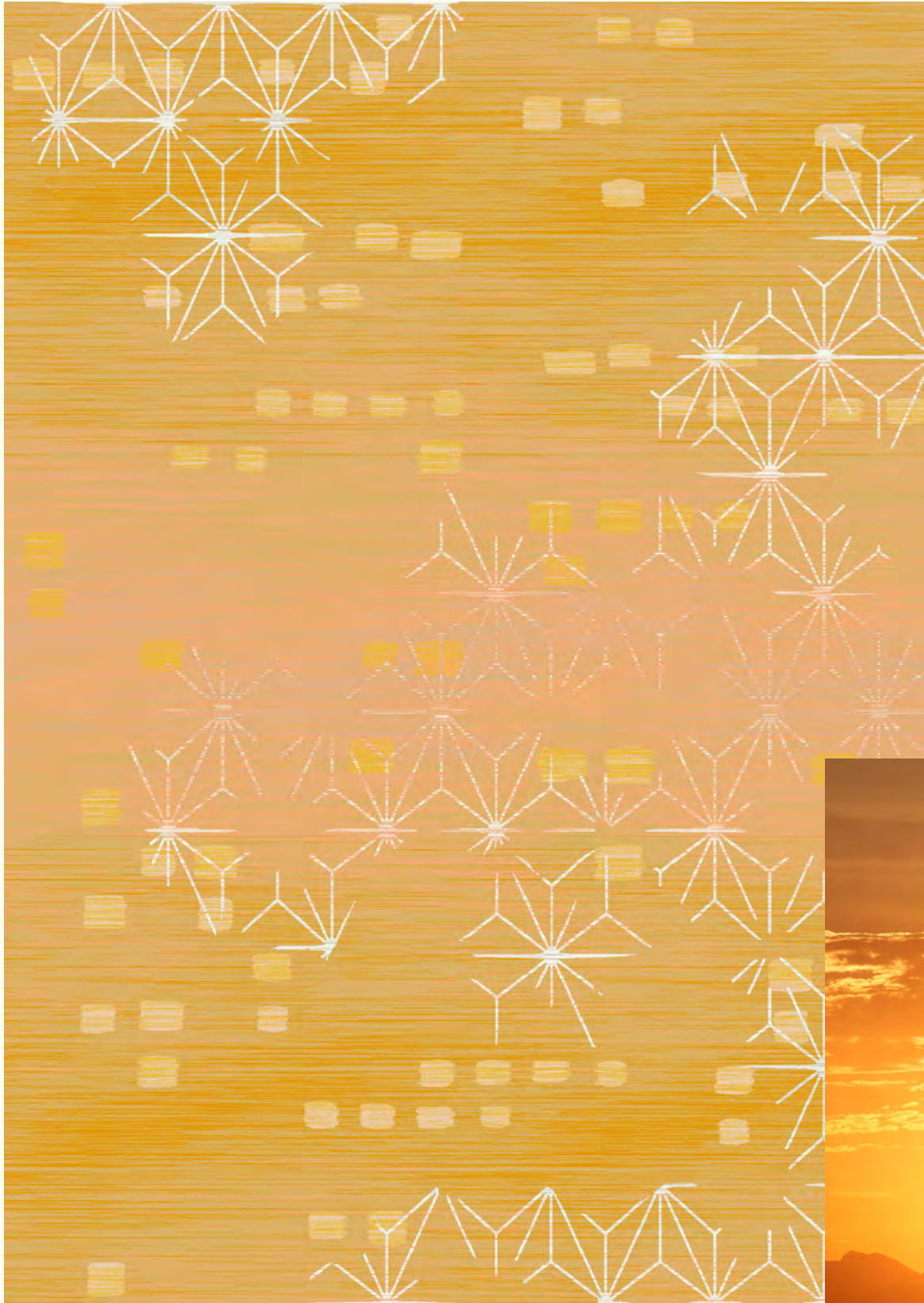




V1609

TARKETT HOSPITALITY

# CONCEPT TO CREATION

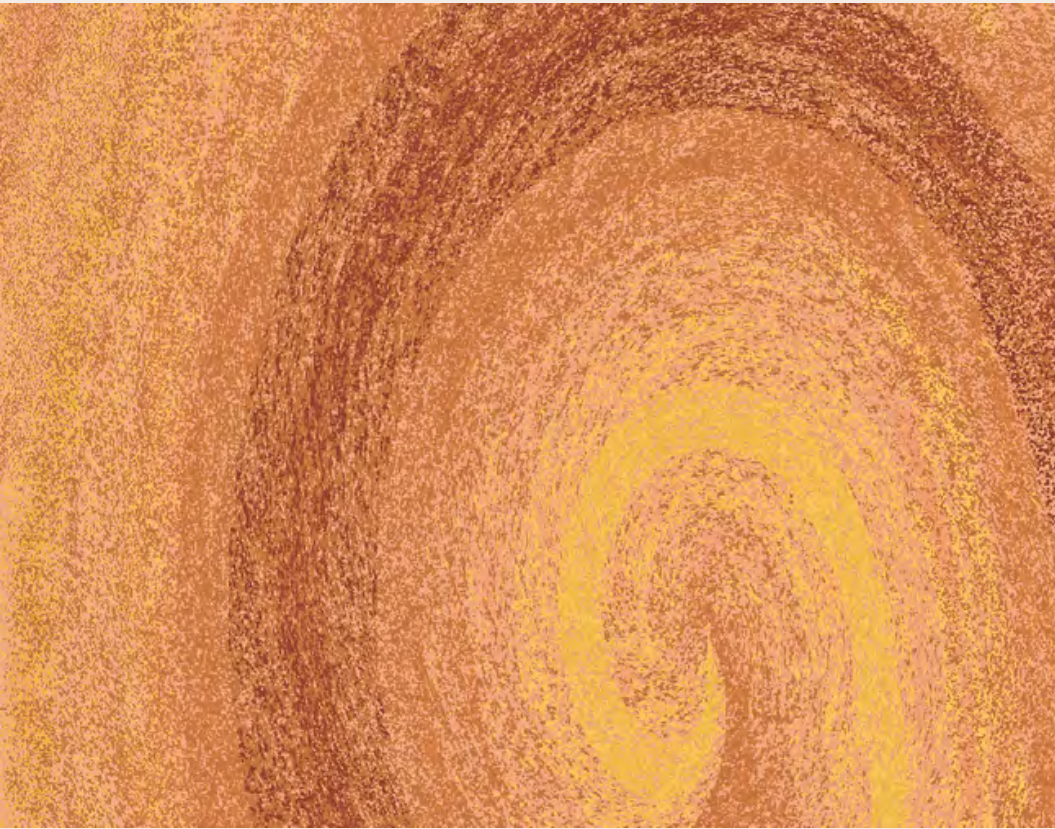


AX1830-8

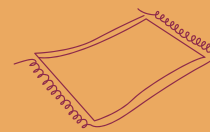
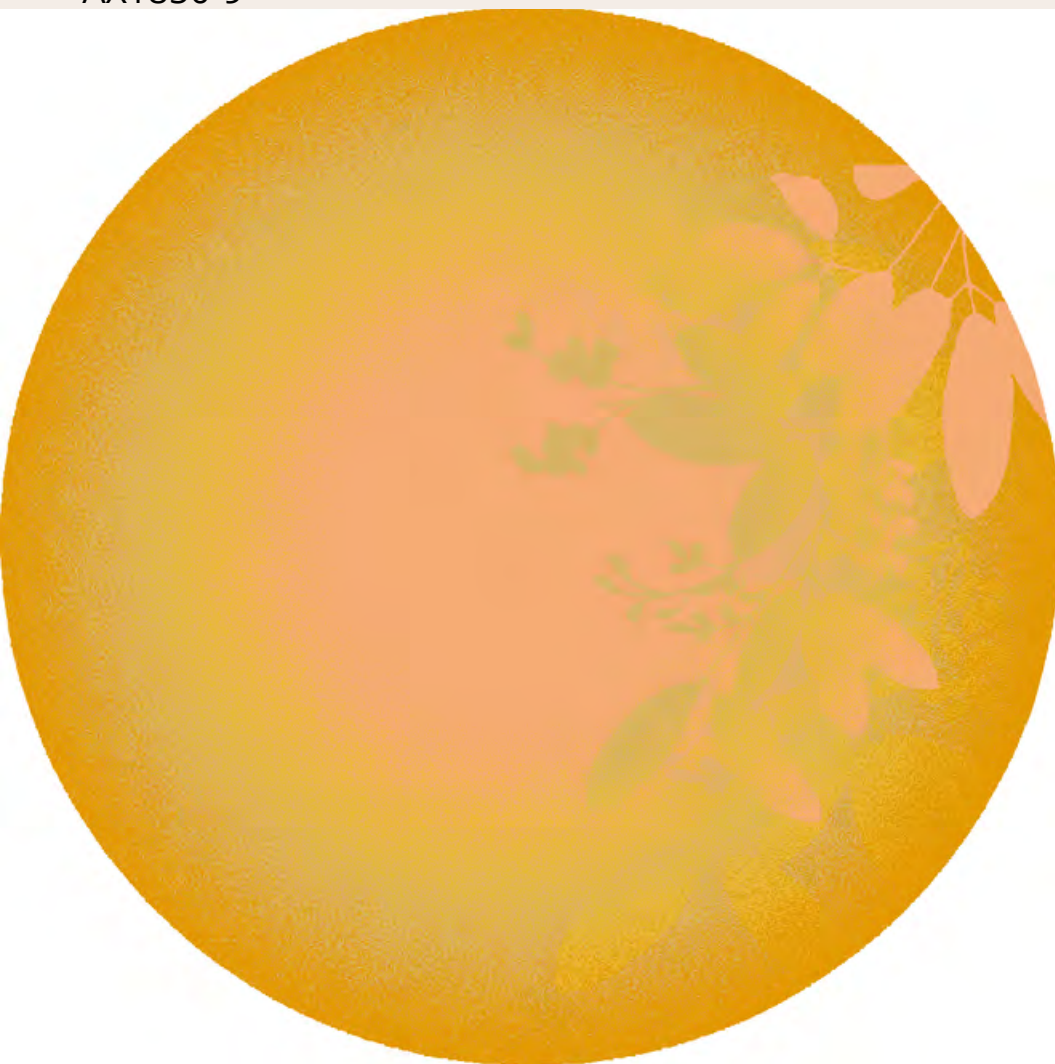
AX1831-8 - TARKETT HOSPITALITY



IN3130



AX1850-9



## AREA RUGS

Any pattern or construction can be made into an area rug. Binding and backing options available..





---

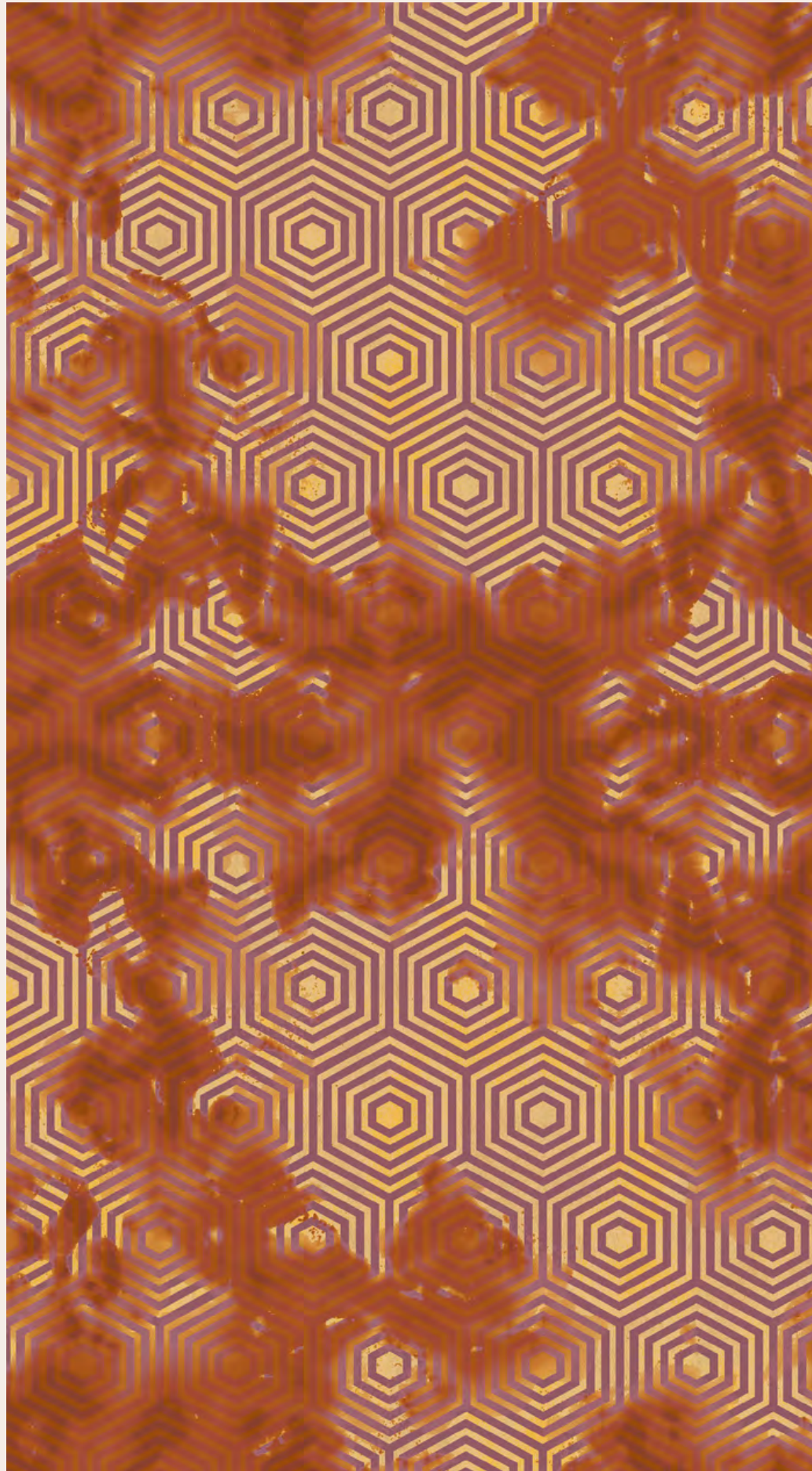
D5150  
GUESTROOM

# PATTERN PLAY

Mix and match into your own signature look

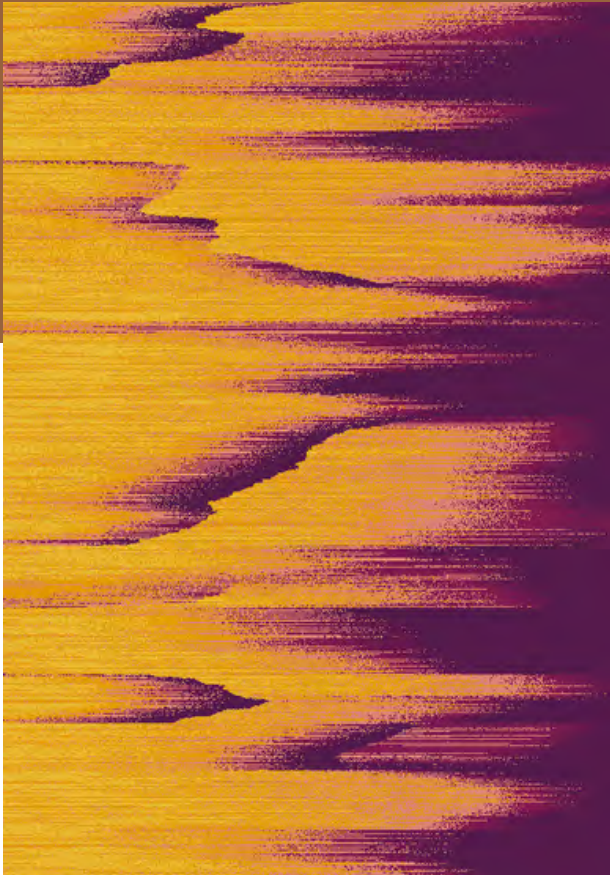


v1615



v1610

TARKETT HOSPITALITY



AX1862-7



AX1859-7

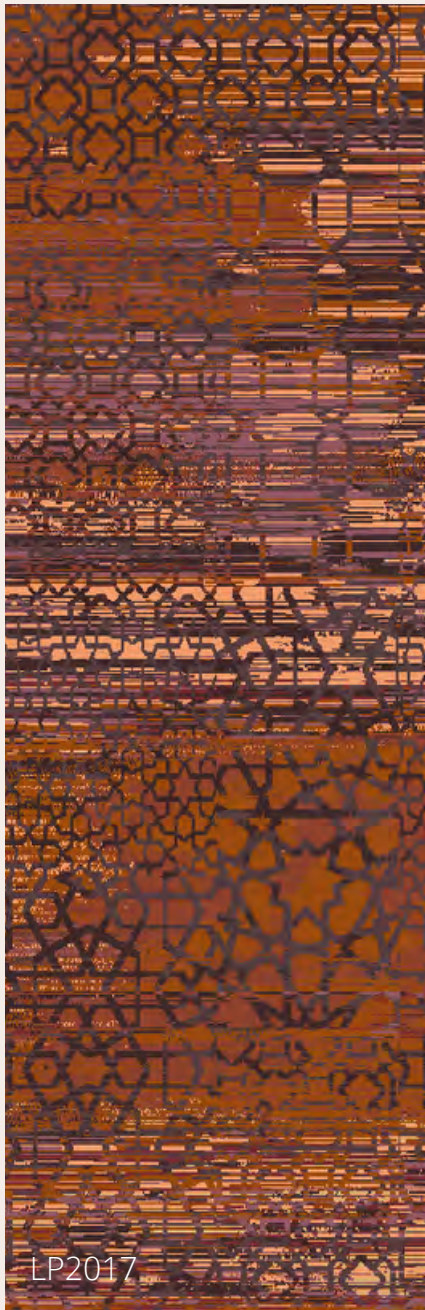
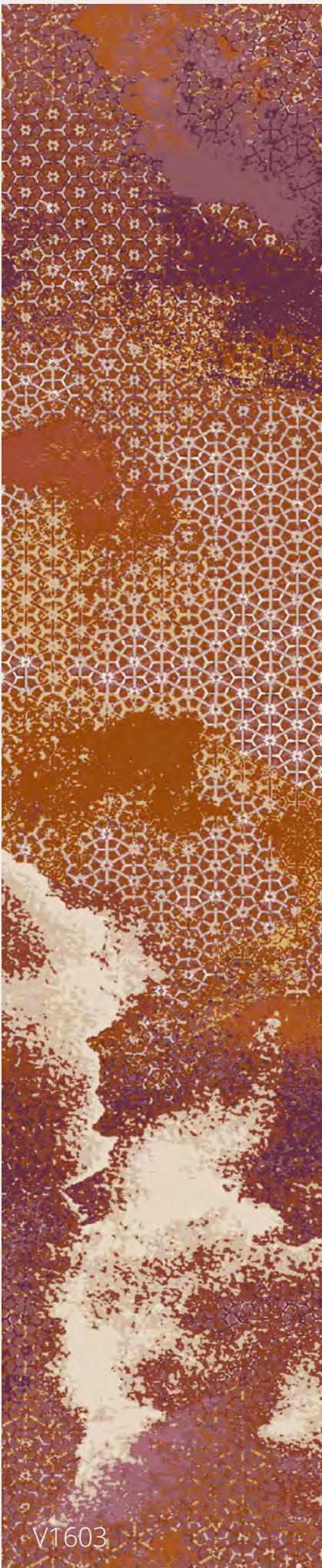


AX1861-8

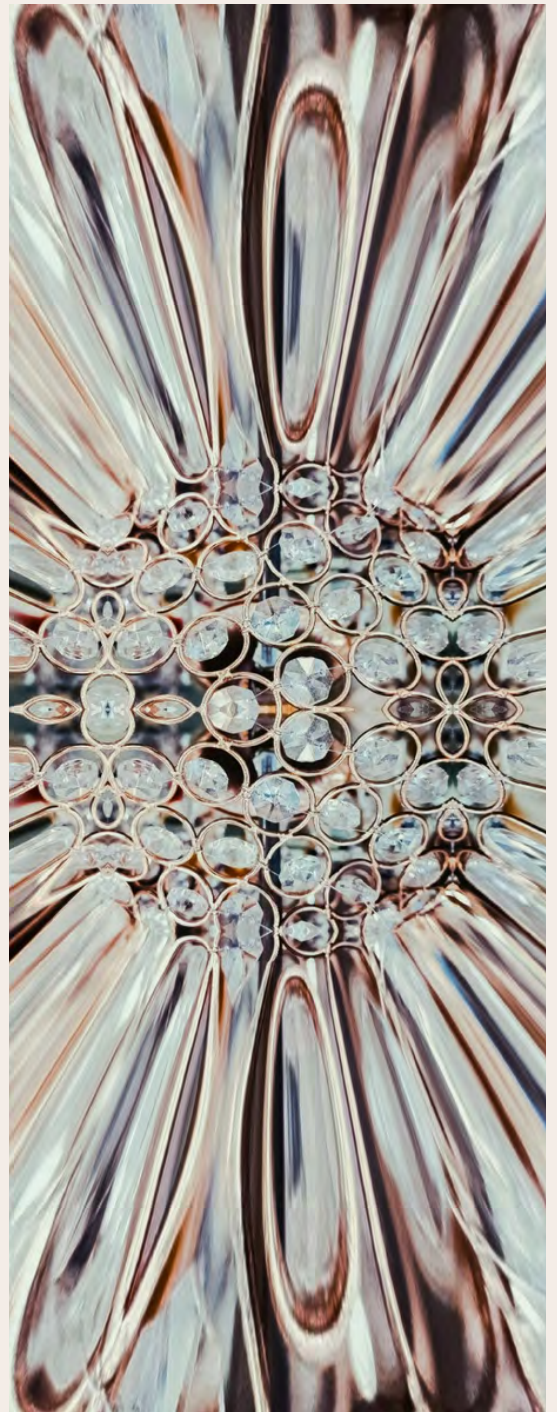
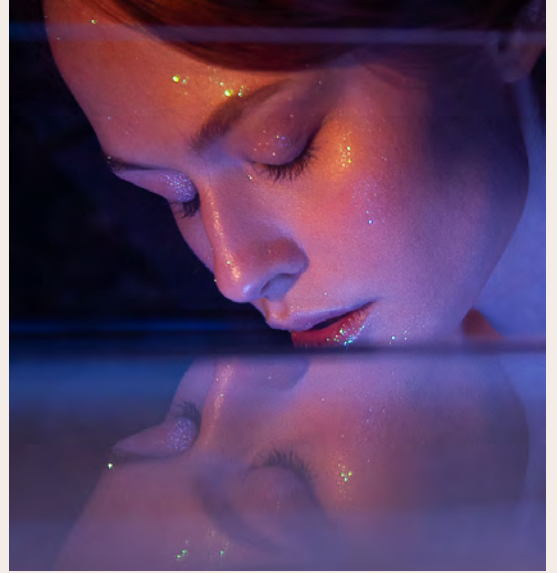
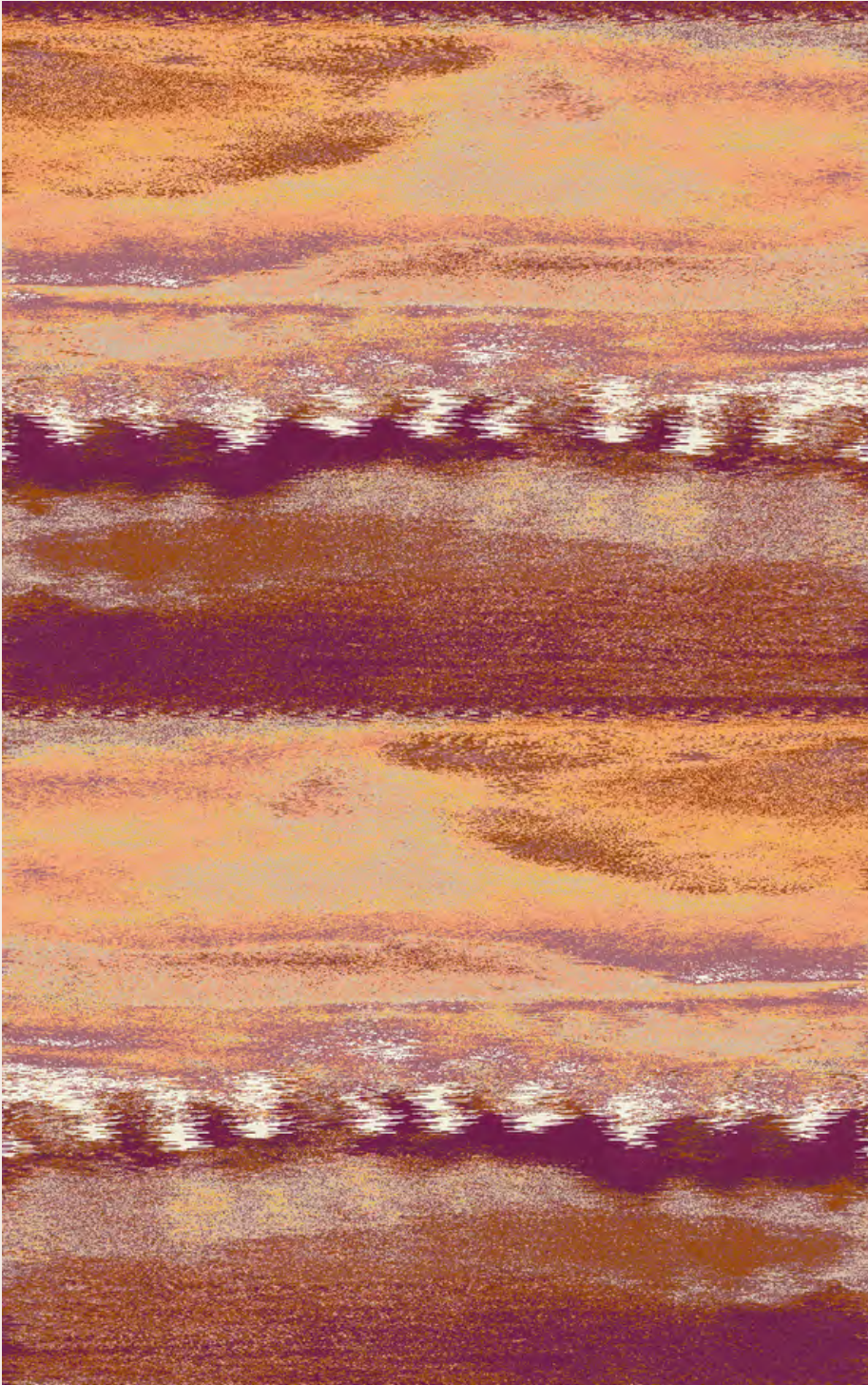


AX1854-9



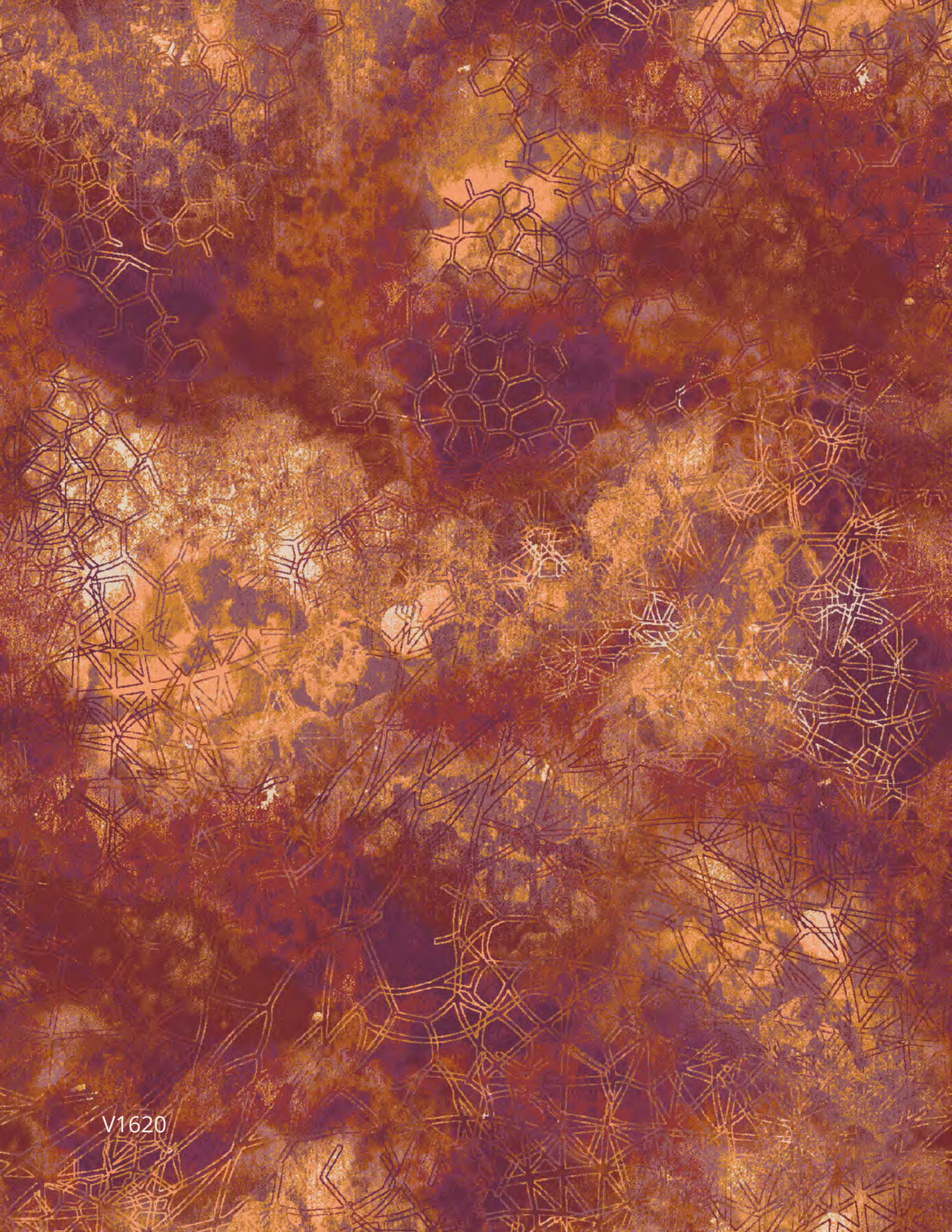


V1619

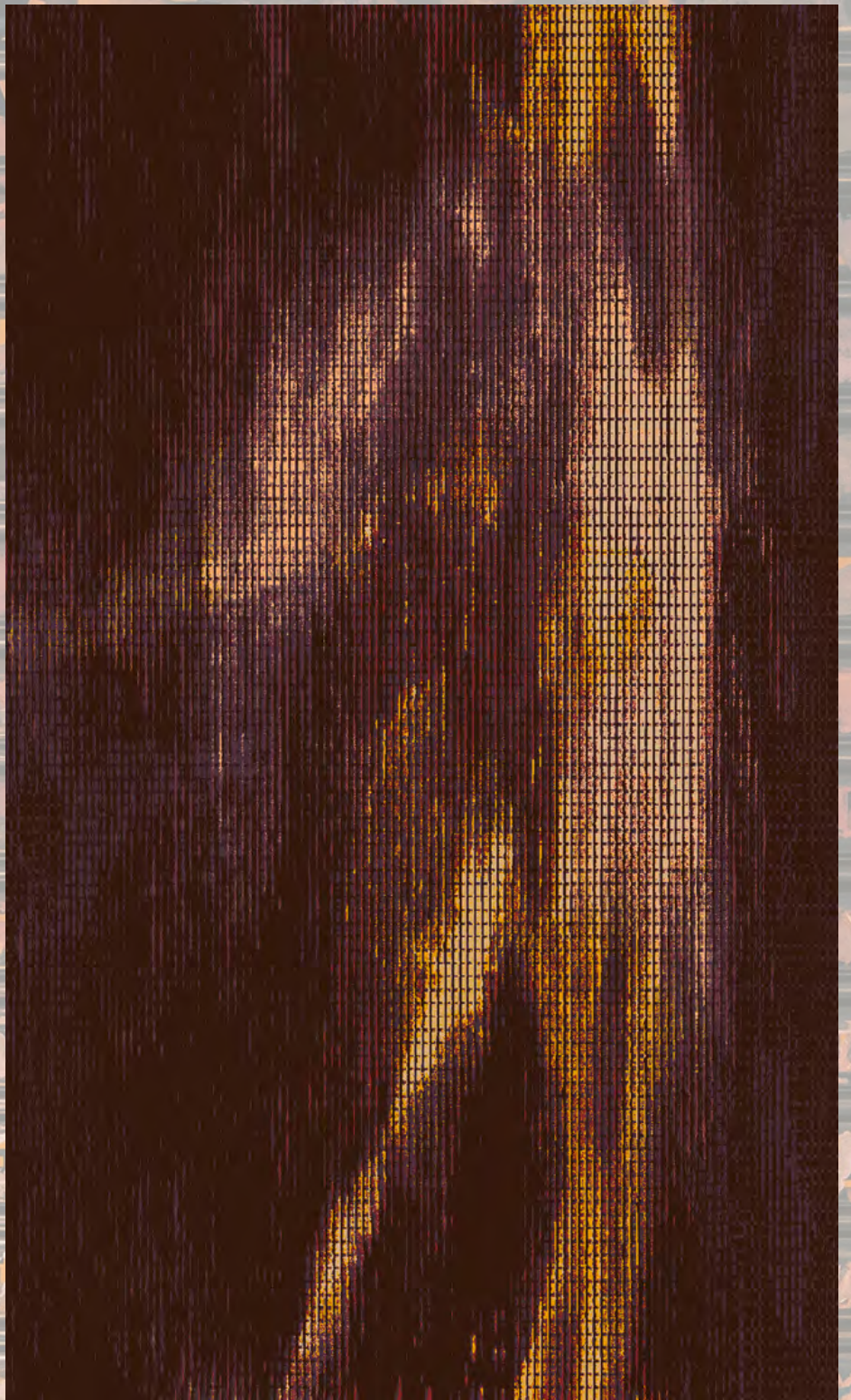


AX1835-10





V1620



AX1864-9



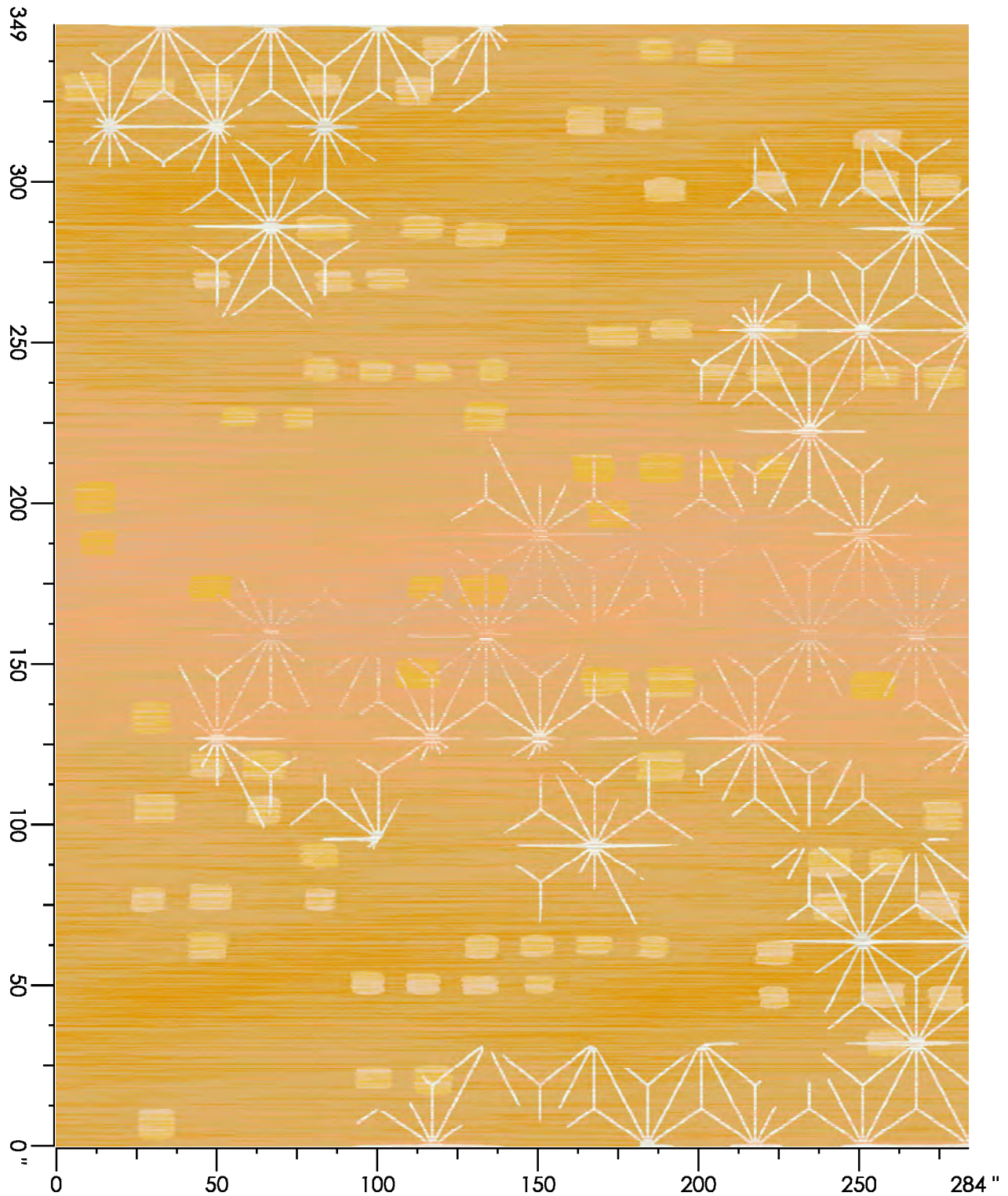
Design Number: AX1830-8 JB

Design Size: 284.00"W x 349.00"L

Repeat Type: RUG

1 repeat shown- not to scale

1	2	3	4	5	6	7	8
A556	H762	B552	K763	G762	K659	D660	D659
3.51%	3.19%	0.80%	20.20%	4.69%	3.17%	50.48%	13.96%



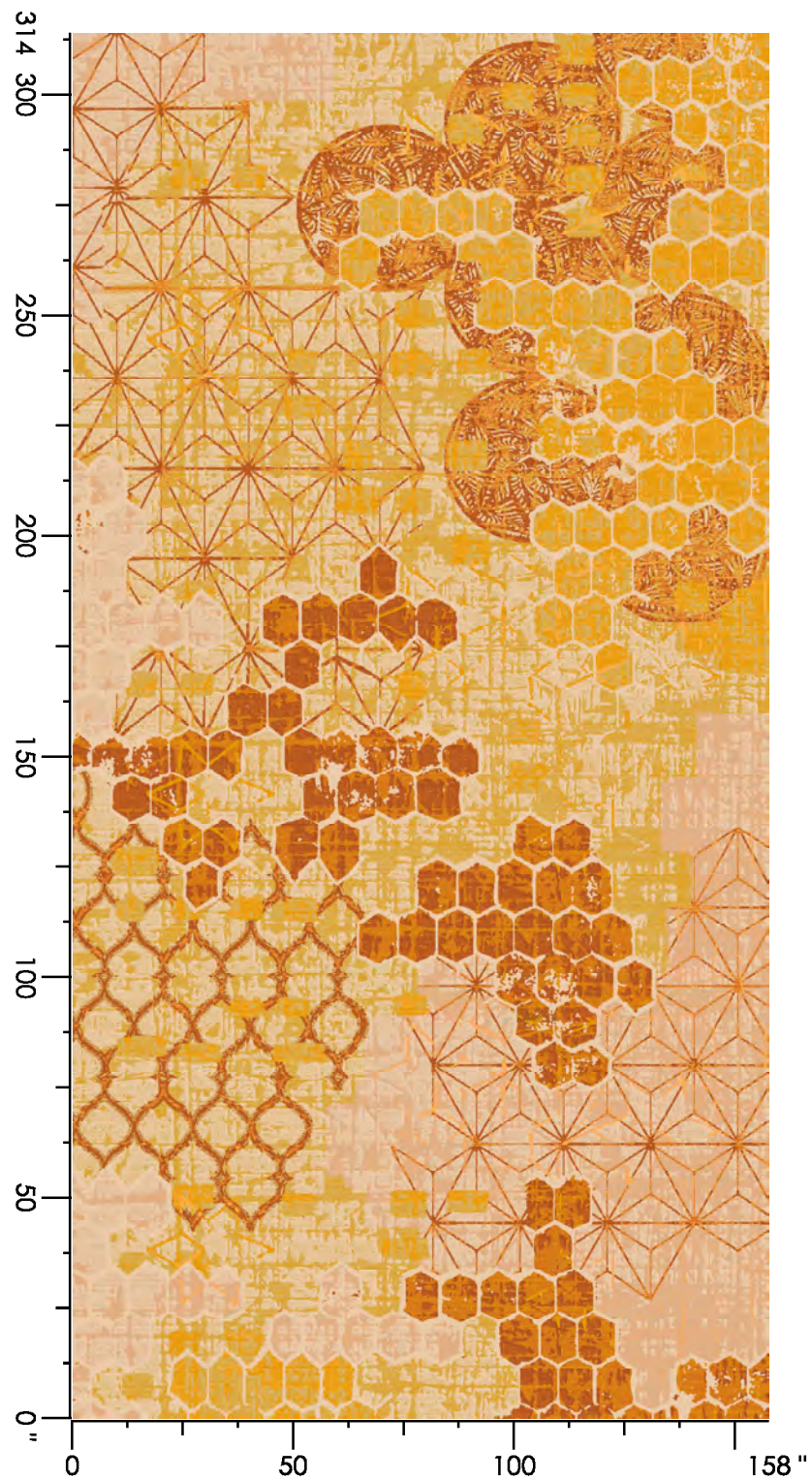
Design Number: AX1831-8 JB

Design Size: 157.71"W x 314.00"L

Repeat Type: END MATCH

1 repeat shown- not to scale

1	2	3	4	5	6	7	8
H762	F658	K763	G762	D660	D659	E658	D658
30.33%	5.15%	3.34%	8.52%	20.24%	13.30%	9.80%	9.32%



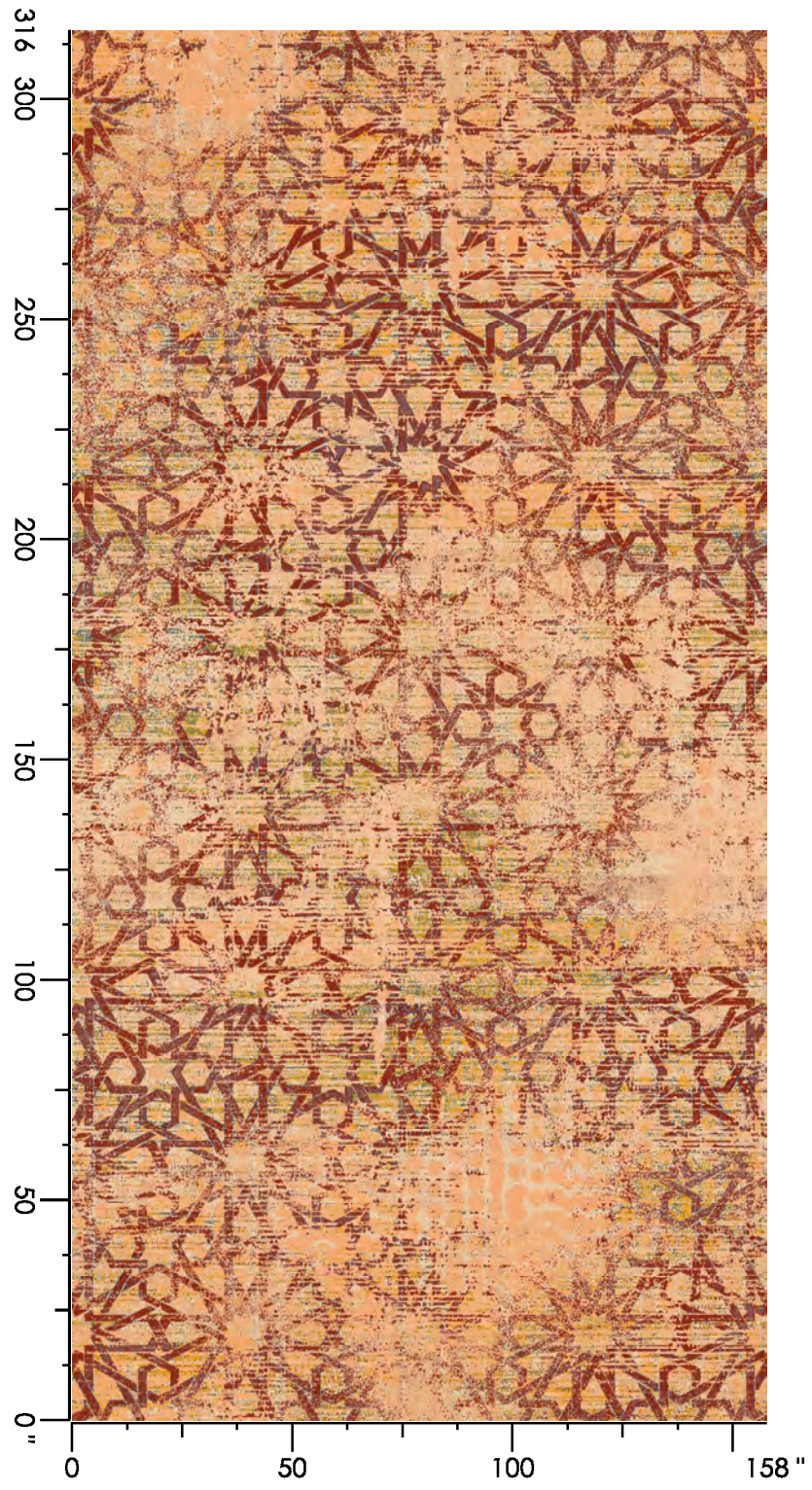
Design Number: AX1835-10 SG

Design Size: 157.71"W x 315.60"L

Repeat Type: SIDE MATCH

1 repeat shown- not to scale

1 A556 0.48%	2 H762 24.39%	3 K763 26.81%	4 G762 7.90%	5 B558 1.53%	6 D659 5.42%	7 B982 3.73%	8 L767 9.85%	9 C762 8.50%	10 C763 8.74%
11 B761 1.29%	12 N770 1.38%								



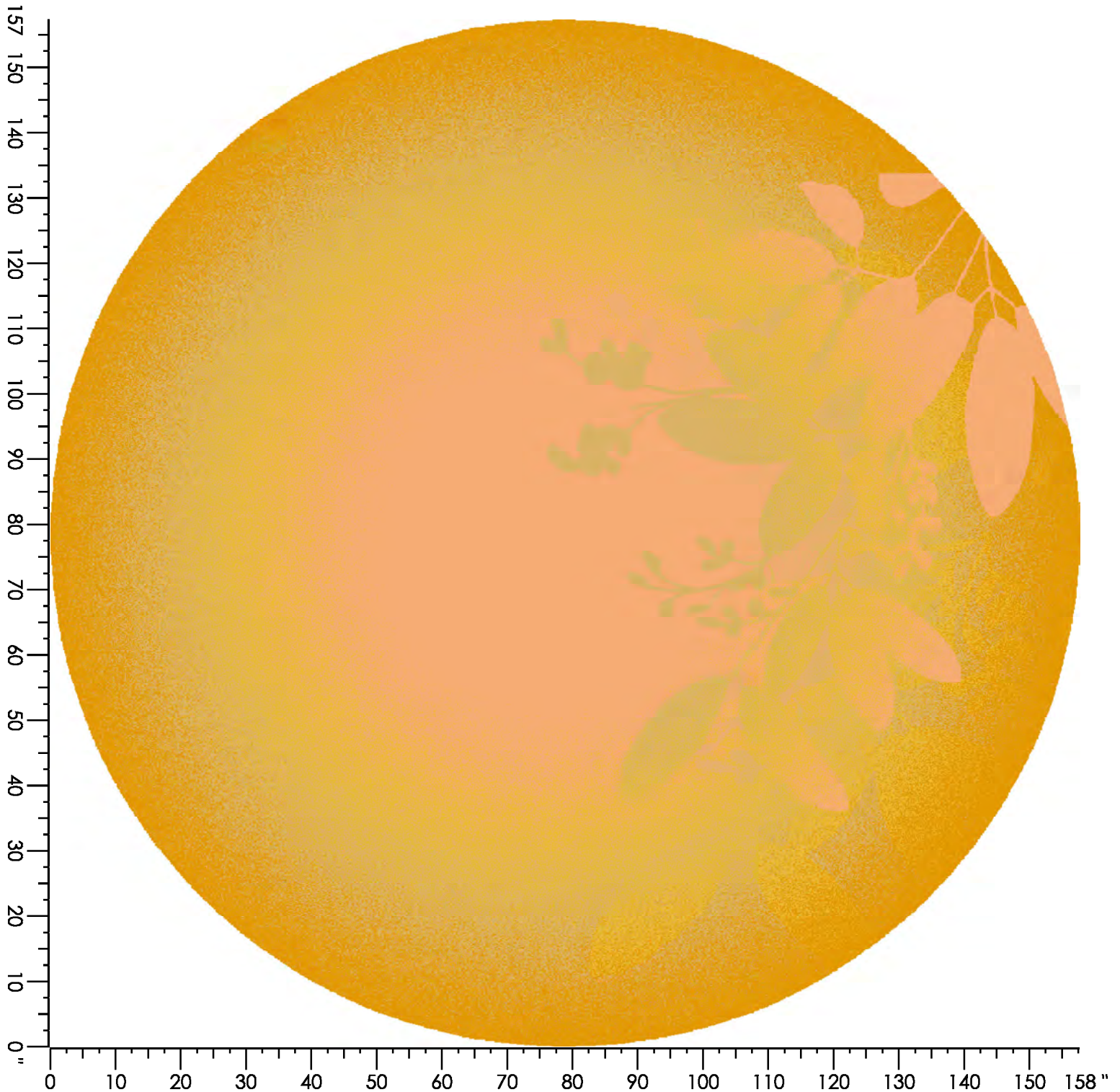
Design Number: AX1850-9KE

Design Size: 157.71"W x 157.33"L

Repeat Type: AREA RUG

1 repeat shown- not to scale

0	1	2	3	4
	D659	D660	K659	K763
21.54%	19.38%	19.98%	17.17%	21.93%



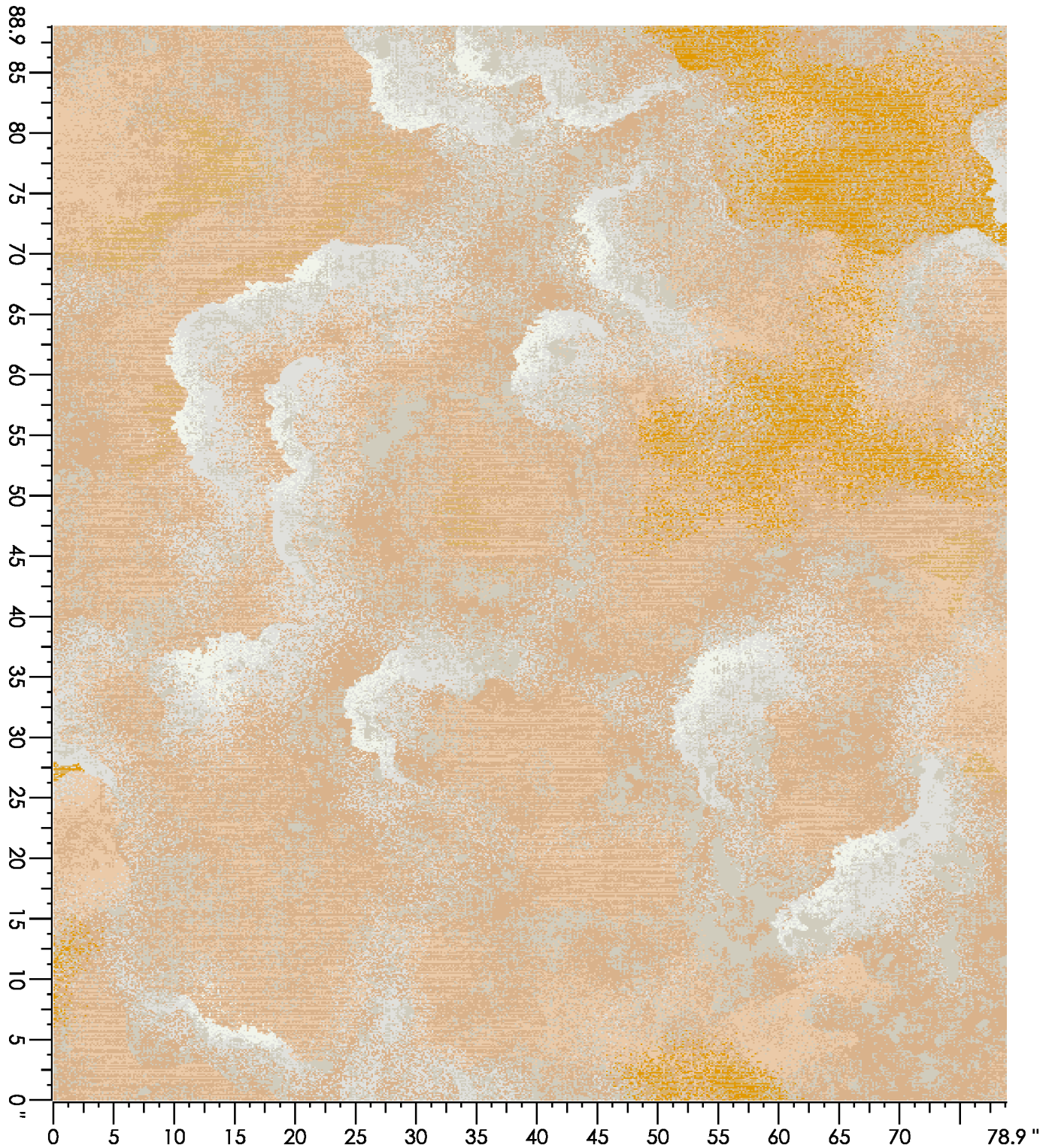
Design Number: AX1854-9

Design Size: 78.86"W x 88.89"L

Repeat Type:

1 repeat shown- not to scale

1	2	3	4	5	6	7
A556	A557	H762	B552	G762	D660	D659
1.95%	13.51%	18.80%	21.62%	37.77%	3.50%	2.85%



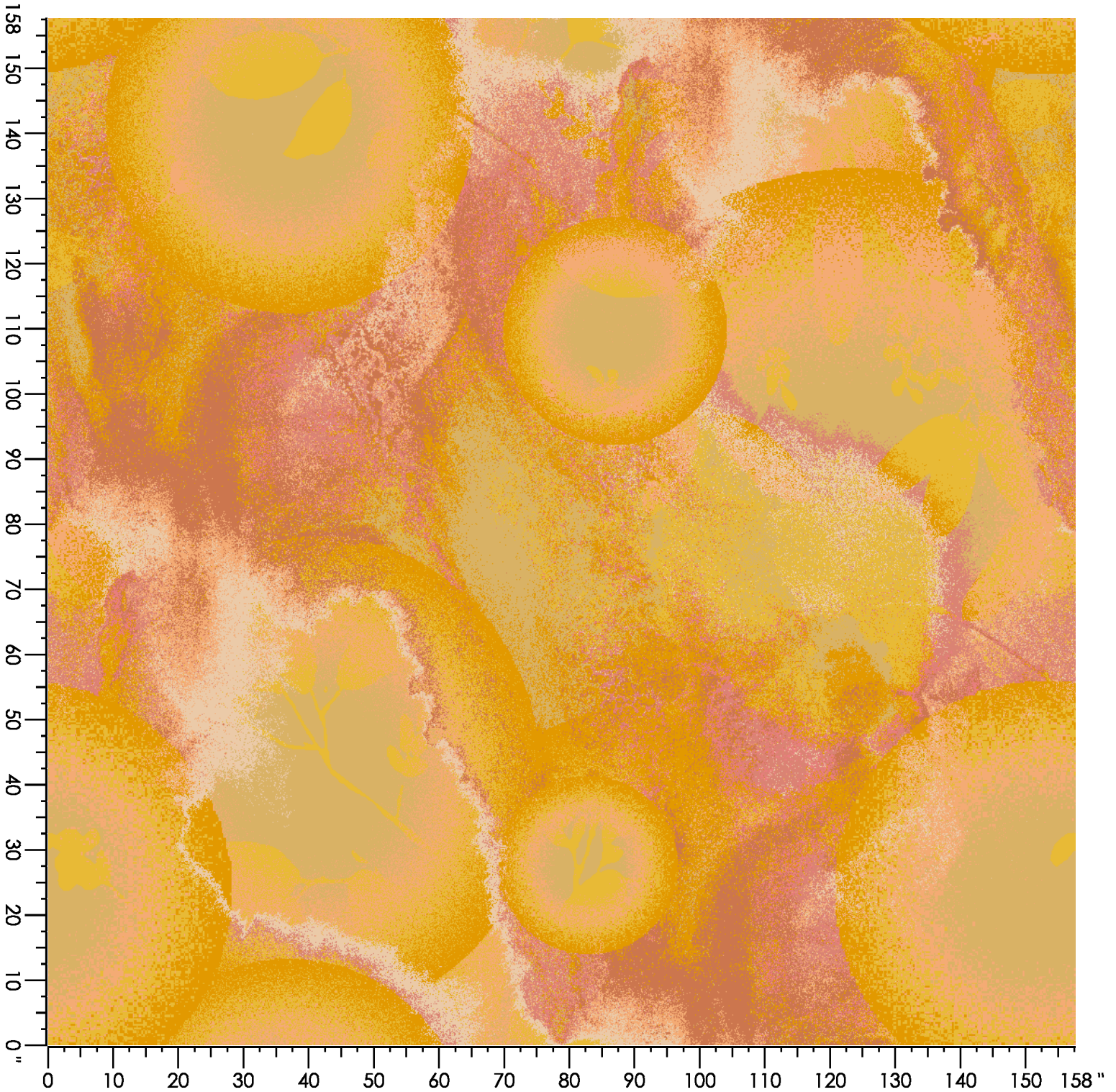
Design Number: AX1859-7 KE

Design Size: 157.71"W x 157.71"L

Repeat Type: SIDE MATCH

1 repeat shown- not to scale

1	2	3	4	5	6	7	8
M763	K766	D659	K768	D660	K659	K763	H762
9.90%	4.91%	20.40%	3.82%	16.23%	18.56%	18.97%	7.21%



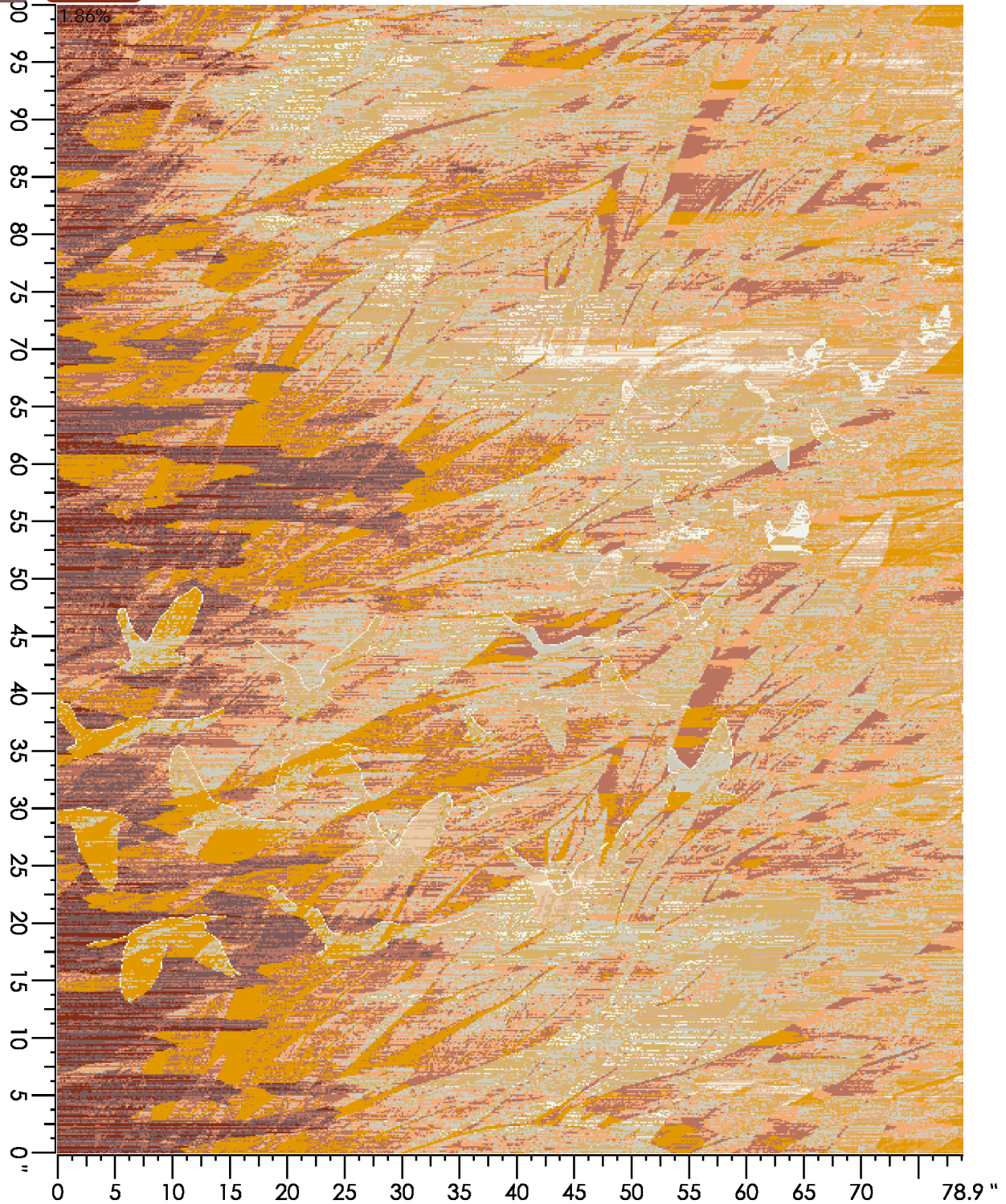
Design Number: AX1861-8 LD

Design Size: 78.86"W x 100.00"L

Repeat Type: END MATCH

1 repeat shown- not to scale

1 D659 11.25%	2 G763 15.29%	3 K763 17.80%	4 L763 2.05%	5 D657 5.11%	6 B552 18.75%	7 H762 2.51%	8 G762 7.46%	9 D660 10.16%	10 A556 2.55%
11 L767 5.22%	12 C763 1.86%								



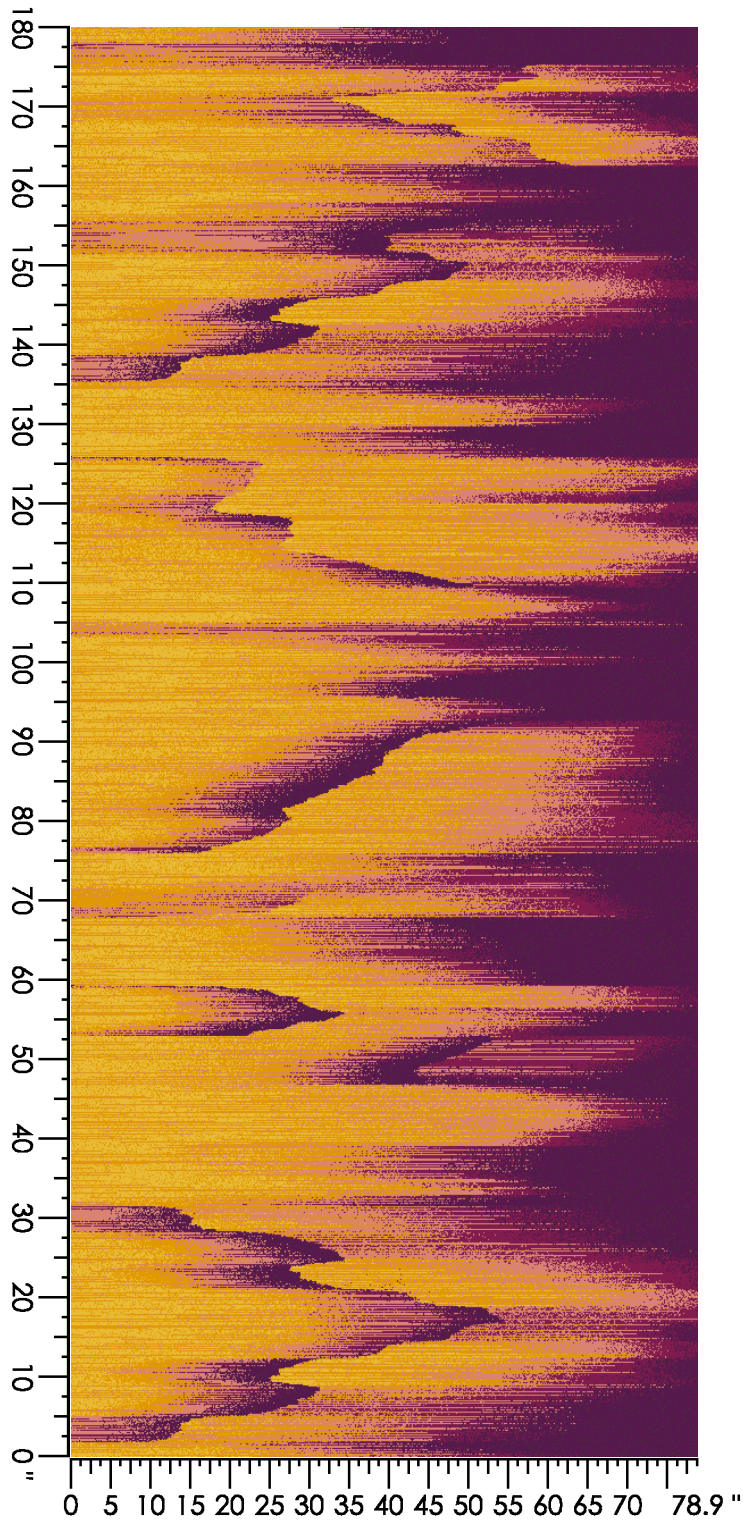
Design Number: AX1862-7

Design Size: 78.86"W x 180.00"L

Repeat Type: CORRIDOR

1 repeat shown- not to scale

1	2	3	4	5	6
B769	N770	L769	K766	D659	K659
19.98%	2.33%	13.77%	23.49%	24.96%	15.47%





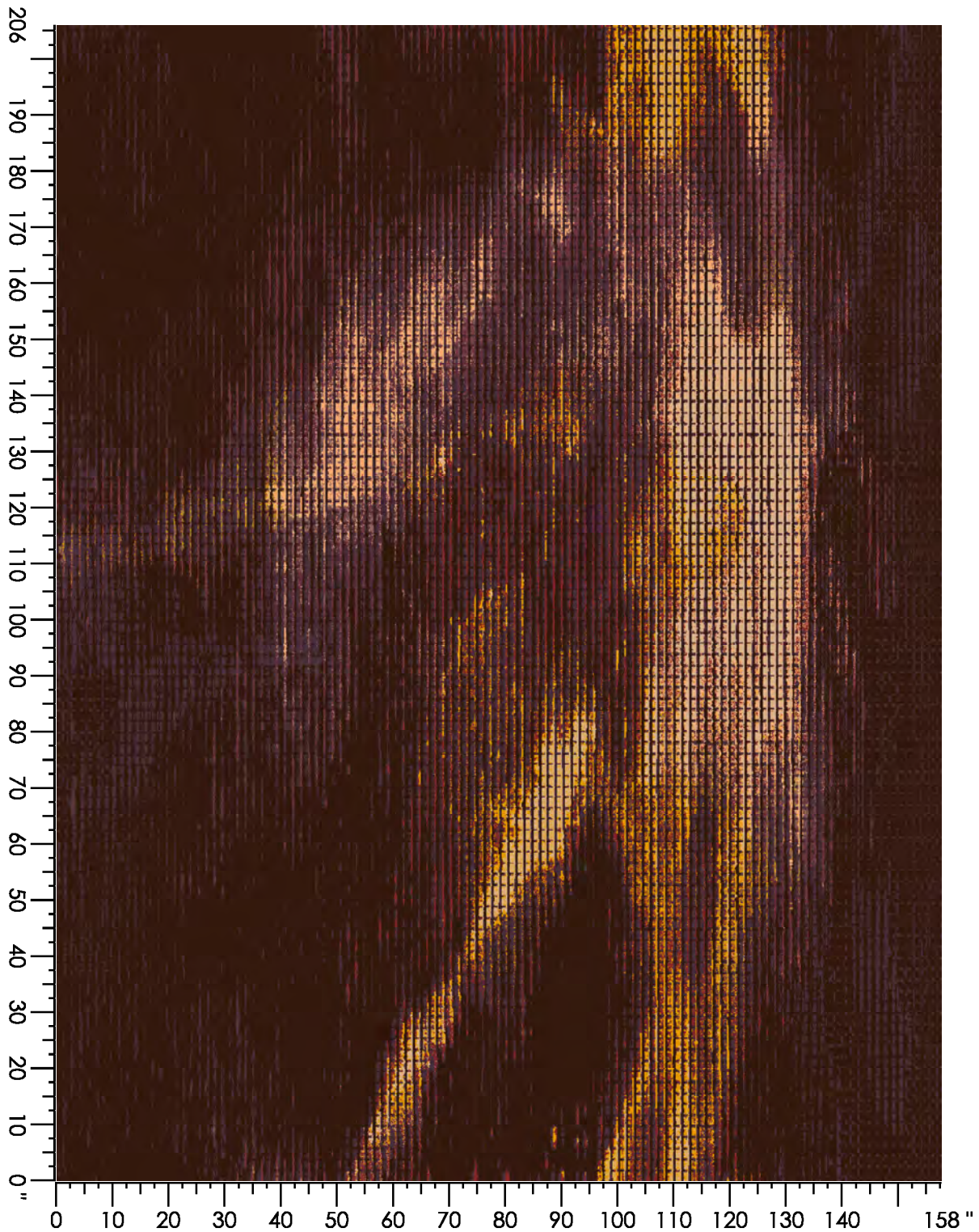
Design Number: AX1864-9 MK

Design Size: 157.71"W x 206.00"L

Repeat Type: NONE - RUG

1 repeat shown- not to scale

1	2	3	4	5	6	7	8
A658	N770	B761	N767	L767	D659	G762	K763
61.47%	21.50%	3.68%	3.76%	1.27%	2.91%	3.09%	2.32%

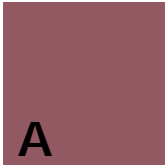


Style: d5150 jb  
Color: Colorway 1  
Repeat Type:

---

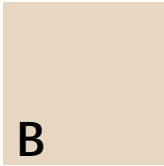
Product Type: Dynamics

---



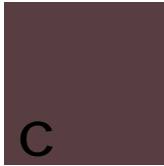
**A**

lx hosp yrns  
2517



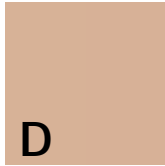
**B**

lx hosp yrns  
3543



**C**

lx hosp yrns  
2508



**D**

lx hosp yrns  
3537



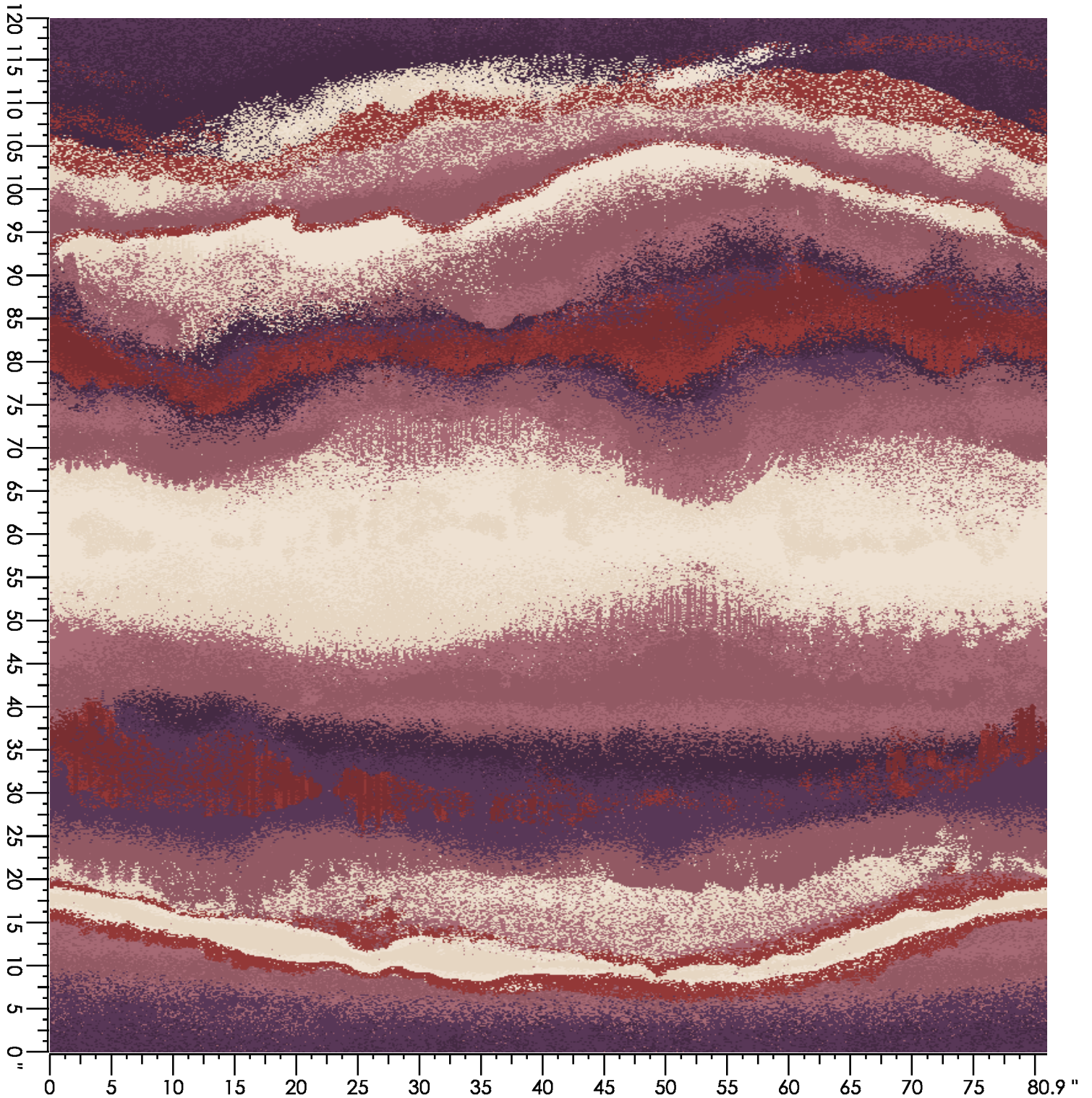
Design Number: IN3129

Design Size: 3.19"W x 4.72"L

Repeat Type: RUG

1 repeat shown- not to scale

1	2	3	4	21	22	23	24
3543C	2517C	2041C	6002C	3543L	2517L	2041L	6002L
16.47%	20.44%	4.70%	10.65%	11.50%	15.82%	7.02%	13.40%



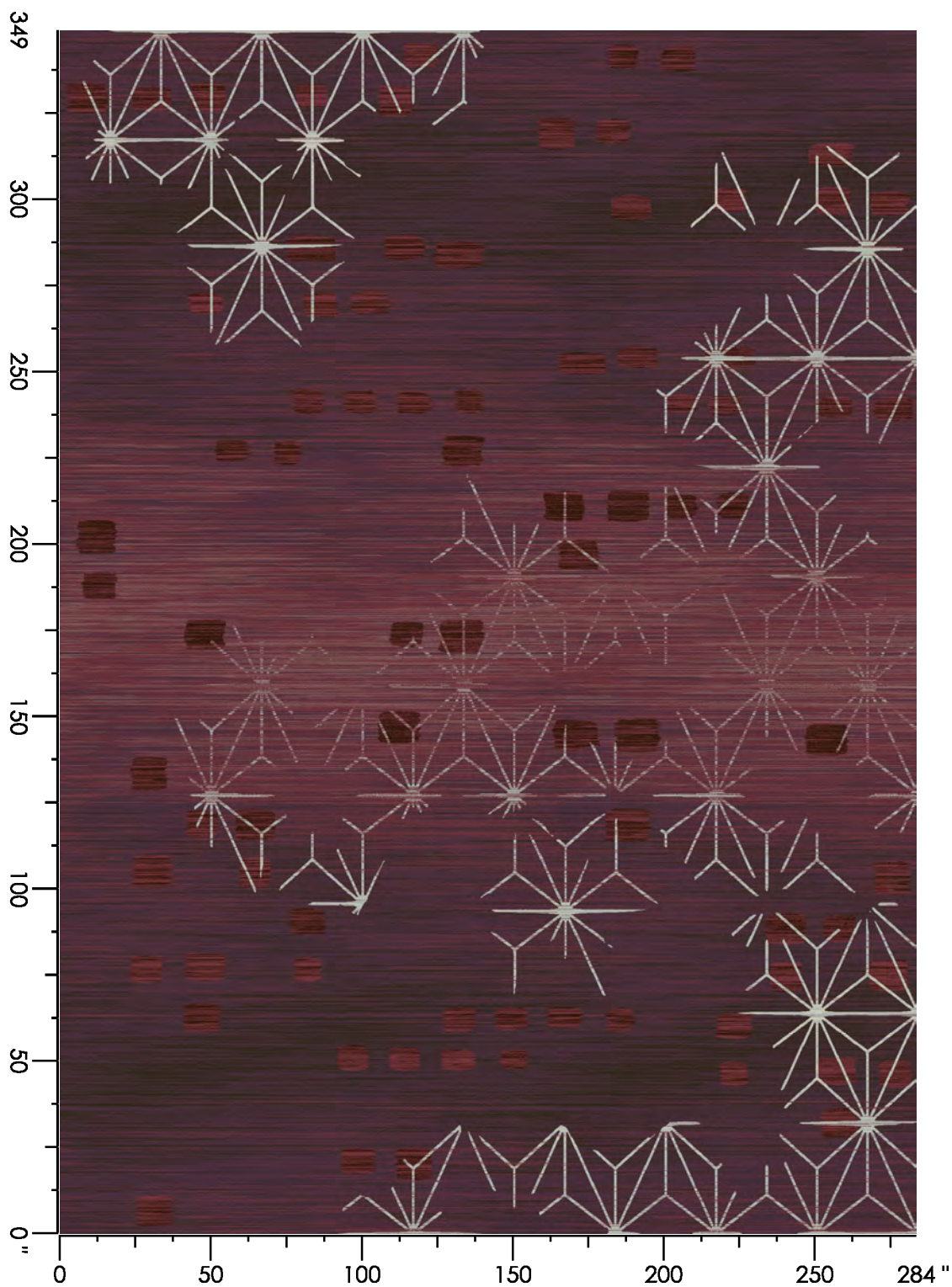
Design Number: AX1856-9 jb

Design Size: 284.00"W x 349.00"L

Repeat Type: RUG

1 repeat shown- not to scale

1	2	3	4	5	6	7
B552	B558	L767	N767	N770	A651	A658
0.80%	3.51%	4.69%	23.39%	50.48%	13.96%	3.17%



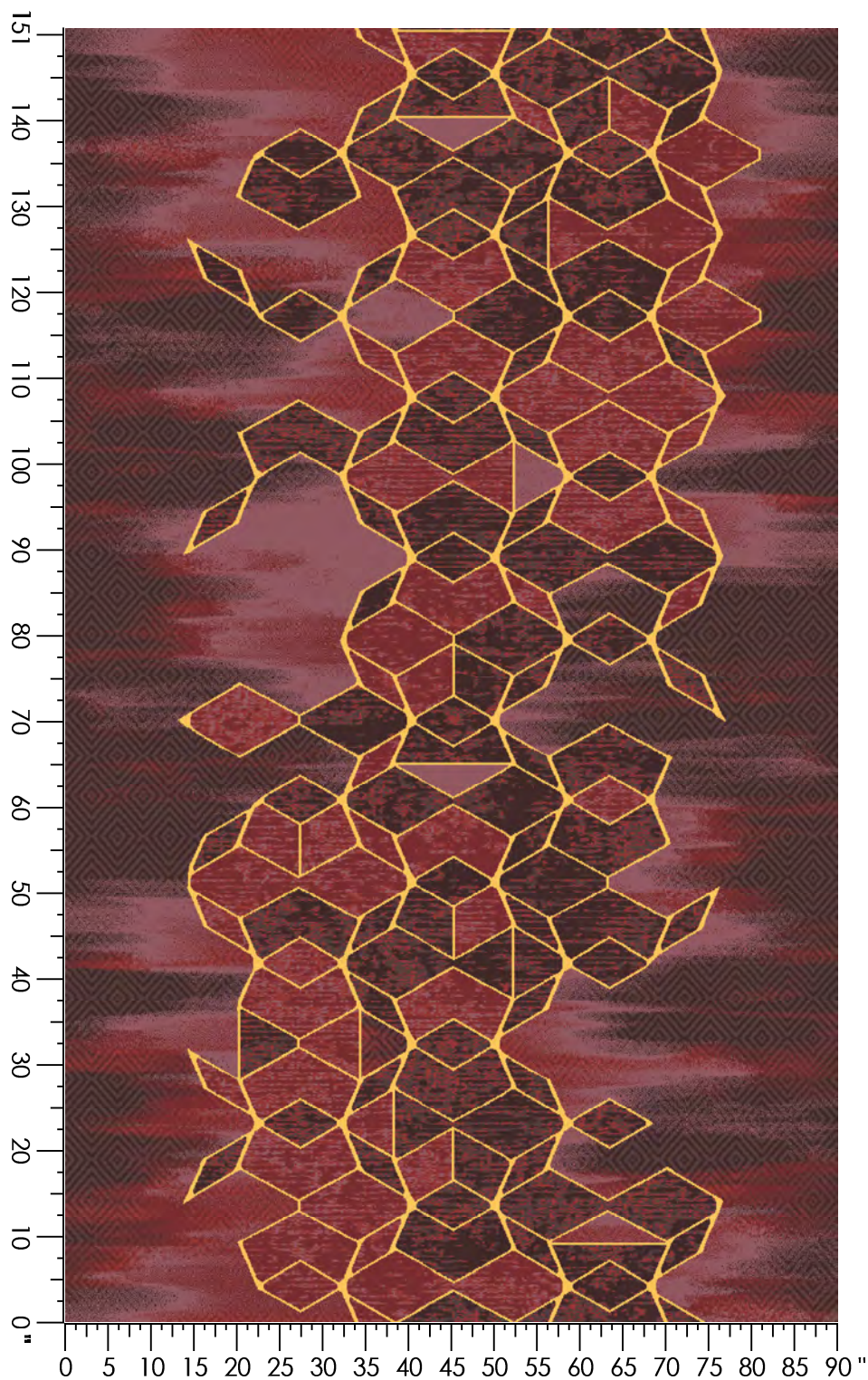
Design Number: IN3132 MG

Design Size: 90.00"W x 150.86"L

Repeat Type: No Side Match

1 repeat shown- not to scale

1	2	3	21	22	23	24
2517C	2041C	7510C	2517C	2041L	7510L	3506L
6.92%	17.54%	23.92%	10.83%	12.98%	21.89%	5.92%



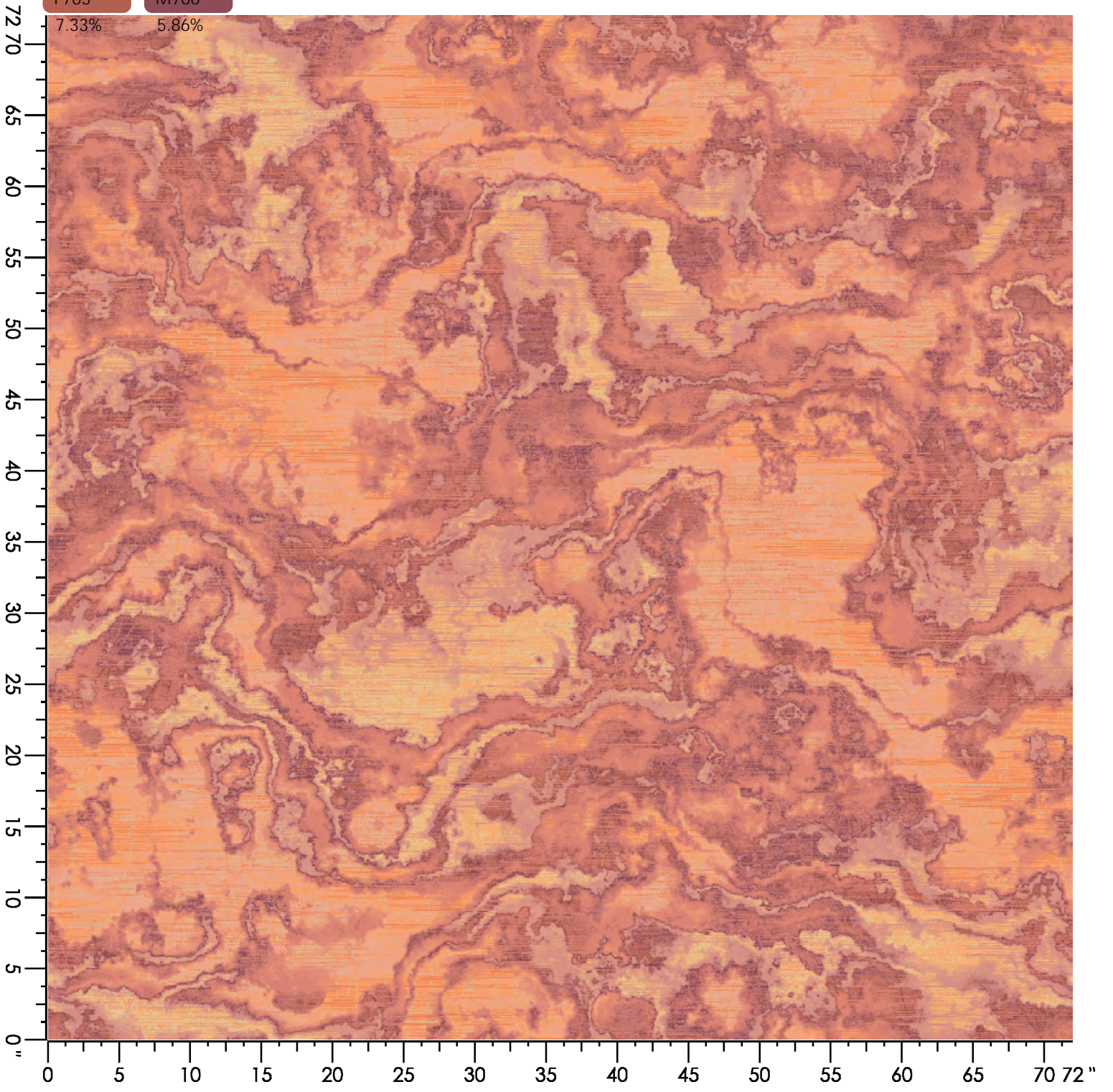
Design Number: INJ1090

Design Size: 72.00"W x 72.00"L

Repeat Type:

1 repeat shown- not to scale

1 G657 2.74%	2 H763 6.14%	3 K763 2.99%	4 K763 2.31%	5 F766 7.38%	6 H764 6.78%	7 G766 15.47%	8 H765 3.28%	9 K766 28.16%	10 E766 11.56%
11 F763 7.33%	12 M766 5.86%								



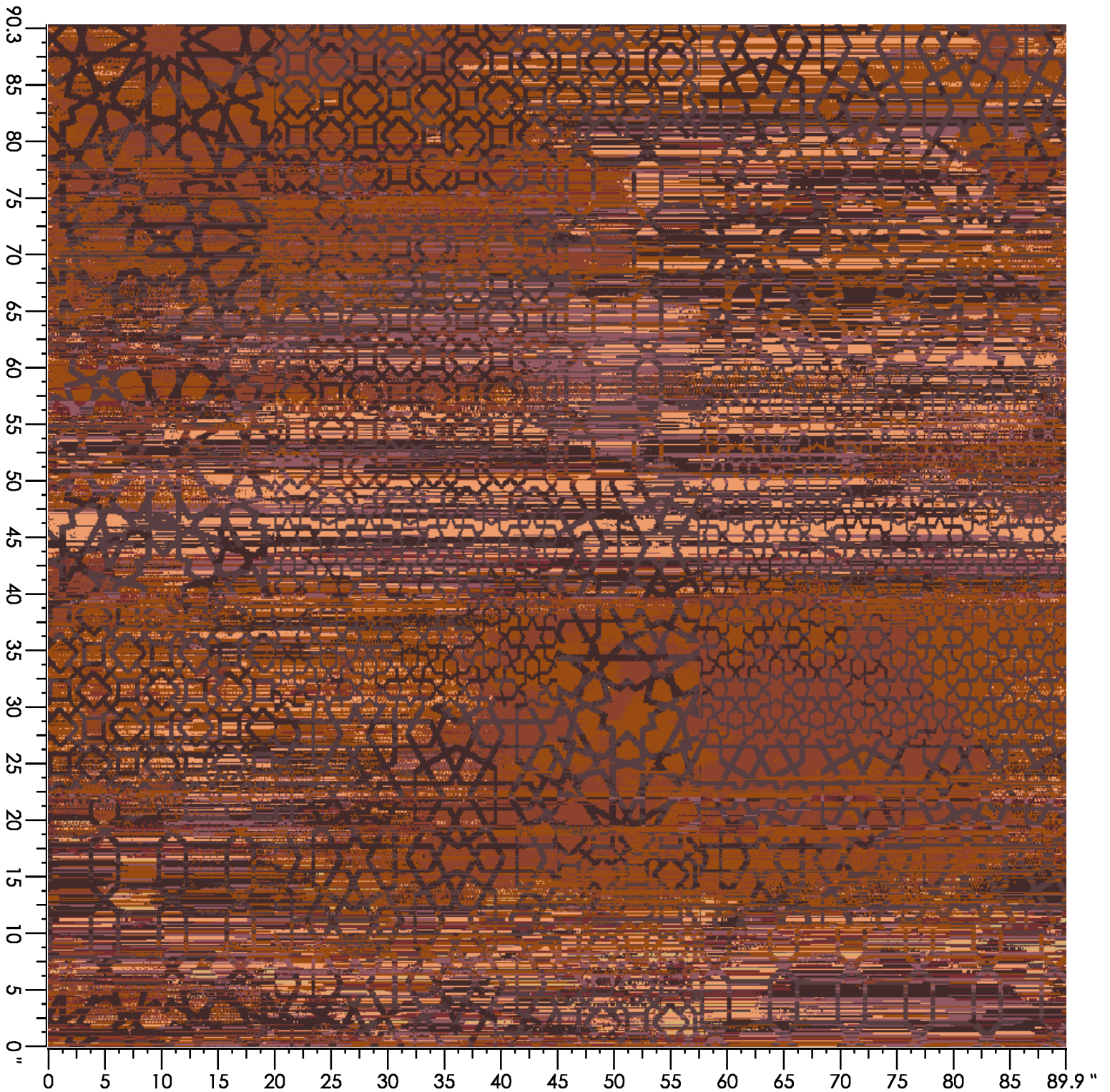
Design Number: LP2017 JB

Design Size: 90.00"W x 90.40"L

Repeat Type: SIDEMATCH

1 repeat shown- not to scale

27	29	31	33	35	41	43	49
2514C	2048C	3513C	2041C	2517C	2508C	7510C	3503L
8.93%	12.43%	21.27%	3.36%	8.61%	22.92%	22.02%	0.45%



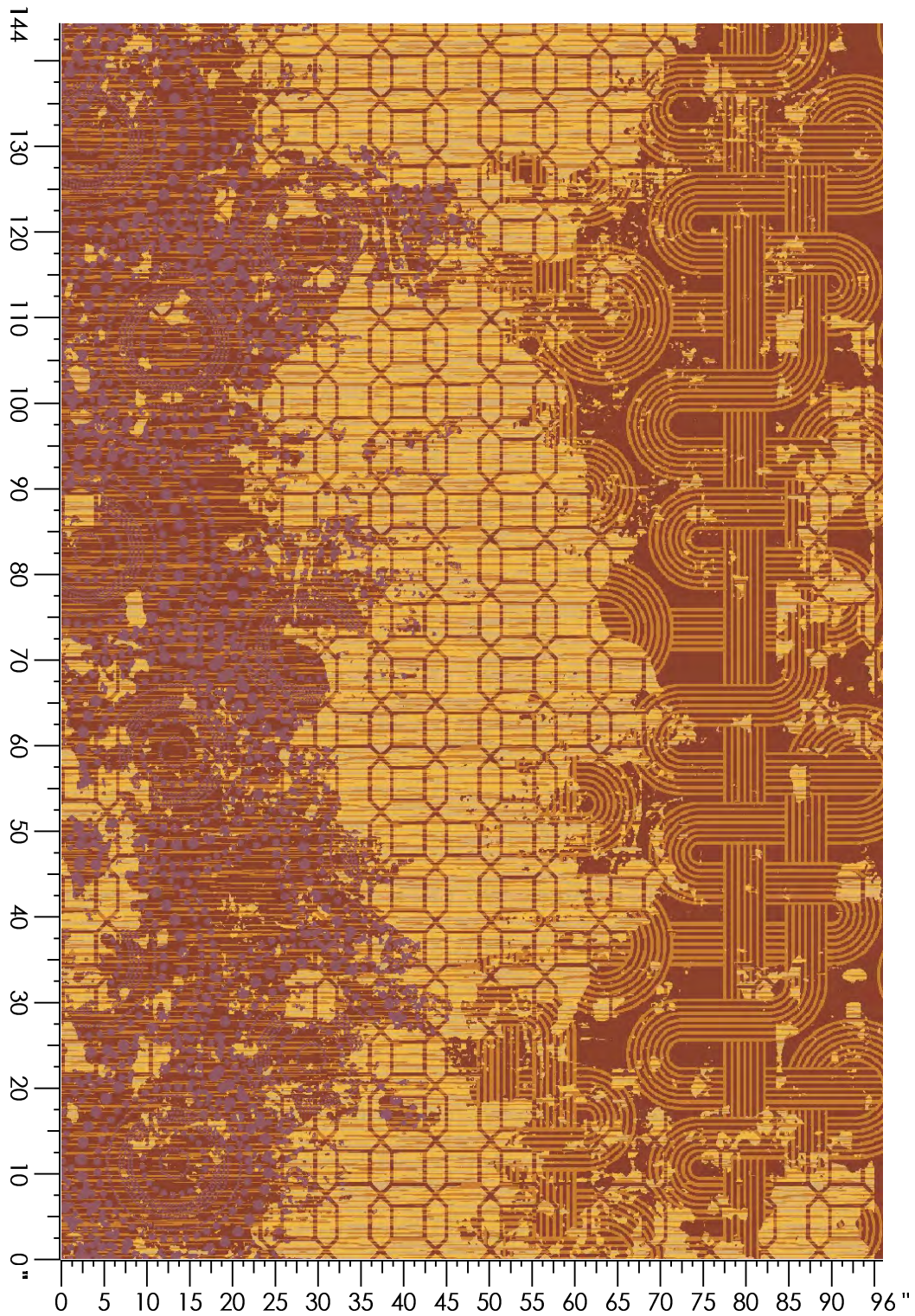
Design Number: LP3084

Design Size: 96.00"W x 144.40"L

Repeat Type: NO SIDEMATCH

1 repeat shown- not to scale

1	2	3	4	5
3506C	3503C	3546C	2517C	2048C
13.35%	11.19%	28.46%	9.12%	37.88%





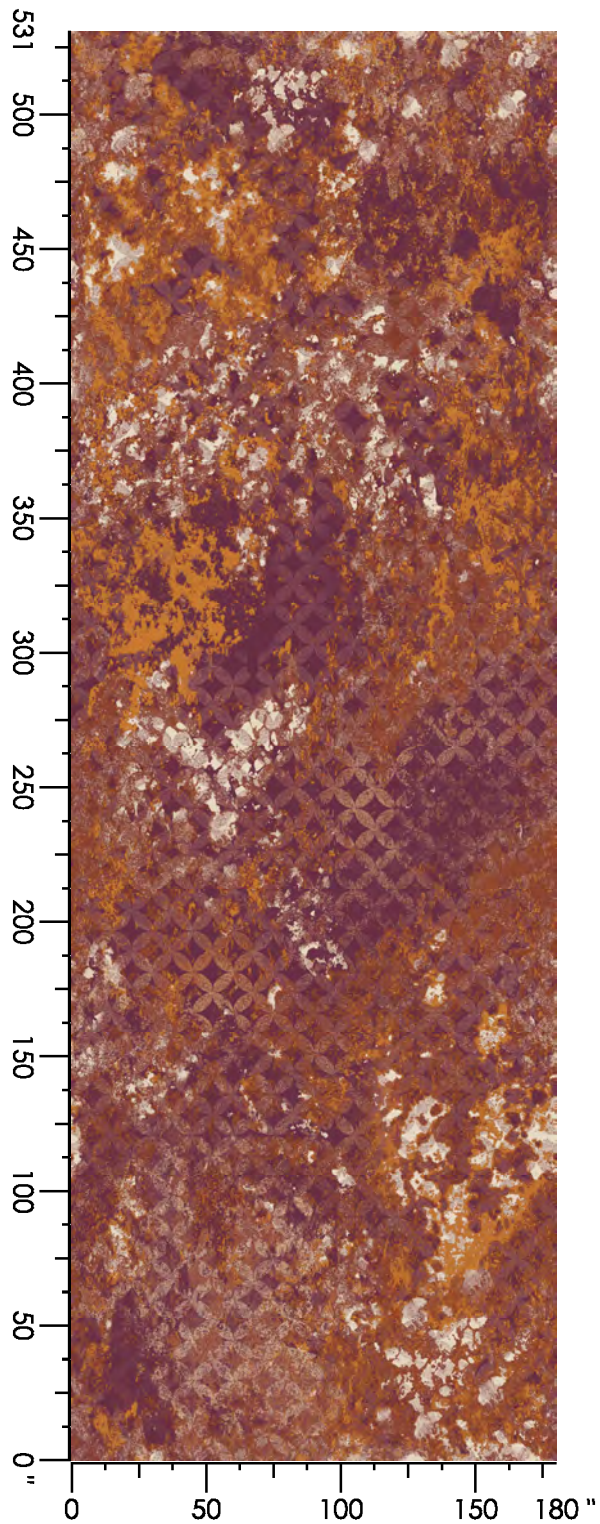
Design Number: LP3086

Design Size: 180.00"W x 531.00"L

Repeat Type: SIDE MATCH

1 repeat shown- not to scale

1	2	3	4	5	6	7
2006C	2048C	3513C	2517C	3546C	3537C	3543C
36.16%	19.96%	6.15%	10.64%	13.65%	8.03%	5.42%



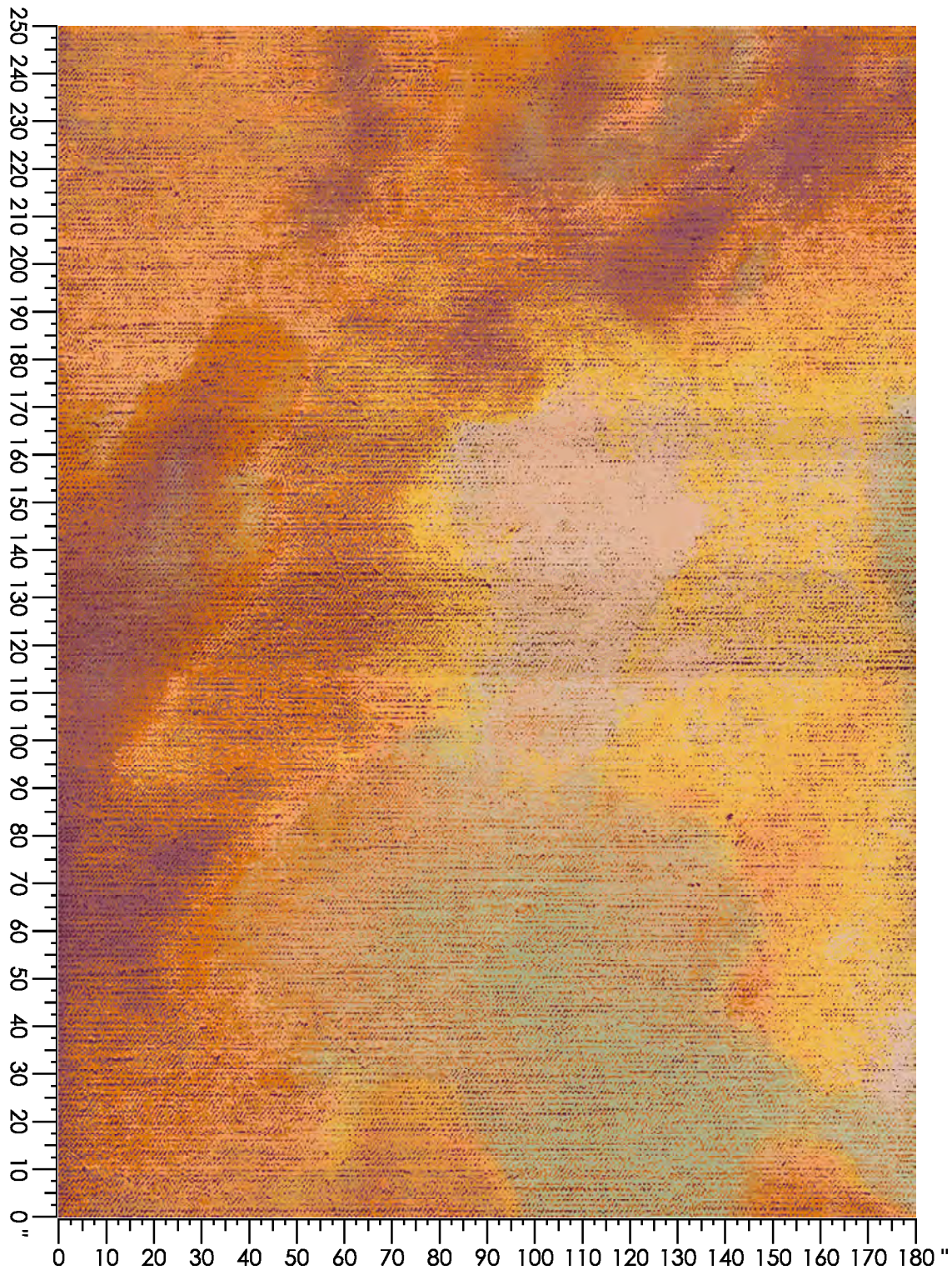
Design Number: LP3091 MK

Design Size: 180.00"W x 250.00"L

Repeat Type: NONE - RUG

1 repeat shown- not to scale

1	2	3	4	5	6	7	8
2006C	2517C	3541C	3546C	4529C	2514C	3506C	3537C
5.32%	19.03%	17.25%	9.00%	11.27%	15.11%	14.70%	8.32%



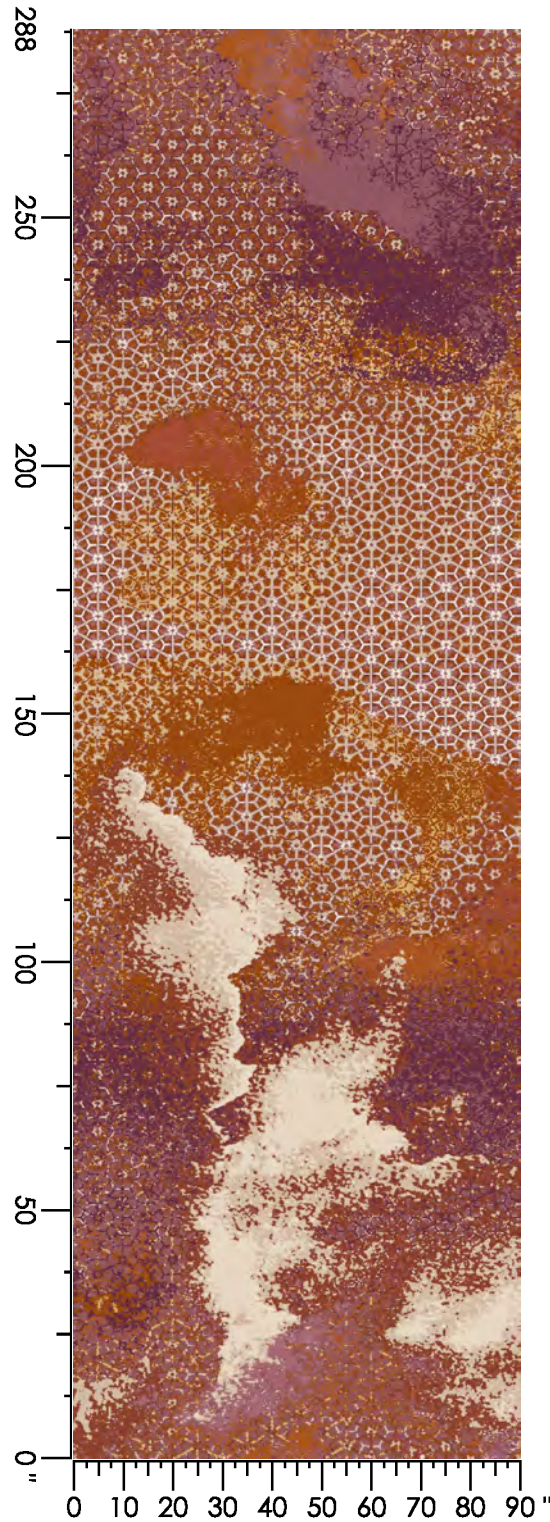
Design Number: V1603-JB

Design Size: 90.00"W x 288.00"L

Repeat Type: END MATCH

1 repeat shown- not to scale

1 3543C 4.52%	2 3537C 17.68%	3 3503L 4.31%	4 2048C 16.01%	5 3513C 17.78%	6 2517C 16.18%	7 2006C 13.79%	21 3543L 1.64%	22 3537L 0.44%	23 3503L 0.54%
24 2048L 1.60%	25 3513L 2.65%	26 2517L 2.86%							



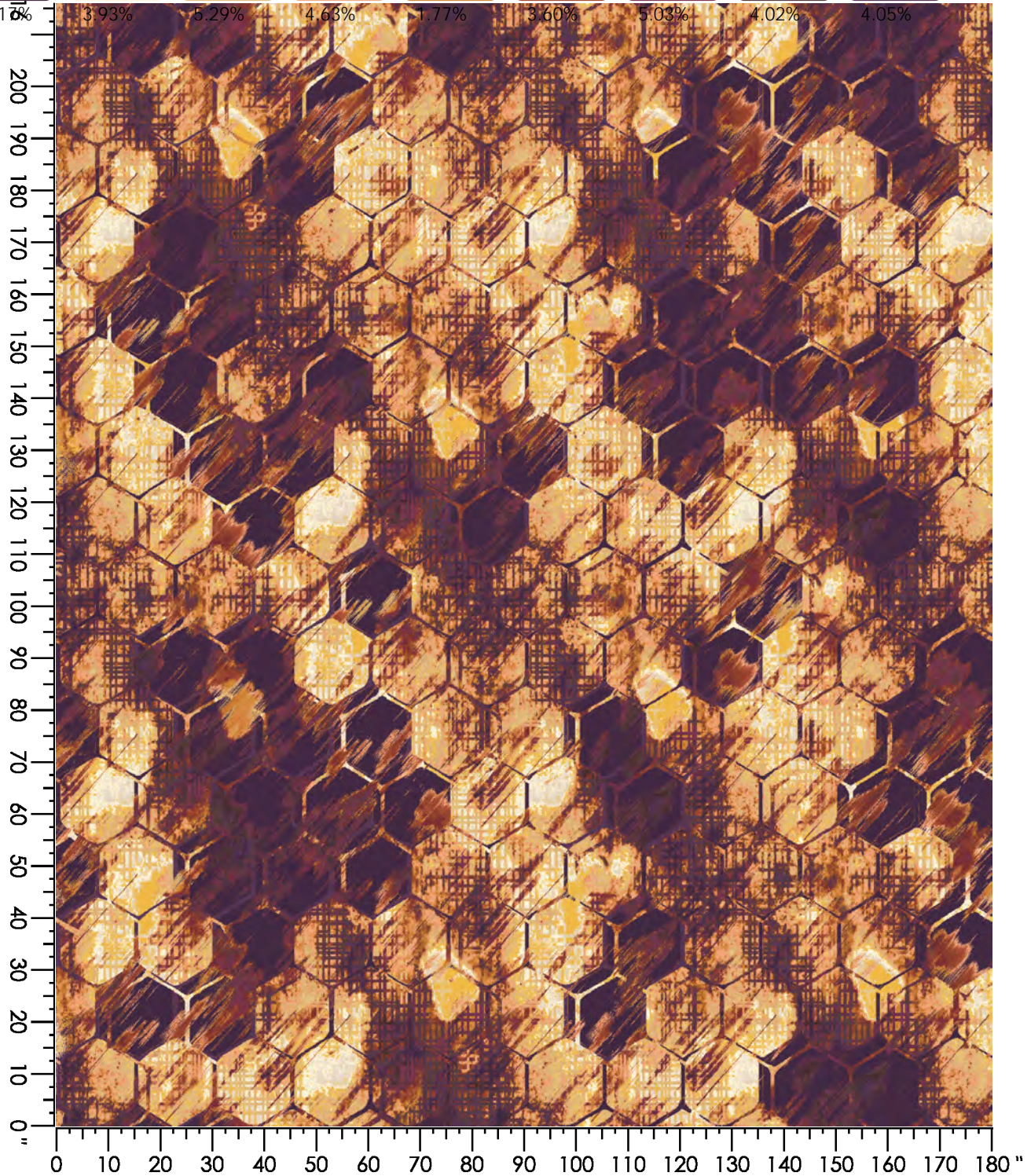
Design Number: V1609 JB

Design Size: 180.00"W x 216.00"L

Repeat Type: SIDEMATCH

1 repeat shown- not to scale

1 3543C 2.78%	2 3506C 6.03%	3 3503L 5.52%	4 2514C 6.08%	5 3546C 6.74%	6 2048C 6.45%	7 2508C 5.50%	8 2041C 3.81%	9 2006C 4.03%	10 7510C 1.56%
11 6002C 19.18%	21 1502L 3.93%	23 3503L 5.29%	24 2514L 4.68%	25 3546L 1.77%	26 2048L 3.60%	29 2006L 5.03%	30 7510L 4.02%	31 6002L 4.05%	



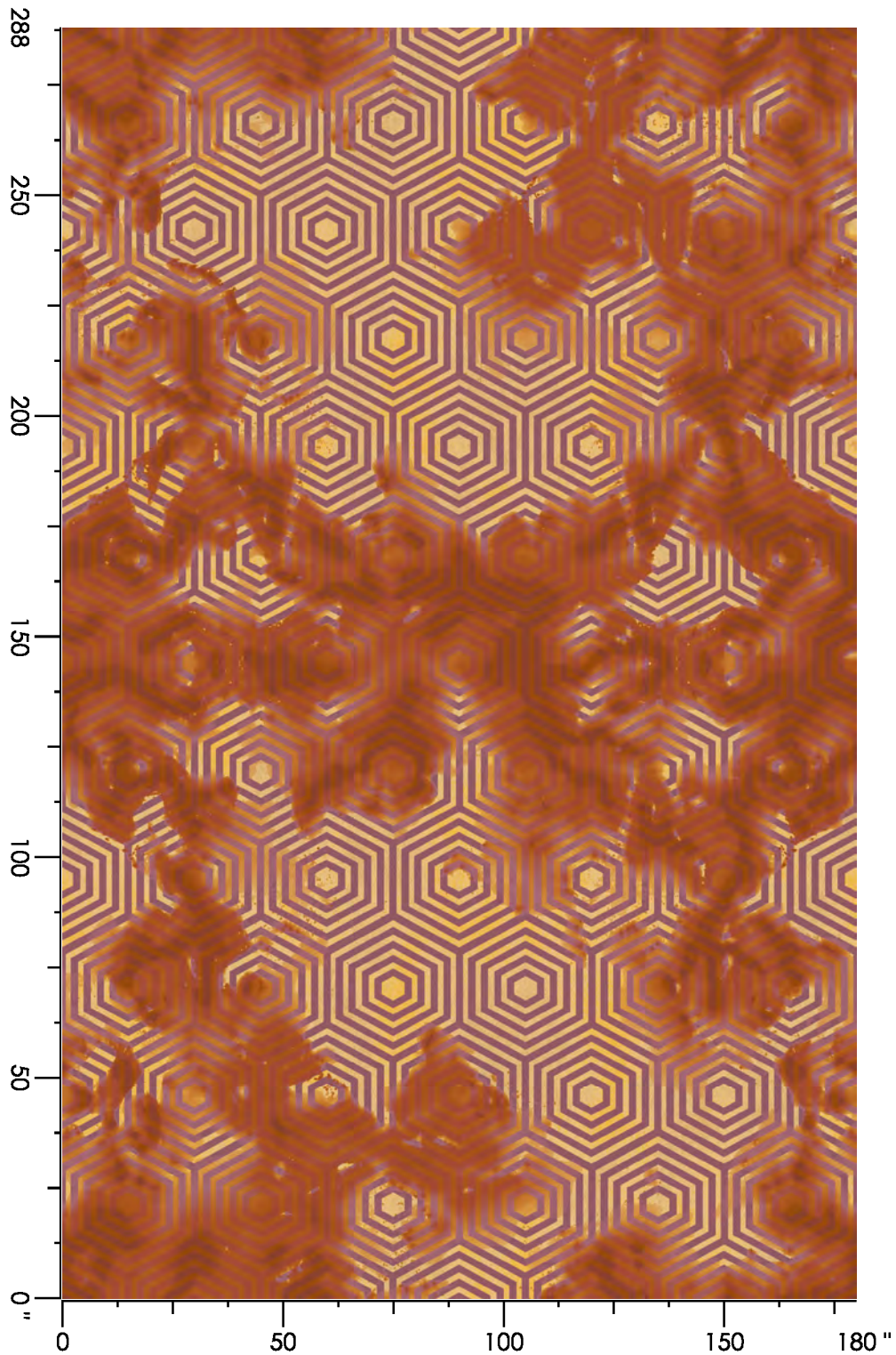
Design Number: V1610JB

Design Size: 180.00"W x 288.00"L

Repeat Type: SIDEMATCH

1 repeat shown- not to scale

1	2	3	4	5	6	21	22	23	26
2517C	2048C	3513C	3546C	3506C	3503L	2517L	2048L	3513L	3503L
19.26%	7.35%	5.99%	9.03%	3.85%	2.94%	11.16%	17.32%	14.22%	8.88%



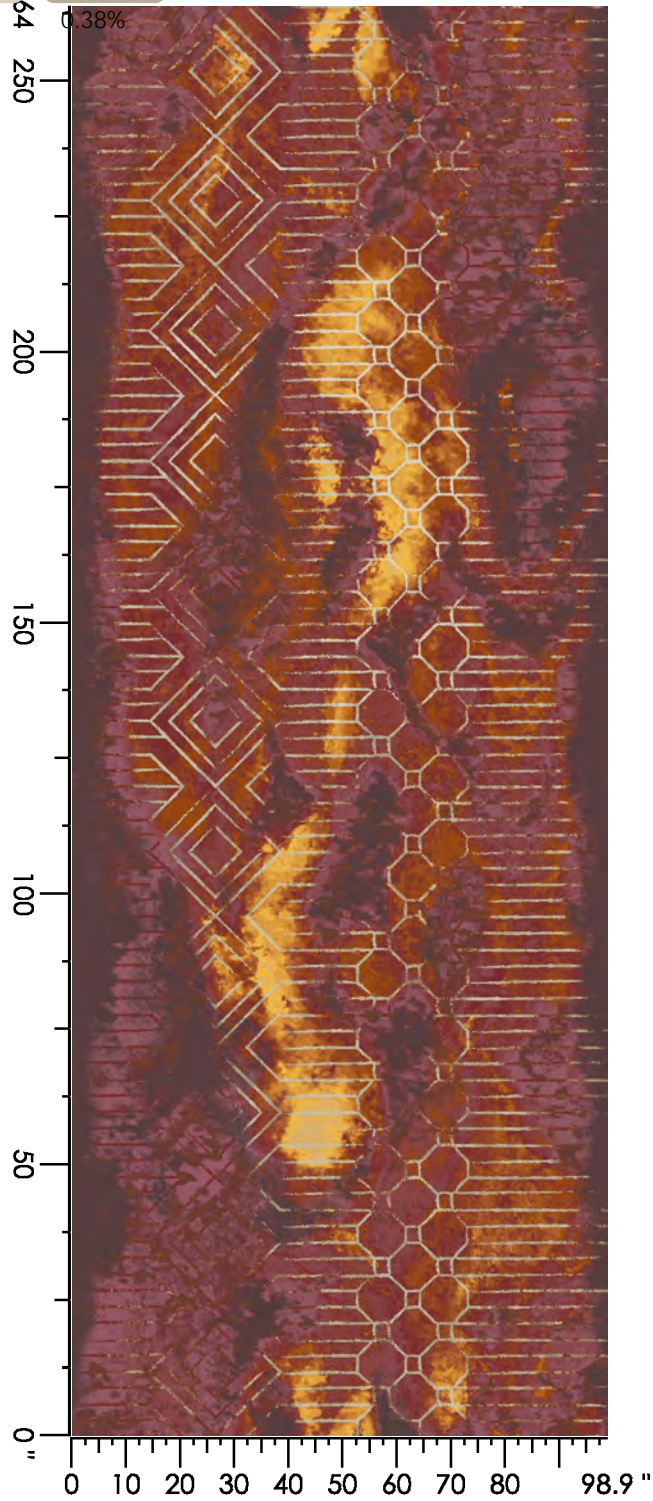
Design Number: V1615 JB

Design Size: 99.00"W x 264.00"L

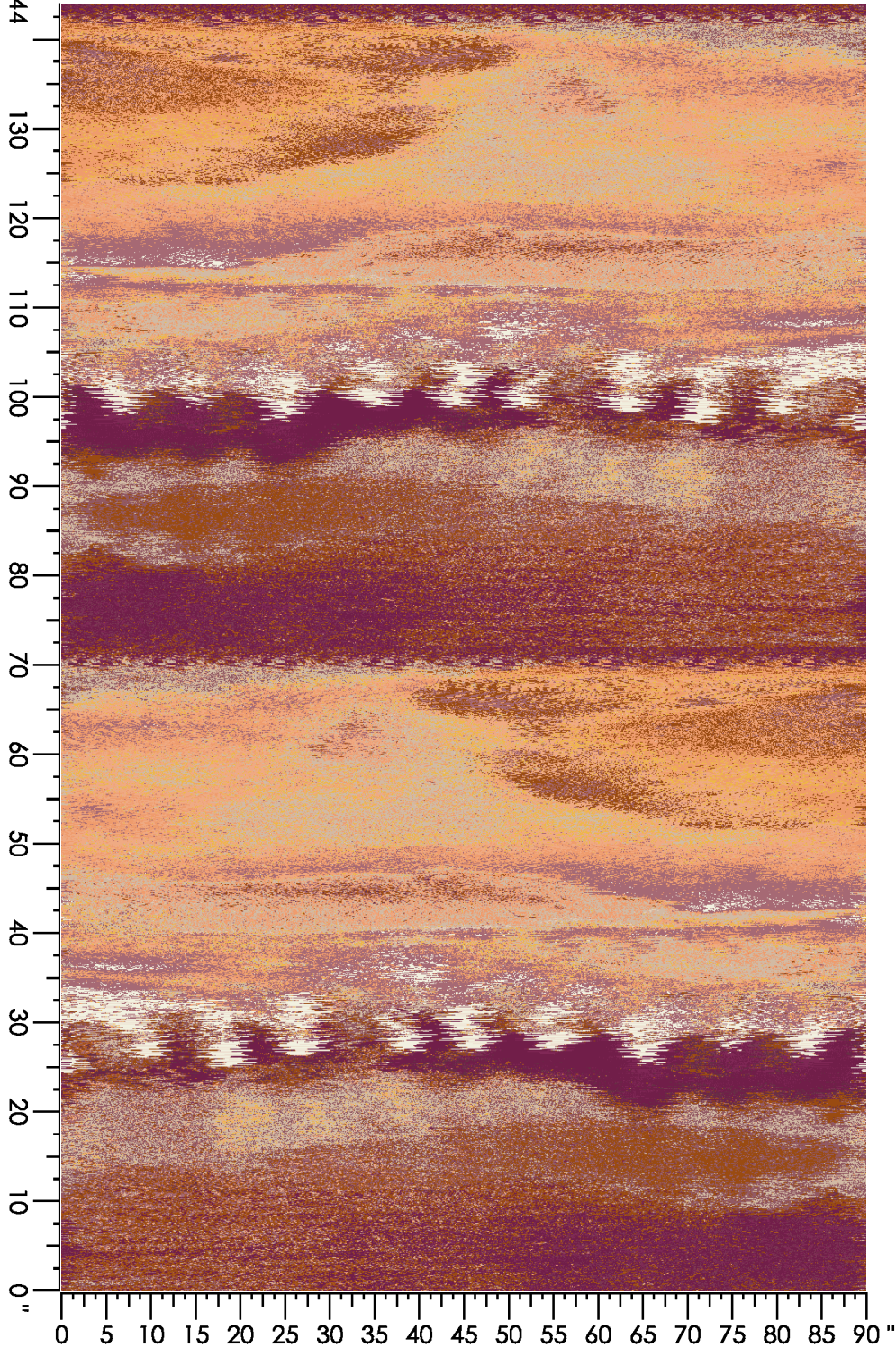
Repeat Type: END MATCH

1 repeat shown- not to scale

1 1502C 3.45%	2 3526C 2.28%	3 2048C 10.09%	4 3513C 10.92%	5 2041C 22.73%	6 2508C 24.79%	7 2517C 17.15%	8 3546C 4.07%	9 3506C 1.93%	10 3503L 0.40%
21 1502L 0.56%	22 3526L 0.34%	41 1502LL 0.90%	42 3526LL 0.38%						



1 2512C 9.35%	2 2006C 1.58%	3 3513C 11.40%	4 2517C 7.36%	5 2514C 12.36%	6 3506C 5.47%	7 3537C 14.07%	21 2512L 1.77%	22 2006L 2.55%	23 3513L 3.23%
24 2517L 13.77%	25 2514L 13.59%	27 3537L 0.42%	28 3543L 0.36%	30 M1509L 2.75%					



Design Number: V1620 MK

Design Size: 180.00"W x 120.00"L

Repeat Type: SIDE MATCH

1 repeat shown- not to scale

1 2006C 7.20%	2 2041C 9.57%	3 2048C 10.73%	5 2517C 13.55%	6 3546C 10.59%	7 2514C 5.95%	21 2006L 9.15%	22 2041L 11.51%	24 3513L 8.32%	25 2517L 7.21%
26 3546L 4.47%	28 3537L 1.76%								

