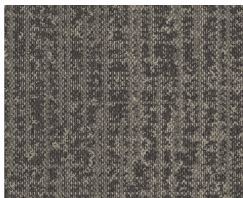


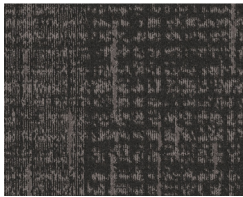
Manufacturer: Tarkett Hospitality
 Address: 285 Kraft Drive
 Dalton, GA 30721
 Phone: 301-974-2249
 Contact: Elle Pechiney
 Elle.Pechiney@Tarkett.com
 Web: tarketthospitality.com

Choose Tarkett Hospitality

- + Approved Styles
- + Lowest Pricing
- + Fast Delivery
- + 10-Year Warranty
- + Broadloom Carpet
- + Lextron Solution-Dyed Nylon



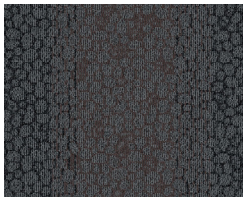
Product Type: Carpet Tile
 Corridor
 Choice Item: CP-01.1
 Style Number: CH01T
 Color Number: D1801
 Specs: 28 oz.
 Carpet Tile Size: 9" x 36" Plank



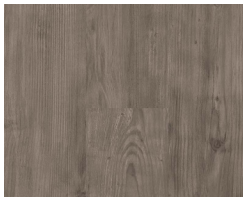
Product Type: Carpet Tile
 Corridor
 Choice Item: CP-01.2
 Style Number: CH02T
 Color Number: D1701
 Specs: 28 oz.
 Carpet Tile Size: 9" x 36" Plank



Product Type: Carpet Tile
 Corridor
 Choice Item: CP-01.3
 Style Number: CH04T
 Color Number: D3101
 Specs: 28 oz.
 Carpet Tile Size: 9" x 36" Plank



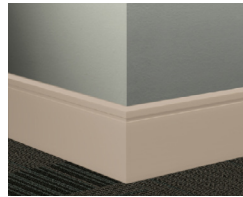
Product Type: Carpet Tile
 Elevator Lobby (Upper Floors)
 Choice Item: CP-01.4
 Style Number: CH03T
 Color Number: D2001
 Specs: 28 oz.
 Carpet Tile Size: 9" x 36" Plank



Product Type: LVT
 Guest Room
 Choice Item: RF-01
 iD Latitude™
 Style Number: PLWD
 Color: 5136 Acadia Pine
 Specs: 6" x 48" Plank



Product Type: Resilient Wall Base
 Guest Room
 Choice Item: RB-01
 Millwork Reveal Wall Base
 Style Number: MW-80-F
 Color Number: 80 Fawn
 Specs: .25" W x 4.25" H x 8' L



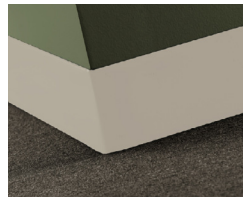
Product Type: Resilient Wall Base
 Fitness
 Choice Item: RB-02
 Millwork Reveal Wall Base
 Style Number: MW-49-F
 Color: 49 Beige
 Specs: .25" W x 4.25" H x 8' L



Product Type: Resilient Wall Base
 Meeting Room
 Choice Item: RB-04
 Millwork Reveal Wall Base
 Style Number: MW-TA5-F
 Color: TA5 Colonial Grey
 Specs: .25" W x 4.25" H x 8' L



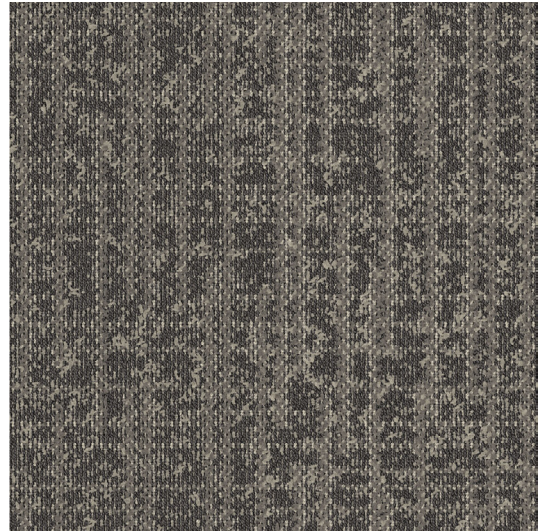
Product Type: Resilient Wall Base
 Corridor
 Choice Item: RB-05
 Millwork Reveal Wall Base
 Style Number: MW-TA8-F
 Color: TA8 Welsh Castle
 Specs: .25" W x 4.25" H x 8' L



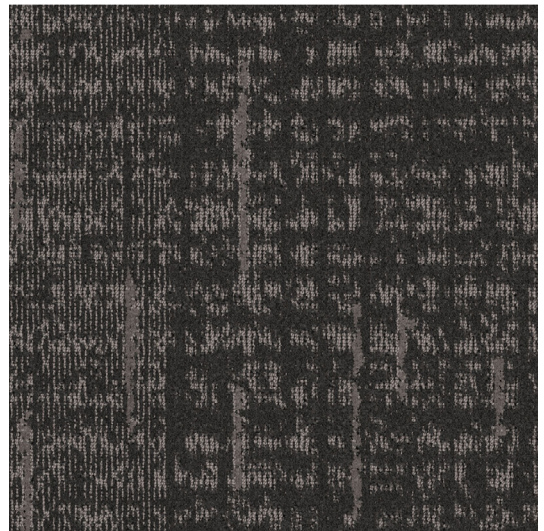
Product Type: Resilient Wall Base
 BOH Stairs
 Choice Item: RB-03
 Traditional Vinyl Wall Base
 Style Number: CB-22
 Color: 22 Pearl
 Specs: .125" W x 4" H x 120' L

Carpet Tile | Corridor

Description: Corridor
Choice Item: CP-01.1
Style Number: CH01T Carpet Tile
Color: D1801
Carpet Tile Size: 9" x 36"
Type: Dynamics Tile
Content: Lextron Enviro-Green Solution Dyed Nylon
Weight: 28 oz. tufted face weight
Primary Backing: Woven Polypropylene
Secondary Backing: Ethos® Modular w/Omnicoat Technology
Pile Height: .250" High, .200" Med
Gauge: 1/10"
Dye Method: Solution Dyed
Installation Method: (See Seaming Diagram)
Flame Requirements: Meets or exceeds requirement Class 1



Description: Corridor
Choice Item: CP-01.2
Style Number: CH02T Carpet Tile
Color: D1701
Carpet Tile Size: 9" x 36"
Type: Dynamics Tile
Content: Lextron Enviro-Green Solution Dyed Nylon
Weight: 28 oz. tufted face weight
Primary Backing: Woven Polypropylene
Secondary Backing: Ethos® Modular w/Omnicoat Technology
Pile Height: .250" High, .200" Med
Gauge: 1/10"
Dye Method: Solution Dyed
Installation Method: (See Seaming Diagram)
Flame Requirements: Meets or exceeds requirement Class 1

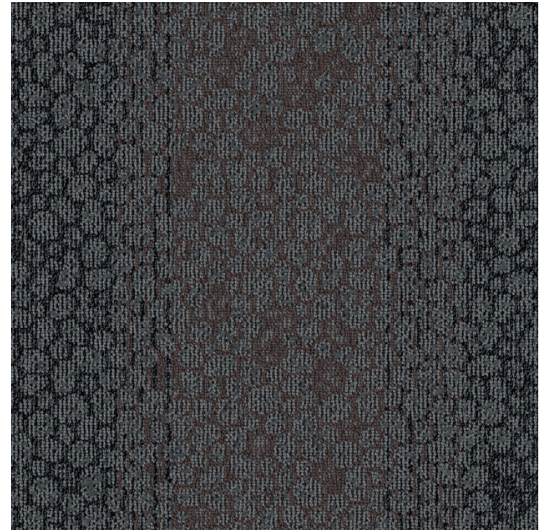


Description: Corridor
Choice Item: CP-01.3
Style Number: CH04T Carpet Tile
Color: D3101
Carpet Tile Size: 9" x 36"
Type: Dynamics Tile
Content: Lextron Enviro-Green Solution Dyed Nylon
Weight: 28 oz. tufted face weight
Primary Backing: Woven Polypropylene
Secondary Backing: Ethos® Modular w/Omnicoat Technology
Pile Height: .250" High, .200" Med
Gauge: 1/10"
Dye Method: Solution Dyed
Installation Method: (See Seaming Diagram)
Flame Requirements: Meets or exceeds requirement Class 1



Carpet Tile | Elevator Lobby

Description:	Elevator Lobby (Upper Floors)
Choice Item:	CP-01.4
Style Number:	CH03T Carpet Tile
Color:	D2001
Carpet Tile Size:	9" x 36"
Type:	Dynamics Tile
Content:	Lextron Enviro-Green Solution Dyed Nylon
Weight:	28 oz. tufted face weight
Primary Backing:	Woven Polypropylene
Secondary Backing:	Ethos® Modular w/Omnicoat Technology
Pile Height:	.250" High, .200" Med
Gauge:	1/10"
Dye Method:	Solution Dyed
Installation Method:	(See Seaming Diagram)
Flame Requirements:	Meets or exceeds requirement Class 1



Additional Information:

- Carpet should be installed in accordance with the Carpet and Rug Institute's standard CRI-104/CRI-105.
- Pattern streaks and banding are visually apparent streaking in patterned carpet resulting from linear juxtaposition of pattern elements visible in both length and width direction. IT IS NOT A CARPET DEFECT, but is inherent in solution dyed graphic and cut/loop patterns.
- All Specifications subject to normal manufacturing tolerance.

LVT Tile | Guestroom

	Standard	Tarkett Value
Choice Item:		RF-01
Classification:	ASTM 1700	Class III, Type B (Solid Vinyl Floor)
Surface Treatment:		Techtonic®
Size:		6" x 48"
Total Thickness:	ASTM F386	0.120" (3.05 mm)
Wear Layer Thickness:	ASTM F410	20 mil (0.51mm)
Installation Method:		Glue-Down
Pattern:		iD Latitude™
Pattern Type:		Wood
Color:		5136 Acadia Pine
Format Type:		Plank
Flexibility:	ASTM F137	Pass
Chemical Resistance:	ASTM F925	Passes
Static Load Limit:	ASTM F970	250 psi, ≤ 0.005"
Heat Stability:	ASTM F1514	ΔE ≤ 8.0
Light Stability:	ASTM F1515	ΔE ≤ 8.0
Slip resistance:	ASTM D2047	SCOF ≥ 0.5
Squareness:	ASTM F2055	Pass
Flammability:	ASTM E648	Class 1 (≥ 0.45 W/cm²)
Residual Indentation:	ASTM F1914	Pass
Commercial Warranty:		20-year limited

SureStart™ Underlayment 50003

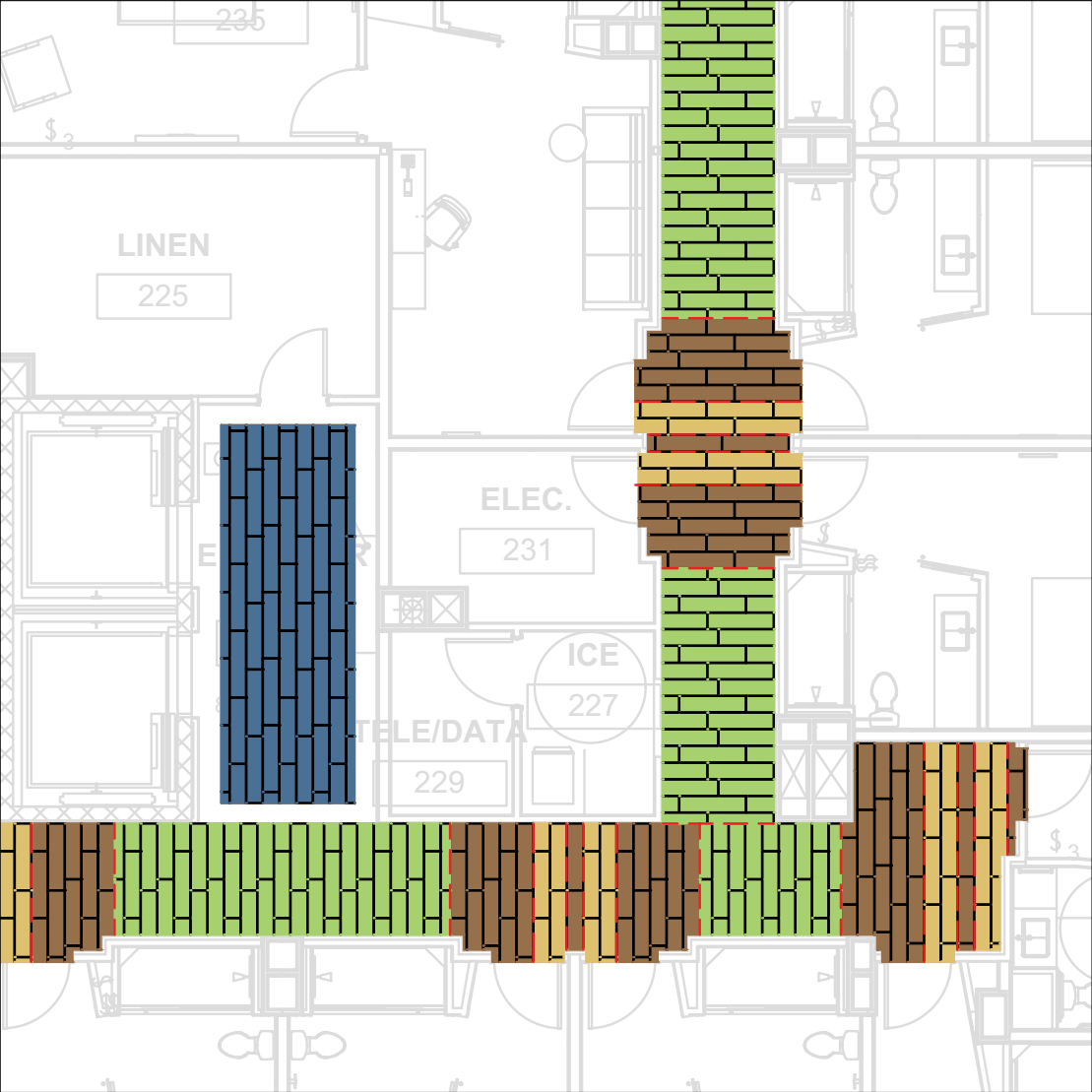
Product Type	Subflooring
Length	33.30 ft (10.1 m), 44.40 ft (13.5 m)
Total thickness	0.060" (1.5 mm)
Width	3 ft, 4.50 ft
Commercial Warranty	10 year limited light commercial



+TECHTONIC®
PROTECTION

Seaming Diagram

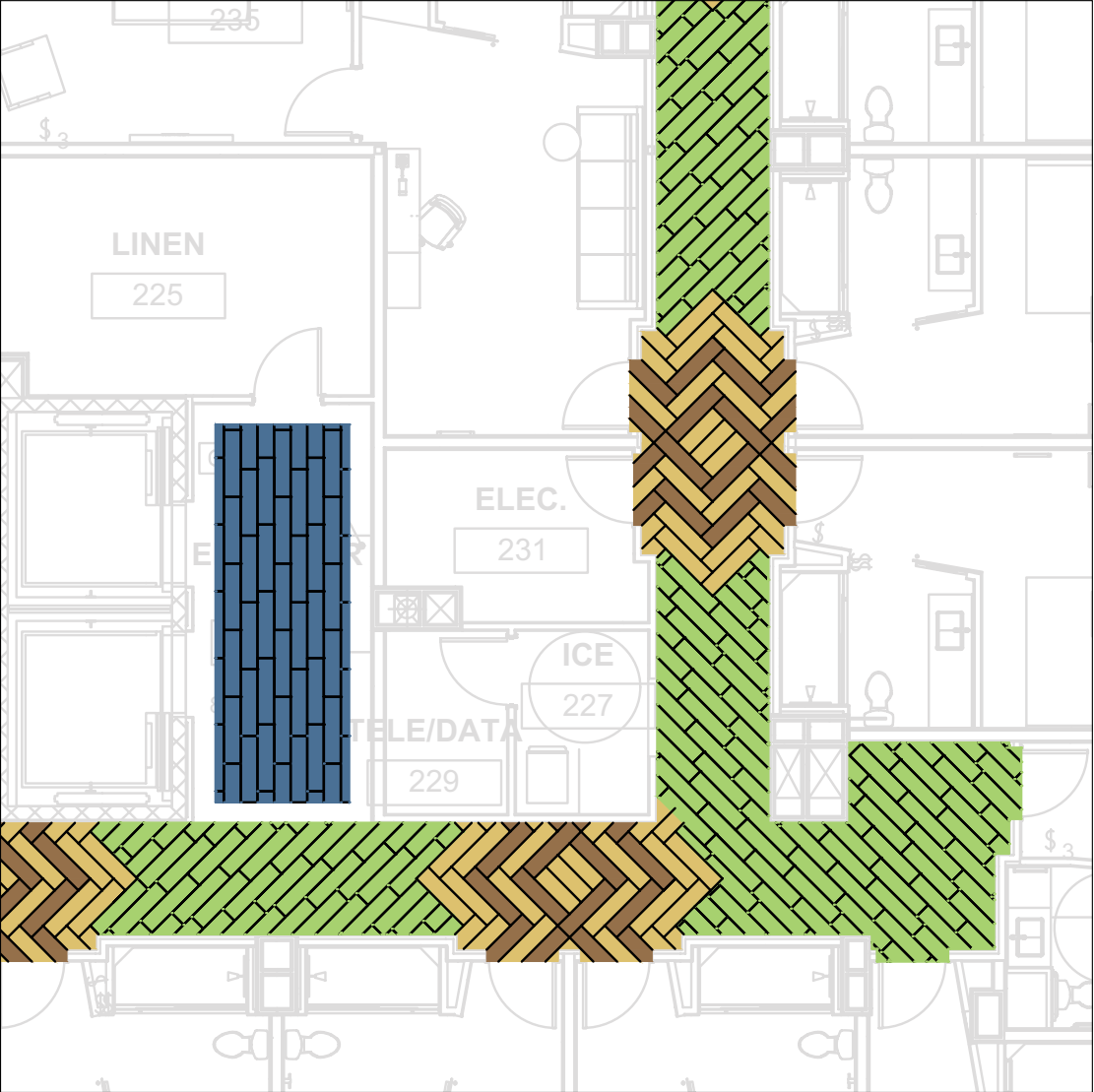
Option 1



Choice Item	Style Number	Width	Repeat	Description
CP-01.1	CH01T	9" x 36"	Tiles	Door Drop
CP-01.2	CH02T	9" x 36"	Tiles	Door Drop
CP-01.4	CH03T	9" x 36"	Tiles	Elevator Lobby
CP-01.3	CH04T	9" x 36"	Tiles	Corridor

Seaming Diagram

Option 2



Choice Item	Style Number	Width	Repeat	Description
CP-01.1	CH01T	9" x 36"	Tiles	Door Drop
CP-01.2	CH02T	9" x 36"	Tiles	Door Drop
CP-01.4	CH03T	9" x 36"	Tiles	Elevator Lobby
CP-01.3	CH04T	9" x 36"	Tiles	Corridor

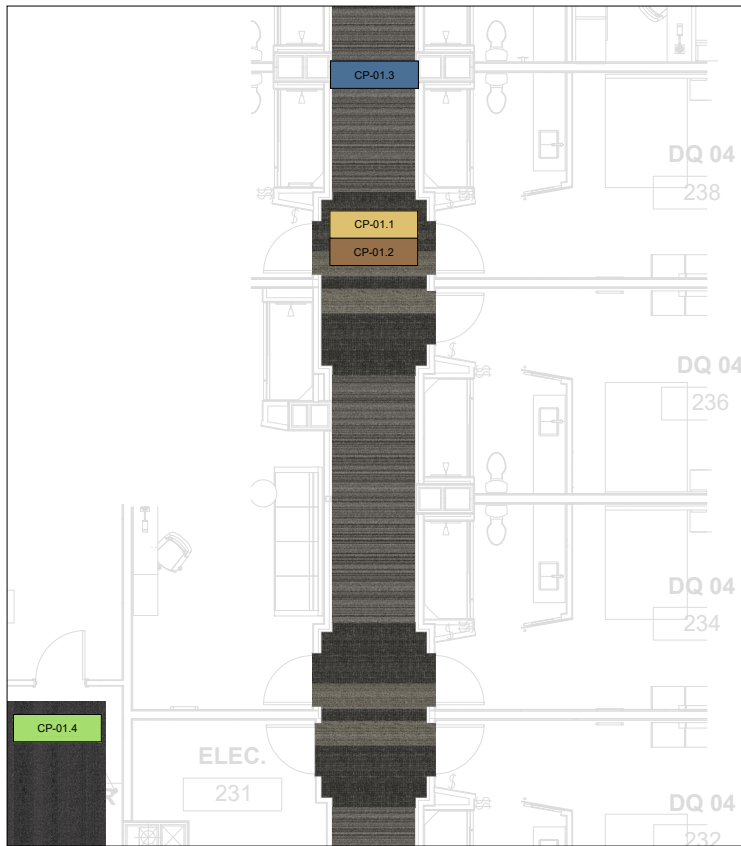
Program Details

Carpet Tile | Corridor

- There are (3) Carpet Tile designs used to create the Corridor install pattern
- Use either Opt. 1 or Opt. 2 Flood and Seaming Diagram as your guide
- There is (1) Carpet Tile design for the Elevator Lobby area

Corridor Diagrams

Option 1



Choice Item	Style Number	Width	Repeat	Description
CP-01.1	CH01T D1801	9" x 36"	Tiles	Door Drop
CP-01.2	CH02T D17801	9" x 36"	Tiles	Door Drop
CP-01.3	CH04T D3101	9" x 36"	Tiles	Corridor
CP-01.4	CH03T D2001	9" x 36"	Tiles	Elevator Lobby

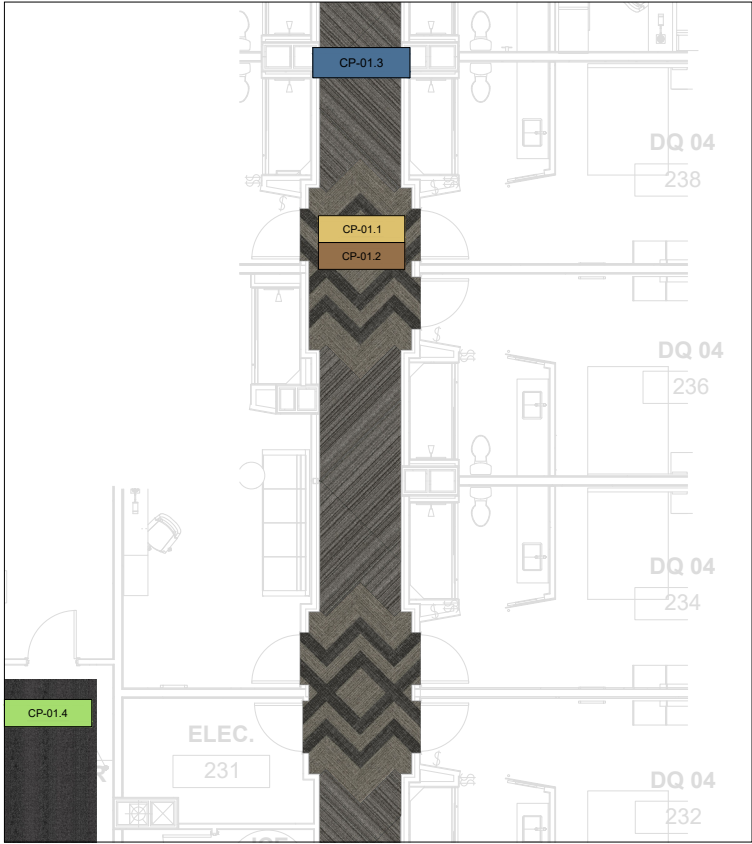
Program Details

Carpet Tile | Corridor

- There are (3) Carpet Tile designs used to create the Corridor install pattern
- Use either Opt. 1 or Opt. 2 Flood and Seaming Diagram as your guide
- There is (1) Carpet Tile design for the Elevator Lobby area

Corridor Diagrams

Option 2

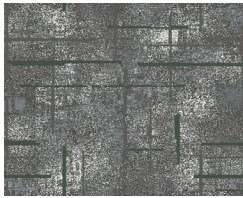


Choice Item	Style Number	Width	Repeat	Description
CP-01.1	CH01T D1801	9" x 36"	Tiles	Door Drop
CP-01.2	CH02T D17801	9" x 36"	Tiles	Door Drop
CP-01.3	CH04T D3101	9" x 36"	Tiles	Corridor
CP-01.4	CH03T D2001	9" x 36"	Tiles	Elevator Lobby

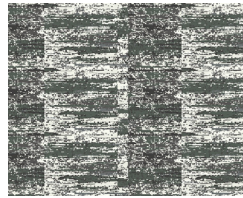
Manufacturer: Tarkett Hospitality
Address: 285 Kraft Drive
Dalton, GA 30721
Phone: 301-974-2249
Contact: Elle Pechiney
Elle.Pechiney@Tarkett.com
Web: tarketthospitality.com

Choose Tarkett Hospitality

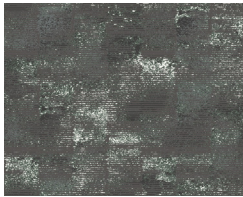
- + Approved Styles
- + Lowest Pricing
- + Fast Delivery
- + 10-Year Warranty
- + Broadloom Carpet
- + Lextron Solution-Dyed Nylon



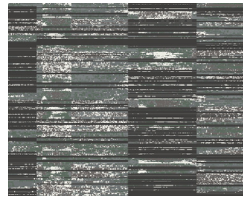
Product Type: Broadloom
Elevator Lobby - 1
Choice Item: CP-03 OPT 1
Style Number: CH45B
Color Number: 624
Specs: 78 oz.
Size: 15' 0"



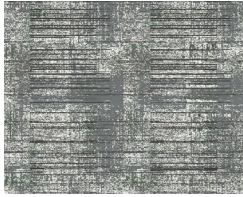
Product Type: Broadloom
Flex Room
Choice Item: CP-04 OPT 2
Style Number: CH44B
Color Number: 624
Specs: 78 oz.
Size: 15' 0"



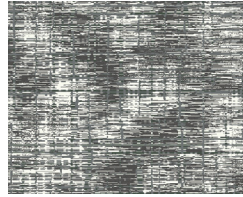
Product Type: Broadloom
Elevator Lobby - 2
Choice Item: CP-03 OPT 2
Style Number: CH46B
Color Number: 624
Specs: 78 oz.
Size: 15' 0"



Product Type: Broadloom
Dining / Hang Out
Choice Item: CP-06 OPT 1
Style Number: CH42B
Color Number: 624
Specs: 78 oz.
Size: 15' 0"



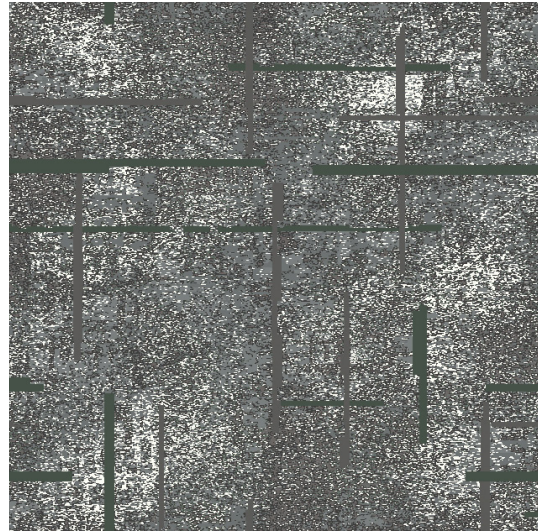
Product Type: Broadloom
Flex Room
Choice Item: CP-04 OPT 1
Style Number: CH43B
Color Number: 624
Specs: 78 oz.
Size: 15' 0"



Product Type: Broadloom
Dining / Hang Out
Choice Item: CP-06 OPT 2
Style Number: CH47B
Color Number: 624
Specs: 78 oz.
Size: 15' 0"

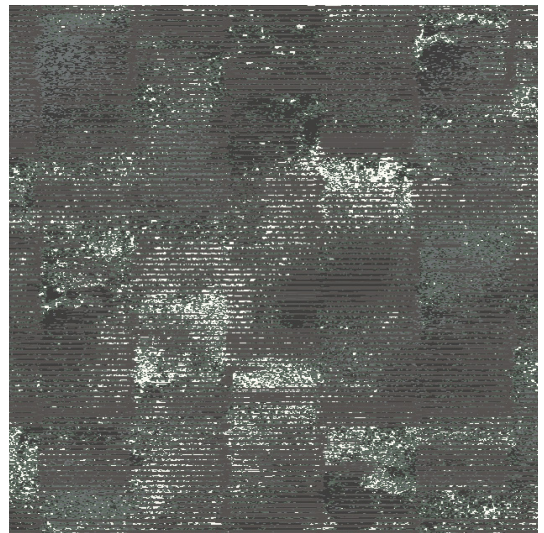
Elevator Lobby | Option 1

Style	CH45B
Color	624
Choice Item	CP-03-OPT 1
Construction	Intrepid Multi-Level Loop Tip Shear
Fiber	100% C.F. Lextron Enviro-Green Solution Dyed Nylon
Gauge	1/10
Tufted Pile Weight	42 oz. Per Sq. Yard
Pile Height	.250 High, .187 Med., .062 Low
Stitches Per Inch	7
Primary Backing	Woven Polypropylene
Secondary Backing	Unitary w/Action Bac
Dye	Solution Dyed
Total Weight	78 oz.
Width	15 ft.
Radiant Panel	Class 1
Smoke Density	Less than 450
Pattern Repeat	180 in. W x 91.43 in. L
Warranty	10 Year Wear Guarantee
Traffic Class	Heavy (Corridor/Public Spaces)



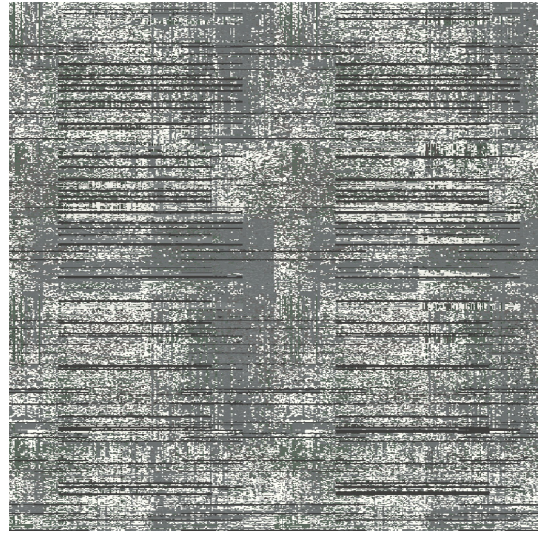
Elevator Lobby | Option 2

Style	CH46B
Color	624
Choice Item	CP-03-OPT 2
Construction	Intrepid Multi-Level Loop Tip Shear
Fiber	100% C.F. Lextron Enviro-Green Solution Dyed Nylon
Gauge	1/10
Tufted Pile Weight	42 oz. Per Sq. Yard
Pile Height	.250 High, .187 Med., .062 Low
Stitches Per Inch	7
Primary Backing	Woven Polypropylene
Secondary Backing	Unitary w/Action Bac
Dye Solution	Dyed
Total Weight	78 oz.
Width	15 ft.
Radiant Panel	Class 1
Smoke Density	Less than 450
Pattern Repeat	90 in. W x 91.43 in. L
Warranty	10 Year Wear Guarantee
Traffic Class	Heavy (Corridor/Public Spaces)



Flex Room | Option 1

Style	CH43B
Color	624
Choice Item	CP-06-OPT 1
Construction	Intrepid Multi-Level Loop Tip Shear
Fiber	100% C.F. Lextron Enviro-Green Solution Dyed Nylon
Gauge	1/10
Tufted Pile Weight	42 oz. Per Sq. Yard
Pile Height	.250 High, .187 Med., .062 Low
Stitches Per Inch	7
Primary Backing	Woven Polypropylene
Secondary Backing	Unitary w/Action Bac
Dye Solution	Dyed
Total Weight	78 oz.
Width	15 ft.
Radiant Panel	Class 1
Smoke Density	Less than 450
Pattern Repeat	90 in. W x 122.86 in. L
Warranty	10 Year Wear Guarantee
Traffic Class	Heavy (Corridor/Public Spaces)



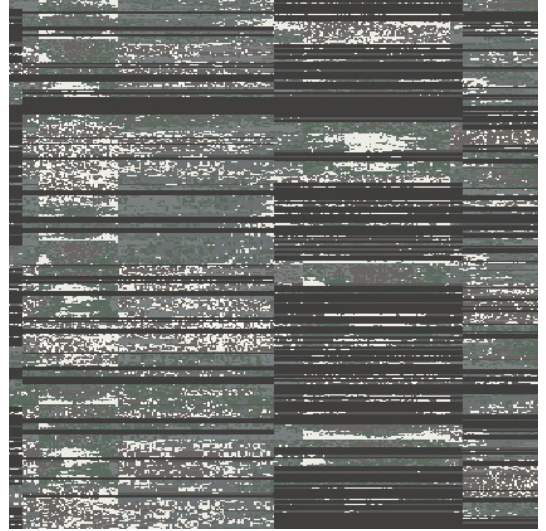
Flex Room | Option 2

Style	CH44B
Color	624
Choice Item	CP-06-OPT 2
Construction	Intrepid Multi-Level Loop Tip Shear
Fiber	100% C.F. Lextron Enviro-Green Solution Dyed Nylon
Gauge	1/10
Tufted Pile Weight	42 oz. Per Sq. Yard
Pile Height	.250 High, .187 Med., .062 Low
Stitches Per Inch	7
Primary Backing	Woven Polypropylene
Secondary Backing	Unitary w/Action Bac
Dye Solution	Dyed
Total Weight	78 oz.
Width	15 ft.
Radiant Panel	Class 1
Smoke Density	Less than 450
Pattern Repeat	60 in. W x 60 in. L
Warranty	10 Year Wear Guarantee
Traffic Class	Heavy (Corridor/Public Spaces)



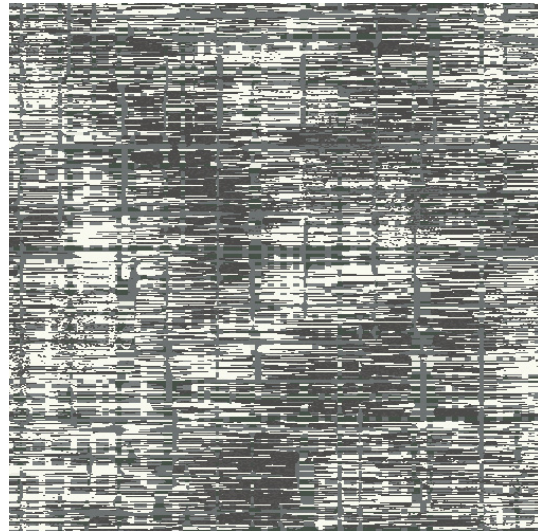
Dining/Hangout | Option 1

Style	CH42B
Color	624
Choice Item	CP-04-OPT 1
Construction	Intrepid Multi-Level Loop Tip Shear
Fiber	100% C.F. Lextron Enviro-Green Solution Dyed Nylon
Gauge	1/10
Tufted Pile Weight	42 oz. Per Sq. Yard
Pile Height	.250 High, .187 Med., .062 Low
Stitches Per Inch	7
Primary Backing	Woven Polypropylene
Secondary Backing	Unitary w/Action Bac
Dye Solution	Dyed
Total Weight	78 oz.
Width	15 ft.
Radiant Panel	Class 1
Smoke Density	Less than 450
Pattern Repeat	60 in. W x 60 in. L
Warranty	10 Year Wear Guarantee
Traffic Class	Heavy (Corridor/Public Spaces)



Dining/Hangout | Option 2

Style	CH47B
Color	624
Choice Item	CP-04-OPT 2
Construction	Intrepid Multi-Level Loop Tip Shear
Fiber	100% C.F. Lextron Enviro-Green Solution Dyed Nylon
Gauge	1/10
Tufted Pile Weight	42 oz. Per Sq. Yard
Pile Height	.250 High, .187 Med., .062 Low
Stitches Per Inch	7
Primary Backing	Woven Polypropylene
Secondary Backing	Unitary w/Action Bac
Dye Solution	Dyed
Total Weight	78 oz.
Width	15 ft.
Radiant Panel	Class 1
Smoke Density	Less than 450
Pattern Repeat	90 in. W x 71.42 in. L
Warranty	10 Year Wear Guarantee
Traffic Class	Heavy (Corridor/Public Spaces)



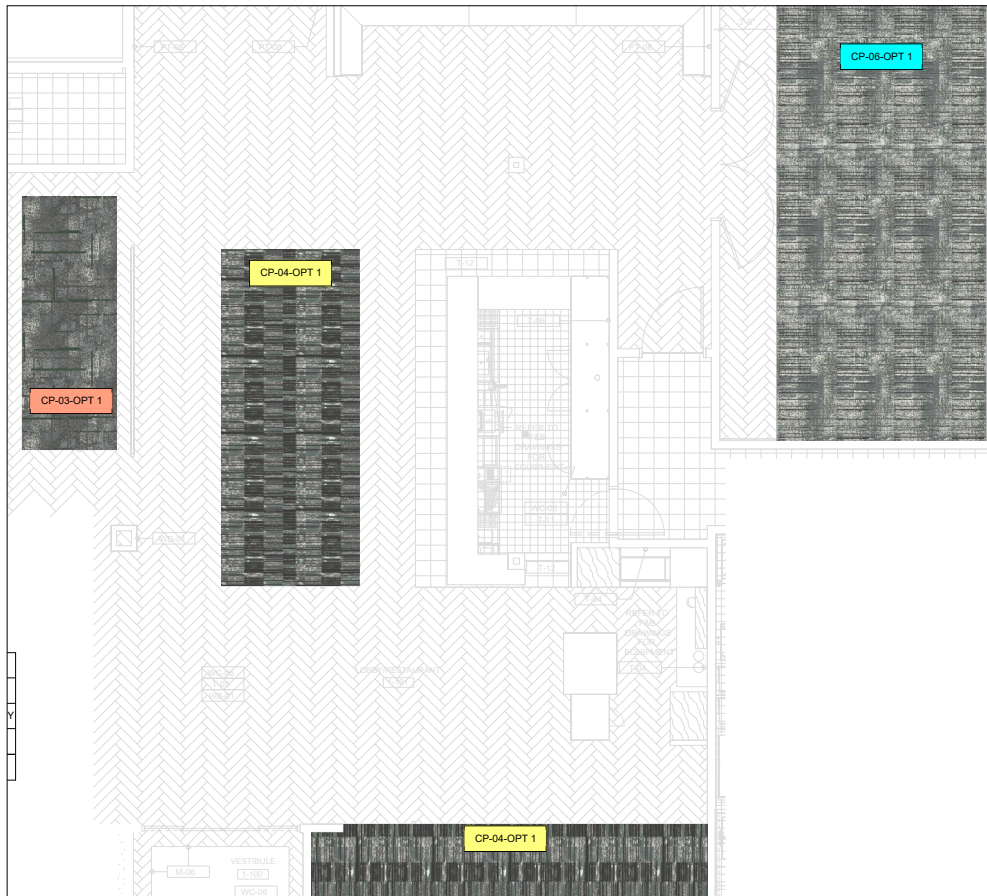
Program Details

Broadloom | Public Space

- There are (3) main areas: Dining Hangout, Flex Room and Elevator Lobby
- Each area has two design options
- Design options can be intermixed.
 - Example: Choose Opt. 1 Dining Hangout, Opt. 2 Flex Room, Opt. 2 Elevator Lobby
- Custom Color design is allowed. Use existing designs as guide.
 - Must match the same number of colors from the original and carry through all three areas.

Public Space Diagrams

Option 1



Choice Item	Style Number	Width	Repeat	Description
CP-03-OPT 1	CH45B 624	15' 0"	180" W x 91.43" L	Elevator Lobby
CP-04-OPT 1	CH42B 624	15' 0"	60" W x 60" L	Hang Out / Dining
CP-06-OPT 1	CH43B 624	15' 0"	90" W x 90" L	Flex Room

Program Details

Broadloom | Public Space

- There are (3) main areas: Dining Hangout, Flex Room and Elevator Lobby
- Each area has two design options
- Design options can be intermixed.
 - Example: Choose Opt. 1 Dining Hangout, Opt. 2 Flex Room, Opt. 2 Elevator Lobby
- Custom Color design is allowed. Use existing designs as guide.
 - Must match the same number of colors from the original and carry through all three areas.

Public Space Diagrams

Option 2



Choice Item	Style Number	Width	Repeat	Description
CP-03-OPT 2	CH46B 624	15' 0"	90" W x 90" L	Elevator Lobby
CP-04-OPT 2	CH47B 624	12' 0"	72" W x 72" L	Hang Out / Dining
CP-06-OPT 2	CH44B 624	12' 0"	72" W x 72" L	Flex Room



Tarkett Hospitality
285 Kraft Drive
Dalton, GA 30721

301-974-2249
tarketthospitality.com