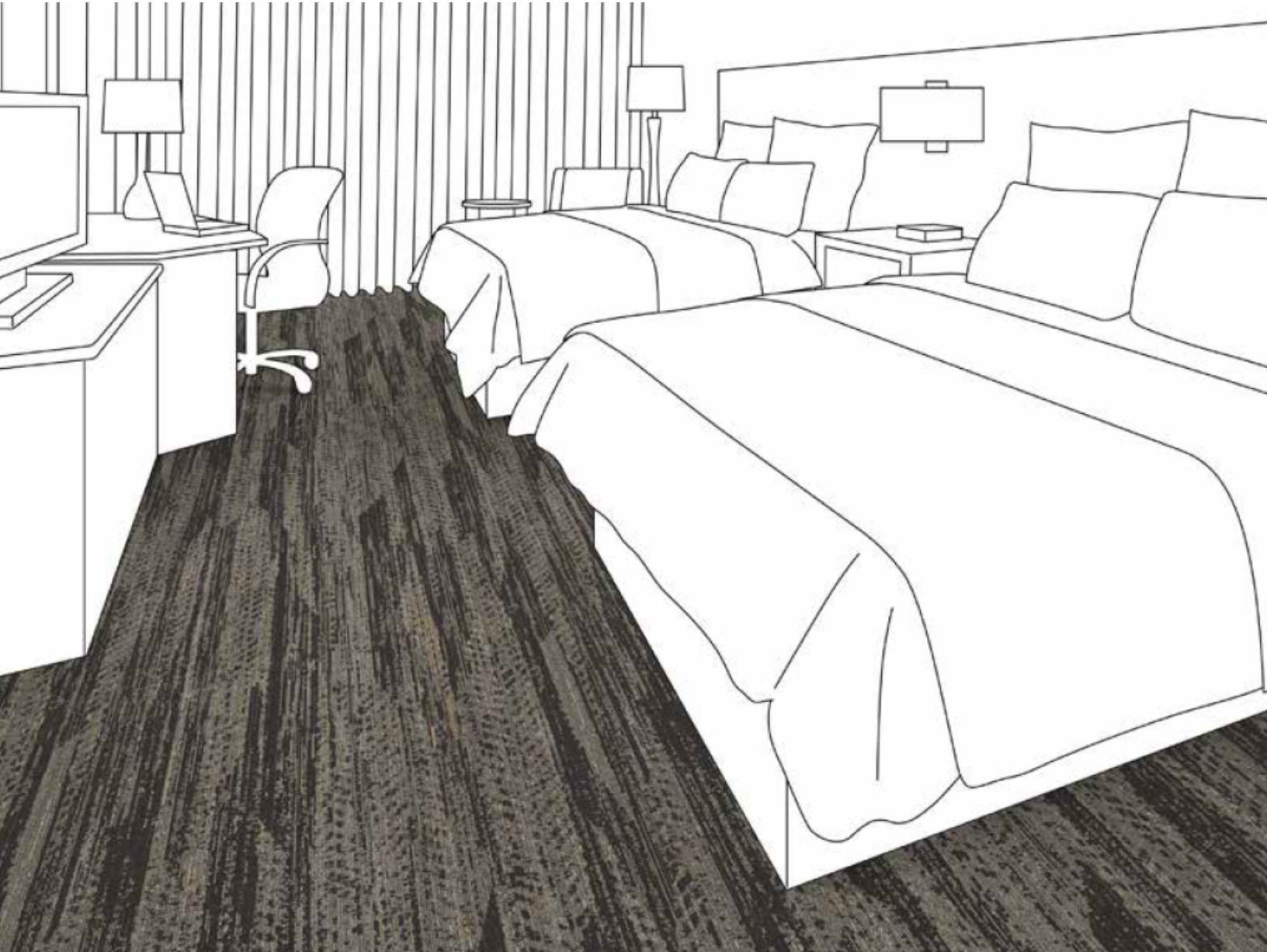


CHOICE HOTELS

Clarion Pointe



CHOICE HOTELS

Clarion Pointe, Compass Scheme



Manufacturer: Tarkett
Address: 285 Kraft Drive
Dalton, GA 30721
Phone: 706.277.3000
Contact: Jackie Passaro
Jackie.Passaro@tarkett.com
Contact: Amber Osiecki
Amber.Osiecki@tarkett.com
Web: www.tarketthospitality.com

Choose Tarkett

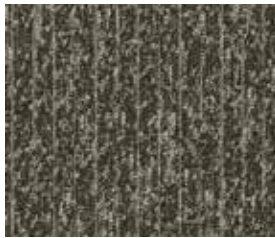
- + Approved Styles
- + Lowest Pricing
- + Fast Delivery
- + 10-Year Warranty
- + Broadloom Carpet
- + Lextron Solution-Dyed Nylon



+ Project Type: Corridor/Public Space
+ Pattern: A0010 (Double Boucle)
+ Colorway: Cozy Taupe (74208)
+ Installation: Horizontal or Vertical Ashlar
+ Tile Size: 9" x 36"
+ Specs: 15 oz.



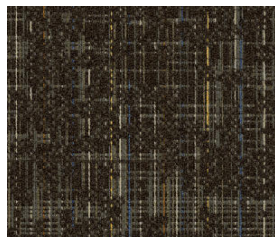
• Product Type: Guest Room
• Style Number: CP132
• Color Number: 220
• Specs: 32 oz. - 12' W
• Pattern Repeat: 48" x 84"



+ Project Type: Corridor/Public Space
+ Pattern: A0010 (Double Boucle)
+ Colorway: Warm Sable (74209)
+ Installation: Horizontal or Vertical Ashlar
+ Tile Size: 9" x 36"
+ Specs: 15 oz.



• Product Type: Corridor
• Style Number: CP136
• Color Number: 120
• Specs: 36 oz. - 12' W
• Pattern Repeat: 12 x 20"



+ Project Type: Guestroom
+ Pattern: 11130 ColorMap
+ Colorway: Mountain Soil 42806
+ Installation: Vertical Ashlar
+ Tile Size: 24" x 24"
+ Specs: 20 oz.



• Product Type: Cove Base
• Style Number: 728S
• Color Number: 193 (8517)
• Specs: 4"
• Cove Base works for both Schemes

CHOICE HOTELS

Clarion Pointe, Compass Scheme



Manufacturer: Tarkett
Address: 285 Kraft Drive
Dalton, GA 30721 706.277.3000
Phone: Amber Osiecki
Contact: Amber.Osiecki@tarkett.com
Web: www.tarketthospitality.com

Project Type: Corridor/Public Space Carpet Tile
Style Name: A0010 Double Boucle
Color: 74208 Cozy Taupe
Pattern Repeat: 36" x 36"
Radiant Panel: Class 1
Smoke Density: Less Than 450
Warranty: Lifetime Limited
Static Control: Below 3.0 KV

Environmental Information: CRI Green Label Plus™ Certified Stratatec®
Construction: Patterned Symtex® 1/13th
Gauge: 24 oz.
Tufted Pile Weight: High .25, Med .187, Low .0625
Finished Pile Height:



Additional Information

Carpet should be installed in accordance with the Carpet and Rug Institute's standard CRI-104. Carpet must be over manufacturer's recommended pad.

- Pattern streaks and banding are visually apparent streaking in patterned carpet resulting from linear juxtaposition of pattern elements visible in both length and width direction. IT IS NOT A CARPET DEFECT, but is inherent in solution dyed graphic and cut/loop patterns.

- All Specifications subject to normal manufacturing tolerance.

CHOICE HOTELS

Clarion Pointe, Corridor



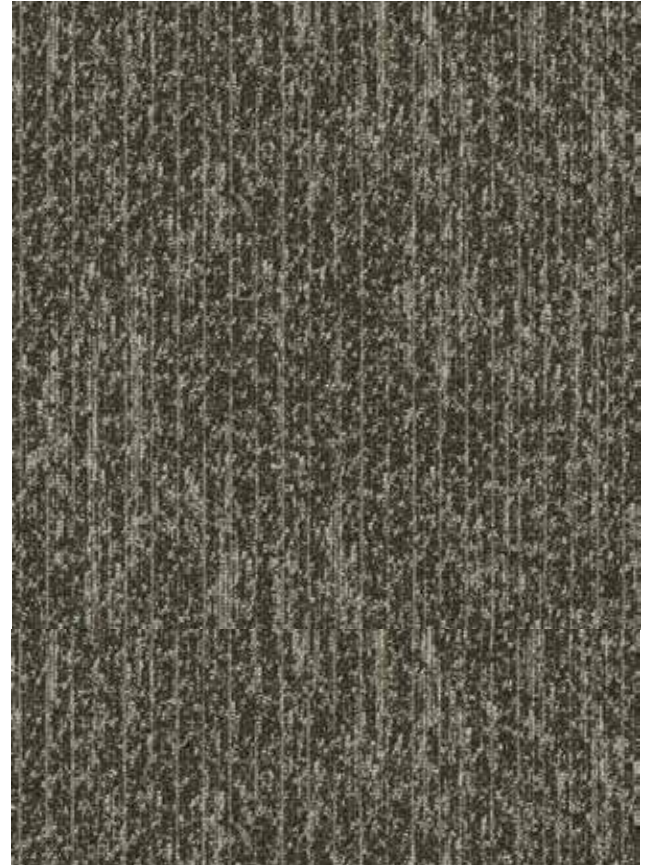
- + Clarion Pointe Corridor
- + Pattern: A0010 (Double Boucle)
- + Colorway: Cozy Taupe (74208)
- + Tile Size: 9" x 36"

CHOICE HOTELS

Clarion Pointe, Compass Scheme



Manufacturer: Tarkett
Address: 285 Kraft Drive
Dalton, GA 30721 706.277.3000
Phone: Jackie Passaro
Contact: Jackie.Passaro@tarkett.com
Amber Osiecki
Contact: Amber.Osiecki@tarkett.com
www.tarketthospitality.com
Web:
Corridor/Public Space Carpet Tile
Project Type: A0010 Double Boucle
Style Name: 74209 Warm Sable
Color: 36" x 36"
Pattern Repeat: Class 1
Radiant Panel: Less Than 450
Smoke Density: Lifetime Limited
Warranty: Below 3.0 KV
Static Control:
Environmental Information: CRI Green Label Plus™ Certified
Stratatec® Patterned Symtex®
Construction: 1/13th
Gauge: 24 oz.
Tufted Pile Weight: High .25, Med .187, Low .0625
Finished Pile Height:



Additional Information

Carpet should be installed in accordance with the Carpet and Rug Institute's standard CRI-104. Carpet must be over manufacturer's recommended pad.

- Pattern streaks and banding are visually apparent streaking in patterned carpet resulting from linear juxtaposition of pattern elements visible in both length and width direction. IT IS NOT A CARPET DEFECT, but is inherent in solution dyed graphic and cut/loop patterns.

- All Specifications subject to normal manufacturing tolerance.

CHOICE HOTELS

Clarion Pointe, Corridor



- + Corridor/Public Space
- + Pattern: A0010 (Double Boucle)
- + Colorway: Warm Sable (74209)
- + Tile Size: 9" x 36"

 **Tarkett** Hospitality

CHOICE HOTELS

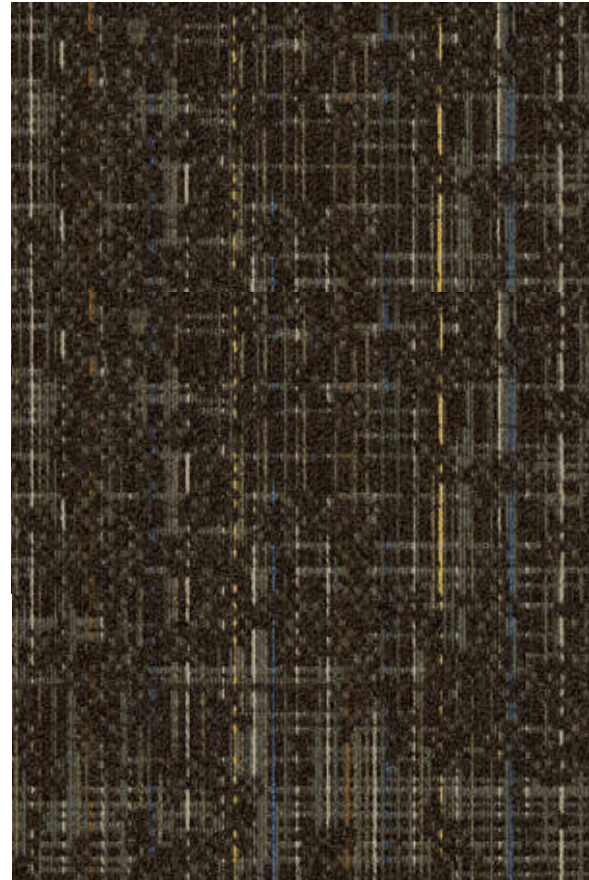
Clarion Pointe, Guest Rooms



Manufacturer: Tarkett
Address: 285 Kraft Drive
Dalton, GA 30721
Phone: 706.277.3000
Contact: Jackie Passaro
Jackie.Passaro@tarkett.com
Contact: Amber Osiecki
Amber.Osiecki@tarkett.com
Web: www.tarketthospitality.com

Project Type: Guestroom Carpet Tile
Style Name: 11130 ColorMap
Color: 42806 Mountain Soil
Pattern Repeat: 24" x 24"
Radiant Panel: Class 1
Smoke Density: Less Than 450
Warranty: Lifetime Limited
Static Control: Below 3.0 KV
Secondary Backing: ethos® Modular with Omniccoat Technology™

Environmental Information: CRI Green Label Plus™ Certified
Construction: Stratatec® Patterned Symtex®
Gauge: 1/13th
Tufted Pile Weight: 24 oz.
Finished Pile Height: High .25, Med .187, Low .0625



Enviro-Green yarn has 10% pre-consumer recycled content.
Recommended for Moderate (Rooms) carpet traffic levels.
NOTE: Due to the manufacturing process of a tip shear product, the finished yarn weight will vary more than normal manufacturing tolerances and side match cannot be guaranteed.

Carpet should be installed in accordance with the Carpet and Rug Institute's standard CRI-104. Carpet must be over manufacturer's recommended pad. Pattern streaks and banding are visually apparent streaking in patterned carpet resulting from linear juxtaposition of pattern elements visible in both length and width direction. IT IS NOT A CARPET DEFECT, but is inherent in solution dyed graphic and cut/loop patterns. All Specifications subject to normal manufacturing tolerance.

CHOICE HOTELS

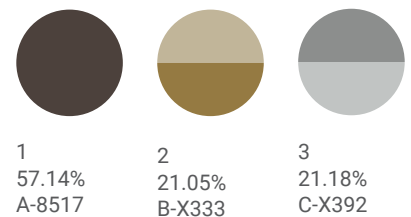
Clarion Pointe, Guest Rooms



Manufacturer: Tarkett
Address: 285 Kraft Drive
Dalton, GA 30721
Phone: 706.277.3000
Contact: Jackie Passaro
Jackie.Passaro@tarkett.com
Contact: Amber Osiecki
Amber.Osiecki@tarkett.com
Web: www.tarketthospitality.com

GUEST ROOM

Style: CP132
Color: 220
Construction: Dynamics – Servo-Scroll Loop Tip Shear
Fiber: 100% C.F. Lextron Enviro-Green Nylon
Gauge: 1/10
Tufted Pile Weight: 32 oz. Per Sq. Yard
Pile Height: .250" High - .062" Low
Stitches Per Inch: 10
Primary Backing: Woven Polypropylene
Secondary Backing: Action Bac
Dye: Solution Dyed
Total Weight: 68 oz.
Width: 12 ft.
Radiant Panel: Class 1
Smoke Density: Less than 450
Pattern Repeat: 48"W x 84"L
Warranty: 10-Year Wear Guarantee
Traffic Class: Moderate (Rooms)



Enviro-Green yarn has 10% pre-consumer recycled content.

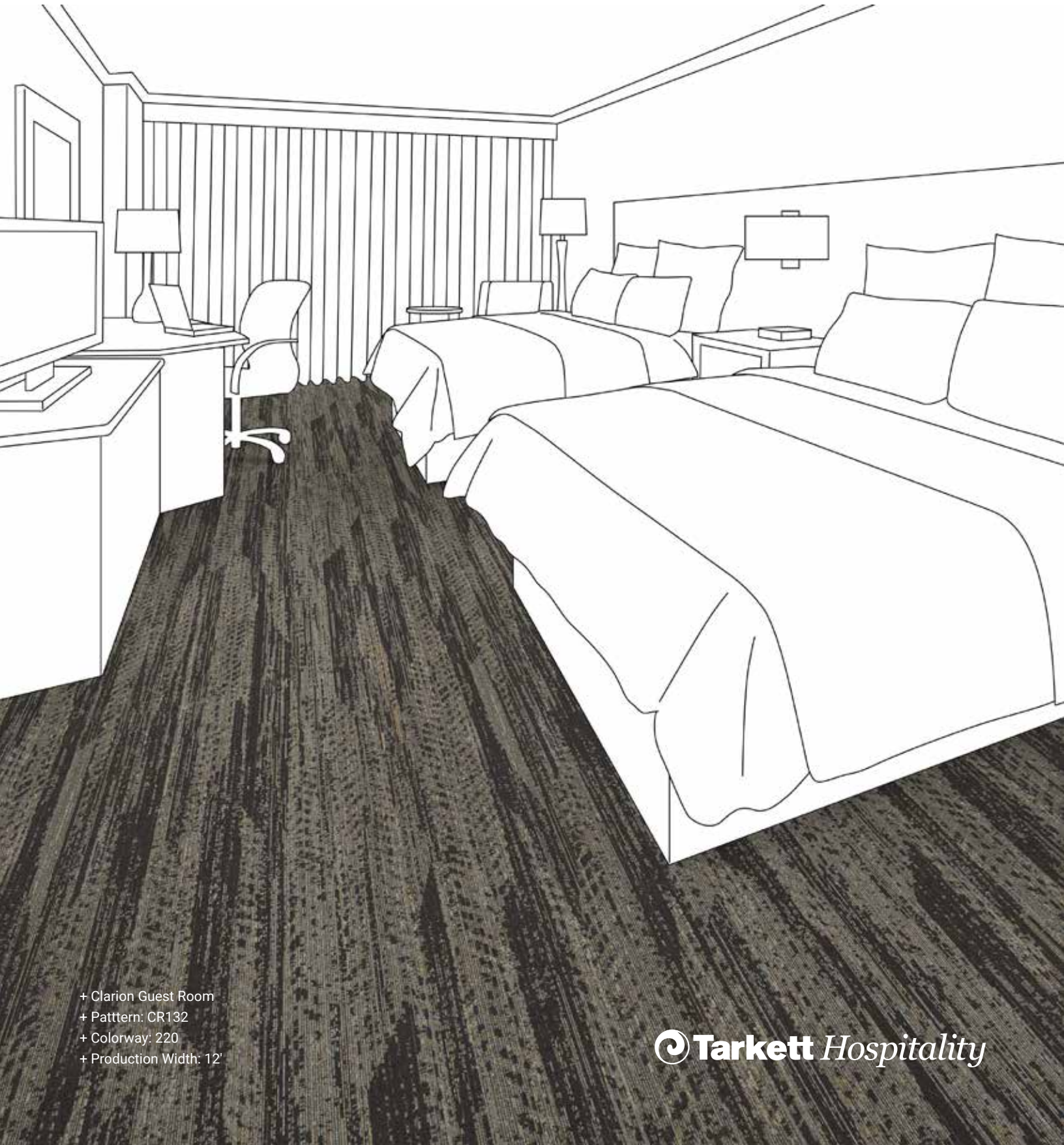
Recommended for Moderate (Rooms) carpet traffic levels.

NOTE: Due to the manufacturing process of a tip shear product, the finished yarn weight will vary more than normal manufacturing tolerances and side match cannot be guaranteed.

Carpet should be installed in accordance with the Carpet and Rug Institute's standard CRI-104. Carpet must be over manufacturer's recommended pad. Pattern streaks and banding are visually apparent streaking in patterned carpet resulting from linear juxtaposition of pattern elements visible in both length and width direction. IT IS NOT A CARPET DEFECT, but is inherent in solution dyed graphic and cut/loop patterns. All Specifications subject to normal manufacturing tolerance.

CHOICE HOTELS

Clarion Pointe, Guest Rooms



- + Clarion Guest Room
- + Pattern: CR132
- + Colorway: 220
- + Production Width: 12'

CHOICE HOTELS

Clarion Pointe, Corridor



Manufacturer: Tarkett
Address: 285 Kraft Drive
Dalton, GA 30721
Phone: 706.277.3000
Contact: Jackie Passaro
Jackie.Passaro@tarkett.com
Contact: Amber Osiecki
Amber.Osiecki@tarkett.com
Web: www.tarketthospitality.com

CORRIDOR

Style: CP136
Color: 120
Construction: Dynamics – Servo-Scroll Loop Tip Shear
Fiber: 100% C.F. Lextron Enviro-Green Nylon
Gauge: 1/10
Tufted Pile Weight: 36 oz. Per Sq. Yard
Pile Height: .250" High - .062" Low
Stitches Per Inch: 12
Primary Backing: Woven Polypropylene
Secondary Backing: Unitary with Action Bac
Dye: Solution Dyed
Total Weight: 72 oz.
Width: 12 ft.
Radiant Panel: Class 1
Smoke Density: Less than 450
Pattern Repeat: 12"W x 20"L
Warranty: 10-Year Wear Guarantee
Traffic: Heavy (Corridor/Public Space)



1
31.53%
A-8519

2
63.19%
B-8517

Enviro-Green yarn has 10% pre-consumer recycled content.
Recommended for Moderate (Rooms) carpet traffic levels.
NOTE: Due to the manufacturing process of a tip shear product, the finished yarn weight will vary more than normal manufacturing tolerances and side match cannot be guaranteed.

Carpet should be installed in accordance with the Carpet and Rug Institute's standard CRI-104. Carpet must be over manufacturer's recommended pad. Pattern streaks and banding are visually apparent streaking in patterned carpet resulting from linear juxtaposition of pattern elements visible in both length and width direction. IT IS NOT A CARPET DEFECT, but is inherent in solution dyed graphic and cut/loop patterns. All Specifications subject to normal manufacturing tolerance.

CHOICE HOTELS

Clarion Pointe, Guest Rooms



- + Clarion Public Space
- + Pattern: CR136
- + Colorway: 120
- + Production Width: 12'

 **Tarkett** Hospitality