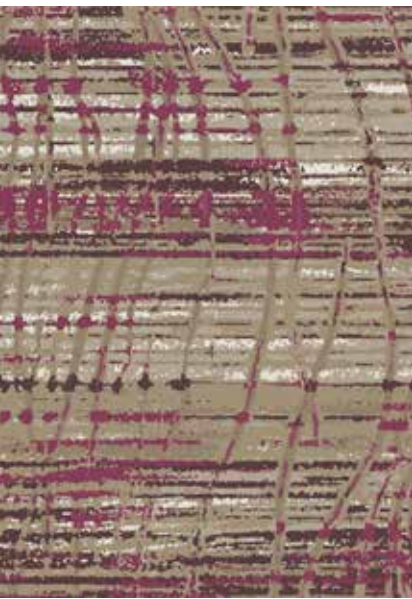
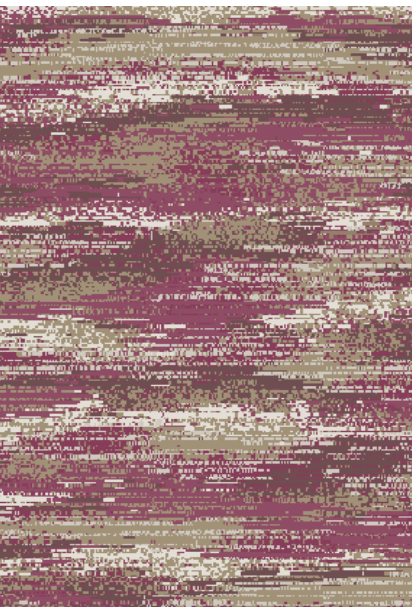


# Revive Scheme

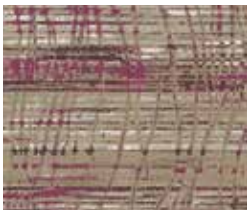




- Product Type: Corridor
- Style Number: HG16B  
(15' option: HG11B/110)
- Color Number: 110
- Item Number: C-11
- Specs: 36 oz. – 12' Width
- Pattern Repeat: 36" x 54.86"



- Product Type: Back of House
- Style Number: HG15B  
(15' available upon request)
- Color Number: 150
- Specs: 32 oz. – 12' Width
- Pattern Repeat: 36" x 59"



- Product Type: Meeting Room
- Style Number: HG17B  
(15' option: HG12B/120)
- Color Number: 120
- Item Number: C-13
- Specs: 36 oz. – 12' Width
- Pattern Repeat: 72" x 98.29"



- Product Type: Millwork Profile Wall Base
- Style Number: Mandalay MW-55-S4
- Item Number: B-01
- Color/Finish: 55 Silver Grey
- Specs: 4.0" x .250"
- Area: Guest Rooms



- Product Type: Lobby
- Style Number: HG18B  
(15' option: HG13B/130)
- Color Number: 130
- Item Number: C-10
- Specs: 36 oz. – 12' Width
- Pattern Repeat: 72" x 72"



- Product Type: Millwork Profile Wall Base
- Style Number: Mandalay MW-29-S4
- Item Number: B-06
- Color/Finish: 29 Moon Rock
- Specs 4.0" x .250"
- Area: Public Space, Fitness Center



- Product Type: Guest Room
- Style Number: HG19B  
(12' W option: HG14B/140)
- Color Number: 140
- Item Number: C-01
- Specs: 32 oz. – 13' Width
- Pattern Repeat: 39" x 41.60"

Revive Scheme  
CORRIDOR, BROADLOOM

C-11 Supplier C



# Revive Scheme

CORRIDOR, BROADLOOM



Issue Date: October 2019  
Area Name: Public Area- Corridor / Elevator Lobby  
Item Number: C-11 Supplier C / C-12 Supplier C

Manufacturer: Tarkett  
Address: 285 Kraft Drive  
Dalton, GA 30721  
Phone: 706.277.3000  
Contact: Jackie Passaro  
E-mail: jackie.passaro@tarkett.com  
Web: www.tarkettna.com

Description: Carpet @ Corridor - Broadloom (CYP)  
Style Number: HG16B (15' option: HG11B/110)  
Color: 110  
Width: 12' (Alternate 15' available upon request)  
Repeat: 36"W x 54.86"L  
Type: Intrepid multi-level loop tip-shear  
Content: Lextron Enviro-Green SD Nylon  
Weight: 36 oz. tufted face weight  
Primary Backing: Woven Polypropylene  
Secondary Backing: Unitary Action Bac  
Pile Height: .281" average pile thickness  
Gauge: 1/10"  
Stitches Per Sq Inch: 10  
Dye Method: Solution Dyed  
Installation Method: Broadloom  
Flame Requirements: Meets or exceeds requirement Class 1



8520

8523

2511

2508

### Notes:

Manufacturer to confirm the carpet meets Hilton Design and Construction standards as noted in section 2514.03.

### Instructions:

- Installer to provide all materials and equipment for complete installation, seaming diagrams, and full carpet layouts for all areas per manufacturer's recommendation.
- All quantities to be verified by installer.
- All interior design submittals MUST be presented to [projecthub.hilton.com](http://projecthub.hilton.com) for review prior to implementation.

No printed material contained here-in may be reproduced without written permission of Tarkett Hospitality. Due to variations in monitors, printers and light sources, we cannot guarantee that the colors in this image will be an exact match to your colors. 285 Kraft Drive Dalton, GA 30721

Revive Scheme  
PUBLIC AREA, MEETING ROOM

C-13 Supplier C



# Revive Scheme

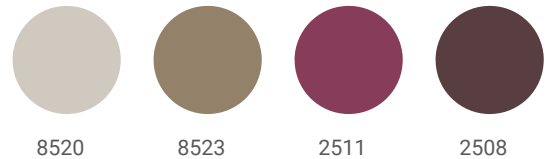
PUBLIC AREA, MEETING ROOM



Issue Date: October 2019  
Area Name: Public Area- Meeting Room  
Item Number: C-13 Supplier C

Manufacturer: Tarkett  
Address: 285 Kraft Drive  
Dalton, GA 30721  
Phone: 706.277.3000  
Contact: Jackie Passaro  
E-mail: jackie.passaro@tarkett.com  
Web: www.tarkettna.com

Description: Carpet @ Meeting Room - Broadloom  
Style Number: (CYP) HG17B (15' option: HG12B/120)  
Color: 120  
Width: 12' (Alternate 15' available upon request)  
Repeat: 72"W x 98.29"L  
Type: Intrepid multi-level loop tip-shear  
Content: Lextron Enviro-Green SD Nylon  
Weight: 36 oz. tufted face weight  
Primary Backing: Woven Polypropylene  
Secondary Backing: Unitary Action Bac  
Pile Height: .281" average pile thickness  
Gauge: 1/10"  
Stitches Per Sq Inch: 10  
Dye Method: Solution Dyed  
Installation Method: Broadloom  
Flame Requirements: Meets or exceeds requirement Class 1



## Notes:

Manufacturer to confirm the carpet meets Hilton Design and Construction standards as noted in section 2514.03.

## Instructions:

- Installer to provide all materials and equipment for complete installation, seaming diagrams, and full carpet layouts for all areas per manufacturer's recommendation.
- All quantities to be verified by installer.
- All interior design submittals MUST be presented to [projecthub.hilton.com](http://projecthub.hilton.com) for review prior to implementation.

No printed material contained here-in may be reproduced without written permission of Tarkett Hospitality. Due to variations in monitors, printers and light sources, we cannot guarantee that the colors in this image will be an exact match to your colors. 285 Kraft Drive Dalton, GA 30721

**Revive Scheme**  
PUBLIC AREA, LOBBY

C-10 Supplier C



# Revive Scheme

PUBLIC AREA, LOBBY



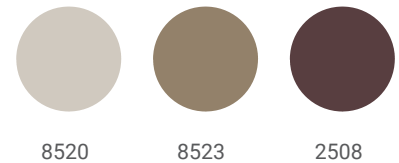
Issue Date: October 2019  
Area Name: Public Area- Lobby  
Item number: C-10 Supplier C

---

Manufacturer: Tarkett  
Address: 285 Kraft Drive  
Dalton, GA 30721  
Phone: 706.277.3000  
Contact: Jackie Passaro  
E-mail: jackie.passaro@tarkett.com  
Web: www.tarkettna.com

---

Description: Carpet @ Lobby - Broadloom (CYP)  
Style Number: HG18B (15' option: HG13B/130)  
Color: 130  
Width: 12' (Alternate 15' available upon request)  
Repeat: 72"W x 72"L  
Type: Intrepid multi-level loop tip-shear  
Content: Lextron Enviro-Green SD Nylon  
Weight: 36 oz. tufted face weight  
Primary Backing: Woven Polypropylene  
Secondary Backing: Unitary Action Bac  
Pile Height: .281" average pile thickness  
Gauge: 1/10"  
Stitches Per Sq Inch: 10  
Dye Method: Solution Dyed  
Installation Method: Broadloom  
Flame Requirements: Meets or exceeds requirement Class 1



### Notes:

Manufacturer to confirm the carpet meets Hilton Design and Construction standards as noted in section 2514.03.

### Instructions:

- Installer to provide all materials and equipment for complete installation, seaming diagrams, and full carpet layouts for all areas per manufacturer's recommendation.
- All quantities to be verified by installer.
- All interior design submittals MUST be presented to [projecthub.hilton.com](http://projecthub.hilton.com) for review prior to implementation.

No printed material contained here-in may be reproduced without written permission of Tarkett Hospitality. Due to variations in monitors, printers and light sources, we cannot guarantee that the colors in this image will be an exact match to your colors. 285 Kraft Drive Dalton, GA 30721



**Revive Scheme**  
GUEST ROOM, BROADLOOM

C-01 Supplier C



# Revive Scheme

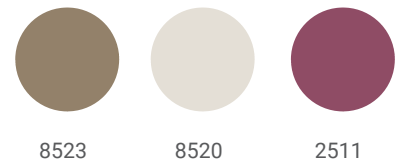
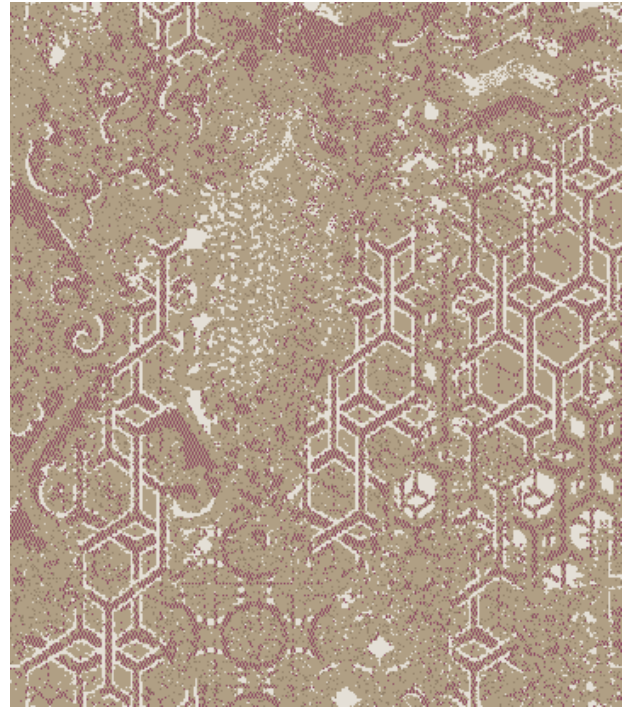
GUEST ROOM, BROADLOOM



Issue Date: October 2019  
Area Name: Guest Rooms  
Item Number: C-01 Supplier C

Manufacturer: Tarkett  
Address: 285 Kraft Drive  
Dalton, GA 30721  
Phone: 706.277.3000  
Contact: Jackie Passaro  
E-mail: jackie.passaro@tarkett.com  
Web: www.tarkettna.com

Description: Carpet @ Guest Rooms - Broadloom (CYP)  
Style Number: HG19B  
Color: 140  
Width: 13' (12' W option: HG14B/140)  
Repeat: 39"W x 41.60"L  
Type: Intrepid multi-level loop tip-shea  
Content: Lextron Enviro-Green SD Nylon  
Weight: 32 oz. tufted face weight  
Primary Backing: Woven Polypropylene  
Secondary Backing: Unitary Action Bac  
Pile Height: .281" average pile thickness  
Gauge: 1/10"  
Stitches Per Sq Inch: 10  
Dye Method: Solution Dyed  
Installation Method: Broadloom  
Flame Requirements: Meets or exceeds requirement Class 1



**Notes:**

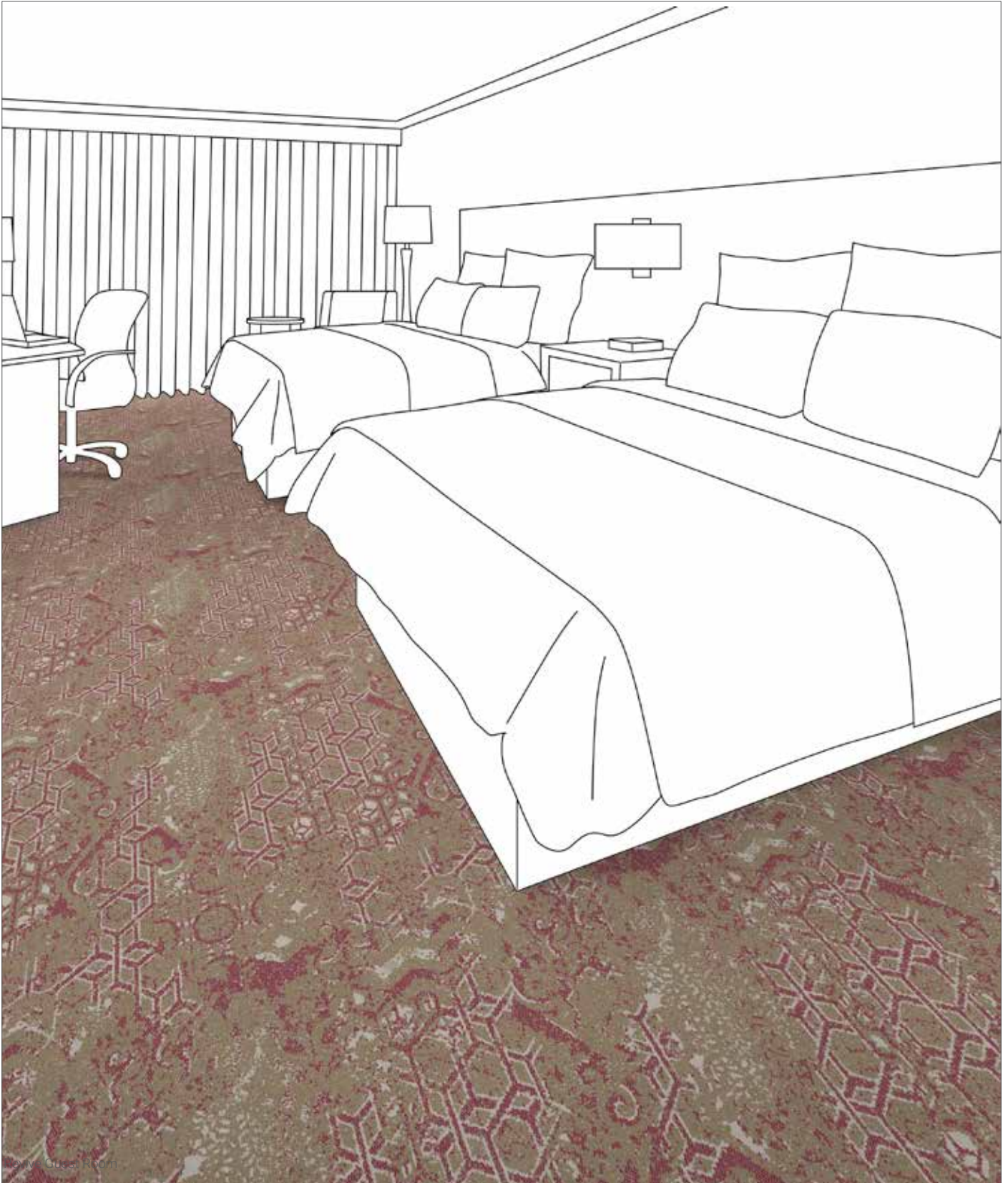
Manufacturer to confirm the carpet meets Hilton Design and Construction standards as noted in section 2514.03.

**Instructions:**

- Installer to provide all materials and equipment for complete installation, seaming diagrams, and full carpet layouts for all areas per manufacturer's recommendation.
- All quantities to be verified by installer.
- All interior design submittals MUST be presented to [projecthub.hilton.com](http://projecthub.hilton.com) for review prior to implementation.

No printed material contained here-in may be reproduced without written permission of Tarkett Hospitality. Due to variations in monitors, printers and light sources, we cannot guarantee that the colors in this image will be an exact match to your colors. 285 Kraft Drive Dalton, GA 30721

**Revive Scheme**  
GUEST ROOM, BROADLOOM



**Revive Scheme**

BACK OF HOUSE, BROADLOOM

C-14 Supplier C



# Revive Scheme

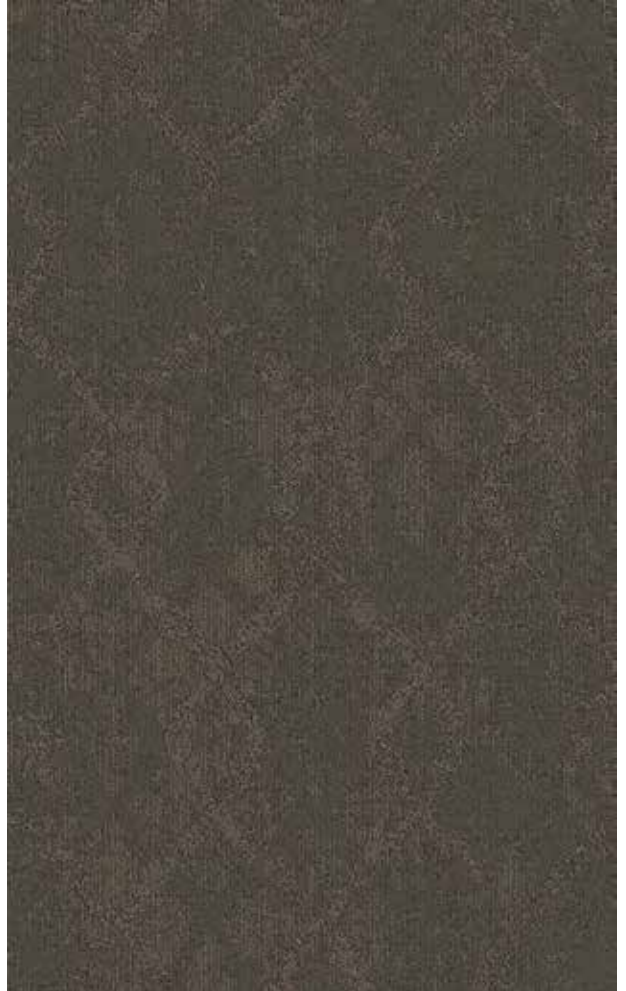
BACK OF HOUSE, BROADLOOM



Issue Date: October 2019  
Area Name: Back of House  
Item Number: C-14 Supplier C

Manufacturer: Tarkett  
Address: 285 Kraft Drive  
Dalton, GA 30721  
Phone: 706.277.3000  
Contact: Jackie Passaro  
E-mail: jackie.passaro@tarkett.com  
Web: www.tarkettna.com

Description: Carpet @ Back of House - Broadloom  
Style Number: (Tufted) HG15B (15' available upon request)  
Color: 150  
Width: 12'  
Repeat: 36"W x 59"L  
Type: DYN Loop Tip-Sheared  
Content: Lextron Enviro-Green SD Nylon  
Weight: 32 oz. tufted face weight  
Primary Backing: Woven Polypropylene  
Secondary Backing: Action Bac  
Pile Height: .281" average pile thickness  
Gauge: 1/10"  
Stitches Per Sq Inch: 10  
Dye Method: Solution Dyed  
Installation Method: Broadloom  
Flame Requirements: Meets or exceeds requirement Class 1



## Notes:

Manufacturer to confirm the carpet meets Hilton Design and Construction standards as noted in section 2514.03.

## Instructions:

- Installer to provide all materials and equipment for complete installation, seaming diagrams, and full carpet layouts for all areas per manufacturer's recommendation.
- All quantities to be verified by installer.
- All interior design submittals MUST be presented to [projecthub.hilton.com](http://projecthub.hilton.com) for review prior to implementation.

No printed material contained here-in may be reproduced without written permission of Tarkett Hospitality. Due to variations in monitors, printers and light sources, we cannot guarantee that the colors in this image will be an exact match to your colors. 285 Kraft Drive Dalton, GA 30721



8524



8526

# Revive Scheme

## GUEST ROOMS, WALL BASE



Issue Date: October 2019

Area Name: Guest Rooms

Item Number: B-01

Manufacturer: Tarkett

Address: 285 Kraft Drive  
Dalton, GA 30721

Phone: 706.277.3000

Contact: Jackie Passaro

E-mail: Jackie.Passaro@tarkett.com

Web: www.tarketta.com

Description: Millworks Profile Wall Base

Product: Mandalay MW-55H

Color/Finish: 55 Silver Grey

Size/Dimension: 4.5"H x .375"D

Material: Proprietary thermoplastic rubber formulation by manufacturer

### Notes:

Unless Using A Specified Manufacturer, The Following Required Item(s) for Approval Prior to Fabrication: Finish Sample

### Instructions:

- Must be of contract quality and suitable for commercial use.
- Installer to follow all manufacturer's installation guidelines for surface preparation and installation.
- Contractor to verify all sizes, quantities, and trim pieces required.
- Contractor to install with a 45 degree miter on all corners.
- All interpretations of the specification MUST be submitted to Hilton Design Review ([projecthub.hilton.com](http://projecthub.hilton.com)) for final approval prior to purchasing or implementation of any material.

No printed material contained here-in may be reproduced without written permission of Tarkett Hospitality. Due to variations in monitors, printers and light sources, we cannot guarantee that the colors in this image will be an exact match to your colors. 285 Kraft Drive Dalton, GA 30721



Mandalay  
4.5" MW-XX-H



55 Silver Grey WG

# Bloom Scheme

PUBLIC AREAS, WALL BASE



Issue Date: October 2019  
Area Name: Public Areas- Fitness Center  
Item Number: B-06

Manufacturer: Tarkett  
Address: 285 Kraft Drive  
Dalton, GA 30721  
Phone: 706.277.3000  
Contact: Jackie Passaro  
E-mail: Jackie.Passaro@tarkett.com  
Web: www.tarkettna.com

Description: Millworks Profile Wall Base  
Product: Mandalay MW-29-H6  
Item Number: B-06  
Color/Finish: 29 Moon Rock  
Size/Dimension: 6"H x .375"D  
Material: Proprietary thermoplastic rubber formulation by manufacturer

**Notes:**

Unless Using A Specified Manufacturer, The Following Required Item(s) for Approval Prior to Fabrication: Finish Sample

**Instructions:**

- Must be of contract quality and suitable for commercial use.
- Installer to follow all manufacturer's installation guidelines for surface preparation and installation.
- Contractor to verify all sizes, quantities, and trim pieces required.
- Contractor to install with a 45 degree miter on all corners.
- All interpretations of the specification MUST be submitted to Hilton Design Review (projecthub.hilton.com) for final approval prior to purchasing or implementation of any material.

No printed material contained here-in may be reproduced without written permission of Tarkett Hospitality. Due to variations in monitors, printers and light sources, we cannot guarantee that the colors in this image will be an exact match to your colors. 285 Kraft Drive Dalton, GA 30721



U.S. Patent No. D493,895

Mandalay  
6" MW-XX-H



29 Moon Rock WG