

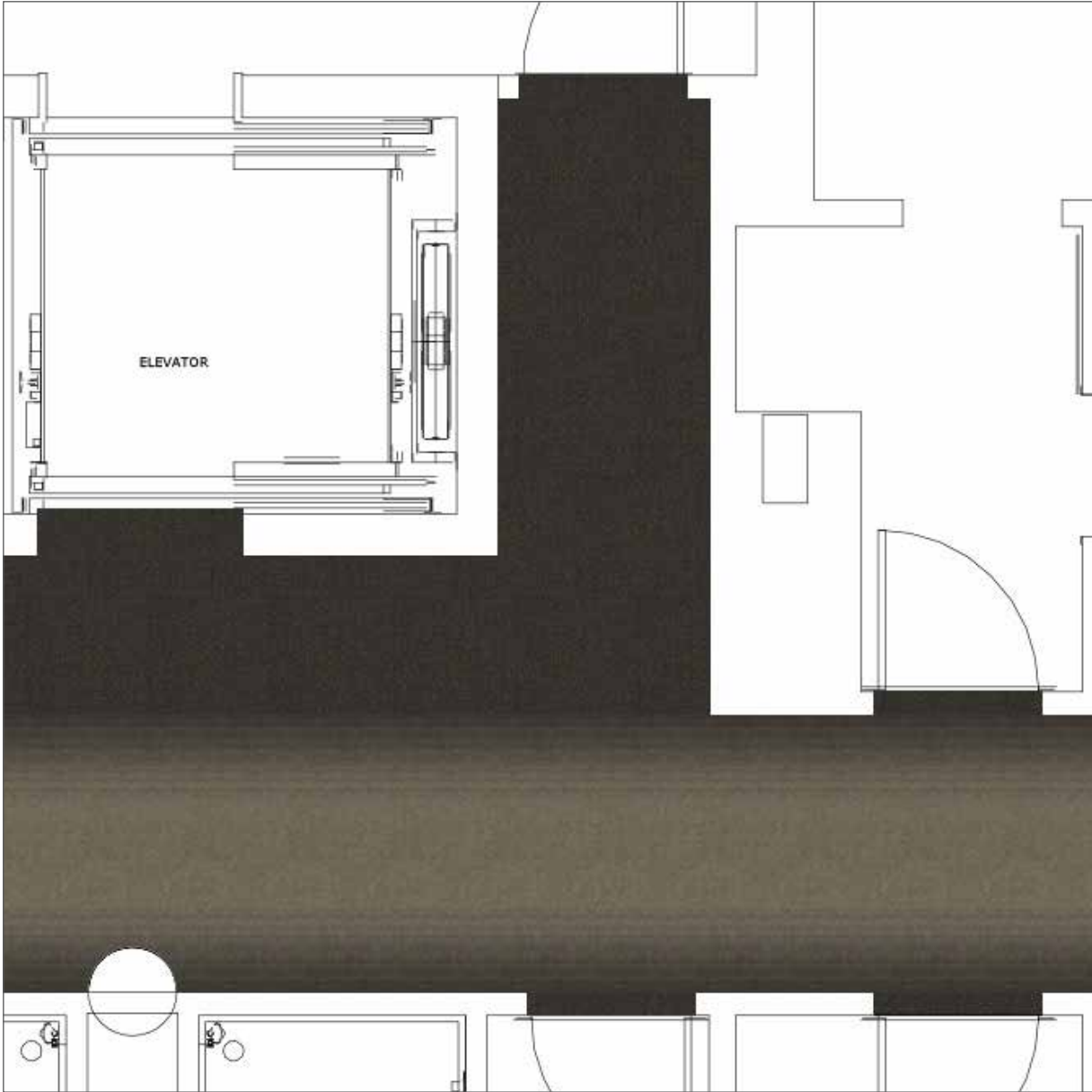
BARCELONA SCHEME

GUESTROOM CORRIDORS (TYPE A)



BARCELONA SCHEME

GUESTROOM CORRIDORS FLOOR PLAN (TYPE A)

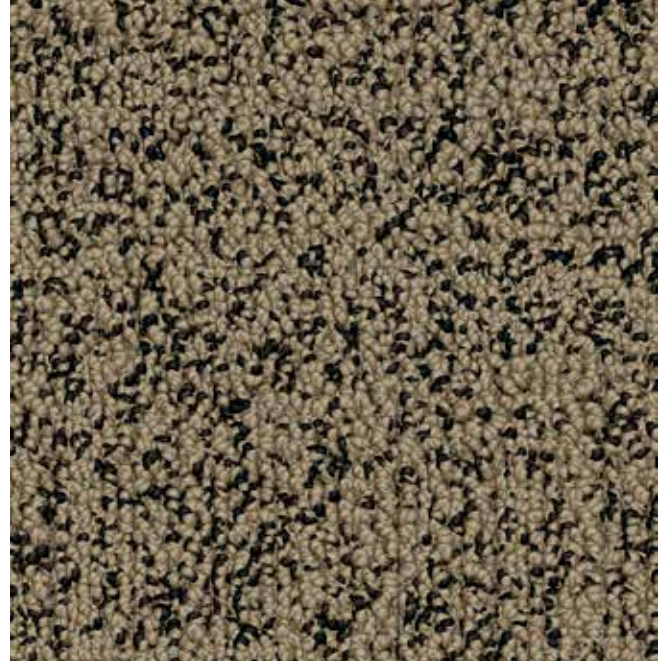


BARCELONA SCHEME

GUESTROOM CORRIDORS (TYPE A)



Area Name:	Corridor
Manufacturer:	Tarkett
Address:	285 Kraft Drive Dalton, GA 30721
Phone:	706.277.3000
Contact:	Jackie Passaro
E-mail:	Jackie.Passaro@tarkett.com
Web:	www.tarketthospitality.com
Pattern Number:	1022238-007 (Alternate #: A0019-88685)
Thread-Up:	AB
Scheme:	Type A (Solid Light)
Modular Tile Size:	24" x 24"
Type:	Tufted Pattern Loop
Content:	TDX Nylon
Weight:	25 oz. tufted face weight
Primary Backing:	Synthetic Non-Woven
Pile Height:	.219" average pile thickness
Gauge:	1/10"
Stitches Per Sq Inch:	7.5
Dye Method:	Solution Dyed
Installation Method:	Vertical Ashlar
Flame Requirements:	Meets or exceeds requirement Class 1 ASTM



Notes:

Manufacturer to confirm the carpet meets Marriott Design and Construction standards as noted in section 2514.03.

Instructions:

- Installer to provide all materials and equipment for complete installation, seaming diagrams, and full carpet layouts for all areas per manufacturer's recommendation.
- All quantities to be verified by installer.
- All materials and methods of construction must comply with all local fire and life safety codes for use in hotels and other public spaces, and Marriott Brand Standards.

No printed material contained here-in may be reproduced without written permission of Tarkett Hospitality. Due to variations in monitors, printers and light sources, we cannot guarantee that the colors in this image will be an exact match to your colors. 285 Kraft Drive Dalton, GA 30721

BARCELONA SCHEME

GUESTROOM CORRIDORS (TYPE B)



Area Name: Corridor

Manufacturer: Tarkett
Address: 285 Kraft Drive
Dalton, GA 30721
Phone: 706.277.3000
Contact: Jackie Passaro
E-mail: Jackie.Passaro@tarkett.com
Web: www.tarketthospitality.com

Pattern Number: 1022238-010 (Alternate #: A0022-88742)
Thread-Up: ABCDEFGH
Scheme: Type B (Gradient)
Modular Tile Size: 24" x 24"
Type: Tufted Pattern Loop
Content: TDX Nylon
Weight: 25 oz. tufted face weight
Primary Backing: Synthetic Non-Woven
Pile Height: .219" average pile thickness
Gauge: 1/10"
Stitches Per Sq Inch: 7.5
Dye Method: Solution Dyed
Installation Method: Vertical Ashlar
Flame Requirements: Meets or exceeds requirement Class 1 ASTM



Notes:

Manufacturer to confirm the carpet meets Marriott Design and Construction standards as noted in section 2514.03.

Instructions:

- Installer to provide all materials and equipment for complete installation, seaming diagrams, and full carpet layouts for all areas per manufacturer's recommendation.
- All quantities to be verified by installer.
- All materials and methods of construction must comply with all local fire and life safety codes for use in hotels and other public spaces, and Marriott Brand Standards.

No printed material contained here-in may be reproduced without written permission of Tarkett Hospitality. Due to variations in monitors, printers and light sources, we cannot guarantee that the colors in this image will be an exact match to your colors. 285 Kraft Drive Dalton, GA 30721

BARCELONA SCHEME

GUESTROOM CORRIDORS (TYPE C)



Area Name: Corridor

Manufacturer: Tarkett
Address: 285 Kraft Drive
Dalton, GA 30721
Phone: 706.277.3000
Contact: Jackie Passaro
E-mail: Jackie.Passaro@tarkett.com
Web: www.tarketthospitality.com

Pattern Number: 1022238-008 (A0019-88946)
Thread-Up: AB
Scheme: Type C (Solid Dark)
Modular Tile Size: 24" x 24"
Type: Tufted Pattern Loop
Content: TDX Nylon
Weight: 25 oz. tufted face weight
Primary Backing: Synthetic Non-Woven
Pile Height: .219" average pile thickness
Gauge: 1/10"
Stitches Per Sq Inch: 7.5
Dye Method: Solution Dyed
Installation Method: Vertical Ashlar
Flame Requirements: Meets or exceeds requirement Class 1 ASTM



Notes:

Manufacturer to confirm the carpet meets Marriott Design and Construction standards as noted in section 2514.03.

Instructions:

- Installer to provide all materials and equipment for complete installation, seaming diagrams, and full carpet layouts for all areas per manufacturer's recommendation.
- All quantities to be verified by installer.
- All materials and methods of construction must comply with all local fire and life safety codes for use in hotels and other public spaces, and Marriott Brand Standards.

No printed material contained here-in may be reproduced without written permission of Tarkett Hospitality. Due to variations in monitors, printers and light sources, we cannot guarantee that the colors in this image will be an exact match to your colors. 285 Kraft Drive Dalton, GA 30721

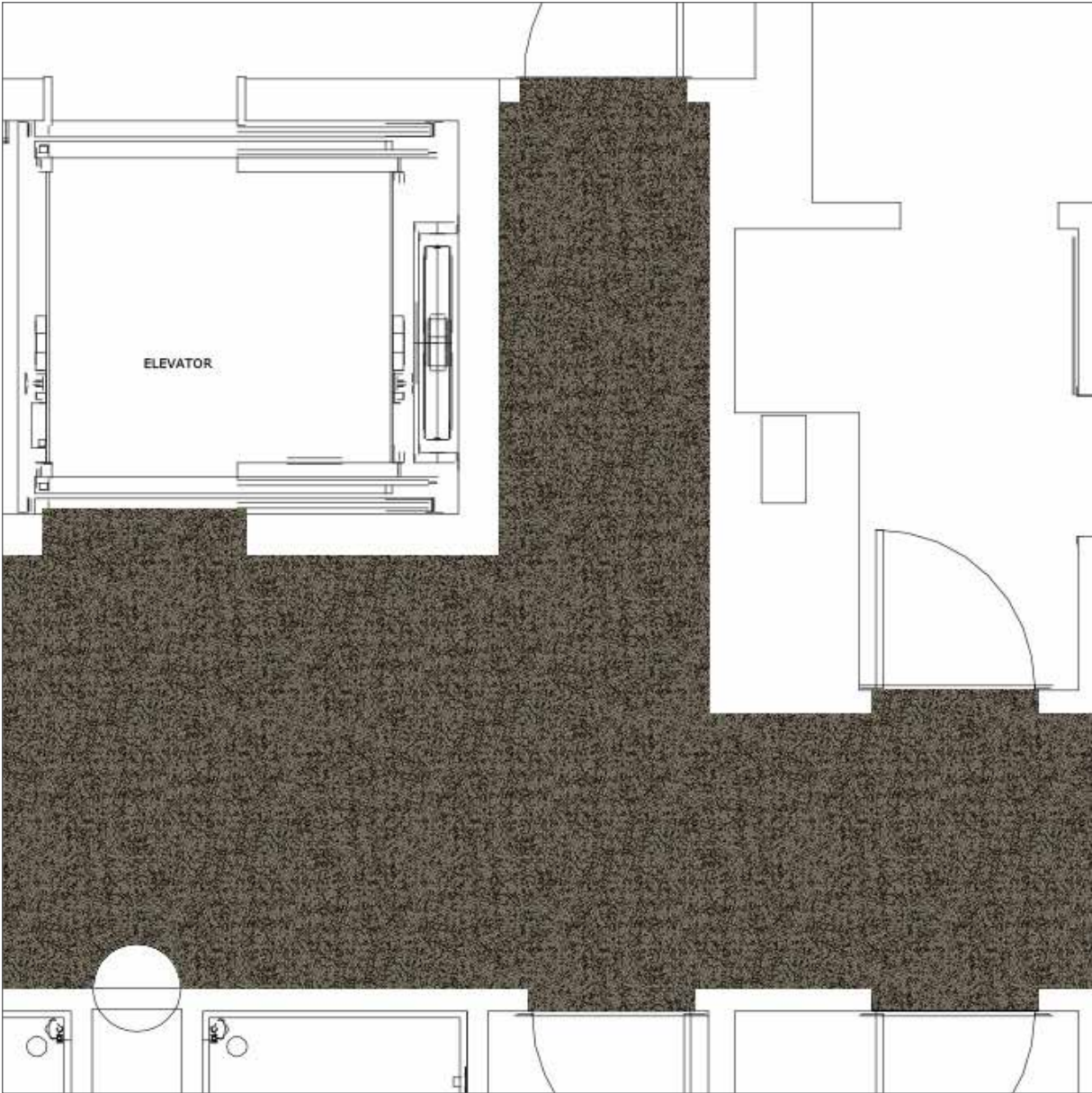
OSCURA SCHEME

GUESTROOM CORRIDOR



OSCURA SCHEME

GUESTROOM CORRIDOR FLOOR PLAN



OSCURA SCHEME

GUESTROOM CORRIDOR



Area Name: Corridor

Manufacturer: Tarkett
Address: 285 Kraft Drive
Dalton, GA 30721
Phone: 706.277.3000
Contact: Jackie Passaro
E-mail: Jackie.Passaro@tarkett.com
Web: www.tarketthospitality.com

Pattern Number: 1022238-016 (Alternate #: A0019-88942)
Thread-Up: AB
Scheme: Oscura
Modular Tile Size: 24" x 24"
Type: Tufted Pattern Loop
Content: TDX Nylon
Weight: 25 oz. tufted face weight
Primary Backing: Synthetic Non-Woven
Pile Height: .234" average pile thickness
Gauge: 1/10"
Stitches Per Sq Inch: 9.5
Dye Method: Solution Dyed
Installation Method: Quarter Turn
Flame Requirements: Meets or exceeds requirement Class 1 ASTM



Notes:

Manufacturer to confirm the carpet meets Marriott Design and Construction standards as noted in section 2514.03.

Instructions:

- Installer to provide all materials and equipment for complete installation, seaming diagrams, and full carpet layouts for all areas per manufacturer's recommendation.
- All quantities to be verified by installer.
- All materials and methods of construction must comply with all local fire and life safety codes for use in hotels and other public spaces, and Marriott Brand Standards.

No printed material contained here-in may be reproduced without written permission of Tarkett Hospitality. Due to variations in monitors, printers and light sources, we cannot guarantee that the colors in this image will be an exact match to your colors. 285 Kraft Drive Dalton, GA 30721