

HILTON

HOME2 . Dynamic Scheme



 **Tarkett Hospitality**

Manufacturer: Tarkett Hospitality
Address: 285 Kraft Drive
Dalton, GA 30721

Phone: 800.871.3211
Contact: HiltonOrders@tarkett.com
Web: www.tarketthospitality.com

Hilton Home2 - Dynamic Scheme

Guestroom Main Tile

(B) CPT-01

Product Information

Style Number/Color	B0317 / c. 846
Product Type	Dynamics Tile
Construction	Multi-Level Pattern Loop/
Fiber	Cut Lextron Enviro-Green
Dye Method	Nylon 100 % Solution Dyed
Primary Backing	Woven PET
Secondary Backing	Flex-Aire Modular® Cushion

Specifications

Size	9 in. x 36 in. Tile
Gauge	1/10
Stitches per Inch	9
Tufted Weight	22 oz per sq/yd
Total Weight Finished	120 oz
Pile Thickness	.219" Approx.
Total Thickness	.438" Approx.
Suggested Install	Vertical Ashlar

Performance

Traffic Class	Heavy
(TARR) Pill Test	Pass
Radiant Panel	Class I
Flammability	ASTM E 648 Class I
Smoke Density	ASTM E 662 Less than 450
LEED Info	Green Label Plus Certified - GLP8320

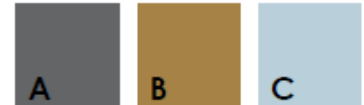
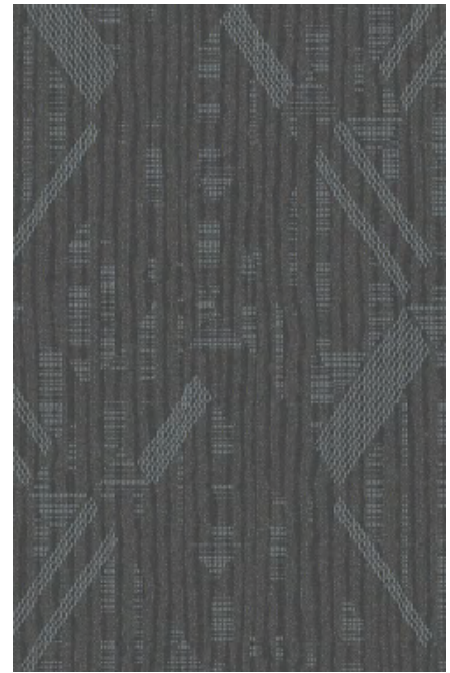
Warranty 10 Year Limited Warranty

Enviro-Green yarn has 10% pre-consumer recycled content.
Recommended for heavy carpet traffic levels.

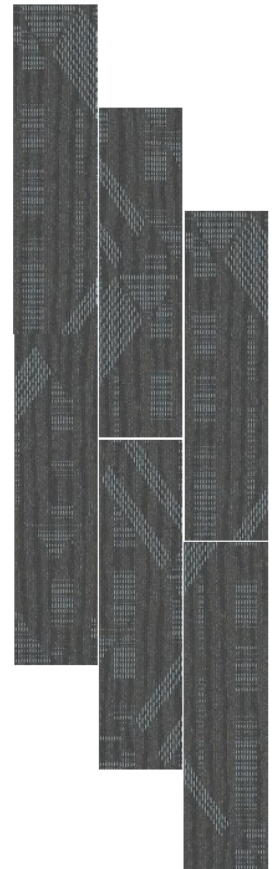
Carpet should be installed in accordance with the Carpet and Rug Institute's standard CRI-104 CRI-105. Pattern streaks and banding are visually apparent streaking in patterned carpet resulting from linear juxtaposition of pattern elements visible in both length and width direction. IT IS NOT A CARPET DEFECT, but is inherent in solution dyed graphic and cut/loop patterns.

Product Notes

- Specifications are subject to nominal manufacturing variances. Material supply and/or manufacturing processes may necessitate changes without notice. Colors may vary slightly from dye lot to dye lot.
- U.S. Patent numbers: 4,849,267; 6,406,574, US 9,988,760 B2
- Chair pads are recommended for optimum textural performance. Absent the use of chair pads, more intensive maintenance will be required for areas in direct contact with chair caster traffic, and some degree of appearance change is to be expected.



Install: 1/3 Vertical Ashlar



9" X 36" RANDOM CUT TILE

Hilton Home2 - Dynamic Scheme
Guestroom Accent Tile
(B) CPT-02

Product Information

Style Number/Color	B0315 / c. 846
Product Type	Dynamics Tile
Construction	Multi-Level Pattern Loop/Cut
Fiber	Lextron Enviro-Green Nylon
Dye Method	100 % Solution Dyed
Primary Backing	Woven PET
Secondary Backing	Flex-Aire Modular® Cushion

Specifications

Size	9 in. x 36 in. Tile
Gauge	1/10
Stitches per Inch	9
Tufted Weight	22 oz per sq/yd
Total Weight Finished	120 oz
Pile Thickness	.219" Approx.
Total Thickness	.438" Approx.
Suggested Install	Vertical Ashlar

Performance

Traffic Class	Heavy
(TARR) Pill Test	Pass
Radiant Panel	Class I
Flammability	ASTM E 648 Class I
Smoke Density	ASTM E 662 Less than 450
LEED Info	Green Label Plus Certified - GLP8320

Warranty **10 Year Limited Warranty**

Enviro-Green yarn has 10% pre-consumer recycled content.
 Recommended for heavy carpet traffic levels.

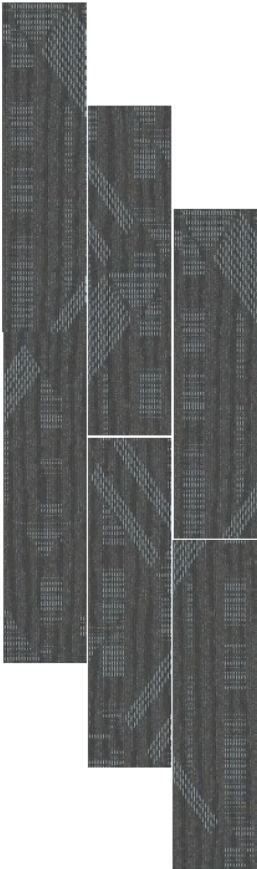
Carpet should be installed in accordance with the Carpet and Rug Institute’s standard CRI-104 CRI-105. Pattern streaks and banding are visually apparent streaking in patterned carpet resulting from linear juxtaposition of pattern elements visible in both length and width direction. IT IS NOT A CARPET DEFECT, but is inherent in solution dyed graphic and cut/loop patterns.

Product Notes

1. Specifications are subject to nominal manufacturing variances. Material supply and/or manufacturing processes may necessitate changes without notice. Colors may vary slightly from dye lot to dye lot.
2. U.S. Patent numbers: 4,849,267; 6,406,574, US 9,988,760 B2
3. Chair pads are recommended for optimum textural performance. Absent the use of chair pads, more intensive maintenance will be required for areas in direct contact with chair caster traffic, and some degree of appearance change is to be expected.



Install: 1/3 Vertical Ashlar



9" X 36" RANDOM CUT TILE

Hilton Home2 - Dynamic Scheme

Guestroom Carpet Base

(B) CP-01.1

Product Information

Style Number/Color	728S c. 8529
Product Type	Carpet Cove Base
Construction	CPG - Cut Pile Graphics
Fiber	Lextron Enviro-Green Nylon
Dye Method	100 % Solution Dyed
Primary Backing	Woven Polypropylene
Secondary Backing	Action Bac



Specifications

Gauge	1/10
Stitches per Inch	9
Tufted Weight	26 oz per sq/yd
Total Weight Finished	64 oz
Pile Thickness	.250 in.
Width	12 ft.
Suggested Install	Glue per Manufacturer's Recommendation

Performance

Traffic Class	Recommended for Cove Base only
Radiant Panel	Class I
Smoke Density	ASTM E 662 Less than 450
Pattern Repeat	025"W x 025"L

Warranty	10 Year Wear Guarantee
-----------------	-------------------------------

Enviro-Green yarn has 10% pre-consumer recycled content.
Recommended for Cove Base only

Carpet should be installed in accordance with the Carpet and Rug Institute's standard CRI-104 CRI-105. Pattern streaks and banding are visually apparent streaking in patterned carpet resulting from linear juxtaposition of pattern elements visible in both length and width direction. IT IS NOT A CARPET DEFECT, but is inherent in solution dyed graphic and cut/loop patterns.

Product Notes

1. Specifications are subject to nominal manufacturing variances. Material supply and/or manufacturing processes may necessitate changes without notice. Colors may vary slightly from dye lot to dye lot.
2. U.S. Patent numbers: 4,849,267; 6,406,574, US 9,988,760 B2
3. Chair pads are recommended for optimum textural performance. Absent the use of chair pads, more intensive maintenance will be required for areas in direct contact with chair caster traffic, and some degree of appearance change is to be expected.

Hilton Home2 - Dynamic Scheme

Corridor, TV Lounge, Meeting Tile

(B) CPT-10

Product Information

Style Number/Color	B0313 / c. 684
Product Type	Dynamics Tile
Construction	Multi-Level Pattern Loop/Cut
Fiber	Lextron Enviro-Green Nylon
Dye Method	100 % Solution Dyed
Primary Backing	Woven PET
Secondary Backing	Flex-Aire Modular® Cushion

Specifications

Size	24 in. x 24 in. Tile
Gauge	1/10
Stitches per Inch	9
Tufted Weight	22 oz per sq/yd
Total Weight Finished	120 oz
Pile Thickness	.219" Approx.
Total Thickness	.438" Approx.
Suggested Install	Vertical Ashlar/Quarter Turn

Performance

Traffic Class	Heavy
(TARR) Pill Test	Pass
Radiant Panel	Class I
Flammability	ASTM E 648 Class I
Smoke Density	ASTM E 662 Less than 450
LEED Info	Green Label Plus Certified - GLP8320

Warranty 10 Year Limited Warranty

Enviro-Green yarn has 10% pre-consumer recycled content.
 Recommended for heavy carpet traffic levels.

Carpet should be installed in accordance with the Carpet and Rug Institute's standard CRI-104 CRI-105. Pattern streaks and banding are visually apparent streaking in patterned carpet resulting from linear juxtaposition of pattern elements visible in both length and width direction. IT IS NOT A CARPET DEFECT, but is inherent in solution dyed graphic and cut/loop patterns.

Product Notes

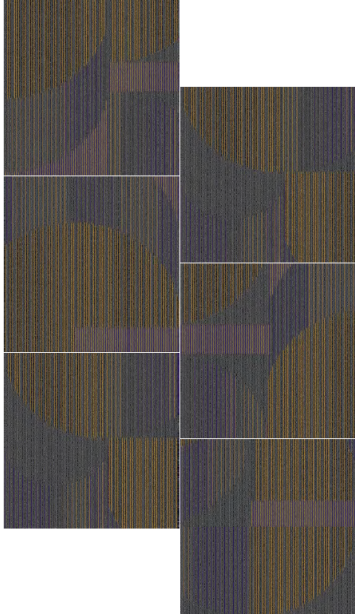
1. Specifications are subject to nominal manufacturing variances. Material supply and/or manufacturing processes may necessitate changes without notice. Colors may vary slightly from dye lot to dye lot.
2. U.S. Patent numbers: 4,849,267; 6,406,574, US 9,988,760 B2
3. Chair pads are recommended for optimum textural performance. Absent the use of chair pads, more intensive maintenance will be required for areas in direct contact with chair caster traffic, and some degree of appearance change is to be expected.



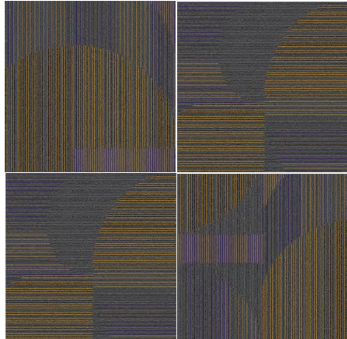
24 in. X 24 in. Random Cut Tile



INSTALL: VERTICAL ASHLAR



INSTALL; QUARTER TURN



Hilton Home2 - Dynamic Scheme

Carpet Base @ Corridor, TV Lounge, and Meeting Room (B) CP-10.1

Product Information

Style Number/Color	728S c. 8529
Product Type	Carpet Cove Base
Construction	CPG - Cut Pile Graphics
Fiber	Lextron Enviro-Green Nylon
Dye Method	100 % Solution Dyed
Primary Backing	Woven Polypropylene
Secondary Backing	Action Bac



Specifications

Gauge	1/10
Stitches per Inch	9
Tufted Weight	26 oz per sq/yd
Total Weight Finished	64 oz
Pile Thickness	.250 in.
Width	12 ft.
Suggested Install	Glue per Manufacturer's Recommendation

Performance

Traffic Class	Recommended for Cove Base only
Radiant Panel	Class I
Smoke Density	ASTM E 662 Less than 450
Pattern Repeatat	025"W x 025"L

Warranty	10 Year Wear Guarantee
-----------------	-------------------------------

Enviro-Green yarn has 10% pre-consumer recycled content.
Recommended for Cove Base only

Carpet should be installed in accordance with the Carpet and Rug Institute's standard
CRI-104/CRI-105.

Pattern streaks and banding are visually apparent streaking in patterned carpet resulting from
linear juxtaposition of pattern elements visible in both length and width direction.

IT IS NOT A CARPET DEFECT, but is inherent in solution dyed graphic and cut/loop patterns.

Product Notes

1. Specifications are subject to nominal manufacturing variances. Material supply and/or manufacturing processes may necessitate changes without notice.
Colors may vary slightly from dye lot to dye lot.
2. U.S. Patent numbers: 4,849,267; 6,406,574, US 9,988,760 B2
3. Chair pads are recommended for optimum textural performance. Absent the use of chair pads, more intensive maintenance will be required for areas in direct contact with chair caster traffic, and some degree of appearance change is to be expected.

Hilton Home2 - Dynamic Scheme

Lobby Tile

(B) CPT-11

Product Information

Style Number/Color	B0303 / c. 945
Product Type	Dynamics Tile
Construction	Multi-Level Pattern Loop/Cut
Fiber	Lextron Enviro-Green Nylon
Dye Method	100 % Solution Dyed
Primary Backing	Woven PET
Secondary Backing	Flex-Aire Modular® Cushion

Specifications

Size	24 in. x 24 in. Tile
Gauge	1/10
Stitches per Inch	9
Tufted Weight	22 oz per sq/yd
Total Weight Finished	120 oz
Pile Thickness	.219" Approx.
Total Thickness	.438" Approx.
Suggested Install	Vertical Ashlar/Quarter Turn

Performance

Traffic Class	Heavy
(TARR) Pill Test	Pass
Radiant Panel	Class I
Flammability	ASTM E 648 Class I
Smoke Density	ASTM E 662 Less than 450
LEED Info	Green Label Plus Certified - GLP8320

Warranty **10 Year Limited Warranty**

Enviro-Green yarn has 10% pre-consumer recycled content.
Recommended for heavy carpet traffic levels.

Carpet should be installed in accordance with the Carpet and Rug Institute's standard
CRI-104/CRI-105.

Pattern streaks and banding are visually apparent streaking in patterned carpet resulting from
linear juxtaposition of pattern elements visible in both length and width direction.

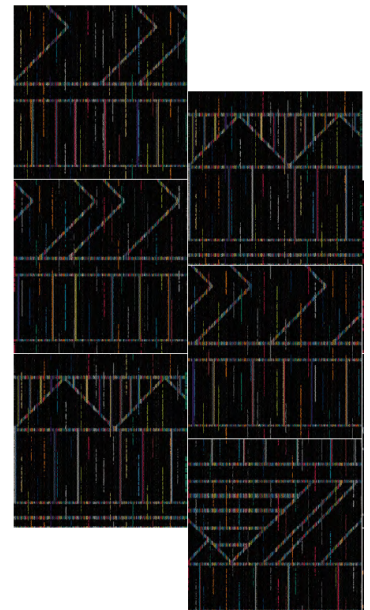
IT IS NOT A CARPET DEFECT, but is inherent in solution dyed graphic and cut/loop patterns.
and cut/loop patterns.

Product Notes

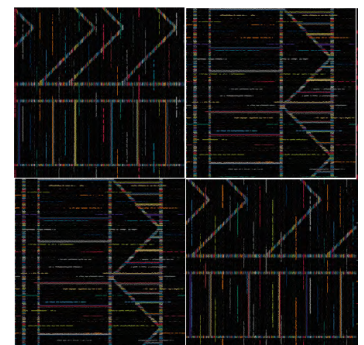
1. Specifications are subject to nominal manufacturing variances. Material supply and/or manufacturing processes may necessitate changes without notice.
Colors may vary slightly from dye lot to dye lot.
2. U.S. Patent numbers: 4,849,267; 6,406,574, US 9,988,760 B2
3. Chair pads are recommended for optimum textural performance. Absent the use of chair pads, more intensive maintenance will be required for areas in direct contact with chair caster traffic, and some degree of appearance change is to be expected.



INSTALL: VERTICAL ASHLAR



INSTALL; QUARTER TURN



Hilton Home 2 Dynamic

Stairwell Broadloom

(B) CPT-12

Product Information

Style Number/Color	B0302 / c. 228
Product Type	Dynamics Broadloom
Construction	Multi-Level Pattern Cut/Loop
Fiber	CF Lextron Enviro-Green Nylon
Dye Method	100 % Solution Dyed
Primary Backing	Woven Polypropylene
Secondary Backing	Actionbac

Specifications

Size	12 ft. Width
Gauge	1/10
Stitches per Inch	10
Tufted Weight	32 oz per sq/yd
Total Weight Finished	68 oz per syd
Pile Thickness	.343 in. Approx.
Total Thickness	.406 in. Approx.
Pattern Repeat	72 in. x 63 in.

Performance

Traffic Class (TARR)	Moderate
Pill Test	Pass
Radiant Panel	Class I
Flammability	ASTM E 648 Class I
Smoke Density	ASTM E 662 Less than 450
LEED Info	Green Label Plus Certified - GLP2380

Warranty

10 Year Limited Warranty

Enviro-Green yarn has 10% pre-consumer recycled content.
Recommended for heavy (public space) carpet traffic levels.

Carpet should be installed in accordance with the Carpet and Rug Institute's standard CRI-104/CRI-105.
Pattern streaks and banding are visually apparent streaking in patterned carpet resulting from linear juxtaposition of pattern elements visible in both length and width direction.
IT IS NOT A CARPET DEFECT, but is inherent in solution dyed graphic and cut/loop patterns.

Pattern streaks and banding are visually apparent streaking in patterned carpet resulting from linear juxtaposition of pattern elements visible in both length and width direction.
IT IS NOT A CARPET DEFECT, but is inherent in solution dyed graphic and cut/loop patterns.

All Specifications subject to normal manufacturing tolerance.



Hilton Home2 - Dynamic Scheme

BOH Office Tile

(B) CPT-12ALT

Product Information

Style Number/Color	B0301 / c. 228
Product Type	Dynamics Tile
Construction	Multi-Level Pattern Loop/Cut
Fiber	Lextron Enviro-Green Nylon
Dye Method	100 % Solution Dyed
Primary Backing	Woven PET
Secondary Backing	Flex-Aire Modular® Cushion

Specifications

Size	24 in. x 24 in. Tile
Gauge	1/10
Stitches per Inch	9
Tufted Weight	22 oz per sq/yd
Total Weight Finished	120 oz
Pile Thickness	.219" Approx.
Total Thickness	.438" Approx.
Suggested Install	Vertical Ashlar/Quarter Turn

Performance

Traffic Class	Heavy
(TARR) Pill Test	Pass
Radiant Panel	Class I
Flammability	ASTM E 648 Class I
Smoke Density	ASTM E 662 Less than 450
LEED Info	Green Label Plus Certified - GLP8320

Warranty	10 Year Limited Warranty
-----------------	---------------------------------

Enviro-Green yarn has 10% pre-consumer recycled content.
Recommended for heavy carpet traffic levels.

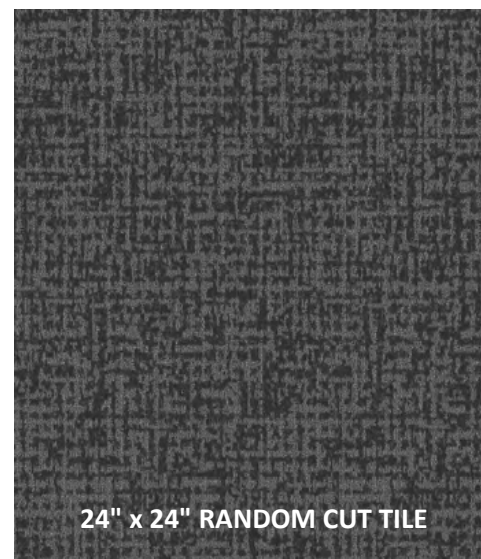
Carpet should be installed in accordance with the Carpet and Rug Institute's standard CRI-104/
CRI-105.

Pattern streaks and banding are visually apparent streaking in patterned carpet resulting from
linear juxtaposition of pattern elements visible in both length and width direction.

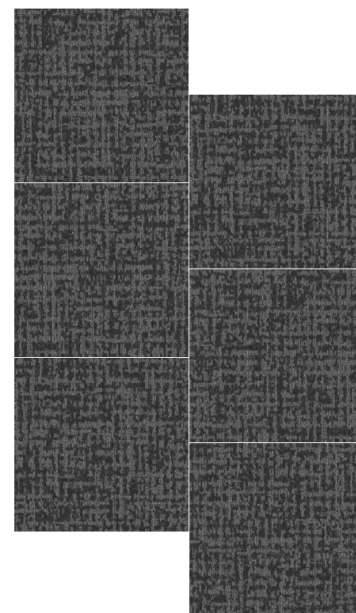
IT IS NOT A CARPET DEFECT, but is inherent in solution dyed graphic and cut/loop patterns.

Product Notes

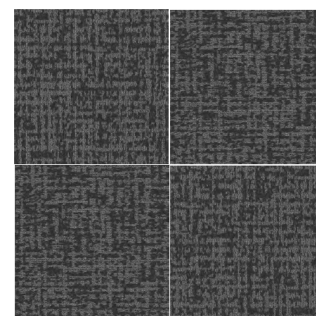
1. Specifications are subject to nominal manufacturing variances. Material supply and/or manufacturing processes may necessitate changes without notice.
Colors may vary slightly from dye lot to dye lot.
2. U.S. Patent numbers: 4,849,267; 6,406,574, US 9,988,760 B2
3. Chair pads are recommended for optimum textural performance. Absent the use of chair pads, more intensive maintenance will be required for areas in direct contact with chair caster traffic, and some degree of appearance change is to be expected.



INSTALL: VERTICAL ASHLAR



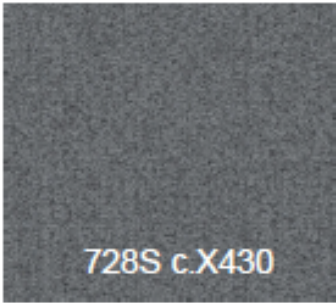
INSTALL; QUARTER TURN



Hilton Home2 - Dynamic Scheme
Carpet Base @ BOH Offices, Stairwell
(B) CP-12.1

Product Information

Style Number/Color	728S c. X430
Product Type	Carpet Cove Base
Construction	CPG - Cut Pile Graphics
Fiber	Lextron Enviro-Green Nylon
Dye Method	100 % Solution Dyed
Primary Backing	Woven Polypropylene
Secondary Backing	Action Bac



Specifications

Gauge	1/10
Stitches per Inch	9
Tufted Weight	26 oz per sq/yd
Total Weight Finished	64 oz
Pile Thickness	.250 in.
Width	12 ft.
Suggested Install	Glue per Manufacturer's Recommendation

Performance

Traffic Class	Recommended for Cove Base only
Radiant Panel	Class I
Smoke Density	ASTM E 662 Less than 450
Pattern Repeatat	025"W x 025"L

Warranty **10 Year Wear Guarantee**

Enviro-Green yarn has 10% pre-consumer recycled content.
Recommended for Cove Base only

Carpet should be installed in accordance with the Carpet and Rug Institute's standard
CRI-104/CRI-105.

Pattern streaks and banding are visually apparent streaking in patterned carpet resulting from
linear juxtaposition of pattern elements visible in both length and width direction.

IT IS NOT A CARPET DEFECT, but is inherent in solution dyed graphic and cut/loop patterns.

Product Notes

- 1. Specifications are subject to nominal manufacturing variances. Material supply and/or manufacturing processes may necessitate changes without notice.
Colors may vary slightly from dye lot to dye lot.
- 2. U.S. Patent numbers: 4,849,267; 6,406,574, US 9,988,760 B2
- 3. Chair pads are recommended for optimum textural performance. Absent the use of chair pads, more intensive maintenance will be required for areas in direct contact with chair caster traffic, and some degree of appearance change is to be expected.

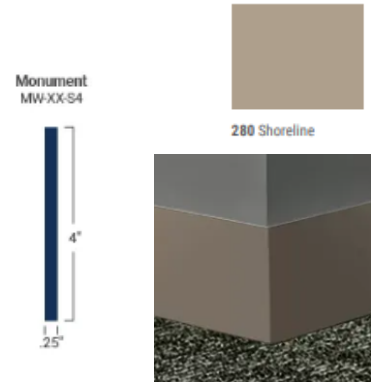
Hilton Home2 - Dynamic Scheme

Resilient Products

Product Information: Wall Base

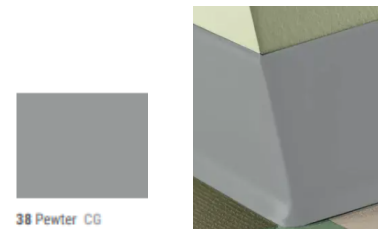
- Hilton Tag# (B) RB-01 Base @ ERT Guestroom
 (B) RB-10 Base @ Employee Breakroom
 (B) RB-11 Base @ Fitness

Style Number MW-280-S4
 Color 280 Shoreline
 Product Type Millwork Wall Base
 Size 4"H x .250"Thick x 8 ft.Lengths
 Carton Size 64 ft per carton



- Hilton Tag# (B) RB-12 Base @ Engineering & Housekeeping

Style Number CB-38
 Color 38 Pewter
 Product Type Traditional Vinyl Wall Base
 Size 4"H x 1/8"Thick x 120 ft.Coil
 Carton Size 120 ft per carton



Product Information: Vinyl Composition Tile

- Hilton Tag# (B) VCT-10 VCT @ Engineering

Style Number VCT II
 Color 557 Shooting Star
 Product Type Vinyl Composition Tile
 Size 12" x 12" x 1/8" Thick
 Carton Size 45 sq ft per carton (45 tiles/carton)



Product Information: ERT

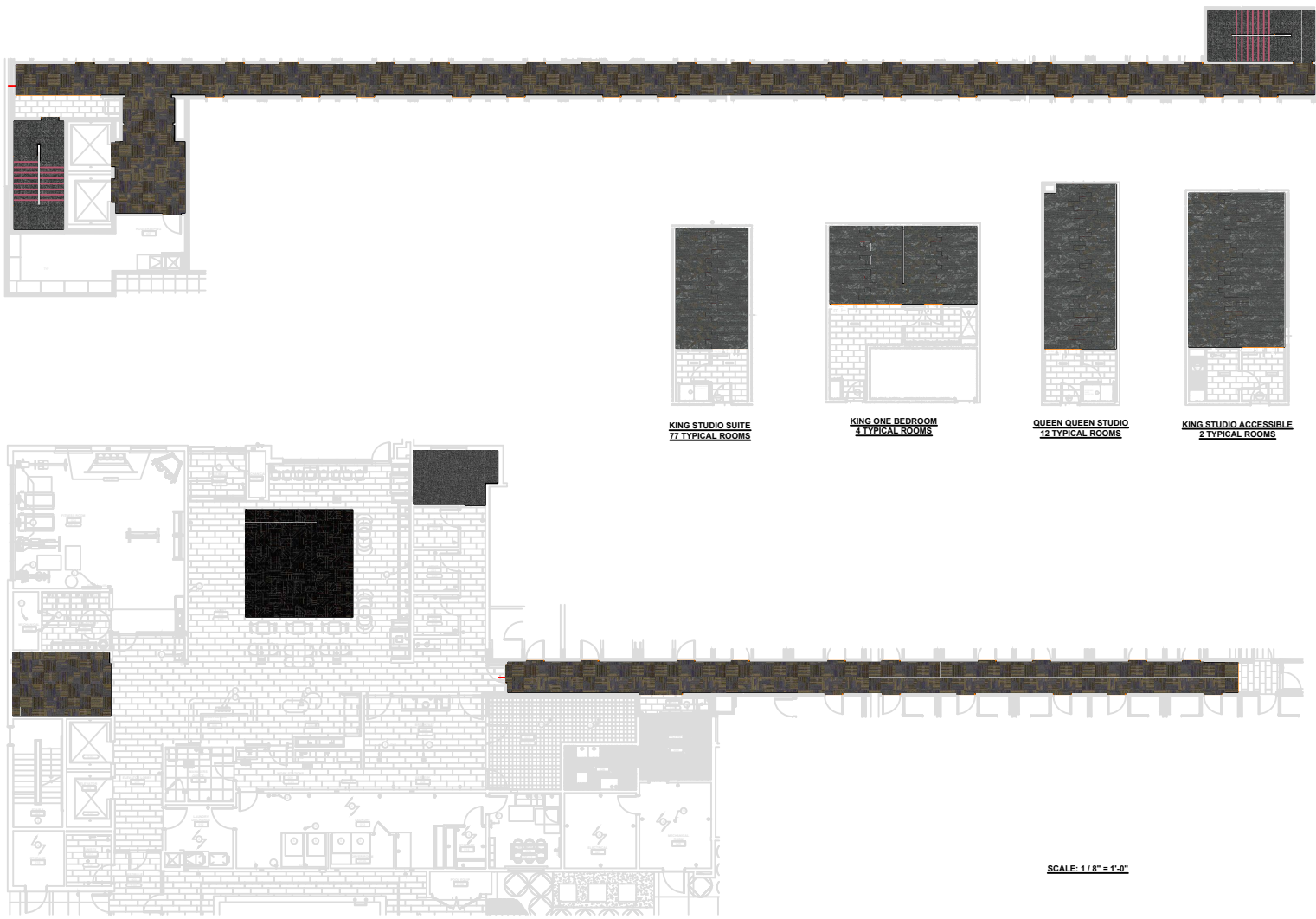
- Hilton Tag# (B) RF-11 ERT @ Employee Breakroom & Guestroom Alt

Style Number Accore
 Color Limed Oak 0017
 Product Type LVT/ERT - Enhanced Resilient Tile
 Size 7" W x 48" L
 Carton Size 23.64 sq ft per carton



Home 2 - Dynamic Scheme

Prototypical Flooded Plan



GENERAL NOTES

- 1) This drawing and designs contained therein are the sole property of Tarkett Hospitality Carpet Mills, Inc.
- 2) The red dashed lines indicate known seams. Due to roll sizes and unexpected conditions that may arise, adjustment seams may become necessary during installation. Locations of cross seams are approximate. Actual layout may vary based on roll sizes.
- 3) All contractors using this drawing will be responsible for verifying all dimensions and package requirements. Tarkett Hospitality Carpet Mills, Inc. will not be held responsible for final package requirements.
- 4) These drawings are used to show the interior design intent only and should not be used for construction purposes.

Seam Lines are indicated by red dashed lines.
This plan must be field verified for measurement accuracy.

Rev. #	Description	Date
R1	NO CHANGE THIS PAGE	08/29/23
R2	ONE BEDROOM SUITE LAYOUT	04/18/24
R3	ADJUST LAYOUT	05/14/24

Approved By:
 Date:



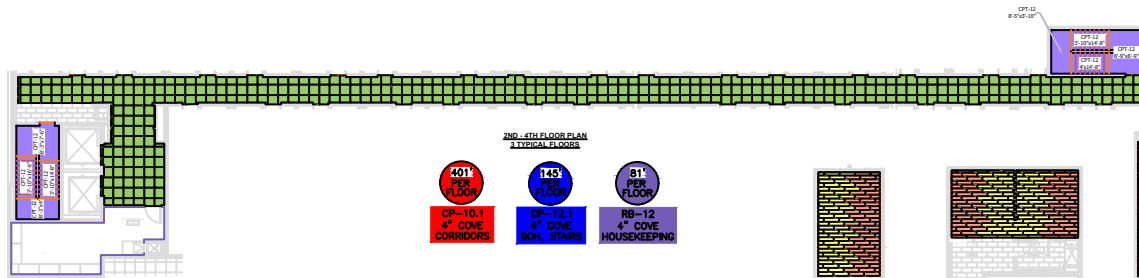
TARKETT HOSPITALITY
 285 KRAFT DRIVE
 DALTON, GA. 30721
 (800) 871-3211

Project Name and Address
 HOME2
 DYNAMIC SCHEME

Project	Sheet
08-K-03029	1 OF 1
Development	
N/A	
Drawn by: SUSAN JACKSON	1 OF 1
Date: 08/24/2023	
Scale: 1/8" = 1'-0"	

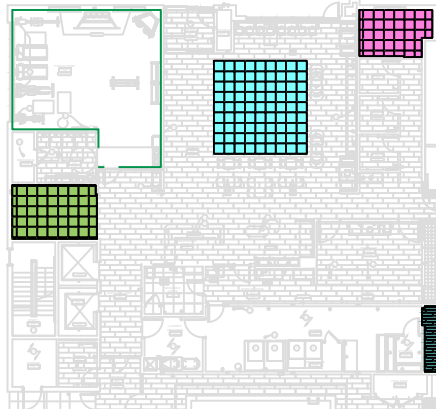
Home 2 - Dynamic Scheme

Prototypical Seaming Diagram

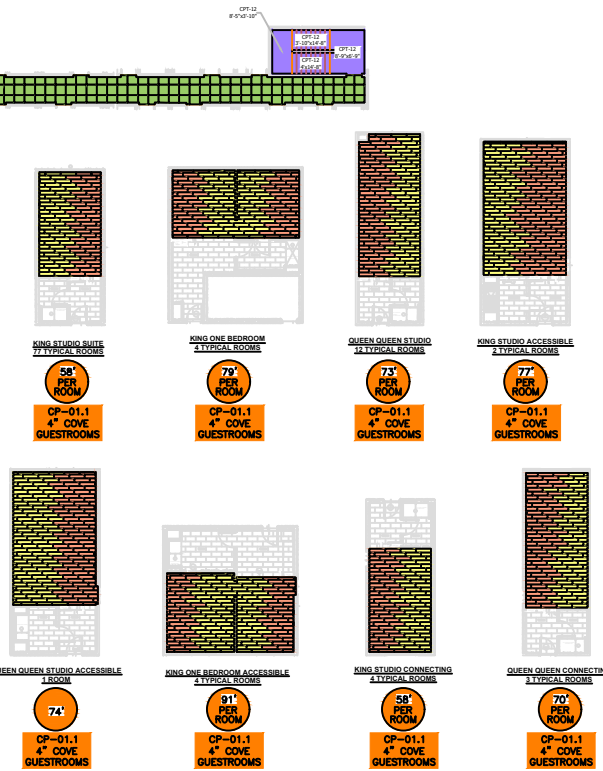
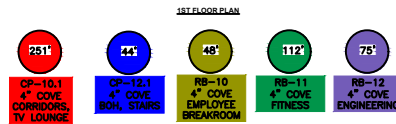


Carpet ID	Pattern / Shikord	Width	Repeat	Description
CP-01.1	7285 - 8529	12'-0"	N/A	4" COVE BASE - GUESTROOMS
CP-02.1	7285 - 8529	12'-0"	N/A	4" COVE BASE - CORRIDORS, TV LOUNGE
CP-02.1	7285 - X430	12'-0"	N/A	4" COVE BASE - BOH, STAIRS
CPT-01	B0317 - 846	0'-9" x 3'-0"	Tiles	GUESTROOM - MAIN
CPT-02	B0315 - 846	0'-9" x 3'-0"	Tiles	GUESTROOM - ACCENT
CPT-10	B0313 - 684	2'-0" x 2'-0"	Tiles	CORRIDORS, TV LOUNGE
CPT-11	B0303 - 945	2'-0" x 2'-0"	Tiles	LOBBY
CPT-12	B0302 - 228	12'-0"	72" WIDE X 63" RUNNING	STAIRWELLS
CPT-12A.7	B0301 - 228	2' x 2'	Tiles	BOH OFFICE
RB-01	MW-280-54 SHORELINE	4"	N/A	4" RESILIENT BASE - GUESTROOMS @ ERT
RB-10	MW-280-54 SHORELINE	4"	N/A	4" RESILIENT BASE - EMPLOYEE BREAKROOM
RB-11	MW-280-54 SHORELINE	4"	N/A	4" RESILIENT BASE - FITNESS
RB-12	CP-38 PEWTER	4"	N/A	4" RESILIENT BASE - ENGINEERING & HOUSEKEEPING
RF-11	ACCORE - LIME DAK	7' x 4'	Tiles	EMPLOYEE BREAKROOM & GUEST ALT
VE1-10	VCT II - 55' SHOOTING STAR CG	1' x 1'	Tiles	ENGINEERING

** RB-01 TO BE USED ONLY WHEN USING ERT-11 GUEST ALT IN PLACE OF CPT-01 & CPT-02



INSTALLER NOTE:
Guestroom tile layout is based on a third drop. Due to room dimensions, tile size, and estimating program limitations, some rooms show small slivers of tile at the walls. It is the installers responsibility to adjust tile length/placement to ensure these slivers are eliminated.



GENERAL NOTES

- 1) This drawing and designs contained therein are the sole property of Tarkett Hospitality Carpet Mills, Inc.
 - 2) The red dotted lines indicate known seams. Due to roll sizes and unexpected conditions that may arise, adjustment seams may become necessary during installation. Locations of cross seams are approximate. Actual layout may vary based on roll sizes.
 - 3) All contractors using this drawing will be responsible for verifying all dimensions and package requirements. Tarkett Hospitality Carpet Mills, Inc. will not be held responsible for final package requirements.
 - 4) These drawings are used to show the interior design intent only and should not be used for construction purposes.
- Seam Lines are indicated by red dashed lines.
This plan must be field verified for measurement accuracy.

Rev. #	Description	Date
R1	ADD RESILIENT PRODUCTS	8/9/23
R2	ONE BEDROOM SUITE LAYOUT	04/18/24
R3	ADJUST LAYOUT	05/16/24

Approved By: _____
Date: _____



TARKETT HOSPITALITY
285 KRAFT DRIVE
DALTON, GA. 30721
(800) 871-3211

Project Name and Address
**HOME2
DYNAMIC SCHEME**

Project	Sheet
BR-K-03029	1 OF 1
Development	
N/A	
Drawn by	SUSAN JACKSON
Date	08/24/2023
Scale	3/32" = 1'-0"

SCALE: 3/32" = 1'-0"