

# HILTON

## HOME2 . Vibrant Scheme



 **Tarkett Hospitality**

Manufacturer: Tarkett Hospitality  
Address: 285 Kraft Drive  
Dalton, GA 30721

Phone: 800.871.3211  
Contact: [HiltonOrders@tarkett.com](mailto:HiltonOrders@tarkett.com)  
Web: [www.tarketthospitality.com](http://www.tarketthospitality.com)

# Hilton Home2 - Vibrant Scheme

## Guestroom Main Tile

### (A) CPT-01

#### Product Information

Style Number/Color	<b>B0327 / c. 885</b>
Product Type	<b>Dynamics Tile</b>
Construction	<b>Multi-Level Pattern Loop/Cut</b>
Fiber	<b>Lextron Enviro-Green Nylon</b>
Dye Method	<b>100 % Solution Dyed Woven</b>
Primary Backing	<b>Woven PET</b>
Secondary Backing	<b>Flex-Aire Modular® Cushion</b>

#### Specifications

Size	<b>9 in. x 36 in. Tile</b>
Gauge	<b>1/10</b>
Stitches per Inch	<b>9</b>
Tufted Weight	<b>22 oz per sq/yd</b>
Total Weight Finished	<b>120 oz</b>
Pile Thickness	<b>.219" Approx.</b>
Total Thickness	<b>.438" Approx.</b>
Suggested Install	<b>Vertical Ashlar</b>

#### Performance

Traffic Class	<b>Heavy</b>
(TARR) Pill Test	<b>Pass</b>
Radiant Panel	<b>Class I</b>
Flammability	<b>ASTM E 648 Class I</b>
Smoke Density	<b>ASTM E 662 Less than 450</b>
LEED Info	<b>Green Label Plus Certified - GLP8320</b>

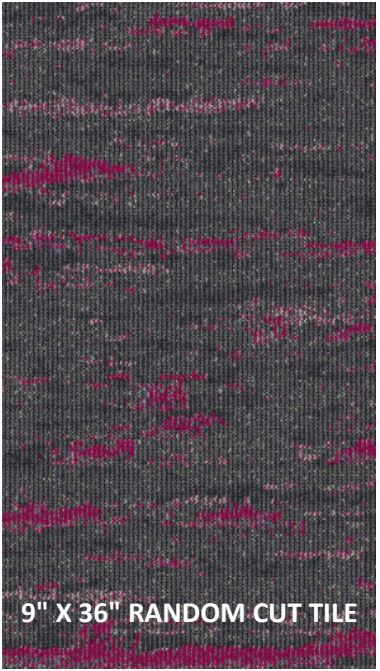
**Warranty** **10 Year Limited Warranty**

Enviro-Green yarn has 10% pre-consumer recycled content.  
Recommended for heavy carpet traffic levels.

Carpet should be installed in accordance with the Carpet and Rug Institute’s standard CRI-104 CRI-105. Pattern streaks and banding are visually apparent streaking in patterned carpet resulting from linear juxtaposition of pattern elements visible in both length and width direction. IT IS NOT A CARPET DEFECT, but is inherent in solution dyed graphic and cut/loop patterns.

Product Notes

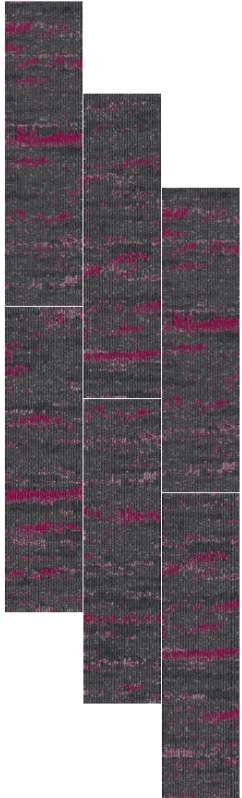
1. Specifications are subject to nominal manufacturing variances. Material supply and/or manufacturing processes may necessitate changes without notice. Colors may vary slightly from dye lot to dye lot.
2. U.S. Patent numbers: 4,849,267; 6,406,574, US 9,988,760 B2
3. Chair pads are recommended for optimum textural performance. Absent the use of chair pads, more intensive maintenance will be required for areas in direct contact with chair caster traffic, and some degree of appearance change is to be expected.



9" X 36" RANDOM CUT TILE



Install: 1/3 Vertical Ashlar



9" X 36" RANDOM CUT TILE

**Hilton Home2 - Vibrant Scheme**  
**Guestroom Accent Tile**  
**(A) CPT-02**

**Product Information**

Style Number/Color	<b>B0331 / c. 885</b>
Product Type	<b>Dynamics Tile</b>
Construction	<b>Multi-Level Pattern Loop/Cut</b>
Fiber	<b>Lextron Enviro-Green Nylon</b>
Dye Method	<b>100 % Solution Dyed</b>
Primary Backing	<b>Woven PET</b>
Secondary Backing	<b>Flex-Aire Modular® Cushion</b>

**Specifications**

Size	<b>9 in. x 36 in. Tile</b>
Gauge	<b>1/10</b>
Stitches per Inch	<b>9</b>
Tufted Weight	<b>22 oz per sq/yd</b>
Total Weight Finished	<b>120 oz</b>
Pile Thickness	<b>.219" Approx.</b>
Total Thickness	<b>.438" Approx.</b>
Suggested Install	<b>Vertical Ashlar</b>

**Performance**

Traffic Class	<b>Heavy</b>
(TARR) Pill Test	<b>Pass</b>
Radiant Panel	<b>Class I</b>
Flammability	<b>ASTM E 648 Class I</b>
Smoke Density	<b>ASTM E 662 Less than 450</b>
LEED Info	<b>Green Label Plus Certified - GLP8320</b>

**Warranty** **10 Year Limited Warranty**

Enviro-Green yarn has 10% pre-consumer recycled content.  
 Recommended for heavy carpet traffic levels.

Carpet should be installed in accordance with the Carpet and Rug Institute's standard CRI-104 CRI-105. Pattern streaks and banding are visually apparent streaking in patterned carpet resulting from linear juxtaposition of pattern elements visible in both length and width direction. IT IS NOT A CARPET DEFECT, but is inherent in solution dyed graphic and cut/loop patterns.

**Product Notes**

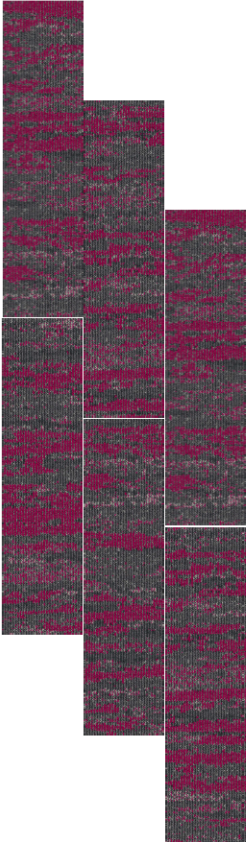
- 1. Specifications are subject to nominal manufacturing variances. Material supply and/or manufacturing processes may necessitate changes without notice. Colors may vary slightly from dye lot to dye lot.
- 2. U.S. Patent numbers: 4,849,267; 6,406,574, US 9,988,760 B2
- 3. Chair pads are recommended for optimum textural performance. Absent the use of chair pads, more intensive maintenance will be required for areas in direct contact with chair caster traffic, and some degree of appearance change is to be expected.



**9" X 36" RANDOM CUT TILE**



**Install: 1/3 Vertical Ashlar**



**9" X 36" RANDOM CUT TILE**

# Hilton Home2 - Vibrant Scheme

## Guestroom Carpet Base

### (A) CP-01.1

#### Product Information

Style Number/Color	<b>728S c. 8531</b>
Product Type	<b>Carpet Cove Base</b>
Construction	<b>CPG - Cut Pile Graphics</b>
Fiber	<b>Lextron Enviro-Green Nylon</b>
Dye Method	<b>100 % Solution Dyed</b>
Primary Backing	<b>Woven Polypropylene</b>
Secondary Backing	<b>Action Bac</b>



#### Specifications

Gauge	<b>1/10</b>
Stitches per Inch	<b>9</b>
Tufted Weight	<b>26 oz per sq/yd</b>
Total Weight Finished	<b>64 oz</b>
Pile Thickness	<b>.250 in.</b>
Width	<b>12 ft.</b>
Suggested Install	<b>Glue per Manufacturer's Recommendation</b>

#### Performance

Traffic Class	<b>Recommended for Cove Base only</b>
Radiant Panel	<b>Class I</b>
Smoke Density	<b>ASTM E 662 Less than 450</b>
Pattern Repeat	<b>025"W x 025"L</b>

<b>Warranty</b>	<b>10 Year Wear Guarantee</b>
-----------------	-------------------------------

Enviro-Green yarn has 10% pre-consumer recycled content.  
Recommended for Cove Base only

Carpet should be installed in accordance with the Carpet and Rug Institute's standard CRI-104 CRI-105. Pattern streaks and banding are visually apparent streaking in patterned carpet resulting from linear juxtaposition of pattern elements visible in both length and width direction. IT IS NOT A CARPET DEFECT, but is inherent in solution dyed graphic and cut/loop patterns.

#### Product Notes

1. Specifications are subject to nominal manufacturing variances. Material supply and/or manufacturing processes may necessitate changes without notice.  
Colors may vary slightly from dye lot to dye lot.
2. U.S. Patent numbers: 4,849,267; 6,406,574, US 9,988,760 B2
3. Chair pads are recommended for optimum textural performance. Absent the use of chair pads, more intensive maintenance will be required for areas in direct contact with chair caster traffic, and some degree of appearance change is to be expected.

# Hilton Home2 - Vibrant Scheme

## Corridor, TV Lounge, Meeting Tile

### (A) CPT-10

#### Product Information

Style Number/Color	<b>B0311/ c. 883</b>
Product Type	<b>Intrepid Tile</b>
Construction	<b>Multi-Level Pattern Loop/Cut</b>
Fiber	<b>Lextron Enviro-Green Nylon</b>
Dye Method	<b>100 % Solution Dyed</b>
Primary Backing	<b>Woven PET</b>
Secondary Backing	<b>Flex-Aire Modular® Cushion</b>

#### Specifications

Size	<b>24 in. x 24 in. Tile</b>
Gauge	<b>1/10</b>
Stitches per Inch	<b>9</b>
Tufted Weight	<b>24 oz per sq/yd</b>
Total Weight Finished	<b>121 oz</b>
Pile Thickness	<b>.250 in. Approx.</b>
Total Thickness	<b>.468 in. Approx.</b>
Suggested Install	<b>Vertical Ashlar/Quarter Turn</b>

#### Performance

Traffic Class	<b>Heavy</b>
(TARR) Pill Test	<b>Pass</b>
Radiant Panel	<b>Class I</b>
Flammability	<b>ASTM E 648 Class I</b>
Smoke Density	<b>ASTM E 662 Less than 450</b>
LEED Info	<b>Green Label Plus Certified - GLP8320</b>

<b>Warranty</b>	<b>10 Year Limited Warranty</b>
-----------------	---------------------------------

Enviro-Green yarn has 10% pre-consumer recycled content.  
Recommended for heavy carpet traffic levels.

Carpet should be installed in accordance with the Carpet and Rug Institute's standard CRI-104 CRI-105. Pattern streaks and banding are visually apparent streaking in patterned carpet resulting from linear juxtaposition of pattern elements visible in both length and width direction. IT IS NOT A CARPET DEFECT, but is inherent in solution dyed graphic and cut/loop patterns.

#### Product Notes

- Specifications are subject to nominal manufacturing variances. Material supply and/or manufacturing processes may necessitate changes without notice. Colors may vary slightly from dye lot to dye lot.
- U.S. Patent numbers: 4,849,267; 6,406,574, US 9,988,760 B2
- Chair pads are recommended for optimum textural performance. Absent the use of chair pads, more intensive maintenance will be required for areas in direct contact with chair caster traffic, and some degree of appearance change is to be expected.



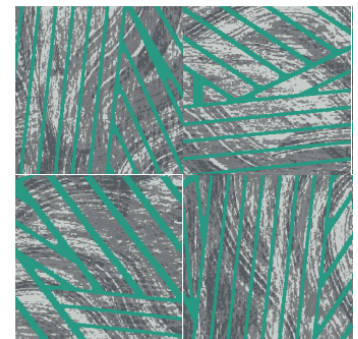
24" X 24" RANDOM CUT TILE



INSTALL: VERTICAL ASHLAR



INSTALL: QUARTER TURN



# Hilton Home2 - Vibrant Scheme

## Carpet Base @ Corridor, TV Lounge, and Meeting Room (A) CP-10.1

### Product Information

Style Number/Color	<b>728S c. X391</b>
Product Type	<b>Carpet Cove Base</b>
Construction	<b>CPG - Cut Pile Graphics</b>
Fiber	<b>Lextron Enviro-Green Nylon</b>
Dye Method	<b>100 % Solution Dyed</b>
Primary Backing	<b>Woven Polypropylene</b>
Secondary Backing	<b>Action Bac</b>



### Specifications

Gauge	<b>1/10</b>
Stitches per Inch	<b>9</b>
Tufted Weight	<b>26 oz per sq/yd</b>
Total Weight Finished	<b>64 oz</b>
Pile Thickness	<b>.250 in.</b>
Width	<b>12 ft.</b>
Suggested Install	<b>Glue per Manufacturer's Recommendation</b>

### Performance

Traffic Class	<b>Recommended for Cove Base only</b>
Radiant Panel	<b>Class I</b>
Smoke Density	<b>ASTM E 662 Less than 450</b>
Pattern Repeatat	<b>025"W x 025"L</b>

<b>Warranty</b>	<b>10 Year Wear Guarantee</b>
-----------------	-------------------------------

Enviro-Green yarn has 10% pre-consumer recycled content.  
Recommended for Cove Base only

Carpet should be installed in accordance with the Carpet and Rug Institute's standard CRI-104/CRI-105.

Pattern streaks and banding are visually apparent streaking in patterned carpet resulting from linear juxtaposition of pattern elements visible in both length and width direction.

IT IS NOT A CARPET DEFECT, but is inherent in solution dyed graphic and cut/loop patterns.

### Product Notes

1. Specifications are subject to nominal manufacturing variances. Material supply and/or manufacturing processes may necessitate changes without notice.  
Colors may vary slightly from dye lot to dye lot.
2. U.S. Patent numbers: 4,849,267; 6,406,574, US 9,988,760 B2
3. Chair pads are recommended for optimum textural performance. Absent the use of chair pads, more intensive maintenance will be required for areas in direct contact with chair caster traffic, and some degree of appearance change is to be expected.

# Hilton Home2 - Vibrant Scheme

## Lobby Tile

### (A) CPT-11

#### Product Information

Style Number/Color	<b>B0305 / c. 886</b>
Product Type	<b>Intrepid Tile</b>
Construction	<b>Multi-Level Pattern Loop/Cut</b>
Fiber	<b>Lextron Enviro-Green Nylon</b>
Dye Method	<b>100 % Solution Dyed</b>
Primary Backing	<b>Woven PET</b>
Secondary Backing	<b>Flex-Aire Modular® Cushion</b>

#### Specifications

Size	<b>24 in. x 24 in. Tile</b>
Gauge	<b>1/10</b>
Stitches per Inch	<b>9</b>
Tufted Weight	<b>24 oz per sq/yd</b>
Total Weight Finished	<b>121 oz</b>
Pile Thickness	<b>.250 in. Approx.</b>
Total Thickness	<b>.468 in. Approx.</b>
Suggested Install	<b>Vertical Ashlar/Quarter Turn</b>

#### Performance

Traffic Class	<b>Heavy</b>
(TARR) Pill Test	<b>Pass</b>
Radiant Panel	<b>Class I</b>
Flammability	<b>ASTM E 648 Class I</b>
Smoke Density	<b>ASTM E 662 Less than 450</b>
LEED Info	<b>Green Label Plus Certified - GLP8320</b>

<b>Warranty</b>	<b>10 Year Limited Warranty</b>
-----------------	---------------------------------

Enviro-Green yarn has 10% pre-consumer recycled content.  
Recommended for heavy carpet traffic levels.

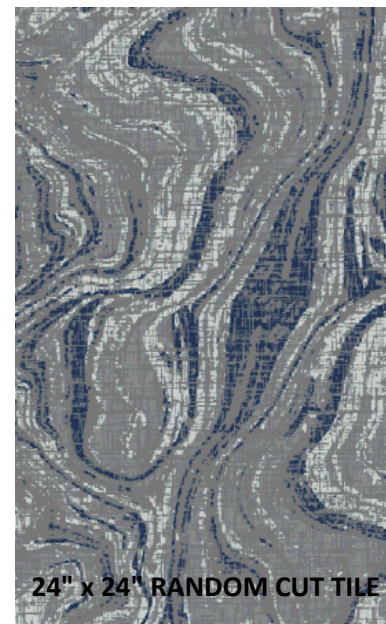
Carpet should be installed in accordance with the Carpet and Rug Institute's standard  
CRI-104/CRI-105.

Pattern streaks and banding are visually apparent streaking in patterned carpet resulting from  
linear juxtaposition of pattern elements visible in both length and width direction.

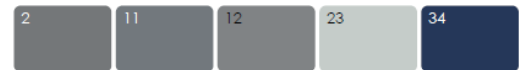
IT IS NOT A CARPET DEFECT, but is inherent in solution dyed graphic and cut/loop patterns.  
and cut/loop patterns.

#### Product Notes

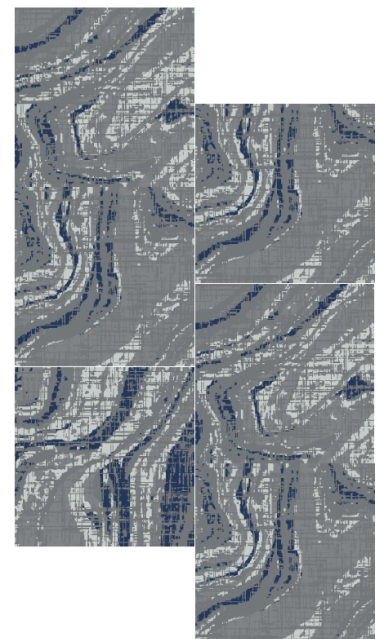
1. Specifications are subject to nominal manufacturing variances. Material supply and/or manufacturing processes may necessitate changes without notice.  
Colors may vary slightly from dye lot to dye lot.
2. U.S. Patent numbers: 4,849,267; 6,406,574, US 9,988,760 B2
3. Chair pads are recommended for optimum textural performance. Absent the use of chair pads, more intensive maintenance will be required for areas in direct contact with chair caster traffic, and some degree of appearance change is to be expected.



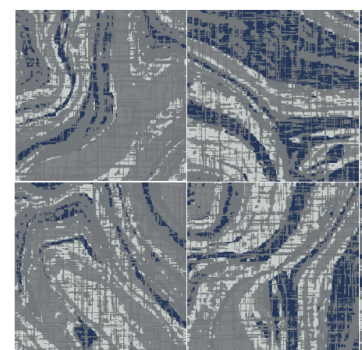
24" x 24" RANDOM CUT TILE



INSTALL: VERTICAL ASHLAR



INSTALL: QUARTER TURN



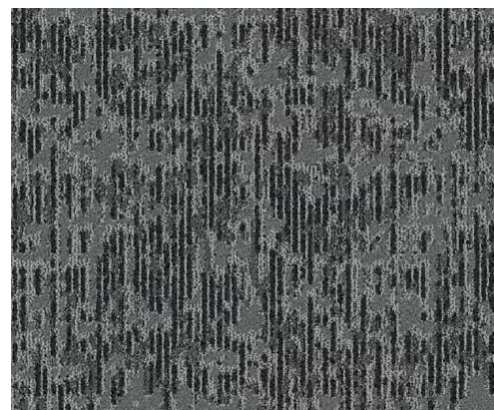
# Hilton Home 2 - Vibrant Scheme

## Stairwell Broadloom

### (A) CPT-12

#### Product Information

Style Number/Color	<b>B0304 / c. 882</b>
Product Type	<b>Dynamics Broadloom</b>
Construction	<b>Multi-Level Pattern Cut/Loop</b>
Fiber	<b>Lextron Enviro-Green Nylon</b>
Dye Method	<b>100 % Solution Dyed</b>
Primary Backing	<b>Woven Polypropylene</b>
Secondary Backing	<b>Actionbac</b>



#### Specifications

Size	<b>12 ft. Width</b>
Gauge	<b>1/10</b>
Stitches per Inch	<b>10</b>
Tufted Weight	<b>36 oz per sq/yd</b>
Total Weight Finished	<b>72 oz per sq/yd</b>
Pile Thickness	<b>.312 in. Approx.</b>
Total Thickness	<b>.375 in. Approx.</b>
Pattern Repeat	<b>36 in. x 27 in.</b>



#### Performance

Traffic Class (TARR)	<b>Heavy</b>
Pill Test	<b>Pass</b>
Radiant Panel	<b>Class I</b>
Flammability	<b>ASTM E 648 Class I</b>
Smoke Density	<b>ASTM E 662 Less than 450</b>
LEED Info	<b>Green Label Plus Certified - GLP2380</b>

#### Warranty

**10 Year Limited Warranty**

Enviro-Green yarn has 10% pre-consumer recycled content.  
Recommended for heavy (public space) carpet traffic levels.

Carpet should be installed in accordance with the Carpet and Rug Institute's standard CRI-104/CRI-105.  
Pattern streaks and banding are visually apparent streaking in patterned carpet resulting from linear juxtaposition of pattern elements visible in both length and width direction.  
IT IS NOT A CARPET DEFECT, but is inherent in solution dyed graphic and cut/loop patterns.

Pattern streaks and banding are visually apparent streaking in patterned carpet resulting from linear juxtaposition of pattern elements visible in both length and width direction.  
IT IS NOT A CARPET DEFECT, but is inherent in solution dyed graphic and cut/loop patterns.

All Specifications subject to normal manufacturing tolerance.



# Hilton Home2 - Vibrant Scheme

## BOH Office Tile

### (B) CPT-12ALT

#### Product Information

Style Number/Color	<b>B0329 c. 885</b>
Product Type	<b>Dynamics Tile</b>
Construction	<b>Multi-Level Pattern Loop/Cut</b>
Fiber	<b>Lextron Enviro-Green Nylon</b>
Dye Method	<b>100 % Solution Dyed</b>
Primary Backing	<b>Woven PET</b>
Secondary Backing	<b>Flex-Aire Modular® Cushion</b>

#### Specifications

Size	<b>9" x 36"</b>
Gauge	<b>1/10</b>
Stitches per Inch	<b>9</b>
Tufted Weight	<b>22 oz per sq/yd</b>
Total Weight Finished	<b>120 oz</b>
Pile Thickness	<b>.219" Approx.</b>
Total Thickness	<b>.438" Approx.</b>
Suggested Install	<b>Vertical Ashlar</b>

#### Performance

Traffic Class	<b>Heavy</b>
(TARR) Pill Test	<b>Pass</b>
Radiant Panel	<b>Class I</b>
Flammability	<b>ASTM E 648 Class I</b>
Smoke Density	<b>ASTM E 662 Less than 450</b>
LEED Info	<b>Green Label Plus Certified - GLP8320</b>

<b>Warranty</b>	<b>10 Year Limited Warranty</b>
-----------------	---------------------------------

Enviro-Green yarn has 10% pre-consumer recycled content.  
Recommended for heavy carpet traffic levels.

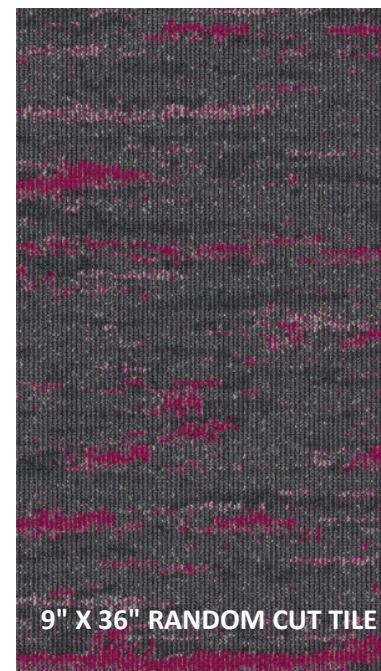
Carpet should be installed in accordance with the Carpet and Rug Institute's standard CRI-104/  
CRI-105.

Pattern streaks and banding are visually apparent streaking in patterned carpet resulting from  
linear juxtaposition of pattern elements visible in both length and width direction.

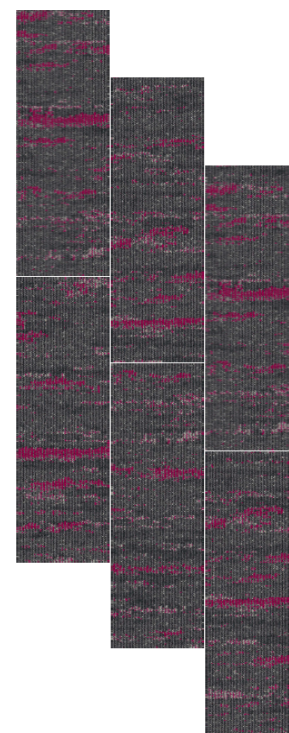
IT IS NOT A CARPET DEFECT, but is inherent in solution dyed graphic and cut/loop patterns.

#### Product Notes

1. Specifications are subject to nominal manufacturing variances. Material supply and/or manufacturing processes may necessitate changes without notice.  
Colors may vary slightly from dye lot to dye lot.
2. U.S. Patent numbers: 4,849,267; 6,406,574, US 9,988,760 B2
3. Chair pads are recommended for optimum textural performance. Absent the use of chair pads, more intensive maintenance will be required for areas in direct contact with chair caster traffic, and some degree of appearance change is to be expected.



INSTALL: VERTICAL ASHLAR



**Hilton Home2 - Vibrant Scheme**  
**Carpet Base @ BOH Offices, Stairwell**  
**(A) CP-12.1**

**Product Information**

Style Number/Color	<b>728S c. 8531</b>
Product Type	<b>Carpet Cove Base</b>
Construction	<b>CPG - Cut Pile Graphics</b>
Fiber	<b>Lextron Enviro-Green Nylon</b>
Dye Method	<b>100 % Solution Dyed</b>
Primary Backing	<b>Woven Polypropylene</b>
Secondary Backing	<b>Action Bac</b>



**Specifications**

Gauge	<b>1/10</b>
Stitches per Inch	<b>9</b>
Tufted Weight	<b>26 oz per sq/yd</b>
Total Weight Finished	<b>64 oz</b>
Pile Thickness	<b>.250 in.</b>
Width	<b>12 ft.</b>
Suggested Install	<b>Glue per Manufacturer's Recommendation</b>

**Performance**

Traffic Class	<b>Recommended for Cove Base only</b>
Radiant Panel	<b>Class I</b>
Smoke Density	<b>ASTM E 662 Less than 450</b>
Pattern Repeat	<b>025"W x 025"L</b>

**Warranty** **10 Year Wear Guarantee**

Enviro-Green yarn has 10% pre-consumer recycled content.  
Recommended for Cove Base only

Carpet should be installed in accordance with the Carpet and Rug Institute’s standard  
CRI-104/CRI-105.

Pattern streaks and banding are visually apparent streaking in patterned carpet resulting from  
linear juxtaposition of pattern elements visible in both length and width direction.

IT IS NOT A CARPET DEFECT, but is inherent in solution dyed graphic and cut/loop patterns.

Product Notes

1. Specifications are subject to nominal manufacturing variances. Material supply and/or manufacturing processes may necessitate changes without notice.  
Colors may vary slightly from dye lot to dye lot.
2. U.S. Patent numbers: 4,849,267; 6,406,574, US 9,988,760 B2
3. Chair pads are recommended for optimum textural performance. Absent the use of chair pads, more intensive maintenance will be required for areas in direct contact with chair caster traffic, and some degree of appearance change is to be expected.

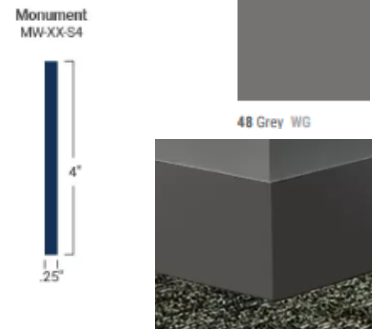
# Hilton Home2 - Vibrant Scheme

## Resilient Products

### Product Information: Wall Base

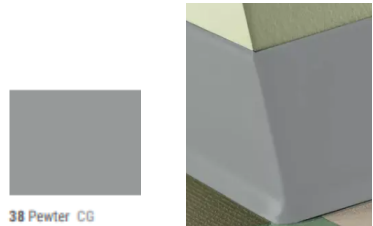
- Hilton Tag#** (A) RB-01 Base @ ERT Guestroom  
 (A) RB-10 Base @ Employee Breakroom  
 (A) RB-11 Base @ Fitness

**Style Number** MW-48-S4  
**Color** 48 Grey  
**Product Type** Millwork Wall Base  
**Size** 4"H x .250"Thick x 8 ft.Lengths  
**Carton Size** 64 ft per carton



- Hilton Tag#** (A) RB-12 Base @ Engineering & Housekeeping

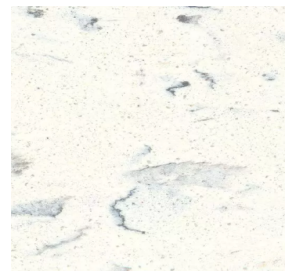
**Style Number** CB-38  
**Color** 38 Pewter  
**Product Type** Traditional Vinyl Wall Base  
**Size** 4"H x 1/8"Thick x 120 ft.Coil  
**Carton Size** 120 ft per carton



### Product Information: Vinyl Composition Tile

- Hilton Tag#** (A) VCT-10 VCT @ Engineering

**Style Number** VCT II  
**Color** 580 Mineral White  
**Product Type** Vinyl Composition Tile  
**Size** 12" x 12" x 1/8" Thick  
**Carton Size** 45 sq ft per carton (45 tiles/carton)



### Product Information: ERT

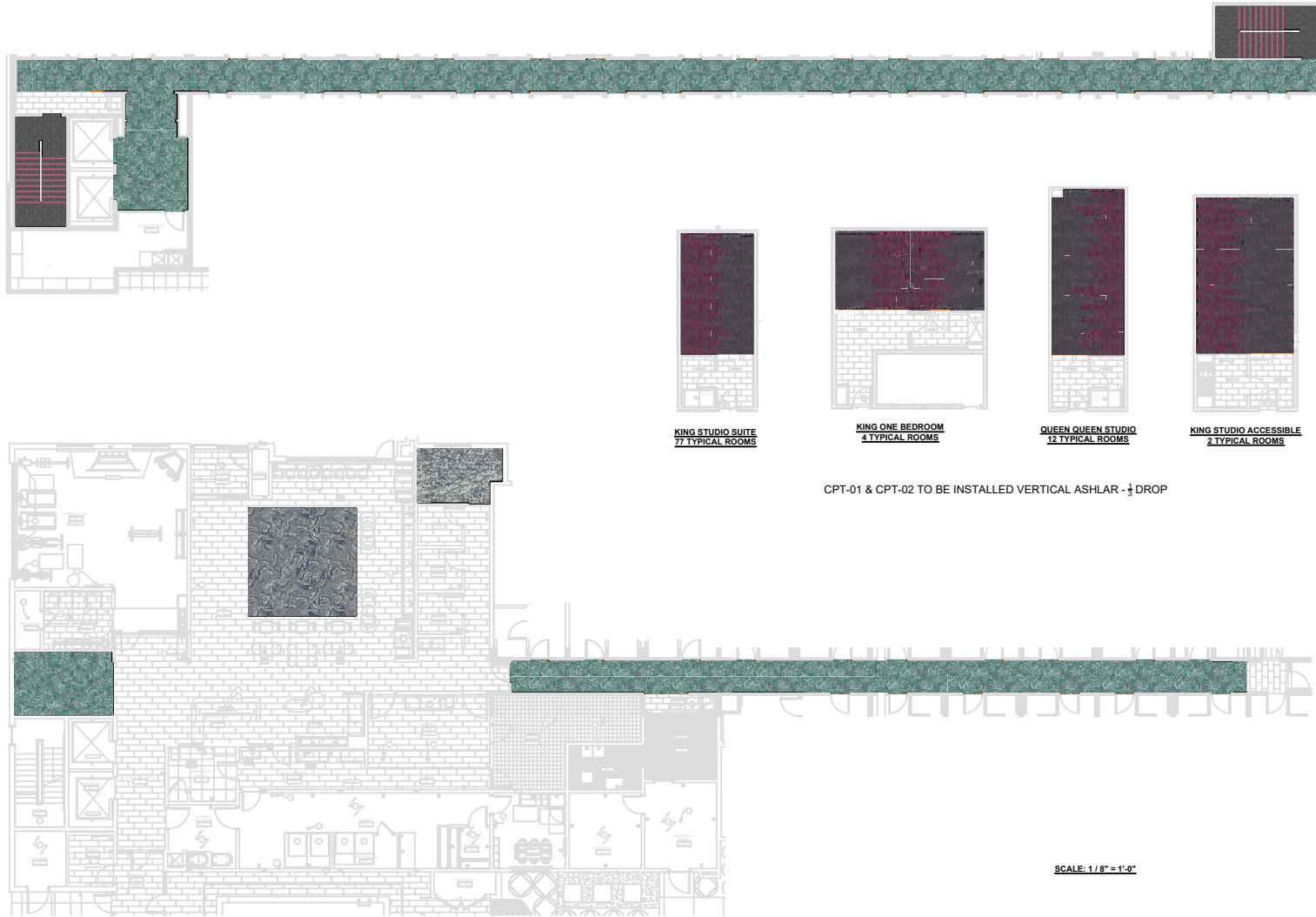
- Hilton Tag#** (A) RF-11 ERT @ Employee Breakroom & Guestroom Alt

**Style Number** Accore  
**Color** Limed Oak 0017  
**Product Type** LVT/ERT - Enhanced Resilient Tile  
**Size** 7" W x 48" L  
**Carton Size** 23.64 sq ft per carton



# Home 2 - Vibrant Scheme

## Prototypical Flooded Plan



### GENERAL NOTES

- 1) This drawing and designs contained therein are the sole property of Tarkett Hospitality Carpet Mills, Inc.
- 2) The red dashed lines indicate known seams. Due to roll sizes and unexpected conditions that may arise, adjustment seams may become necessary during installation. Locations of cross seams are approximate. Actual layout may vary based on roll sizes.
- 3) All contractors using this drawing will be responsible for verifying all dimensions and package requirements. Tarkett Hospitality Carpet Mills, Inc. will not be held responsible for final package requirements.
- 4) These drawings are used to show the interior design intent only and should not be used for construction purposes.

-----  
Seam Lines are indicated by red dashed lines.  
**This plan must be field verified for measurement accuracy.**

Rev. #	Description	Date
R1	NO CHANGE THIS PAGE	08/29/23
R2	PATTERNS	04/30/24
R3	ADJUST LAYOUT	05/16/24

Approved By:  
Date:



TARKETT HOSPITALITY  
285 KRAFT DRIVE  
DALTON, GA. 30721  
(800) 871-3211

### Project Name and Address

HOME2  
VIBRANT SCHEME

### Project

08-K-03000

Development

N/A

Drawn by:

SEAN JACKSON

Date:

08/24/2023

Scale:

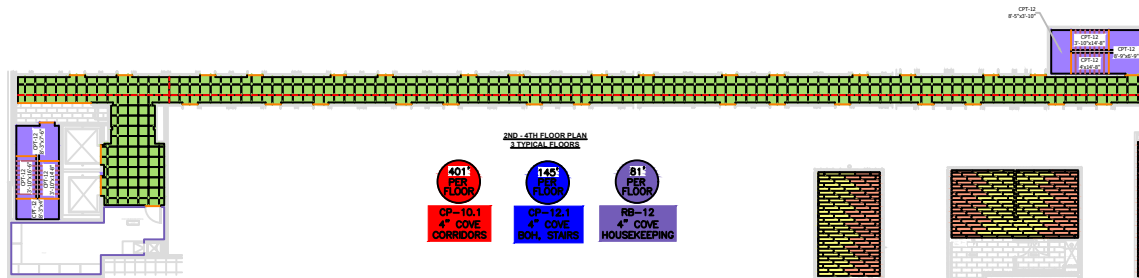
1/8" = 1'-0"

### Sheet

1 OF 1

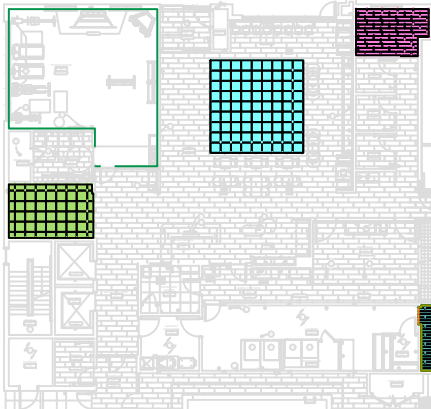
# Home 2 - Vibrant Scheme

## Prototypical Seaming Diagram

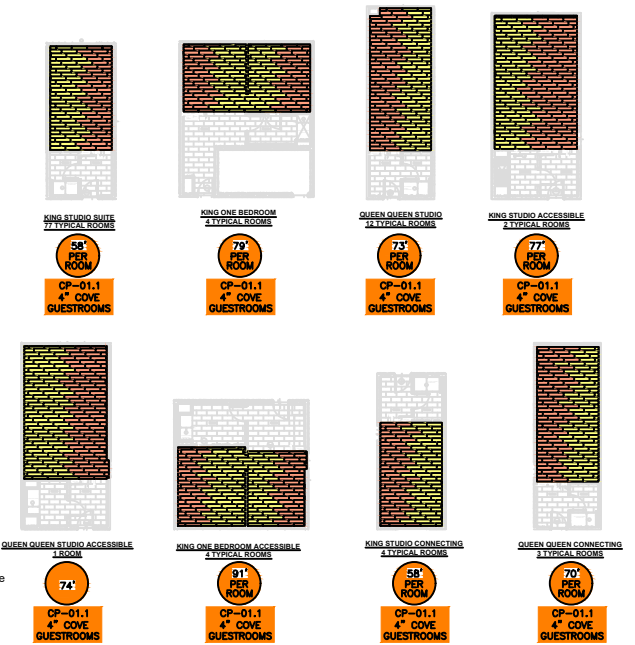


TARKETT Carpet Legend				
Carpet ID	Pattern / Skelcoff	Width	Repeat	Description
CP-01.1	7285 - 8531	12'-0"	N/A	4" COVE BASE - GUESTROOMS
CP-01.2	7285 - X391	12'-0"	N/A	4" COVE BASE - CORRIDORS, TV LOUNGE
CP-01.3	7285 - 8531	12'-0"	N/A	4" COVE BASE - BOH, STAIRS
CPT-01	80327 - 885	0'-9" x 3'-0"	Tile	GUESTROOM - MAIN
CPT-02	80331 - 885	0'-9" x 3'-0"	Tile	GUESTROOM - ACCENT
CPT-10	80311 - 883	2'-0" x 2'-0"	Tile	CORRIDORS
CPT-11	80305 - 886	2'-0" x 2'-0"	Tile	LOBBY
CPT-12	80304 - 882	12'-0"	36" WIDE X 23" RUNNING	STAIRWELLS (BOH OPTION)
CPT-12ALY	80329 - 885	9' x 3'	Tile	BOH OPTION
RB-01	NW-48-S4 GREY	4"	N/A	4" RESILIENT BASE - GUESTROOMS @ ERT
RB-10	NW-48-S4 GREY	4"	N/A	4" RESILIENT BASE - EMPLOYEE BREAKROOM
RB-11	NW-48-S4 GREY	4"	N/A	4" RESILIENT BASE - FITNESS
RB-12	CB-38 PEWTER	4"	N/A	4" RESILIENT BASE - ENGINEERING & HOUSEKEEPING
RF-11	ACCORE - LIMED OAK	7' x 4'	Tile	EMPLOYEE BREAKROOM & GUEST ALT
VCT-10	VCT II - S80 MINERAL WHITE	1' x 1'	Tile	ENGINEERING

\*\* RB-01 TO BE USED ONLY WHEN USING ERT-11 GUEST ALT IN PLACE OF CPT-01 & CPT-02



**INSTALLER NOTE:**  
 Guestroom tile layout is based on a third drop. Due to room dimensions, tile size, and estimating program limitations, some rooms show small slivers of tile at the walls. It is the installers responsibility to adjust tile length/placement to ensure these slivers are eliminated.



CPT-01 & CPT-02 TO BE INSTALLED VERTICAL ASHLAR - ↓ DROP

SCALE: 3/32" = 1'-0"

**GENERAL NOTES**

- 1) This drawing and designs contained herein are the sole property of Tarkett Hospitality Carpet Mills, Inc.
- 2) The red dotted lines indicate known seams. Due to roll sizes and unexpected conditions that may arise, adjustment seams may become necessary during installation. Locations of cross seams are approximate. Actual layout may vary based on roll sizes.
- 3) All contractors using this drawing will be responsible for verifying all dimensions and package requirements. Tarkett Hospitality Carpet Mills, Inc. will not be held responsible for final package requirements.
- 4) These drawings are used to show the interior design intent only and should not be used for construction purposes.

Seam Lines are indicated by red dashed lines.  
 This plan must be field verified for measurement accuracy.

Rev. #	Description	Date
R1	ADD RESILIENT PRODUCTS	08/29/23
R2	PATTERNS	04/30/24
R3	ADJUST LAYOUT	05/16/24

Approved By: \_\_\_\_\_  
 Date: \_\_\_\_\_

Tarkett

TARKETT HOSPITALITY  
 285 KRAFT DRIVE  
 DALTON, GA. 30721  
 (800) 871-3211

Project Name and Address

HOME2  
 VIBRANT SCHEME

Project	Sheet
Development N/A	1 OF 1
Drawn by SUSAN JACKSON	
Date 08/24/2023	
Scale 3/32" = 1'-0"	