

LivSmart Studios by Hilton



Manufacturer: Tarkett Hospitality
Address: 285 Kraft Drive
Dalton, GA 30721

Phone: 800.871.3211
Contact: HiltonOrders@tarkett.com
Web: www.tarketthospitality.com

LivSmart Studios - Matcha and Merlot Schemes: Accent Carpet Tile (1) @ Guest Corridor - Light Grey

Product Information - Hilton Tag# CP-11

Style Number/Color	B0323 c. 882
Product Type	Dynamics Tile
Construction	Multi-level Pattern Cut/Loop
Fiber	Lextron Enviro-Green Nylon
Dye Method	100% Solution Dyed
Primary Backing	Woven Polypropylene
Secondary Backing	Flex-Aire Modular® Cushion

Specification

Size	24 in. x 24 in.
Gauge	1/10
Stitches per Inch	9
Tufted Weight	22 oz per sq/yd
Total Weight Finished	120 oz
Pile Thickness	.220 in. Approx.
Total Thickness	.376 in. Approx.
Suggested Install	Monolithic

Performance

Traffic Class	Heavy
(TARR) Pill Test	Pass
Radiant Panel	Class I
Flammability	ASTM E 648 Class I
Smoke Density	ASTM E 662 Less than 450
LEED Info	Green Label Plus Certified - GLP8320

Warranty **10 Year Limited Warranty**

Enviro-Green yarn has 10% pre-consumer recycled content.
Recommended for heavy carpet traffic levels.

Carpet should be installed in accordance with the Carpet and Rug Institute's standard CRI-104/CRI-105.
Pattern Streaks and banding are visually apparent streaking in patterned carpet resulting from linear juxtaposition of pattern elements visible in both length and width direction.
IT IS NOT A CARPET DEFECT, but is inherent in solution dyed graphic and cut/loop patterns.

Product Notes

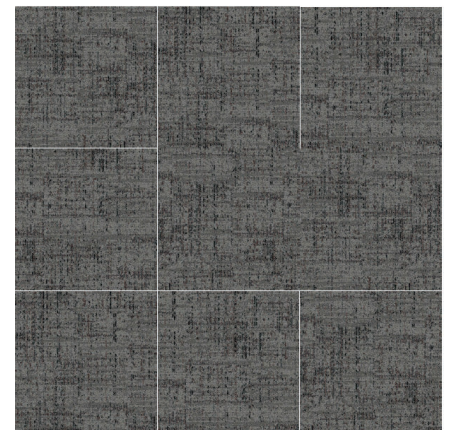
- Specifications are subject to nominal manufacturing variances. Material supply and/or manufacturing processes may necessitate changes without notice. Colors may vary slightly from dye lot to dye lot.
- U.S. Patent numbers: 4,849,267; 6,406,574, US 9,988,760 B2
- Chair pads are recommended for optimum textural performance. Absent the use of chair pads, more intensive maintenance will be required for areas in direct contact with chair caster traffic, and some degree of appearance change is to be expected.



24" x 24" RANDOM CUT TILE



Install Monolithic



24" X 24 RANDOM CUT TILE

LivSmart Studios - Matcha and Merlot Schemes Accent Carpet Tile (2) @ Guest Corridor - Orange

Product Information - Hilton Tag# CP-12

Style Number/Color	B0321 c. 441
Product Type	Dynamics Tile
Construction	Multi-Level Pattern Cut/Loop
Fiber	Lextron Enviro-Green Nylon
Dye Method	100% Solution Dyed
Primary Backing	Woven Polypropylene
Secondary Backing	Flex-Aire Modular® Cushion

Specification

Size	24 in. x 24 in.
Gauge	1/10
Stitches per Inch	9
Tufted Weight	22 oz per sq/yd
Total Weight Finished	120 oz
Pile Thickness	.250 in Approx.
Total Thickness	.405 in. Approx.
Suggested Install	Monolithic

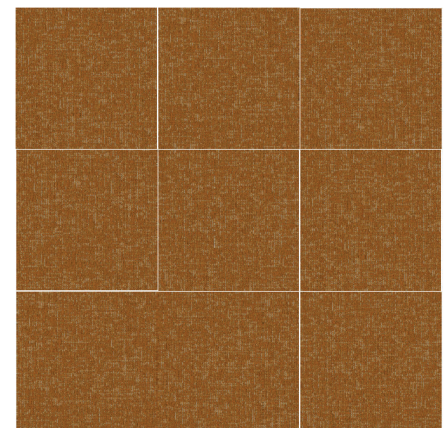
Performance

Traffic Class	Heavy
(TARR) Pill Test	Pass
Radiant Panel	Class I
Flammability	ASTM E 648 Class I
Smoke Density	ASTM E 662 Less than 450
LEED Info	Green Label Plus Certified - GLP8320

Warranty **10 Year Limited Warranty**



Install Monolithic



24" X 24 RANDOM CUT TILE

Enviro-Green yarn has 10% pre-consumer recycled content.
Recommended for heavy carpet traffic levels.

Carpet should be installed in accordance with the Carpet and Rug Institute's standard CRI-104/CRI-105. Pattern streaks and banding are visually apparent streaking in patterned carpet resulting from linear juxtaposition of pattern elements visible in both length and width direction.

IT IS NOT A CARPET DEFECT, but is inherent in solution dyed graphic and cut/loop patterns.

Product Notes

- Specifications are subject to nominal manufacturing variances. Material supply and/or manufacturing processes may necessitate changes without notice. Colors may vary slightly from dye lot to dye lot.
- U.S. Patent numbers: 4,849,267; 6,406,574, US 9,988,760 B2
- Chair pads are recommended for optimum textural performance. Absent the use of chair pads, more intensive maintenance will be required for areas in direct contact with chair caster traffic, and some degree of appearance change is to be expected.

Accore™

Product Specification

1. PROPRIETARY PRODUCT/MANUFACTURER

1.1. **Proprietary Product:** Accore Luxury Vinyl flooring is a rigid core construction engineered from the inside, out—and designed to outperform the extreme demands of today's hospitality environments. Suitable for light commercial hospitality environments such as guest rooms.

1.2. **Manufacturer:**

Tarkett Hospitality Phone: (800)-871-3211
285 Kraft Dr..
Dalton, GA 30721
Web: www.tarketthospitality.com

1.3. **Proprietary Product Description:**

1.3.1. **Construction:** Tarkett Accore is an Ortho-Phthalate-Free, 100% virgin material Rigid Core luxury vinyl constructed with a plastic core and an IXPE acoustical backing.

1.3.2. **Characteristics:**

- **Edge treatment:** Micro-Bevel
- **Overall thickness:** 0.197" (5 mm)
- **Wearlayer Thickness:** .020" (0.51 mm)
- **Core Thickness:** 0.157" (4 mm)
- **Accoustical Backing:** 0.039" (1 mm) IXPE
- **Installation System:** Click-Drop-Lock (I4F)

1.3.3. **Tile/Plank size and Packaging:**

- **7" x 48" (17.78 cm x 121.92 cm)**
10 tiles per box, 23.64 ft² (2.19 m²), 38 lbs. (17.24 kg),
55 boxes per pallet

2. PRODUCT PERFORMANCE AND TECHNICAL DATA

- 2.1. **Rigid Core Polymeric Floor Tile** (ASTM F3261): Class I, Type A or B, Grade 1, Backing Class B
- 2.2. **Dimensional Stability** (ASTM F2199): Passes
- 2.3. **Indentation Recovery** (ASTM F1914): Passes
- 2.4. **Heat Stability** (ASTM F1514): $\Delta E \leq 8$
- 2.5. **Light Stability** (ASTM F1515): $\Delta E \leq 8$
- 2.6. **Impact Sound Reduction** (ASTM E2179): $\Delta IIC \geq 20$ dB
- 2.7. **IIC Impact Sound Reduction Rating** (ASTM E492): 68 (tested with 6" concrete slab with drop ceiling)
- 2.8. **Chemical Resistance** (ASTM F925): Passes
- 2.9. **VOC Requirements** (ASTM D5116): < 0.1 mg/m³

3. INSTALLATION

See Accore installation instructions for complete details.

Floating installations do not require any adhesives.

For Glue Down installations, see below:

3.1. **Adhesives:**

- **Tarkett C-GU High Moisture Adhesive**

Porous & Non-Porous Substrates: 125-150 sq. ft. per gallon

4. AVAILABILITY AND COST

Available direct through Tarkett retailers nationwide.

5. MAINTENANCE

72 hours after installation is completed, initial maintenance procedures must be implemented in accordance with manufacturer's requirements. Refer to Even Plane Maintenance Instructions for complete maintenance details.

6. TECHNICAL SERVICES

Visit us on the web at www.tarketthospitality.com

Contact Technical support at (800) -871-3211

7. WARRANTY

Limited 15-year Light Commercial warranty. For complete details, contact Tarkett or an authorized Tarkett retailer.



Accore™

Product Specification

1. PROPRIETARY PRODUCT/MANUFACTURER

- 1.1. **Proprietary Product:** Accore Luxury Vinyl flooring is a rigid core construction engineered from the inside, out—and designed to outperform the extreme demands of today's hospitality environments. Suitable for light commercial hospitality environments such as guest rooms.
- 1.2. **Manufacturer:**
Tarkett Hospitality Phone: (800)-871-3211
285 Kraft Dr..
Dalton, GA 30721
Web: www.tarketthospitality.com
- 1.3. **Proprietary Product Description:**
 - 1.3.1. **Construction:** Tarkett Accore is an Ortho-Phthalate-Free, 100% virgin material Rigid Core luxury vinyl constructed with a plastic core and an IXPE acoustical backing.
 - 1.3.2. **Characteristics:**
 - **Edge treatment:** Micro-Bevel
 - **Overall thickness:** 0.197" (5 mm)
 - **Wearlayer Thickness:** .020" (0.51 mm)
 - **Core Thickness:** 0.157" (4 mm)
 - **Accoustical Backing:** 0.039" (1 mm) IXPE
 - **Installation System:** Click-Drop-Lock (I4F)
 - 1.3.3. **Tile/Plank size and Packaging:**
 - **7" x 48" (17.78 cm x 121.92 cm)**
10 tiles per box, 23.64 ft² (2.19 m²), 38 lbs. (17.24 kg),
55 boxes per pallet

2. PRODUCT PERFORMANCE AND TECHNICAL DATA

- 2.1. **Rigid Core Polymeric Floor Tile (ASTM F3261):** Class I, Type A or B, Grade 1, Backing Class B
- 2.2. **Dimensional Stability (ASTM F2199):** Passes
- 2.3. **Indentation Recovery (ASTM F1914):** Passes
- 2.4. **Heat Stability (ASTM F1514):** $\Delta E \leq 8$
- 2.5. **Light Stability (ASTM F1515):** $\Delta E \leq 8$
- 2.6. **Impact Sound Reduction (ASTM E2179):** $\Delta IIC \geq 20$ dB
- 2.7. **IIC Impact Sound Reduction Rating (ASTM E492):** 68 (tested with 6" concrete slab with drop ceiling)
- 2.8. **Chemical Resistance (ASTM F925):** Passes
- 2.9. **VOC Requirements (ASTM D5116):** < 0.1 mg/m³

3. INSTALLATION

See Accore installation instructions for complete details.
Floating installations do not require any adhesives.
For Glue Down installations, see below:

3.1. Adhesives:

- **Tarkett C-GU High Moisture Adhesive**
Porous & Non-Porous Substrates: 125-150 sq. ft. per gallon

4. AVAILABILITY AND COST

Available direct through Tarkett retailers nationwide.

5. MAINTENANCE

72 hours after installation is completed, initial maintenance procedures must be implemented in accordance with manufacturer's requirements. Refer to Even Plane Maintenance Instructions for complete maintenance details.

6. TECHNICAL SERVICES

Visit us on the web at www.tarketthospitality.com

Contact Technical support at (800) -871-3211

7. WARRANTY

Limited 15-year Light Commercial warranty. For complete details, contact Tarkett or an authorized Tarkett retailer.



LivSmart Studios - Matcha and Merlot Schemes: Broadloom Carpet @ Stairwell

Product Information - Hilton Tag# CP-13

Style Number/Color	B0312 / c. 982
Product Type	Dynamics Broadloom
Construction	Multi-Level Pattern Cut/Loop
Fiber	CF Lextron Enviro-Green Nylon
Dye Method	100 % Solution Dyed
Primary Backing	Woven Polypropylene
Secondary Backing	Actionbac

Specifications

Size	12 ft. Width
Gauge	1/10
Stitches per Inch	10
Tufted Weight	32 oz per sq/yd
Total Weight Finished	68 oz
Pile Thickness	.312 in.
Total Thickness	.375 in. Approx.
Pattern Repeat	72 in. W x 96 in. L

Performance

Traffic Class (TARR)	Moderate
Pill Test	Pass
Radiant Panel	Class I
Flammability	ASTM E 648 Class I
Smoke Density	ASTM E 662 Less than 450
LEED Info	Green Label Plus Certified - GLP2380

Warranty

10 Year Limited Warranty

Enviro-Green yarn has 10% pre-consumer recycled content.
Recommended for heavy (public space) carpet traffic levels.

Carpet should be installed in accordance with the Carpet and Rug Institute's standard CRI-104/CRI-105.
Pattern streaks and banding are visually apparent streaking in patterned carpet resulting from linear juxtaposition of pattern elements visible in both length and width direction.
IT IS NOT A CARPET DEFECT, but is inherent in solution dyed graphic and cut/loop patterns.

Pattern streaks and banding are visually apparent streaking in patterned carpet resulting from linear juxtaposition of pattern elements visible in both length and width direction.
IT IS NOT A CARPET DEFECT, but is inherent in solution dyed graphic and cut/loop patterns.

All Specifications subject to normal manufacturing tolerance.



LivSmart Studios - Matcha and Merlot Schemes: Resilient Wall Base

Product Information: Resilient Wall Base

Hilton Tag# B-01 (A)(B) - Resilient Base @ Guestroom & Bath

Style Number MW-31-F
 Color 31 Zephyr
 Product Type Millwork Wall Base - Reveal
 Size Profile
 Carton Size 4.25" x .25 Thick x 8' L
 64 LF per Carton



31 Zephyr CB



Hilton Tag # B-10ALT (A)(B) - Resilient Base @ Guest Corridors

Style Number MW-32-F
 Color 32 Pebble
 Product Type Millwork Wall Base - Reveal Profile
 Size 4.25" x .25 Thick x 8' L
 Carton Size 64 LF per Carton



32 Pebble WG



Hilton Tag #B-11 (A)(B) - Resilient Base @ Public Areas & BOH

Style Number MW-63-F
 Color 63 Burnt Umber
 Product Type Millwork Wall Base - Reveal Profile
 Size 4.25" x .25 Thick x 8' L
 Carton Size 64 LF per Carton



63 Burnt Umber B



Product Information: Vinyl Composition Tile

Hilton Tag #RF-12 (A)(B) - Vinyl Composition Tile @ BOH

Style Number VCT II
 Color 873 Daylight
 Product Type Vinyl Composition Tile
 Size 24" x 24"
 Carton Size 45 sq/ft per carton



Product Information - Static Dissipative Tile

Hilton Tag #RF-11 (A)(B) - Static Dissipative Tile @ PBX

Style Number IQGRA
 Color 0950 Black Grey
 Product Type Static Dissipative Tile
 Size 24" x 24"
 Carton Size 14 pcs per carton

