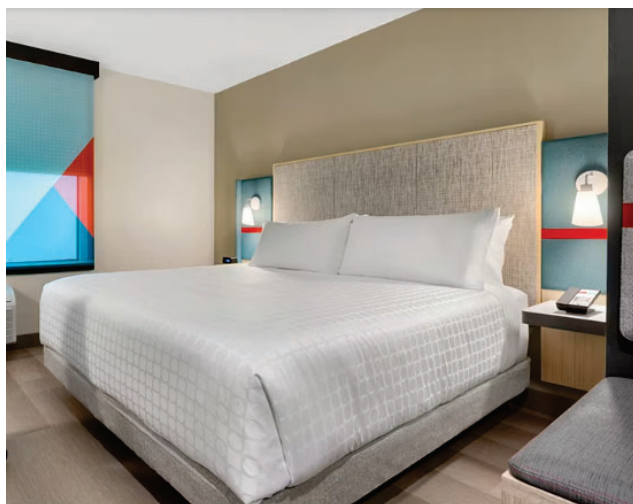


avid

AN IHG HOTEL



 **Tarkett Hospitality**

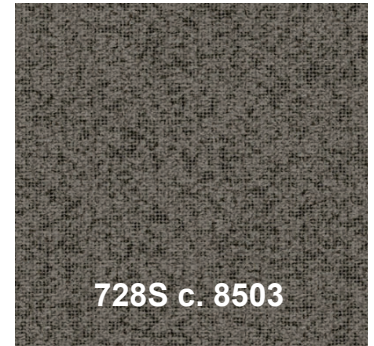
Manufacturer: Tarkett Hospitality
Address: 285 Kraft Drive
Dalton, GA 30721

Phone: 800.871.3211
Contact: IHG.Orders@tarkett.com
Web: www.tarketthospitality.com

avid Hotels: Public Areas Carpet Carpet Wall Base @ Stairwells

Product Information - IHG SPEC NO: REP-CB02

Style Number/Color	728S c. 8503
Product Type	Carpet Cove Base (4"H Main) (12"H Treads)
Construction	CPG - Cut Pile Graphics
Fiber	100% C.F. Lextron Enviro-Green Nylon
Dye Method	Solution Dyed
Primary Backing	Woven Polypropylene
Secondary Backing	Action Bac



Specifications

Gauge	1/10
Stitches per Inch	9
Tufted Weight	26 oz per sq/yd
Total Weight Finished	64 oz
Pile Thickness	.250 in. Approx.
Width	12 ft
Suggested Install	Adhesive per Manufacturer's Recommendation

Performance

Traffic Class	Recommended for Cove Base only
Radiant Panel	Class I
Smoke Density	ASTM E 662 Less than 450
Pattern Repeat	.25 in. W x .25 in. L

Warranty **10 Year Wear Guarantee**

Enviro-Green yarn has 10% pre-consumer recycled content.
Recommended for heavy carpet traffic levels.

Carpet should be installed in accordance with the Carpet and Rug Institute's standard CRI-104/CRI-105.

Pattern streaks and banding are visually apparent streaking in patterned carpet resulting from linear juxtaposition of pattern elements visible in both length and width direction.

IT IS NOT A CARPET DEFECT, but is inherent in solution dyed graphic and cut/loop patterns.

Product Notes

1. Specifications are subject to nominal manufacturing variances. Material supply and/or manufacturing processes may necessitate changes without notice.
Colors may vary slightly from dye lot to dye lot.
2. U.S. Patent numbers: 4,849,267; 6,406,574, US 9,988,760 B2
3. Chair pads are recommended for optimum textural performance. Absent the use of chair pads, more intensive maintenance will be required for areas in direct contact with chair caster traffic, and some degree of appearance change is to be expected.

HARTEX®

IHG SPEC NO: REP-CP01
Tarkett Style: LPX32

HARTEX® 32 SPECIFICATIONS

SPECIFICATION DATA

Product Name	Hartex® 32
Material Weight	32 oz./sq. yd.
Density	8.0 lbs./cu. ft.
Thickness	0.335"
Product Dimensions	6' x 60' (40 SY)
Color	Gray
Tensile Strength	161.4 lbs
Traffic Class	Heavy
FHA Class	2
Material Content	100% Pre-Consumer Synthetic Fiber – Needle-punched and Thermal Bonded
Indoor Air Quality	CRI Green Label Plus-certified



Pad to be used with REP-CPT05

FLAME CERTIFICATION

Pill Test	Pass	DOC-FF 1-70
Radiant Panel	Class I	ASTM E648
Smoke Test	<450	ASTM E662

THERMAL INSULATION

R-Value	2.12
---------	------

PRODUCT OVERVIEW

Hartex 32 is made from 100% pre-consumer synthetic fiber and will not support the growth of mold or mildew, and offers a quick and easy installation process. Hartex 32 has excellent thermal insulation and acoustical properties. Hartex 32 provides comfort underfoot and is less fatiguing than direct-glue-down installations. Contributes to LEED® credits. LEED points must be considered along with other building components and must be determined by the specifier/architect or LEED accredited representative.

Hartex 32 is designed for use in commercial and hospitality applications, including, but not limited to: guest rooms, meeting rooms, offices, dorm rooms, and retail space. Hartex 32 should be installed using conventional stretch-in installation only.



Leggett & Platt
INCORPORATED

P.O. Box 727 | 34 Industrial Court E | Villa Rica, GA 30180 | 800.241.1148 | P 770.459.3653 | F 770.459.3655 | LPHospitality.com

Accore™

Product Specification

1. PROPRIETARY PRODUCT/MANUFACTURER

- 1.1. **Proprietary Product:** Accore Luxury Vinyl flooring is a rigid core construction engineered from the inside, out—and designed to outperform the extreme demands of today's hospitality environments. Suitable for light commercial hospitality environments such as guest rooms.
- 1.2. **Manufacturer:**
Tarkett Hospitality Phone: (800)-871-3211
285 Kraft Dr..
Dalton, GA 30721
Web: www.tarketthospitality.com
- 1.3. **Proprietary Product Description:**
 - 1.3.1. **Construction:** Tarkett Accore is an Ortho-Phthalate-Free, 100% virgin material Rigid Core luxury vinyl constructed with a plastic core and an IXPE acoustical backing.
 - 1.3.2. **Characteristics:**
 - **Edge treatment:** Micro-Bevel
 - **Overall thickness:** 0.197" (5 mm)
 - **Wearlayer Thickness:** .020" (0.51 mm)
 - **Core Thickness:** 0.157" (4 mm)
 - **Accoustical Backing:** 0.039" (1 mm) IXPE
 - **Installation System:** Click-Drop-Lock (I4F)
 - 1.3.3. **Tile/Plank size and Packaging:**
7" x 60" (17.78 cm x 152.4 cm)
8 tile per box, 23.62 ft² (2.19 m²), 38 lbs. (17.24kg),
55 boxes per pallet

2. PRODUCT PERFORMANCE AND TECHNICAL DATA

- 2.1. **Rigid Core Polymeric Floor Tile (ASTM F3261):** Class I, Type A or B, Grade 1, Backing Class B
- 2.2. **Dimensional Stability (ASTM F2199):** Passes
- 2.3. **Indentation Recovery (ASTM F1914):** Passes
- 2.4. **Heat Stability (ASTM F1514):** $\Delta E \leq 8$
- 2.5. **Light Stability (ASTM F1515):** $\Delta E \leq 8$
- 2.6. **Impact Sound Reduction (ASTM E2179):** $\Delta IIC \geq 20dB$
- 2.7. **IIC Impact Sound Reduction Rating (ASTM E492):** 68 (tested with 6" concrete slab with drop ceiling)
- 2.8. **Chemical Resistance (ASTM F925):** Passes
- 2.9. **VOC Requirements (ASTM D5116):** $< 0.1 \text{ mg/m}^3$

3. INSTALLATION

See Accore installation instructions for complete details.
Floating installations do not require any adhesives.
For Glue Down installations, see below:

3.1. Adhesives:

- **Tarkett C-GU High Moisture Adhesive**
Porous & Non-Porous Substrates: 125-150 sq. ft. per gallon

4. AVAILABILITY AND COST

Available direct through Tarkett retailers nationwide.

5. MAINTENANCE

72 hours after installation is completed, initial maintenance procedures must be implemented in accordance with manufacturer's requirements. Refer to Even Plane Maintenance Instructions for complete maintenance details.

6. TECHNICAL SERVICES

Visit us on the web at www.tarketthospitality.com
Contact Technical support at (800) -871-3211

7. WARRANTY

Limited 15-year Light Commercial warranty. For complete details, contact Tarkett or an authorized Tarkett retailer.



Accore, Color 0027 Greige

avid Hotels: Public Areas Carpet Broadloom Carpet @ Corridor

Product Information - IHG SPEC NO: REP-CPT01

Style Number/Color	B0614 c. 172
Product Type	Intrepid Broadloom
Construction	Multi-Level Pattern Cut/Loop
Fiber	CF Lextron Enviro-Green Nylon
Dye Method	100 % Solution Dyed
Primary Backing	Woven Polypropylene
Secondary Backing	LX24 Cushion

Specifications

Size	12 ft. Width
Gauge	1/10
Stitches per Inch	10
Tufted Weight	30 oz per sq/yd
Total Weight Finished	106 oz
Pile Thickness	.250 in.
Total Thickness	.375 in.
Pattern Repeat	Approx. 72 in x 121 in.

Performance

Traffic Class (TARR)	Moderate
Pill Test	Pass
Radiant Panel	Class I
Flammability	ASTM E 648 Class I
Smoke Density	ASTM E 662 Less than 450
LEED Info	Green Label Plus Certified - GLP2380

Warranty

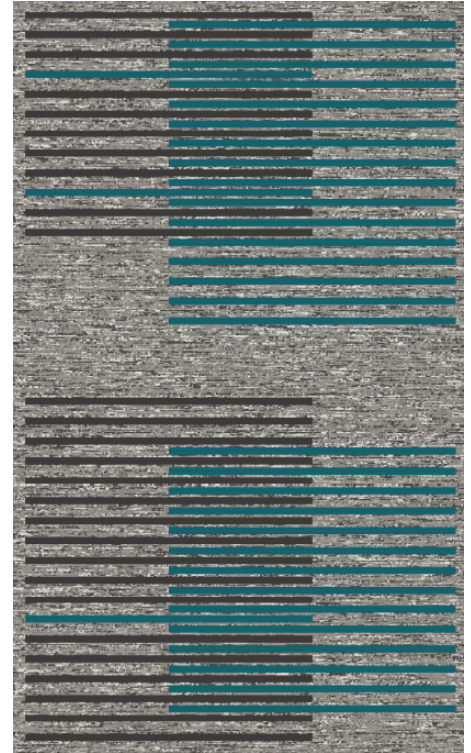
10 Year Limited Warranty

Enviro-Green yarn has 10% pre-consumer recycled content.
Recommended for heavy (public space) carpet traffic levels.

Carpet should be installed in accordance with the Carpet and Rug Institute's standard CRI-104/CRI-105.
Pattern streaks and banding are visually apparent streaking in patterned carpet resulting from linear juxtaposition of pattern elements visible in both length and width direction.
IT IS NOT A CARPET DEFECT, but is inherent in solution dyed graphic and cut/loop patterns.

Pattern streaks and banding are visually apparent streaking in patterned carpet resulting from linear juxtaposition of pattern elements visible in both length and width direction.
IT IS NOT A CARPET DEFECT, but is inherent in solution dyed graphic and cut/loop patterns.

All Specifications subject to normal manufacturing tolerance.



avid Hotels: Public Areas Carpet Broadloom Carpet @ Corridor Door Drops & Transitions

Product Information - IHG SPEC NO: REP-CPT02

Style Number/Color	B0620 c. 172
Product Type	Intrepid Broadloom
Construction	Multi-Level Pattern Cut/Loop
Fiber	CF Lextron Enviro-Green Nylon
Dye Method	100 % Solution Dyed
Primary Backing	Woven Polypropylene
Secondary Backing	LX24 Cushion

Specifications

Size	12 ft. Width
Gauge	1/10
Stitches per Inch	10
Tufted Weight	30 oz per sq/yd
Total Weight Finished	106 oz
Pile Thickness	.250 in.
Total Thickness	.375 in.
Pattern Repeat	Approx. 36 in. W x 63 in. L

Performance

Traffic Class (TARR)	Moderate
Pill Test	Pass
Radiant Panel	Class I
Flammability	ASTM E 648 Class I
Smoke Density	ASTM E 662 Less than 450
LEED Info	Green Label Plus Certified - GLP2380

Warranty

10 Year Limited Warranty

Enviro-Green yarn has 10% pre-consumer recycled content.
Recommended for heavy (public space) carpet traffic levels.

Carpet should be installed in accordance with the Carpet and Rug Institute's standard CRI-104/CRI-105.
Pattern streaks and banding are visually apparent streaking in patterned carpet resulting from linear juxtaposition of pattern elements visible in both length and width direction.
IT IS NOT A CARPET DEFECT, but is inherent in solution dyed graphic and cut/loop patterns.

Pattern streaks and banding are visually apparent streaking in patterned carpet resulting from linear juxtaposition of pattern elements visible in both length and width direction.
IT IS NOT A CARPET DEFECT, but is inherent in solution dyed graphic and cut/loop patterns.

All Specifications subject to normal manufacturing tolerance.



avid Hotels: Public Areas Carpet Broadloom Carpet @ Elevator Lobby

Product Information - IHG SPEC NO: REP-CPT03

Style Number/Color	B0612 c. 172
Product Type	Intrepid Broadloom
Construction	Multi-Level Pattern Cut/Loop
Fiber	CF Lextron Enviro-Green Nylon
Dye Method	100 % Solution Dyed
Primary Backing	Woven Polypropylene
Secondary Backing	LX24 Cushion

Specifications

Size	12 ft. Width
Gauge	1/10
Stitches per Inch	10
Tufted Weight	30 oz per sq/yd
Total Weight Finished	106 oz
Pile Thickness	.250 in.
Total Thickness	.375 in.
Pattern Repeat	Approx. 144 in. W x 312 in. L

Performance

Traffic Class (TARR)	Moderate
Pill Test	Pass
Radiant Panel	Class I
Flammability	ASTM E 648 Class I
Smoke Density	ASTM E 662 Less than 450
LEED Info	Green Label Plus Certified - GLP2380

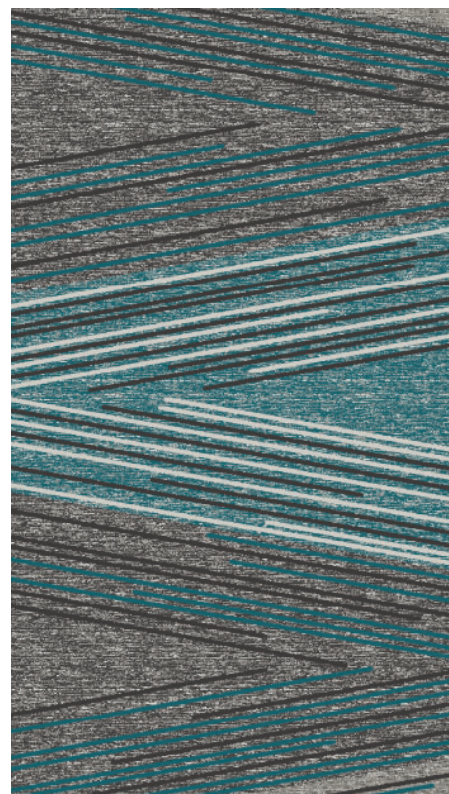
Warranty **10 Year Limited Warranty**

Enviro-Green yarn has 10% pre-consumer recycled content.
Recommended for heavy (public space) carpet traffic levels.

Carpet should be installed in accordance with the Carpet and Rug Institute's standard CRI-104/CRI-105.
Pattern streaks and banding are visually apparent streaking in patterned carpet resulting from linear juxtaposition of pattern elements visible in both length and width direction.
IT IS NOT A CARPET DEFECT, but is inherent in solution dyed graphic and cut/loop patterns.

Pattern streaks and banding are visually apparent streaking in patterned carpet resulting from linear juxtaposition of pattern elements visible in both length and width direction.
IT IS NOT A CARPET DEFECT, but is inherent in solution dyed graphic and cut/loop patterns.

All Specifications subject to normal manufacturing tolerance.



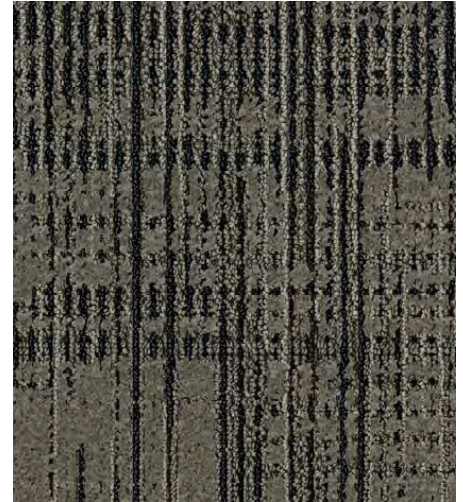
avid Hotels: Public Areas Carpet Broadloom Carpet @Stairwells

Product Information - IHG SPEC NO: REP-CPT04

Style Number/Color	B0616 c. 120
Product Type	Dynamics Broadloom
Construction	Multi-Level Pattern Cut/Loop
Fiber	CF Lextron Enviro-Green Nylon
Dye Method	100 % Solution Dyed
Primary Backing	Woven Polypropylene
Secondary Backing	Actionbac

Specifications

Size	12 ft. Width
Gauge	1/10
Stitches per Inch	10
Tufted Weight	32 oz per sq/yd
Total Weight Finished	68 oz
Pile Thickness	.250 in.
Pattern Repeat	Approx. 72 in. W x 131 in. L



Performance

Traffic Class (TARR)	Moderate
Pill Test	Pass
Radiant Panel	Class I
Flammability	ASTM E 648 Class I
Smoke Density	ASTM E 662 Less than 450
LEED Info	Green Label Plus Certified - GLP2380

Warranty

10 Year Limited Warranty

Enviro-Green yarn has 10% pre-consumer recycled content.
Recommended for heavy (public space) carpet traffic levels.

Carpet should be installed in accordance with the Carpet and Rug Institute's standard CRI-104/CRI-105.
Pattern streaks and banding are visually apparent streaking in patterned carpet resulting from linear juxtaposition of pattern elements visible in both length and width direction.
IT IS NOT A CARPET DEFECT, but is inherent in solution dyed graphic and cut/loop patterns.

Pattern streaks and banding are visually apparent streaking in patterned carpet resulting from linear juxtaposition of pattern elements visible in both length and width direction.
IT IS NOT A CARPET DEFECT, but is inherent in solution dyed graphic and cut/loop patterns.

All Specifications subject to normal manufacturing tolerance.

**avid Hotels: Public Areas Carpet
Area Rug @ Lobby Lounge**

Product Information - IHG SPEC NO: REP-RG01

Style Number/Color	B062R c. 172
Product Type	Intrepid Broadloom
Construction	Multi-Level Pattern Cut/Loop
Fiber	CF Lextron Enviro-Green Nylon
Dye Method	100% Solution Dyed
Primary Backing	Woven Polypropylene
Backing	Actionbac

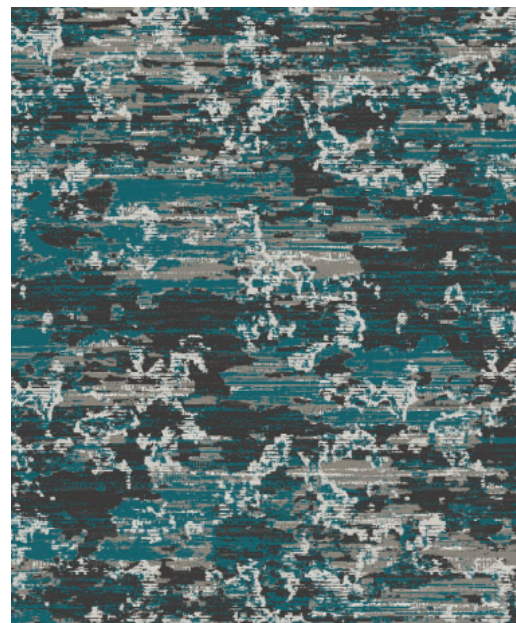
Specifications

Size	12ft. Width/Rug Size 11'10" x 11'10"
Gauge	1/10
Stitches per Inch	8
Tufted Weight	30 oz per sq/yd
Total Weight Finished	106oz
Pile Thickness	.250 in.
Total Thickness	.375 in.
Pattern Repeat	Approx. 72 in. W x 131 in. L

Performance

Traffic Class (TARR)	Moderate
Pill Test	Pass
Radiant Panel	Class I
Flammability	ASTM E 648 Class I
Smoke Density	ASTM E 662 Less than 450
LEED Info	Green Label Plus Certified - GLP2380

Warranty 10 Year Limited Warranty



Hidden Edge Binding color:

Enviro-Green yarn has 10% pre-consumer recycled content.
Recommended for heavy carpet traffic levels.

Carpet should be installed in accordance with the Carpet and Rug Institute's standard CRI-104 CRI-105. Pattern streaks and banding are visually apparent streaking in patterned carpet resulting from linear juxtaposition of pattern elements visible in both length and width direction. IT IS NOT A CARPET DEFECT, but is inherent in solution dyed graphic and cut/loop patterns.

Product Notes:

1. Specifications are subject to nominal manufacturing variances. Material supply and/or manufacturing processes may necessitate changes without notice.
Colors may vary slightly from dye lot to dye lot.
2. U.S. Patent numbers: 4,849,267; 6,406,574, US 9,988,760 B2
3. Chair pads are recommended for optimum textural performance. Absent the use of chair pads, more intensive maintenance will be required for areas in direct contact with chair caster traffic, and some degree of appearance change is to be expected.

**avid Hotels: Public Areas Carpet
Area Rug @ Lobby**

Product Information - IHG SPEC NO: REP-RG02

Style Number/Color	B062R c. 172
Product Type	Intrepid Broadloom
Construction	Multi-Level Pattern Cut/Loop
Fiber	CF Lextron Enviro-Green Nylon
Dye Method	100% Solution Dyed
Primary Backing	Woven Polypropylene
Backing	Actionbac

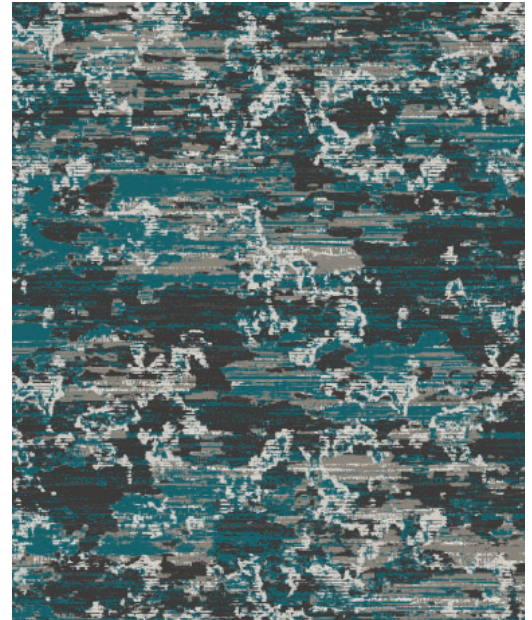
Specifications

Size	12ft. Width/Rug Size 5' x 13'
Gauge	10
Stitches per Inch	1/10
Tufted Weight	30 oz per sq/yd
Total Weight Finished	106 oz
Pile Thickness	.250 in.
Total Thickness	.375 in.
Pattern Repeat	Approx. 72 in. W x 131 in. L

Performance

Traffic Class (TARR)	Moderate
Pill Test	Pass
Radiant Panel	Class I
Flammability	ASTM E 648 Class I
Smoke Density	ASTM E 662 Less than 450
LEED Info	Green Label Plus Certified - GLP2380

Warranty 10 Year Limited Warranty



Hidden Edge Binding color:

Enviro-Green yarn has 10% pre-consumer recycled content.
Recommended for heavy carpet traffic levels.

Carpet should be installed in accordance with the Carpet and Rug Institute's standard CRI-104 CRI-105. Pattern streaks and banding are visually apparent streaking in patterned carpet resulting from linear juxtaposition of pattern elements visible in both length and width direction. IT IS NOT A CARPET DEFECT, but is inherent in solution dyed graphic and cut/loop patterns.

Product Notes:

1. Specifications are subject to nominal manufacturing variances. Material supply and/or manufacturing processes may necessitate changes without notice.
Colors may vary slightly from dye lot to dye lot.
2. U.S. Patent numbers: 4,849,267; 6,406,574, US 9,988,760 B2
3. Chair pads are recommended for optimum textural performance. Absent the use of chair pads, more intensive maintenance will be required for areas in direct contact with chair caster traffic, and some degree of appearance change is to be expected.

**avid Hotels: Resilient Wall Base
Guestroom & Public Space Areas**

Resilient Wall Base

IHG SPEC NO: REG-RB01 - Guest Room Area

Style Number **MW-32-H**
 Color 32 Pebble
 Product Type Millwork Resilient Wall Base
 Size 4.5" H x 3/8" Thick x 8' L
 Carton Size 40 LF per Carton



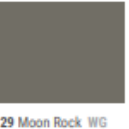
IHG SPEC NO: REP-RB01 - Lobby

Style Number **MW-29-H**
 Color 29 Moon Rock
 Product Type Millwork Resilient Wall Base
 Size 4.5" H x 3/8" Thick x 8' L
 Carton Size 40 LF per Carton



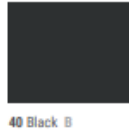
IHG SPEC NO: REP-RB04 - Heart of House: Employee Breakroom, Employee Restroom, Housekeeping Laundry, Maintenance / Engineering, Mechanical Room, Storage

Style Number **CB-29**
 Color 29 Moon Rock
 Product Type Millwork Resilient Wall Base
 Size 4" H x 1/8" Thick x 120' L
 Carton Size 120' Coil



IHG SPEC NO: REP-RB05 - Fitness Center

Style Number **MW-40-H**
 Color 40 Black
 Product Type Millwork Resilient Wall Base
 Size 4.5" H x 3/8" Thick x 8' L
 Carton Size 40 LF per Carton



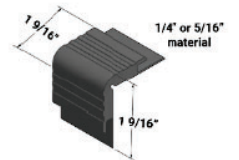
**avid Hotels: Resilient Products
Public Space Areas**

Resilient Stair Nosings

IHG SPEC NO: REP-RB02 - Stairwells

Style Number **VCD-63**
 Color 63 Burnt Umber (Use on Main Stair)
 Product Type Vinyl Stair Nose
 Size 12' L
 Carton Size 5 pieces per Carton

Style Number **VCD-VL2**
 Color VL2 Whispering Mist (Use on Top/Bottom Stair)
 Product Type Vinyl Stair Nose
 Size 12' L
 Carton Size 5 pieces per Carton

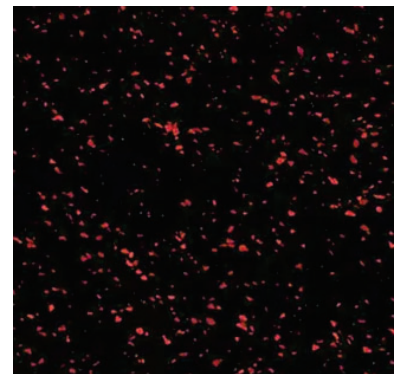


VCD-XX
 1/4" or 5/16" material
 on step and riser

Rubber Sports Flooring

IHG SPEC NO: REP-RF01- Fitness Center

Style Number **COMR-RA2**
 Color RA2 Infrared
 Product Type Recycled Composite Rubber
 Size 48" W x 50'L Roll
 Roll Size 200 sf per Roll





Tarkett Hospitality
285 Kraft Drive
Dalton, GA 30721

800.871.3211
tarketthospitality.com