



**Lexmark + Hospitality**  
800.871.3211 | [lexmarkhospitality.com](http://lexmarkhospitality.com)






# blume

*Tempt Concept Collection*

Lexmark + Hospitality



*Blush and crimson are blended with cream to create an ethereal hint of a flower without the stigma of being old fashioned and will add a fresh pop to stark modern spaces.*

+

*Vintage-inspired florals burst from a deep moody blue background creating the dramatic appeal of Blume.*

blume









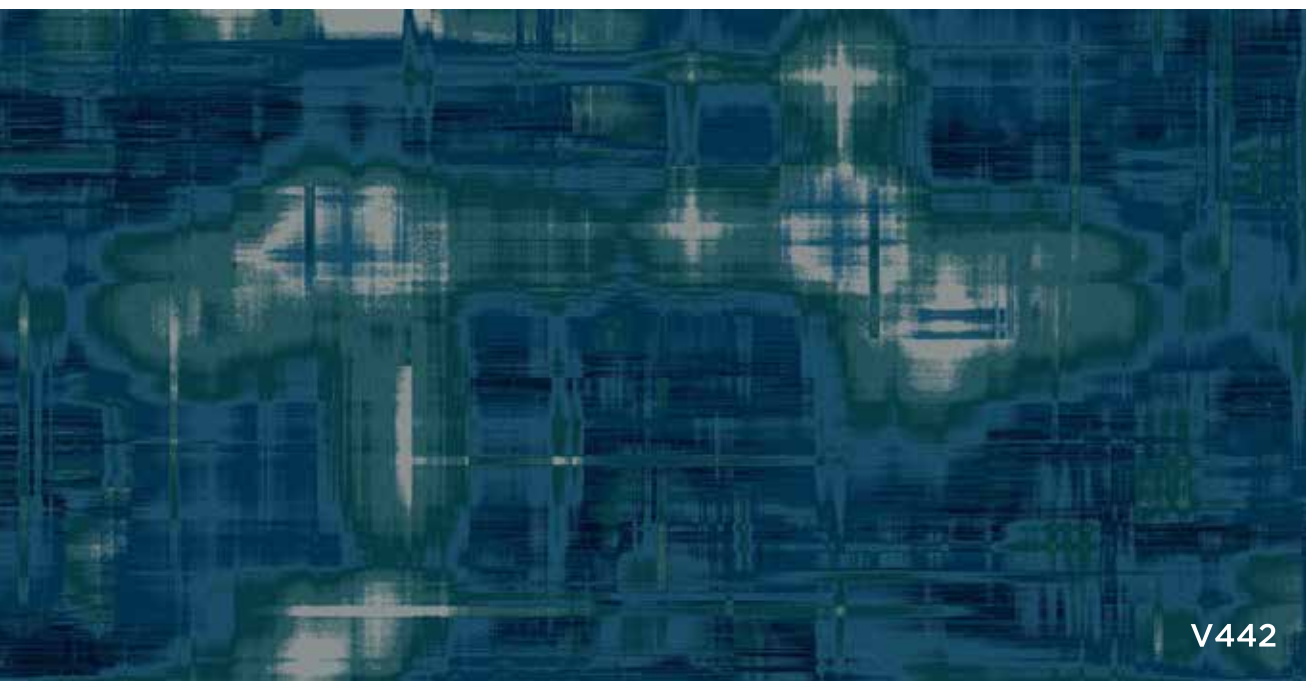




V438



V440



V442







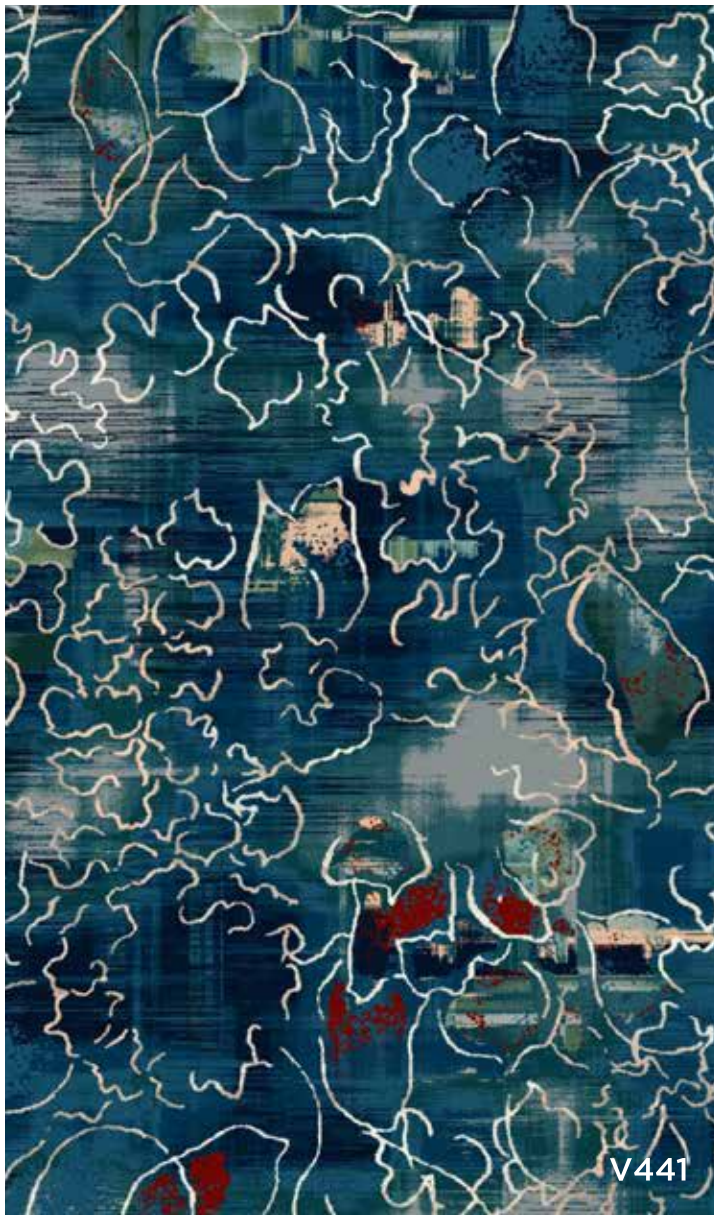








V439



V441



V550









D1589



V551





A	2041	I	8502
B	5509		
C	5510		
D	4089		
E	4007		
F	X399		
G	1502		
H	3537		

V438 BLUME I		COLOR 660
<b>Construction:</b> Vivid - Cut/Loop	<b>Primary Backing:</b> Woven Polypropylene	
<b>Fiber Content:</b> 100% Solution Dyed Nylon	<b>Secondary Backing:</b> Actionbac®	
<b>Pattern Repeat:</b> 90" x 90"	<b>Total Weight:</b> Apx. 78 oz.   sq. yd.	
<b>Tufted Pile Weight:</b> 42 oz.   sq. yd.	<b>Yarn Size:</b> 1360   2 ply	
<b>Finished Pile Height:</b> Apx. 0.2813"   0.25"   0.0625"	<b>Standard Width:</b> 15'	



A	2041	I	4003
B	5509	J	8502
C	5510		
D	4089		
E	4007		
F	X399		
G	1502		
H	3537		

V439 BLUME II		COLOR 560
<b>Construction:</b> Vivid - Cut/Loop	<b>Primary Backing:</b> Woven Polypropylene	
<b>Fiber Content:</b> 100% Solution Dyed Nylon	<b>Secondary Backing:</b> Actionbac®	
<b>Pattern Repeat:</b> 90" x 90"	<b>Total Weight:</b> Apx. 78 oz.   sq. yd.	
<b>Tufted Pile Weight:</b> 42 oz.   sq. yd.	<b>Yarn Size:</b> 1360   2 ply	
<b>Finished Pile Height:</b> Apx. 0.2813"   0.25"   0.0625"	<b>Standard Width:</b> 15'	



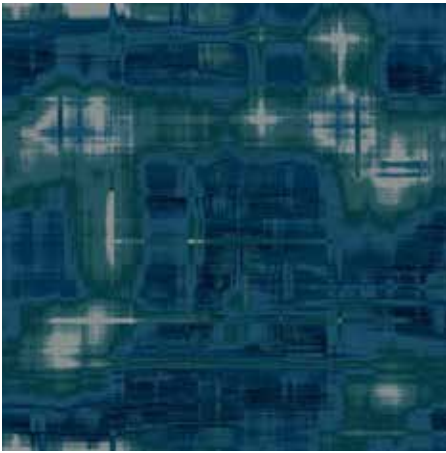
A	5509		
B	5510		
C	4089		
D	X399		
E	1502		
F	3537		
G	4003		
H	8502		

V440 BLUME III		COLOR 460
<b>Construction:</b> Vivid - Cut/Loop	<b>Primary Backing:</b> Woven Polypropylene	
<b>Fiber Content:</b> 100% Solution Dyed Nylon	<b>Secondary Backing:</b> Actionbac®	
<b>Pattern Repeat:</b> 198" x 99"	<b>Total Weight:</b> Apx. 78 oz.   sq. yd.	
<b>Tufted Pile Weight:</b> 42 oz.   sq. yd.	<b>Yarn Size:</b> 1360   2 ply	
<b>Finished Pile Height:</b> Apx. 0.2813"   0.25"   0.0625"	<b>Standard Width:</b> 15'	



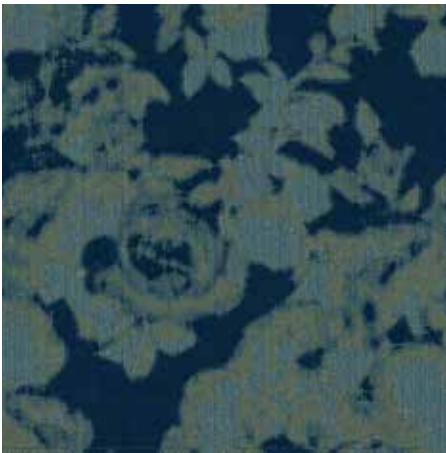
A	2041	I	4003
B	5509	J	8502
C	5510	K	4016
D	4089		
E	4007		
F	X399		
G	1502		
H	3537		

V441 BLUME IV		COLOR 360
<b>Construction:</b> Vivid - Cut/Loop	<b>Primary Backing:</b> Woven Polypropylene	
<b>Fiber Content:</b> 100% Solution Dyed Nylon	<b>Secondary Backing:</b> Actionbac®	
<b>Pattern Repeat:</b> 180" x 144"	<b>Total Weight:</b> Apx. 78 oz.   sq. yd.	
<b>Tufted Pile Weight:</b> 42 oz.   sq. yd.	<b>Yarn Size:</b> 1360   2 ply	
<b>Finished Pile Height:</b> Apx. 0.2813"   0.25"   0.0625"	<b>Standard Width:</b> 15'	



- A** 5509
- B** 5510
- C** 4089
- D** 8502

V442 BLUME V	COLOR 260
<b>Construction:</b> Vivid - Cut/Loop	<b>Primary Backing:</b> Woven Polypropylene
<b>Fiber Content:</b> 100% Solution Dyed Nylon	<b>Secondary Backing:</b> Actionbac®
<b>Pattern Repeat:</b> 180" x 90"	<b>Total Weight:</b> Apx. 78 oz.   sq. yd.
<b>Tufted Pile Weight:</b> 42 oz.   sq. yd.	<b>Yarn Size:</b> 1360   2 ply
<b>Finished Pile Height:</b> Apx. 0.2813"   0.25"   0.0625"	<b>Standard Width:</b> 15'



- A** 5510
- B** 4007
- C** 8502

D1589 BLUME VI	COLOR 160
<b>Construction:</b> Dynamics - Scroll Tip Shear	<b>Primary Backing:</b> Woven Polypropylene
<b>Fiber Content:</b> 100% Solution Dyed Nylon	<b>Secondary Backing:</b> Actionbac®
<b>Pattern Repeat:</b> 144" x 96"	<b>Total Weight:</b> Apx. 68 oz.   sq. yd.
<b>Tufted Pile Weight:</b> 32 oz.   sq. yd.	<b>Yarn Size:</b> 1360   2 ply
<b>Finished Pile Height:</b> Apx. 0.25"   0.1875"   0.0625"	<b>Standard Width:</b> 12'



- A** 2041
- B** 5509
- C** 5510
- D** 4089
- E** 4007
- F** 1502
- G** 3537
- H** 8502

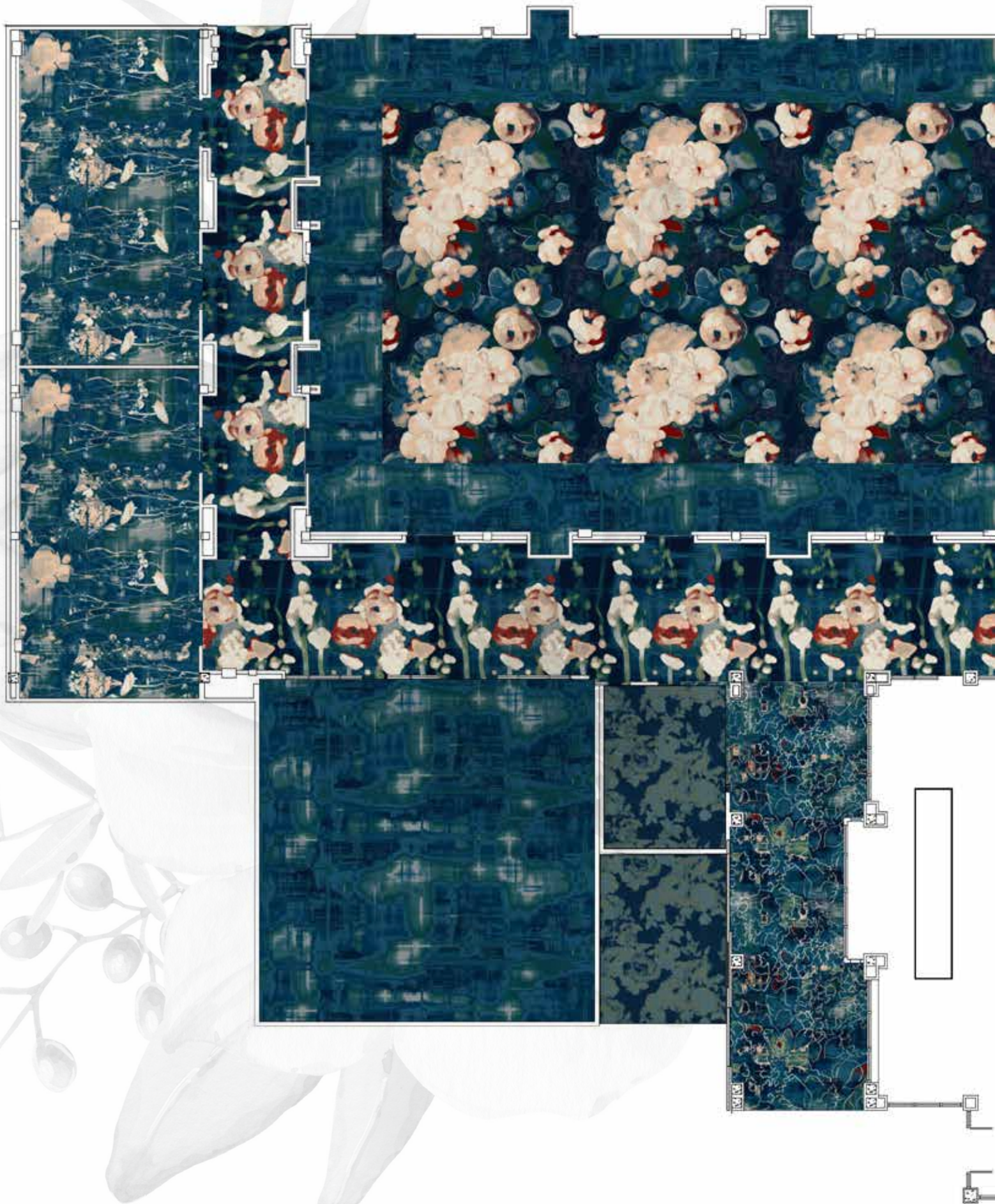
V550 BLUME VII	COLOR 760
<b>Construction:</b> Vivid - Cut/Loop	<b>Primary Backing:</b> Woven Polypropylene
<b>Fiber Content:</b> 100% Solution Dyed Nylon	<b>Secondary Backing:</b> Actionbac®
<b>Pattern Repeat:</b> 180" x 90"	<b>Total Weight:</b> Apx. 78 oz.   sq. yd.
<b>Tufted Pile Weight:</b> 42 oz.   sq. yd.	<b>Yarn Size:</b> 1360   2 ply
<b>Finished Pile Height:</b> Apx. 0.2813"   0.25"   0.0625"	<b>Standard Width:</b> 15'



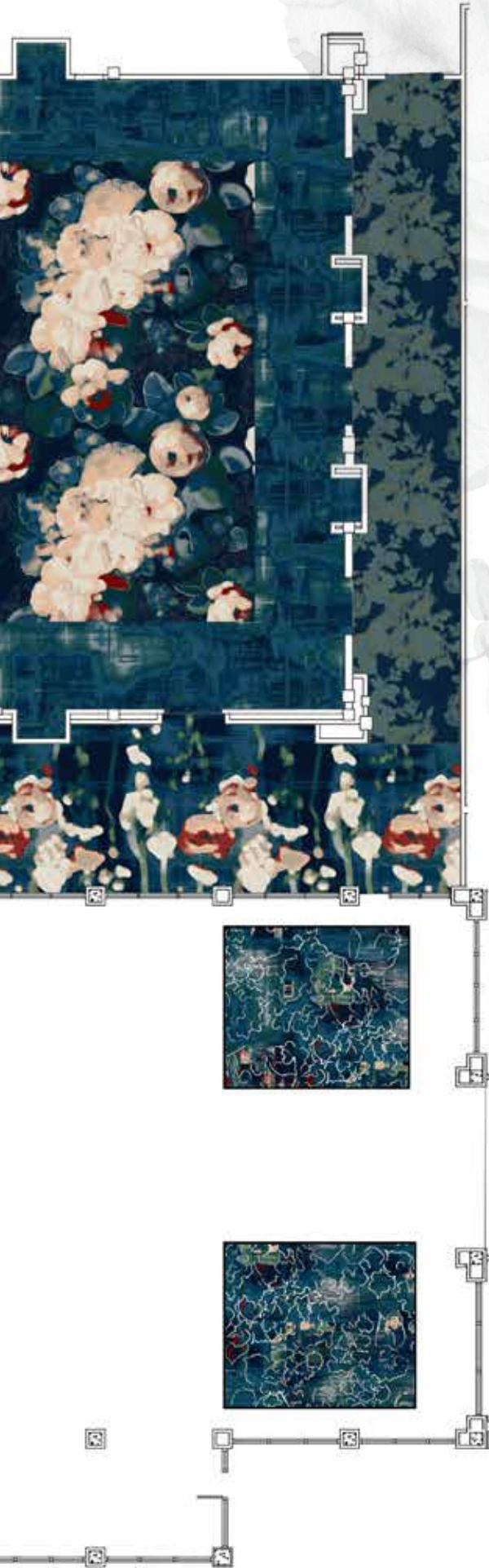
- A** 5509
- B** 5510
- C** 4089

V551 BLUME VIII	COLOR 860
<b>Construction:</b> Vivid - Cut/Loop	<b>Primary Backing:</b> Woven Polypropylene
<b>Fiber Content:</b> 100% Solution Dyed Nylon	<b>Secondary Backing:</b> Actionbac®
<b>Pattern Repeat:</b> 180" x 90"	<b>Total Weight:</b> Apx. 78 oz.   sq. yd.
<b>Tufted Pile Weight:</b> 42 oz.   sq. yd.	<b>Yarn Size:</b> 1360   2 ply
<b>Finished Pile Height:</b> Apx. 0.2813"   0.25"   0.0625"	<b>Standard Width:</b> 15'



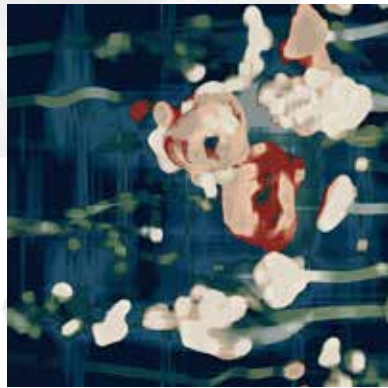






*Vintage-inspired florals burst from a deep moody blue background creating the dramatic appeal of Blume.*

*Blush and crimson are blended with cream to create an ethereal hint of a flower without the stigma of being old fashioned and will add a fresh pop to stark modern spaces.*



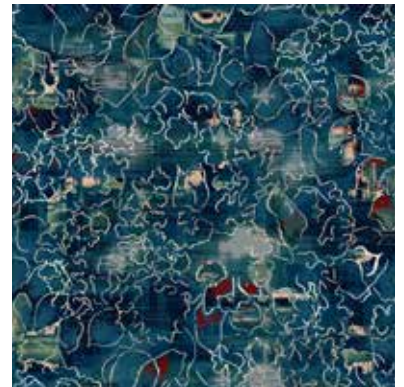
**V438**



**V439**



**V440**



**V441**



**V442**



**D1589**