



▶▶▶ INTRINSIC

Lexmark + Hospitality

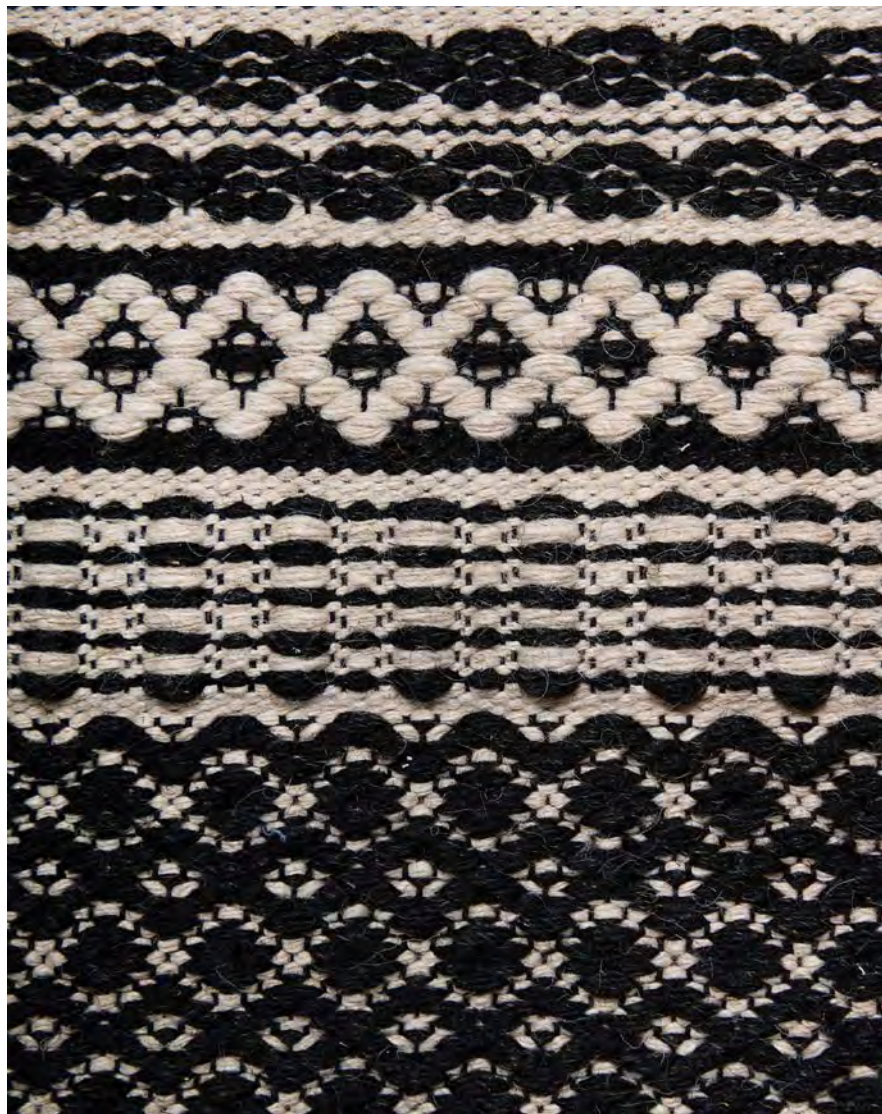
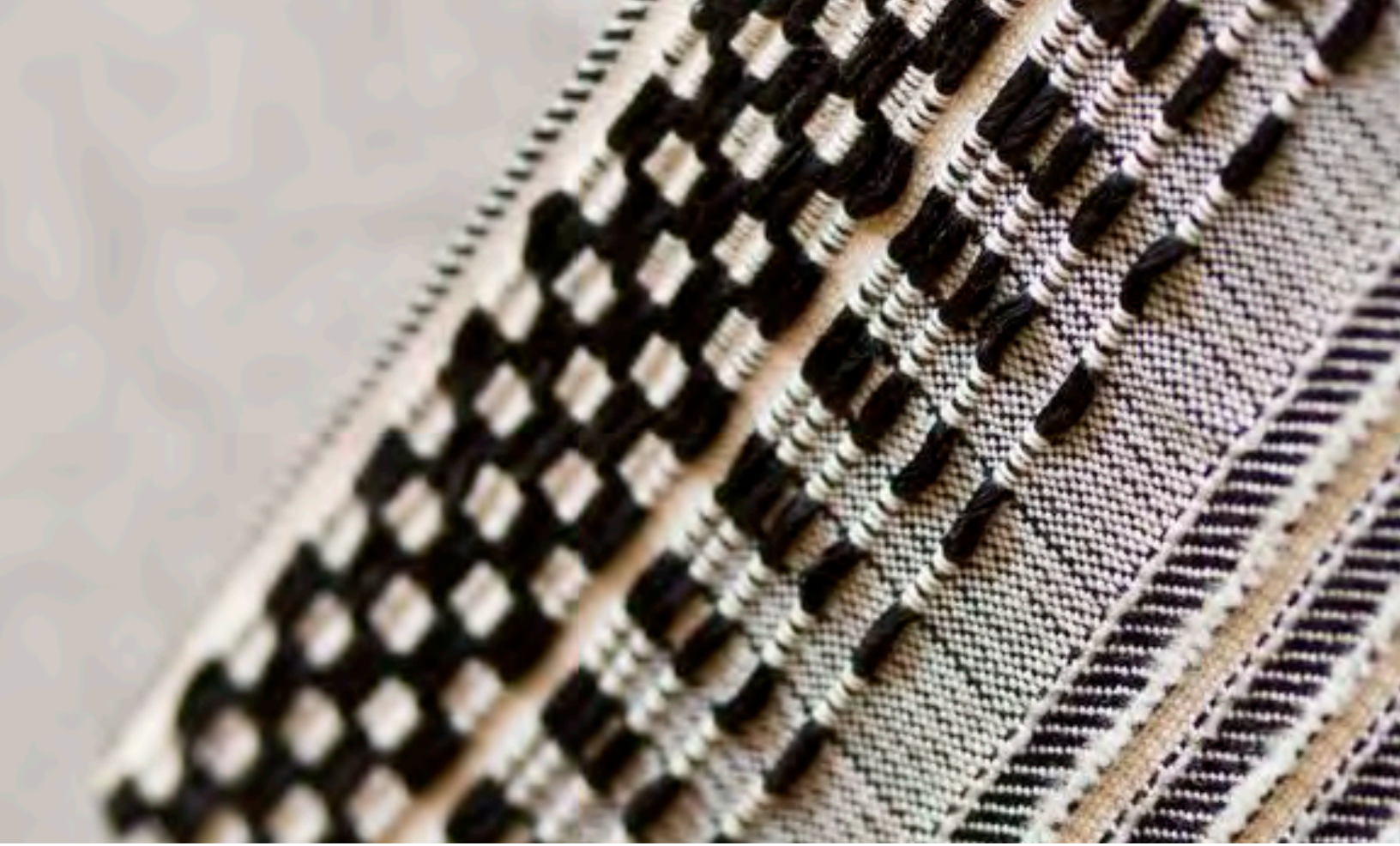
There are some ideas that seem bigger than us—like they were always there.

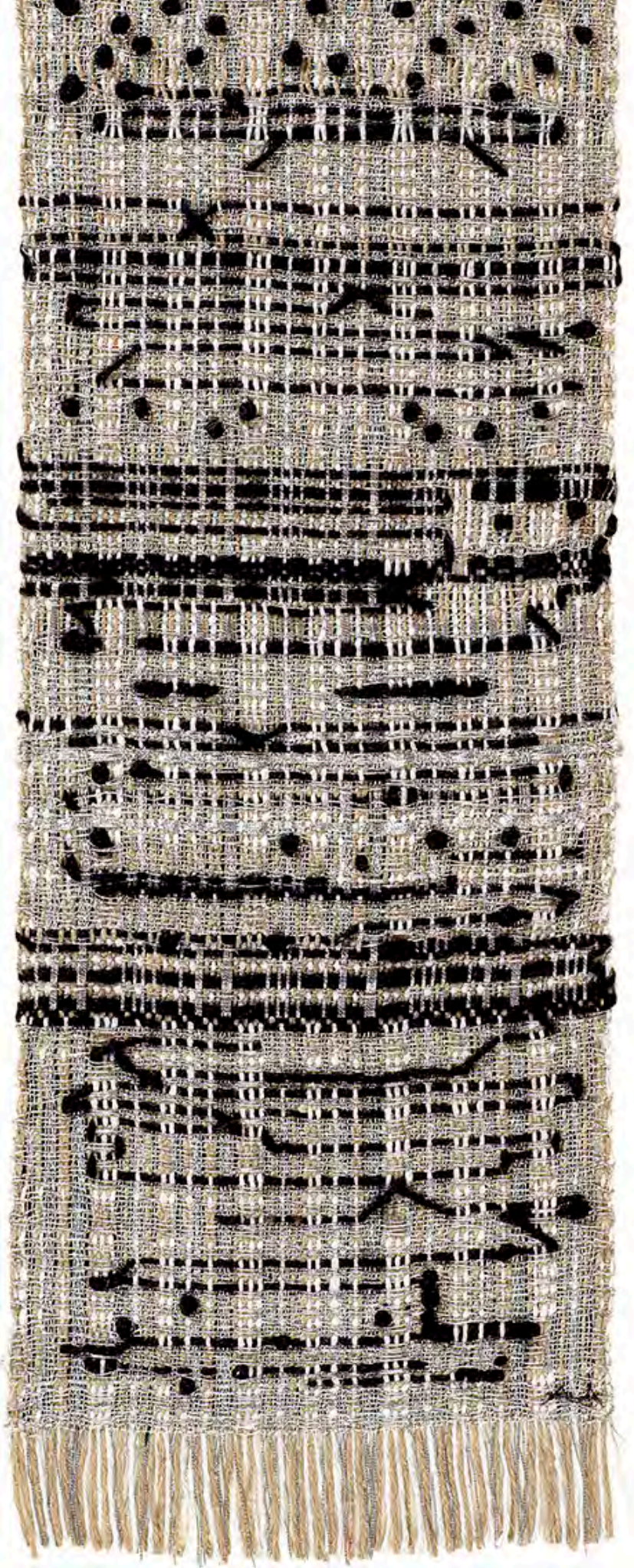
Ingrained.

Innate.

Design is no different. A sphere, a triangle, a chevron pattern—elements in design that feel so much a part of us that they are often overlooked.

Intrinsic is an homage to shapes, textures, colors and processes that have given societies art, culture and character. A celebration of these bold symbols that (re)imagines the craft of bringing them to life. ▶







DY434



V139



DY434



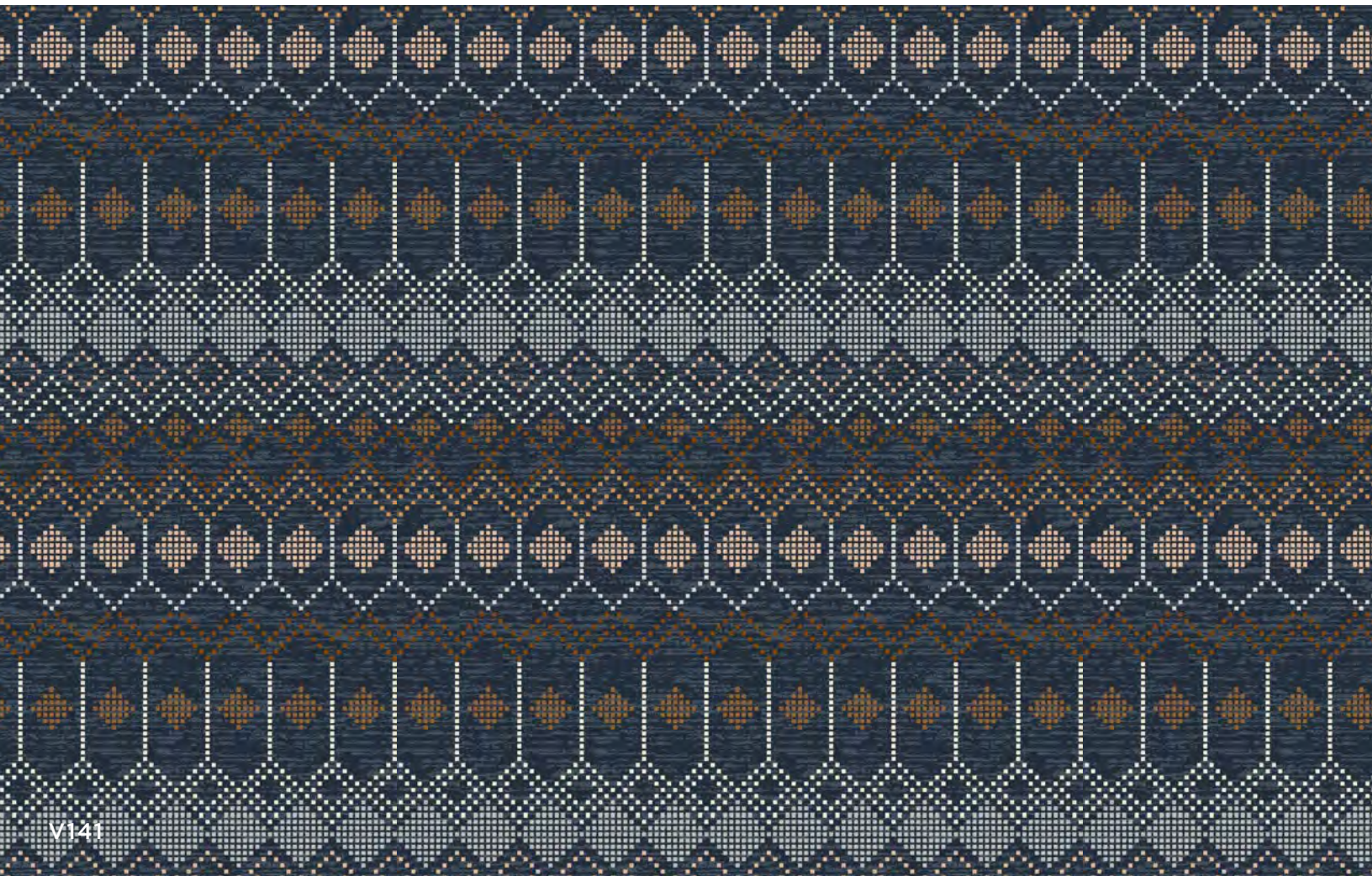
IN159



V139



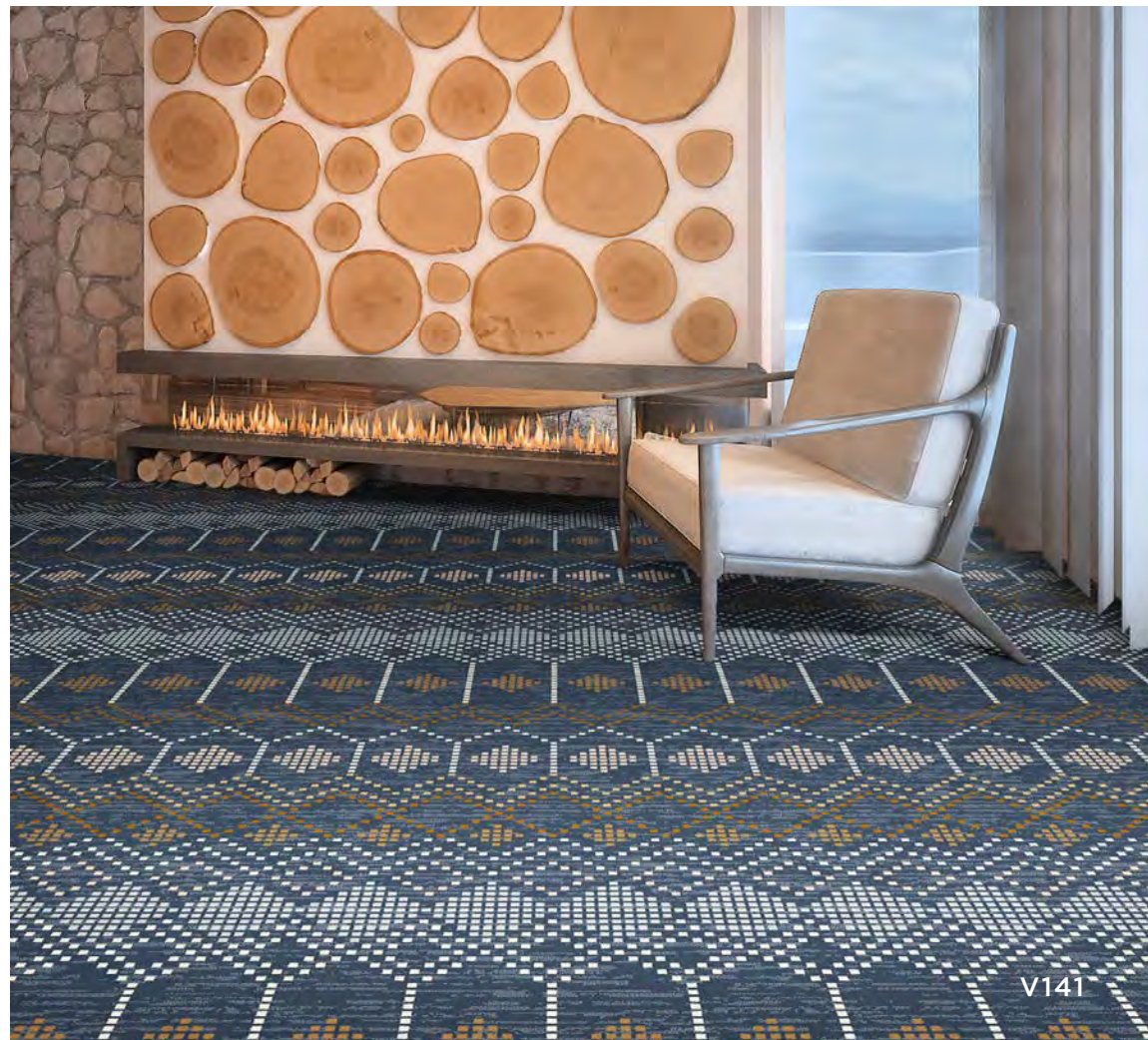
V140



V141



V140



V141



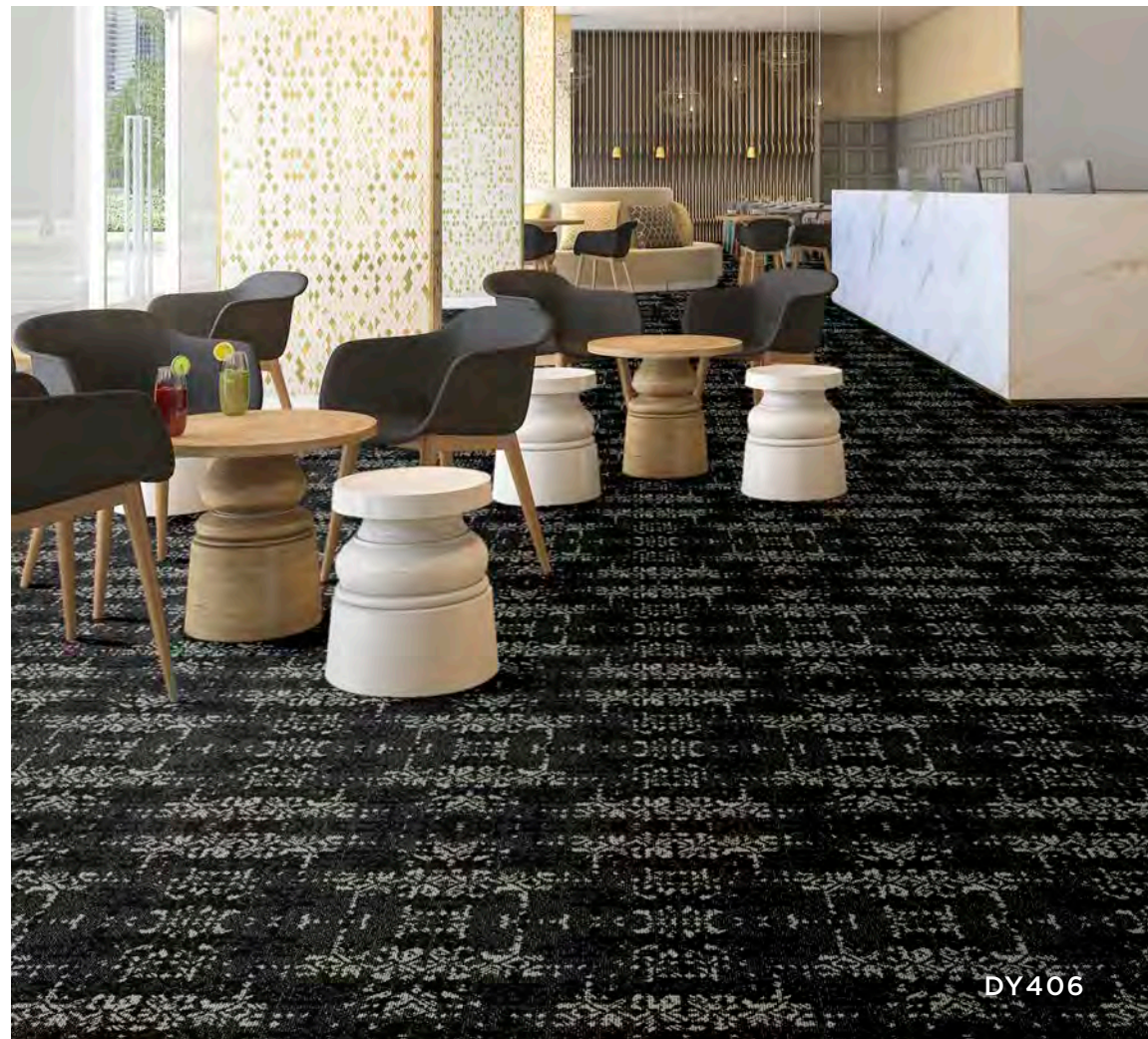
IN137



DY406



IN137



DY406



IN154



DY349



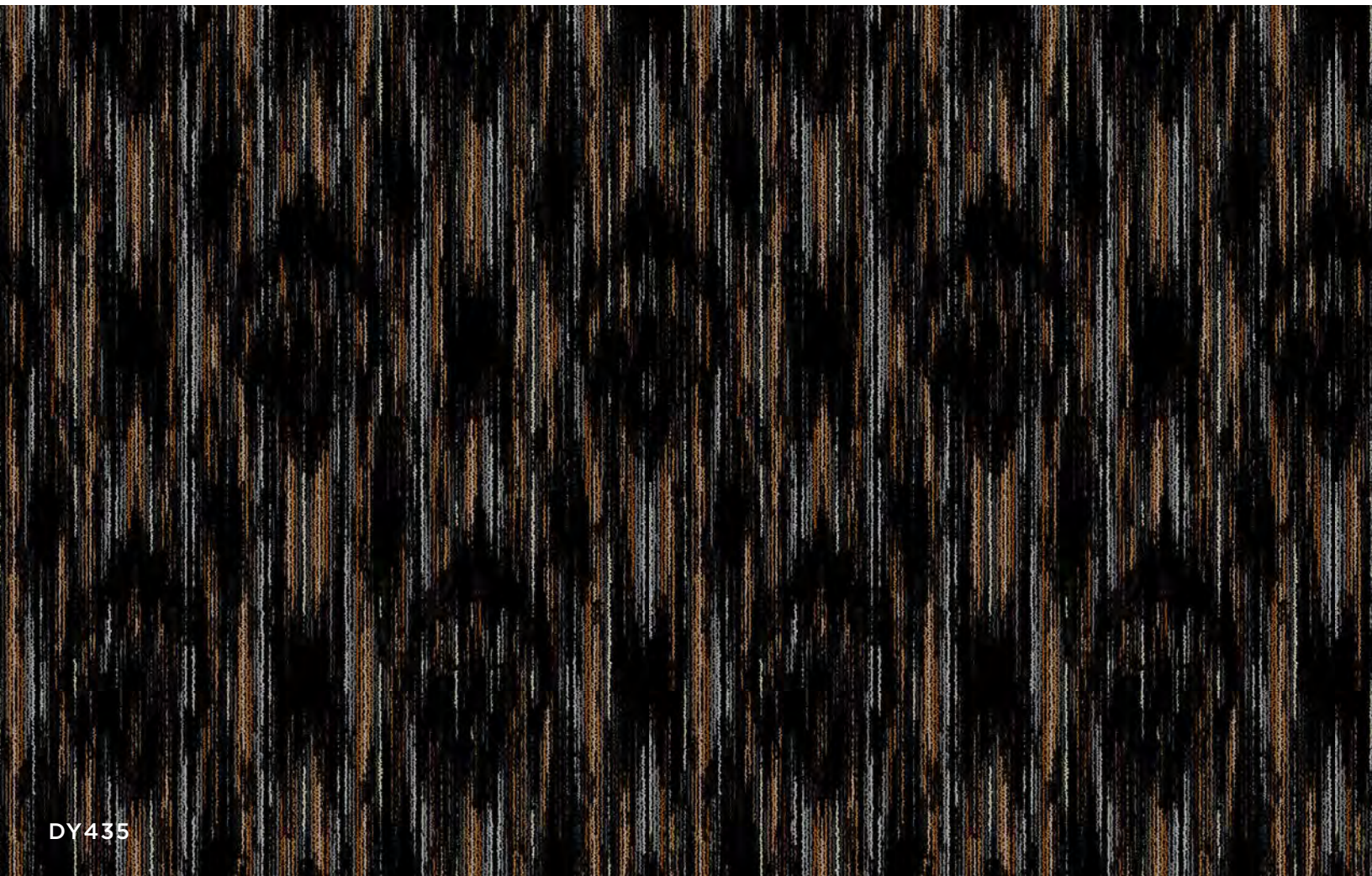
IN154



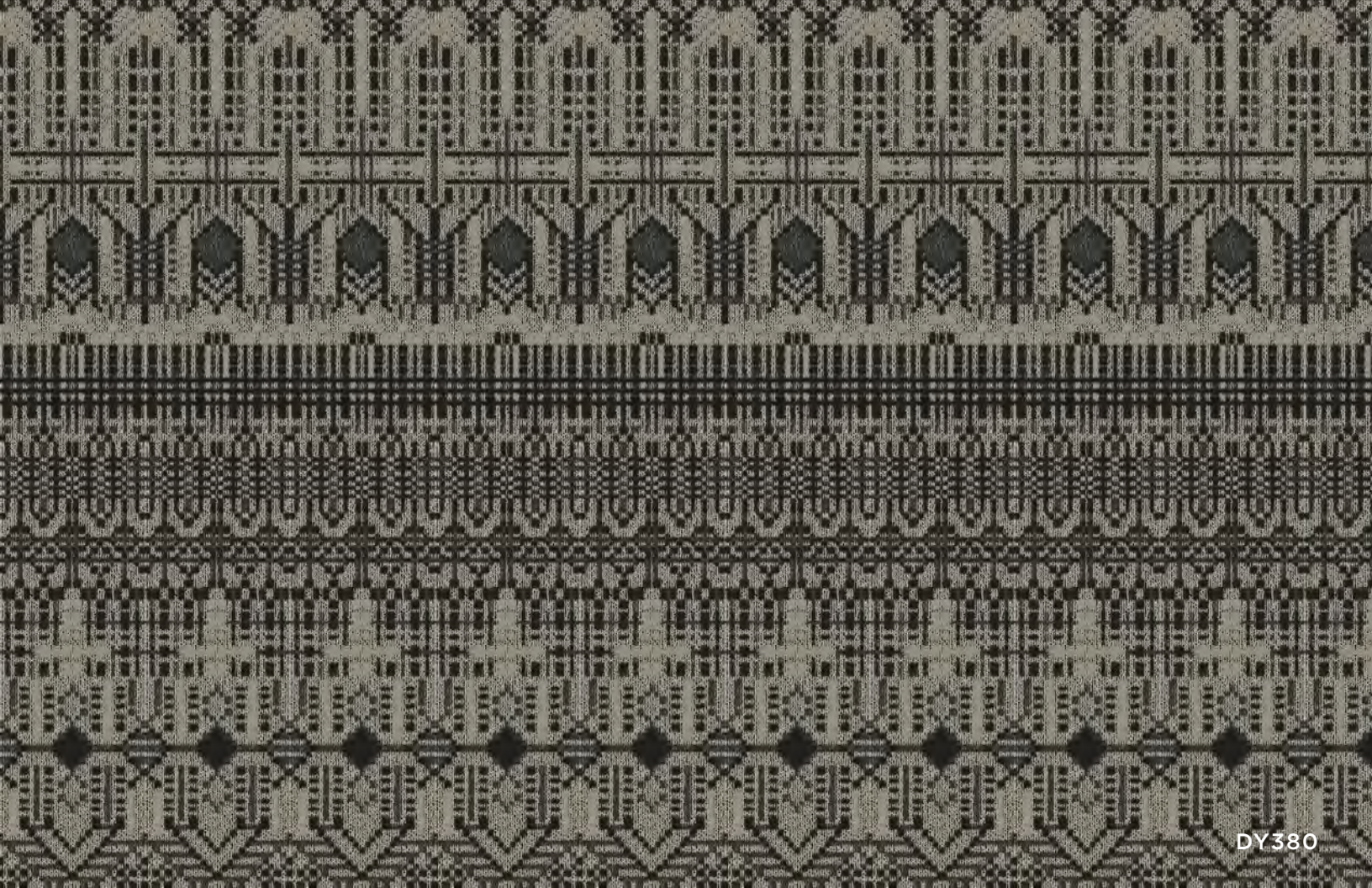
DY349



DY380



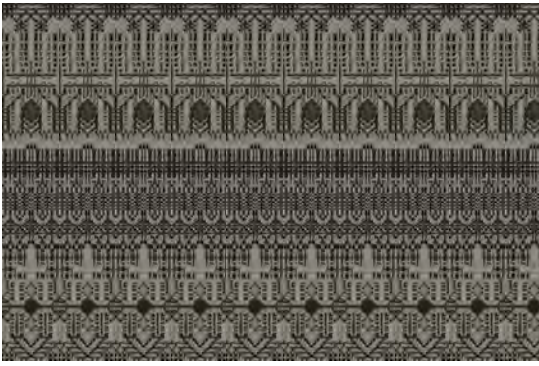
DY435



DY380



DY435



- A** 1504
- B** 8002

DY380 INTRINSIC II

Construction: Dynamics
Fiber Content: 100% Solution Dyed Nylon
Pattern Repeat: 12" x 76"
Tufted Pile Weight: 32 oz. | sq. yd.
Finished Pile Height: 0.25" | 0.1875" | 0.0625"

Primary Backing: Woven Polypropylene
Secondary Backing: Actionbac®
Total Weight: 68 oz. | sq. yd.
Yarn Size: 1360 | 2 ply
Standard Width: 12'

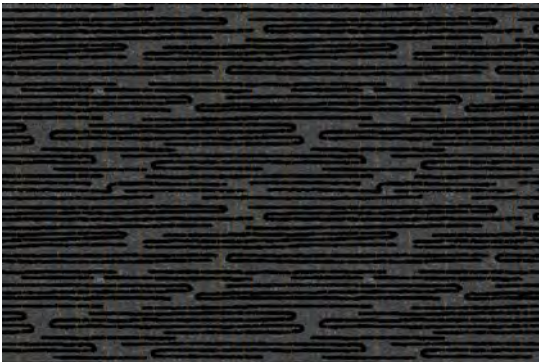


- A** 8004
- B** 3537
- C** 8533

DY434 INTRINSIC V

Construction: Dynamics
Fiber Content: 100% Solution Dyed Nylon
Pattern Repeat: 90" x 60"
Tufted Pile Weight: 32 oz. | sq. yd.
Finished Pile Height: 0.25" | 0.1875" | 0.0625"

Primary Backing: Woven Polypropylene
Secondary Backing: Actionbac®
Total Weight: 68 oz. | sq. yd.
Yarn Size: 1360 | 2 ply
Standard Width: 15'



- A** 8533
- B** 8529
- C** 3504
- D** 8002

IN154 INTRINSIC VI

Construction: Intrepid
Fiber Content: 100% Solution Dyed Nylon
Pattern Repeat: 45" x 44.5"
Tufted Pile Weight: 42 oz. | sq. yd.
Finished Pile Height: 0.25" | 0.1875" | 0.0625"

Primary Backing: Woven Polypropylene
Secondary Backing: Unitary with Actionbac®
Total Weight: 78 oz. | sq. yd.
Yarn Size: 1360 | 2 ply
Standard Width: 15'



- A** 1504
- B** 8518
- C** 8533
- D** 3009

IN137 INTRINSIC VII

Construction: Intrepid
Fiber Content: 100% Solution Dyed Nylon
Pattern Repeat: 24" x 17.4"
Tufted Pile Weight: 42 oz. | sq. yd.
Finished Pile Height: 0.25" | 0.1875" | 0.0625"

Primary Backing: Woven Polypropylene
Secondary Backing: Unitary with Actionbac®
Total Weight: 78 oz. | sq. yd.
Yarn Size: 1360 | 2 ply
Standard Width: 12'

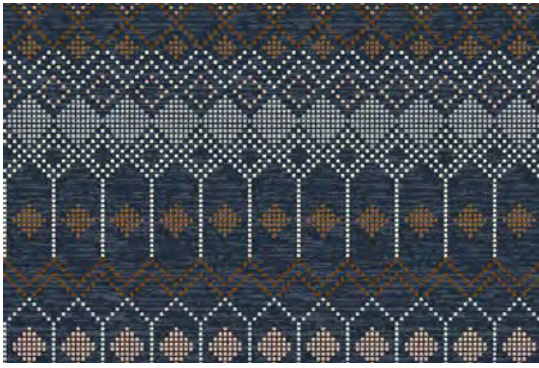


- A** 8533
- B** 3537
- C** 8518
- D** 8002

IN159 INTRINSIC VIII

Construction: Intrepid
Fiber Content: 100% Solution Dyed Nylon
Pattern Repeat: 90" x 90"
Tufted Pile Weight: 42 oz. | sq. yd.
Finished Pile Height: 0.25" | 0.1875" | 0.0625"

Primary Backing: Woven Polypropylene
Secondary Backing: Unitary with Actionbac®
Total Weight: 78 oz. | sq. yd.
Yarn Size: 1360 | 2 ply
Standard Width: 15'



- A 1504
- B 8530
- C 8533
- D 3537
- E 3009
- F 3514
- G 3504
- H 8518

V141 INTRINSIC X

Construction:
Vivid

Fiber Content:
100% Solution Dyed Nylon

Pattern Repeat:
60" x 44"

Tufted Pile Weight:
42 oz. | sq. yd.

Finished Pile Height:
0.2813" | 0.25" | 0.0625"

Primary Backing:
Woven Polypropylene

Secondary Backing:
Unitary with Actionbac®

Total Weight:
78 oz. | sq. yd.

Yarn Size:
1360 | 2 ply

Standard Width:
15'



- A 1504
- B 8530
- C 8533
- D 3537
- E 8525
- F 8518
- G 8529
- H 8002

V139 INTRINSIC XI

Construction:
Vivid

Fiber Content:
100% Solution Dyed Nylon

Pattern Repeat:
36" x 36"

Tufted Pile Weight:
42 oz. | sq. yd.

Finished Pile Height:
0.2813" | 0.25" | 0.0625"

Primary Backing:
Woven Polypropylene

Secondary Backing:
Unitary with Actionbac®

Total Weight:
78 oz. | sq. yd.

Yarn Size:
1360 | 2 ply

Standard Width:
15'



- A 1504
- B 8530
- C 8533
- D 3537
- E 3009
- F 3514
- G 3504
- H 8525
- I 8518
- J 8529

V140 INTRINSIC IX

Construction:
Vivid

Fiber Content:
100% Solution Dyed Nylon

Pattern Repeat:
45" x 72"

Tufted Pile Weight:
42 oz. | sq. yd.

Finished Pile Height:
0.2813" | 0.25" | 0.0625"

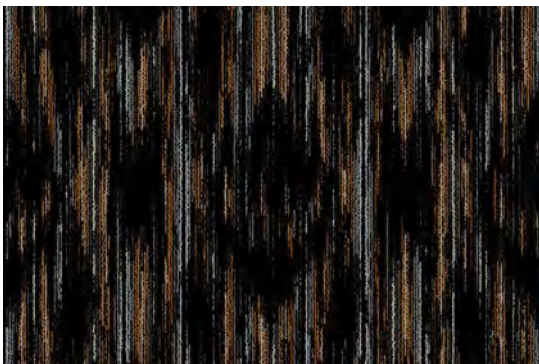
Primary Backing:
Woven Polypropylene

Secondary Backing:
Unitary with Actionbac®

Total Weight:
78 oz. | sq. yd.

Yarn Size:
1360 | 2 ply

Standard Width:
15'



- A 8002
- B 8530
- C 8533
- D 8529
- E 3504
- F 3009
- G 3537
- H 3514
- I 8525
- J 8004
- K 1504

DY435 INTRINSIC IV

Construction:
Dynamics

Fiber Content:
100% Solution Dyed Nylon

Pattern Repeat:
36" x 36"

Tufted Pile Weight:
32 oz. | sq. yd.

Finished Pile Height:
0.25" | 0.1875" | 0.0625"

Primary Backing:
Woven Polypropylene

Secondary Backing:
Actionbac®

Total Weight:
68 oz. | sq. yd.

Yarn Size:
1360 | 2 ply

Standard Width:
12'



- DY349**
- A 1504
 - B 8002



- DY406**
- A 8002
 - B 1504

DY349 INTRINSIC I + DY406 INTRINSIC III

Construction:
Dynamics

Fiber Content:
100% Solution Dyed Nylon

Pattern Repeat:
36" x 36"

Tufted Pile Weight:
32 oz. | sq. yd.

Finished Pile Height:
0.25" | 0.1875" | 0.0625"

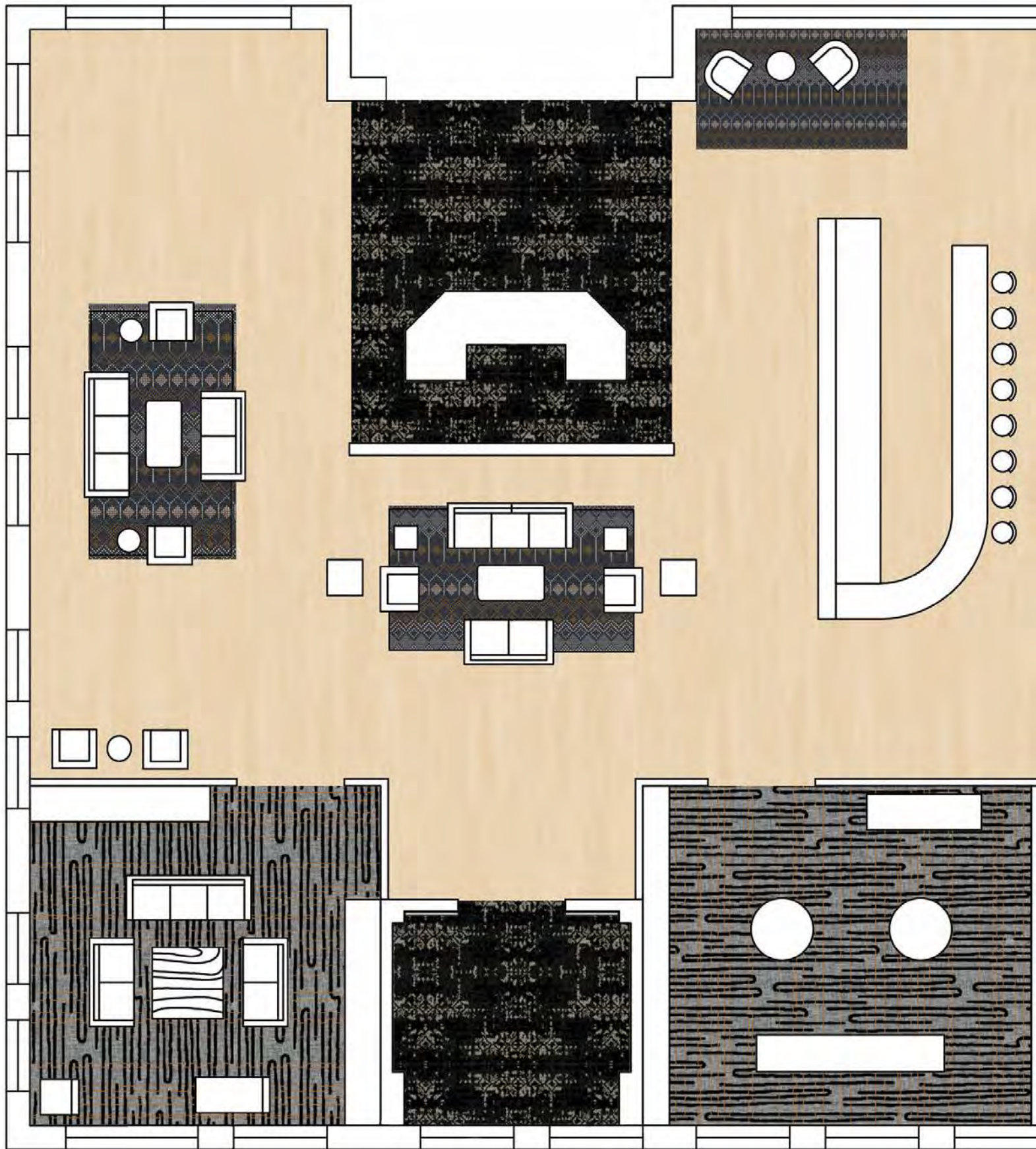
Primary Backing:
Woven Polypropylene

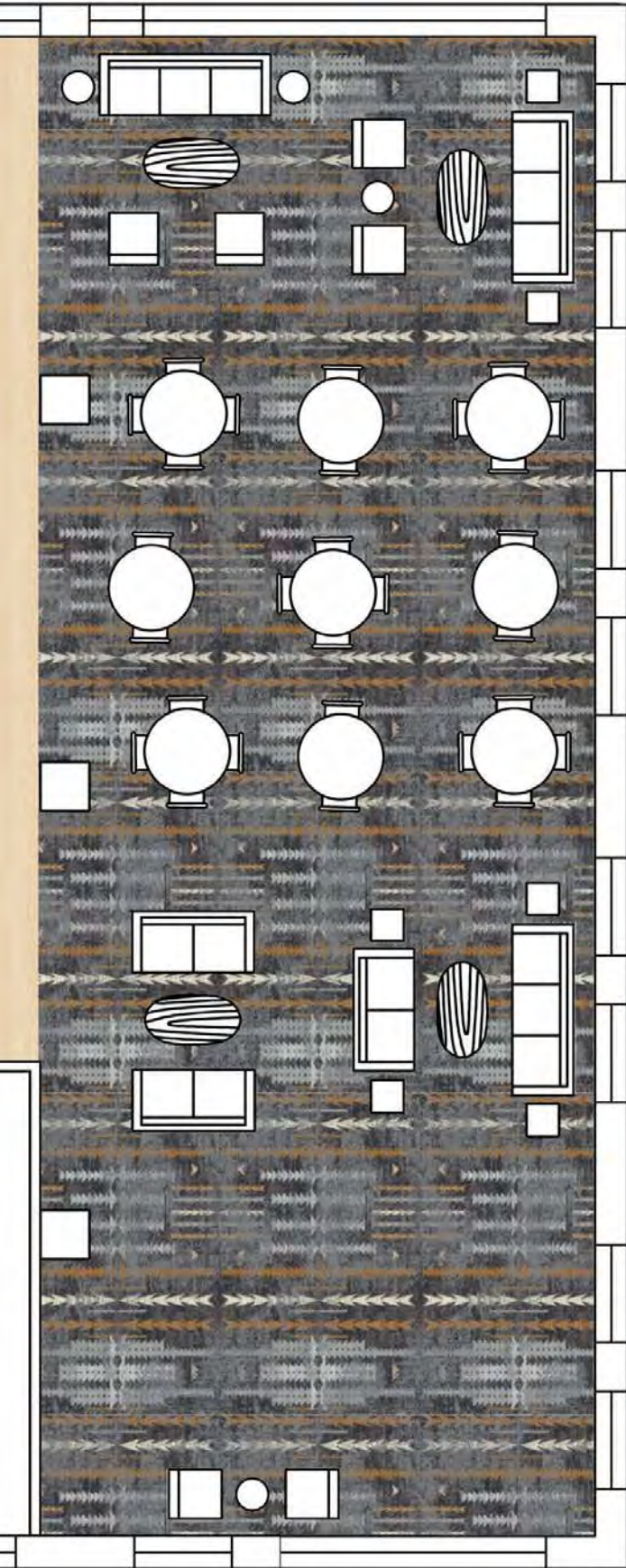
Secondary Backing:
Actionbac®

Total Weight:
68 oz. | sq. yd.

Yarn Size:
1360 | 2 ply

Standard Width:
12'





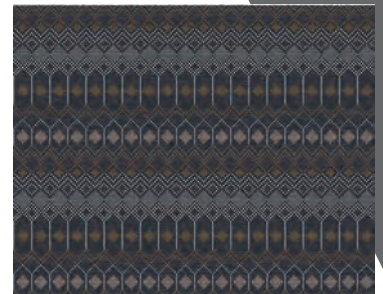
The archetypal patterns of Intrinsic may, at first glance, seem common.

But when generated with a unique voice and fashion-forward hues, we're invited to see the familiar from a fresh point of view.

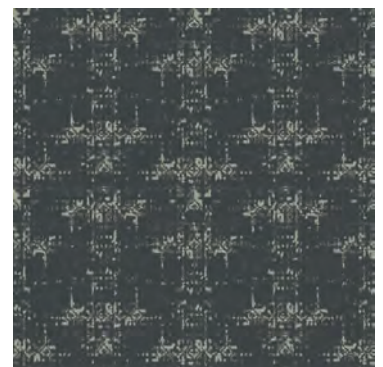
IN154



V141

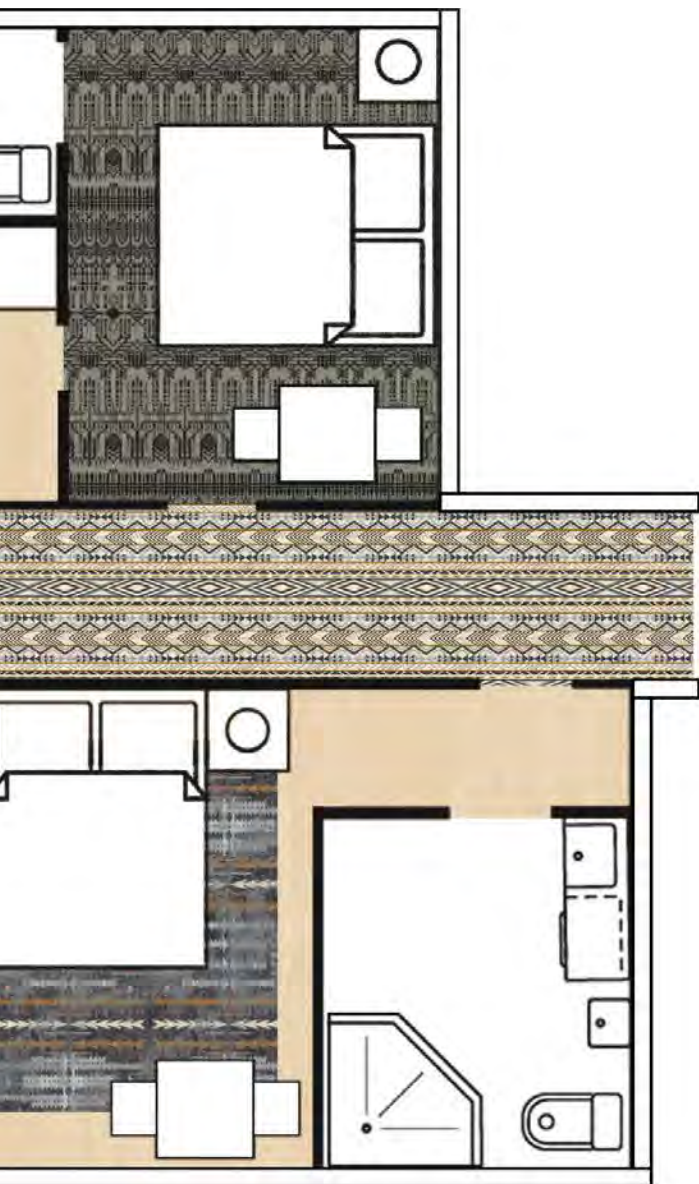


V140



DY406





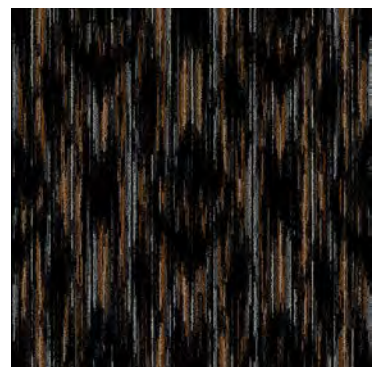
IN137




V141



V140



DY435



Lextron™ Essentials
Yarn System contains
10% pre consumer
waste. CRI Green Label
Plus indoor air quality
testing program certification
#GLP2380.

Carpet should be installed in
accordance with the Carpet and
Rug Institutes's Standard CRI-104.
Carpet must be installed over
manufacturer's recommended pad.

Pattern streaks and banding are
visually apparent streaking in patterned
carpet resulting from linear juxtaposition
of pattern elements visible in both length
and width directions. It is not a carpet
defect, but is inherent in solution dyed
graphic and cut and loop patterns.

All specifications are subject to normal
manufacturing tolerances.

Due to the manufacturing process of a tip sheared
product, the finished yarn weight will vary more than
normal manufacturing tolerances and side match
cannot be guaranteed.