



**CASCADES**  
**TEMPT COLLECTION**



# CASCADES







Nature's pattern transformed.

Soft, melding shapes form  
seemingly intolerant materials.



CORRIDOR

CASCADES

# CORRIDOR



A	B	C	D
7514	2006	2508	8522
E	F	G	H
3504	8524	8526	1504

COLOR 178

## PRODUCT SPECIFICATIONS

- Product ID: CA001
- Name: Cascades I
- Construction: Legacy Plus – 1/10 ColorTec Cut-Pile
- Fiber Content: 100% C.F. Lextron Enviro-Green® Solution Dyed Nylon
- Pattern Repeat: 90" x 144"
- Tufted Pile Weight: 40 oz./sq. yd.
- Finished Pile Height: approx. 0.250"
- Primary Backing: Woven Polypropylene
- Secondary Backing: Unitary w/Actionbac®
- Total Weight: approx. 76 oz./sq. yd.
- Yarn Size: 1360/2 ply
- Pitch: 270
- Width: 15 ft.
- Radiant Panel: Class 1
- Smoke Density: Less than 450
- Warranty: 10 Year Wear
- Traffic Class: Heavy (Corridor/Public Areas)



A	B	C	D
7503	3513	7502	3504
E	F	G	H
8523	3005	X333	3523

COLOR 146



A	B	C	D
8004	5510	4089	4504
E	F	G	H
8503	8510	8502	8520

COLOR 168







# PUBLIC SPACE

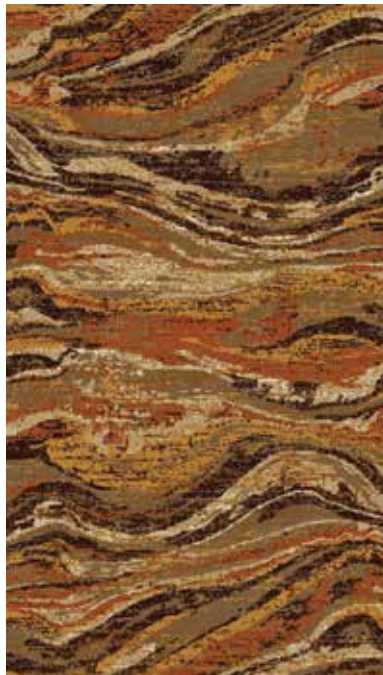


A	B	C	D
7514	2006	2508	8522
E	F	G	H
3504	8524	8526	1504

COLOR 278

## PRODUCT SPECIFICATIONS

- Product ID: CA002
- Name: Cascades II
- Construction: Legacy Plus – 1/10 ColorTec Cut-Pile
- Fiber Content: 100% C.F. Lextron Enviro-Green® Solution Dyed Nylon
- Pattern Repeat: 60" x 60"
- Tufted Pile Weight: 36 oz./sq. yd.
- Finished Pile Height: approx. 0.250"
- Primary Backing: Woven Polypropylene
- Secondary Backing: Unitary w/Actionbac®
- Total Weight: approx. 72 oz./sq. yd.
- Yarn Size: 1360/2 ply
- Pitch: 270
- Width: 15 ft.
- Radiant Panel: Class 1
- Smoke Density: Less than 450
- Warranty: 10 Year Wear
- Traffic Class: Heavy (Corridor/Public Areas)



A	B	C	D
7503	3513	7502	3504
E	F	G	H
8523	3005	X333	3523

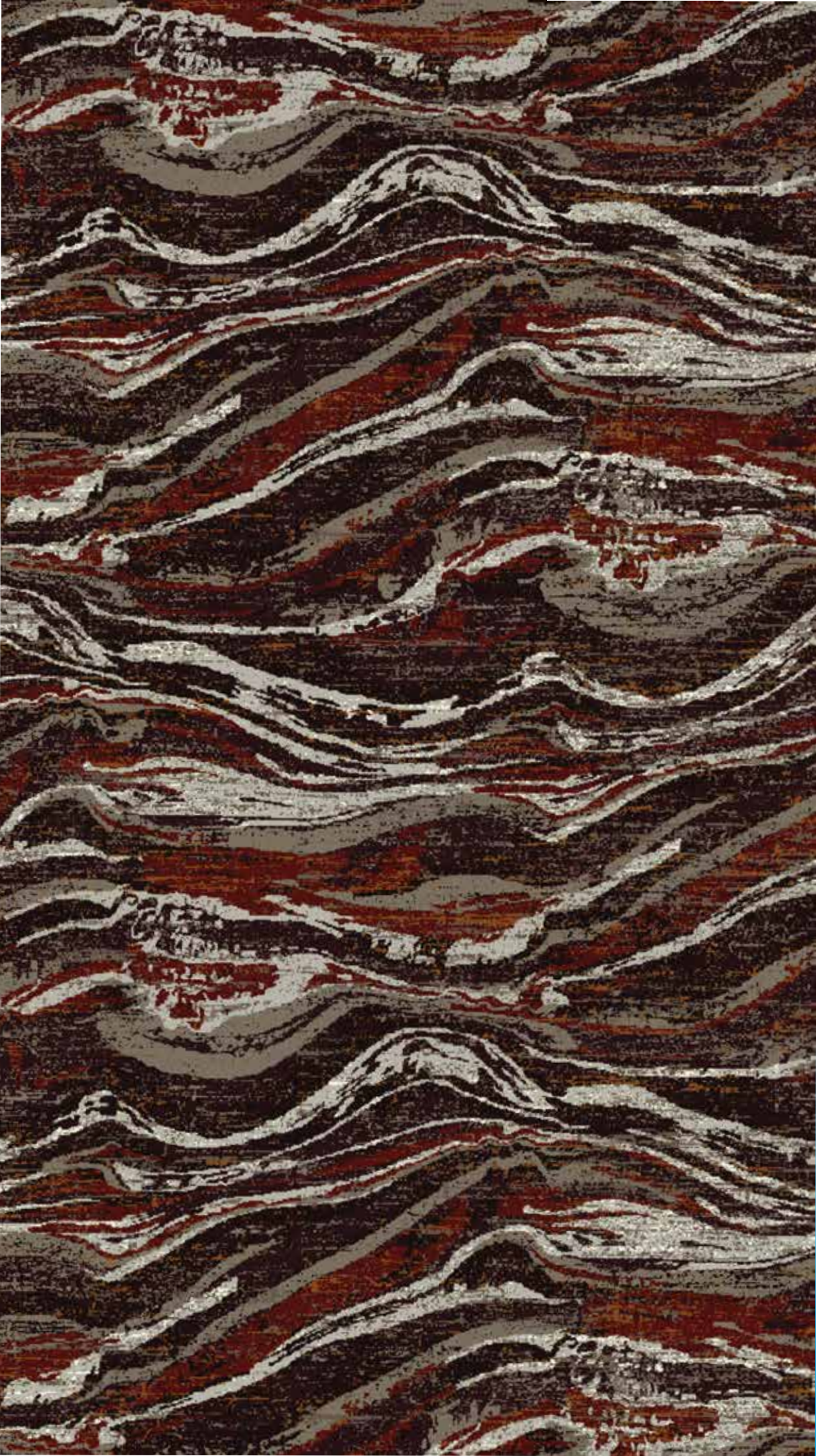
COLOR 246



A	B	C	D
8004	5510	4089	4504
E	F	G	H
8503	8510	8502	8520

COLOR 268







# PUBLIC SPACE



A  
 B  
 C  
 D  
 E  
 F  
 COLOR 278

## PRODUCT SPECIFICATIONS

- Product ID: CA003
- Name: Cascades III
- Construction: Legacy Plus - 1/10 ColorTec Cut-Pile
- Fiber Content: 100% C.F. Lextron Enviro-Green® Solution Dyed Nylon
- Pattern Repeat: 90" x 90"
- Tufted Pile Weight: 36 oz./sq. yd.
- Finished Pile Height: approx. 0.250"
- Primary Backing: Woven Polypropylene
- Secondary Backing: Unitary w/Actionbac®
- Total Weight: approx. 72 oz./sq. yd.
- Yarn Size: 1360/2 ply
- Pitch: 270
- Width: 15 ft.
- Radiant Panel: Class 1
- Smoke Density: Less than 450
- Warranty: 10 Year Wear
- Traffic Class: Heavy (Corridor/Public Areas)



A  
 B  
 C  
 D  
 E  
 F  
 COLOR 246



A  
 B  
 C  
 D  
 E  
 F  
 COLOR 268







# TRANSITION



COLOR 378

## PRODUCT SPECIFICATIONS

Product ID: CA004

Name: Cascades IV

Construction: Legacy Plus - 1/10 ColorTec Cut-Pile

Fiber Content: 100% C.F. Lextron Enviro-Green®  
Solution Dyed Nylon

Pattern Repeat: 36" x 36"

Tufted Pile Weight: 40 oz./sq. yd.

Finished Pile Height: approx. 0.250"

Primary Backing: Woven Polypropylene

Secondary Backing: Unitary w/Actionbac®

Total Weight: approx. 76 oz./sq. yd.

Yarn Size: 1360/2 ply

Pitch: 270

Width: 15 ft.

Radiant Panel: Class 1

Smoke Density: Less than 450

Warranty: 10 Year Wear

Traffic Class: Heavy (Corridor/Public Areas)

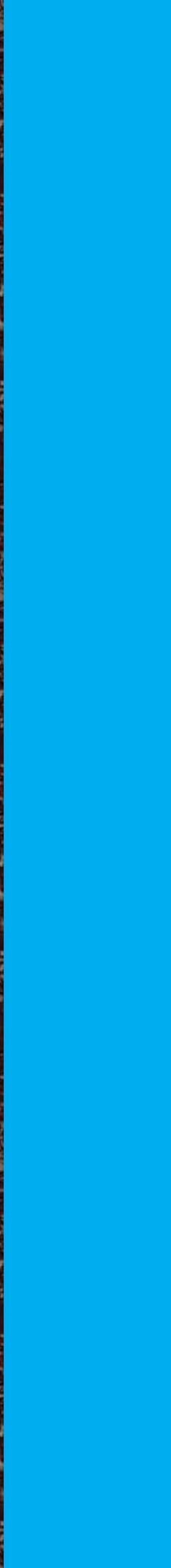


COLOR 346



COLOR 368







# GUESTROOM



COLOR 478

## PRODUCT SPECIFICATIONS

Product ID: CA005

Name: Structure

Construction: Dynamics – Servo-Loop Scroll Tip Shear

Fiber Content: 100% C.F. Lextron Enviro-Green®  
Solution Dyed Nylon

Pattern Repeat: 90" x 120"

Tufted Pile Weight: 32 oz./sq. yd.

Finished Pile Height: approx. 0.250"/0.187"/0.062"

Primary Backing: Woven Polypropylene

Secondary Backing: Actionbac®

Total Weight: approx. 68 oz./sq. yd.

Yarn Size: 1360/2 ply

Gauge: 1/10

Width: 15 ft.

Radiant Panel: Class 1

Smoke Density: Less than 450

Warranty: 10 Year Wear

Traffic Class: Moderate (Guestrooms)

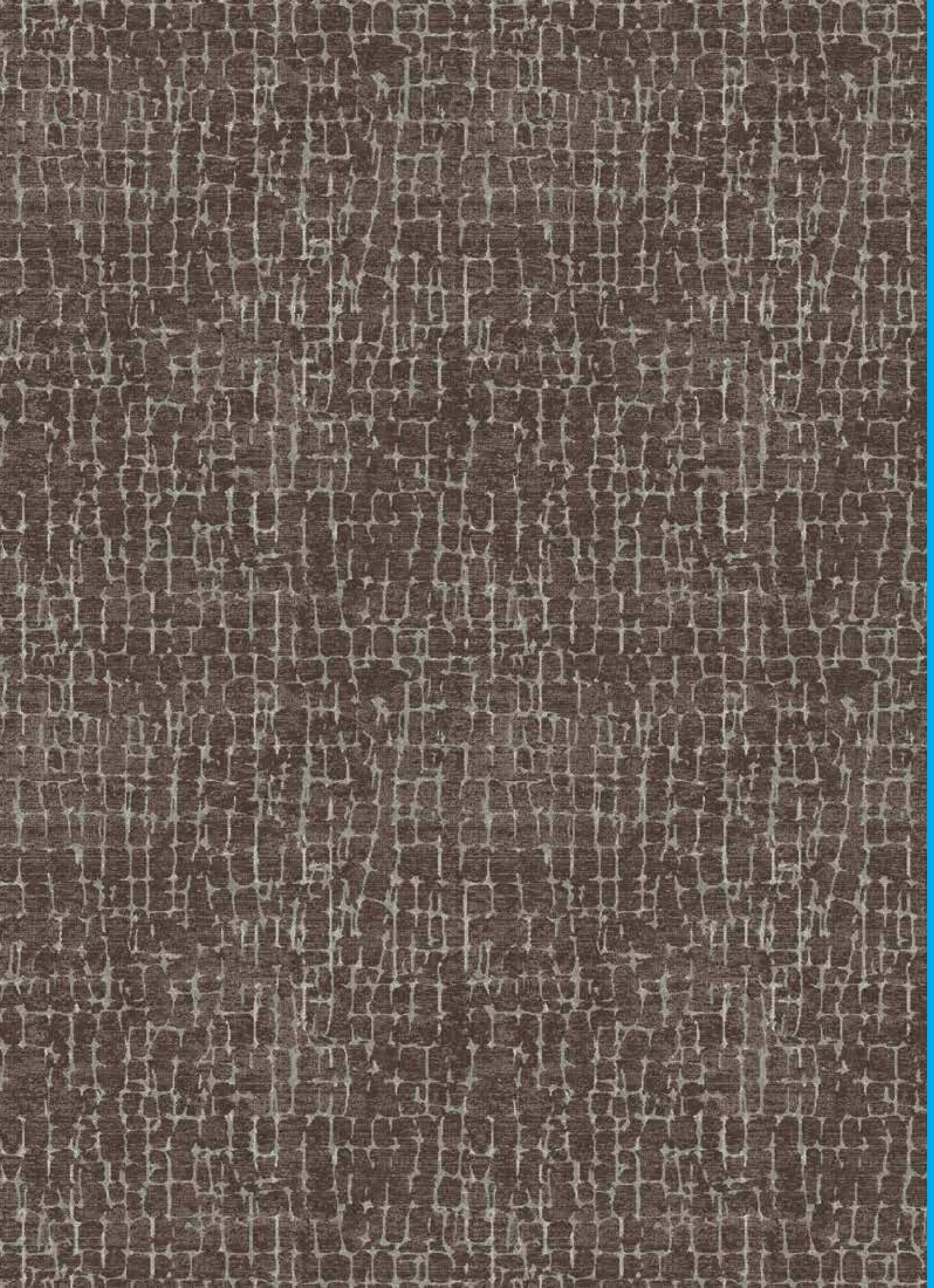


COLOR 446



COLOR 468







# GUESTROOM



COLOR 478

## PRODUCT SPECIFICATIONS

- Product ID: CA006
- Name: Sundown
- Construction: Dynamics – Servo-Loop Scroll Tip Shear
- Fiber Content: 100% C.F. Lextron Enviro-Green® Solution Dyed Nylon
- Pattern Repeat: 24" x 48"
- Tufted Pile Weight: 32 oz./sq. yd.
- Finished Pile Height: approx. 0.250"/0.187"/0.062"
- Primary Backing: Woven Polypropylene
- Secondary Backing: Actionbac®
- Total Weight: approx. 68 oz./sq. yd.
- Yarn Size: 1360/2 ply
- Gauge: 1/10
- Width: 12 ft.
- Radiant Panel: Class 1
- Smoke Density: Less than 450
- Warranty: 10 Year Wear
- Traffic Class: Moderate (Guestrooms)



COLOR 446



COLOR 468







Lextron Enviro Green® contains 10% pre consumer waste. CRI Green Label Plus indoor air quality testing program certification # GLP2380.

Carpet should be installed in accordance with the Carpet and Rug Institute's Standard CRI-104. Carpet must be installed over manufacturer's recommended pad.

Pattern streaks and banding are visually apparent streaking in patterned carpet resulting from linear juxtaposition of pattern elements visible in both length and width directions. It is not a carpet defect, but is inherent in solution dyed graphic and cut and loop patterns.

All specifications are subject to normal manufacturing tolerances.

Due to the manufacturing process of a tip sheared product, the finished yarn weight will vary more than normal manufacturing tolerances and side match cannot be guaranteed.