



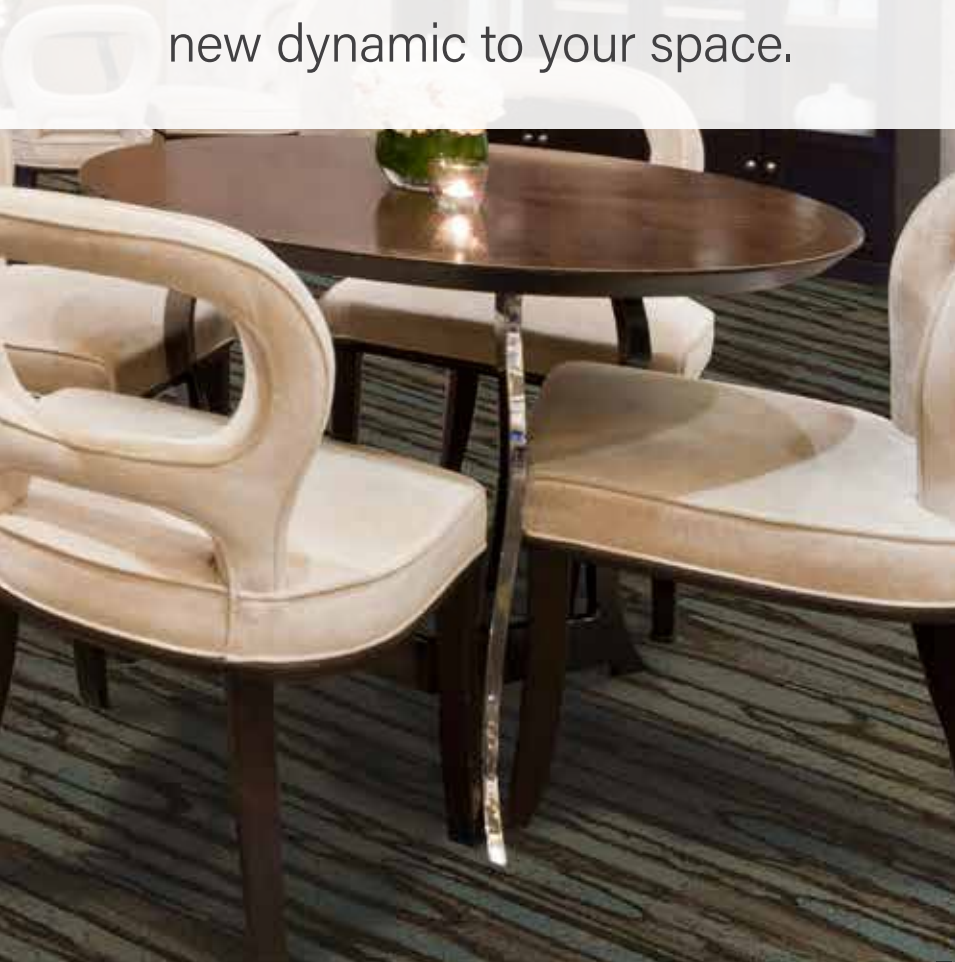
COMPOSITION TEMPT COLLECTION

COMPOSITION





The freshness of plant structures meets the weathering of metal with rust in reawakening textures that will bring a new dynamic to your space.



CORRIDOR

CORRIDOR

COMPOSITION



PRODUCT SPECIFICATIONS

Product ID:	CM001
Name:	Composition
Construction:	Vivid - 12 Color Cut/Loop CYP
Fiber Content:	100% C.F. Lextron Enviro-Green® Solution Dyed Nylon
Pattern Repeat:	90" x 90"
Tufted Pile Weight:	42 oz./sq. yd.
Finished Pile Height:	approx. 0.250"/0.187"/0.062"
Primary Backing:	Woven Polypropylene
Secondary Backing:	Unitary w/Actionbac®
Total Weight:	approx. 78 oz./sq. yd.
Yarn Size:	1360/2 ply
Guage:	1/10
Width:	15 ft.
Radiant Panel:	Class 1
Smoke Density:	Less than 450
Warranty:	10 Year Wear
Traffic Class:	Heavy (Corridor/Public Areas)



COLOR 168



CORRIDOR



COLOR 168

PRODUCT SPECIFICATIONS

Product ID: CM002

Name: Composition II

Construction: Vivid - 12 Color Cut/Loop CYP

Fiber Content: 100% C.F. Lextron Enviro-Green®
Solution Dyed Nylon

Pattern Repeat: 90" x 180"

Tufted Pile Weight: 42 oz./sq. yd.

Finished Pile Height: approx. 0.250"/0.187"/0.062"

Primary Backing: Woven Polypropylene

Secondary Backing: Unitary w/Actionbac®

Total Weight: approx. 78 oz./sq. yd.

Yarn Size: 1360/2 ply

Gauge: 1/10

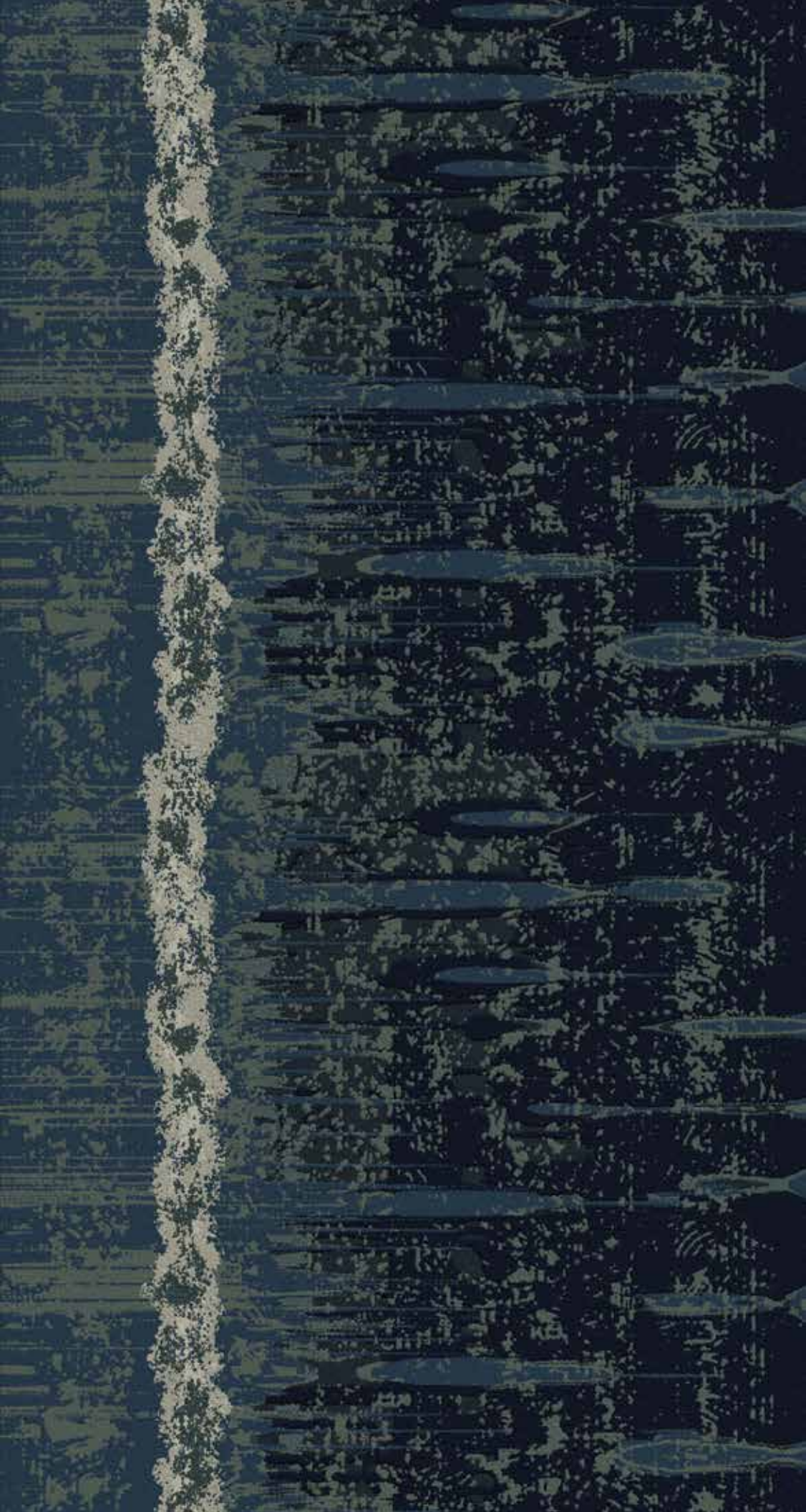
Width: 15 ft.

Radiant Panel: Class 1

Smoke Density: Less than 450

Warranty: 10 Year Wear

Traffic Class: Heavy (Corridor/Public Areas)



CORRIDOR



COLOR 168

PRODUCT SPECIFICATIONS

Product ID: CM003

Name: Composition III

Construction: Vivid - 12 Color Cut/Loop CYP

Fiber Content: 100% C.F. Lextron Enviro-Green®
Solution Dyed Nylon

Pattern Repeat: 90" x 180"

Tufted Pile Weight: 42 oz./sq. yd.

Finished Pile Height: approx. 0.250"/0.187"/0.062"

Primary Backing: Woven Polypropylene

Secondary Backing: Unitary w/Actionbac®

Total Weight: approx. 78 oz./sq. yd.

Yarn Size: 1360/2 ply

Gauge: 1/10

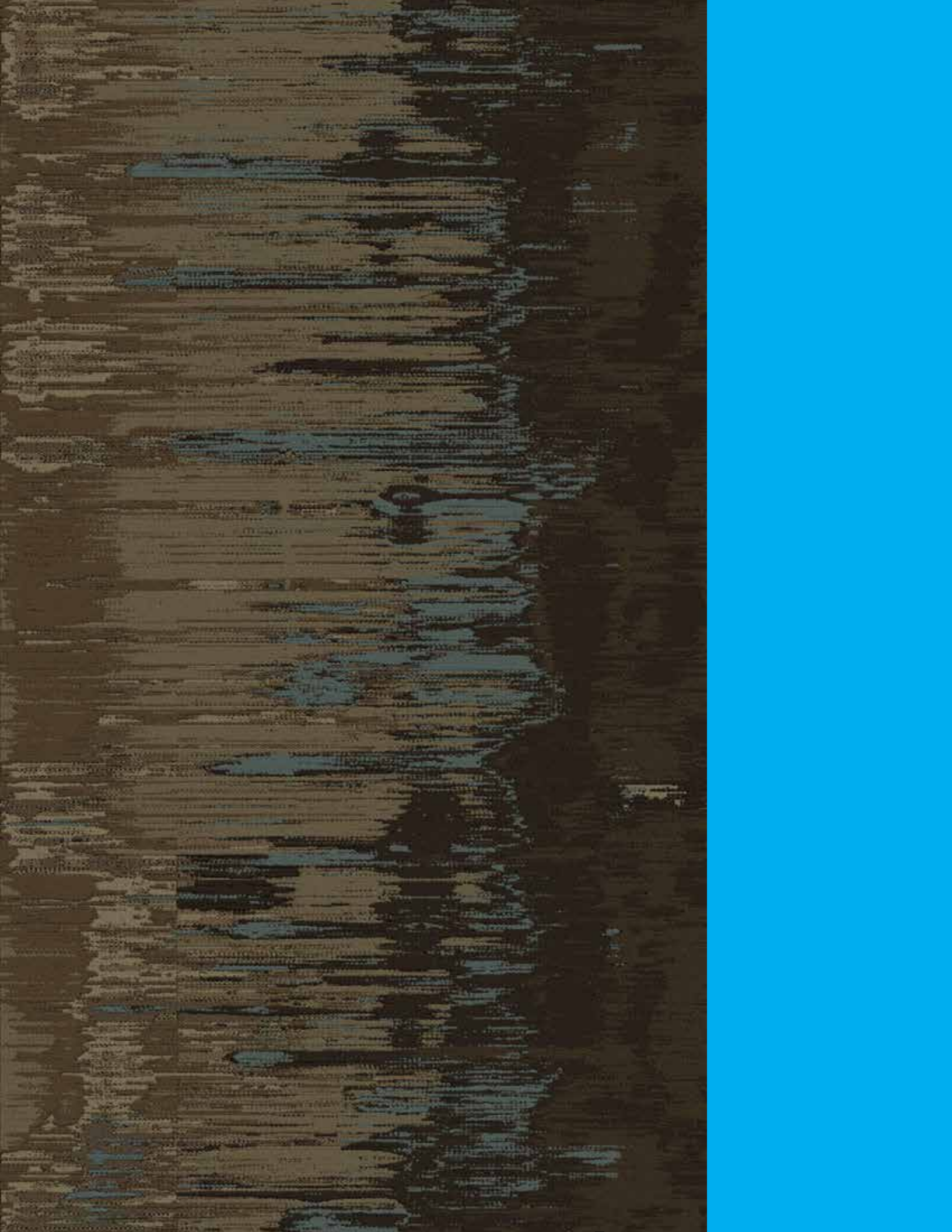
Width: 15 ft.

Radiant Panel: Class 1

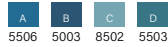
Smoke Density: Less than 450

Warranty: 10 Year Wear

Traffic Class: Heavy (Corridor/Public Areas)



PUBLIC SPACE



COLOR 268

PRODUCT SPECIFICATIONS

Product ID: CM004

Name: Composition IV

Construction: Vivid - 12 Color Cut/Loop CYP

Fiber Content: 100% C.F. Lextron Enviro-Green®
Solution Dyed Nylon

Pattern Repeat: 90" x 90"

Tufted Pile Weight: 42 oz./sq. yd.

Finished Pile Height: approx. 0.250"/0.187"/0.062"

Primary Backing: Woven Polypropylene

Secondary Backing: Unitary w/Actionbac®

Total Weight: approx. 78 oz./sq. yd.

Yarn Size: 1360/2 ply

Gauge: 1/10

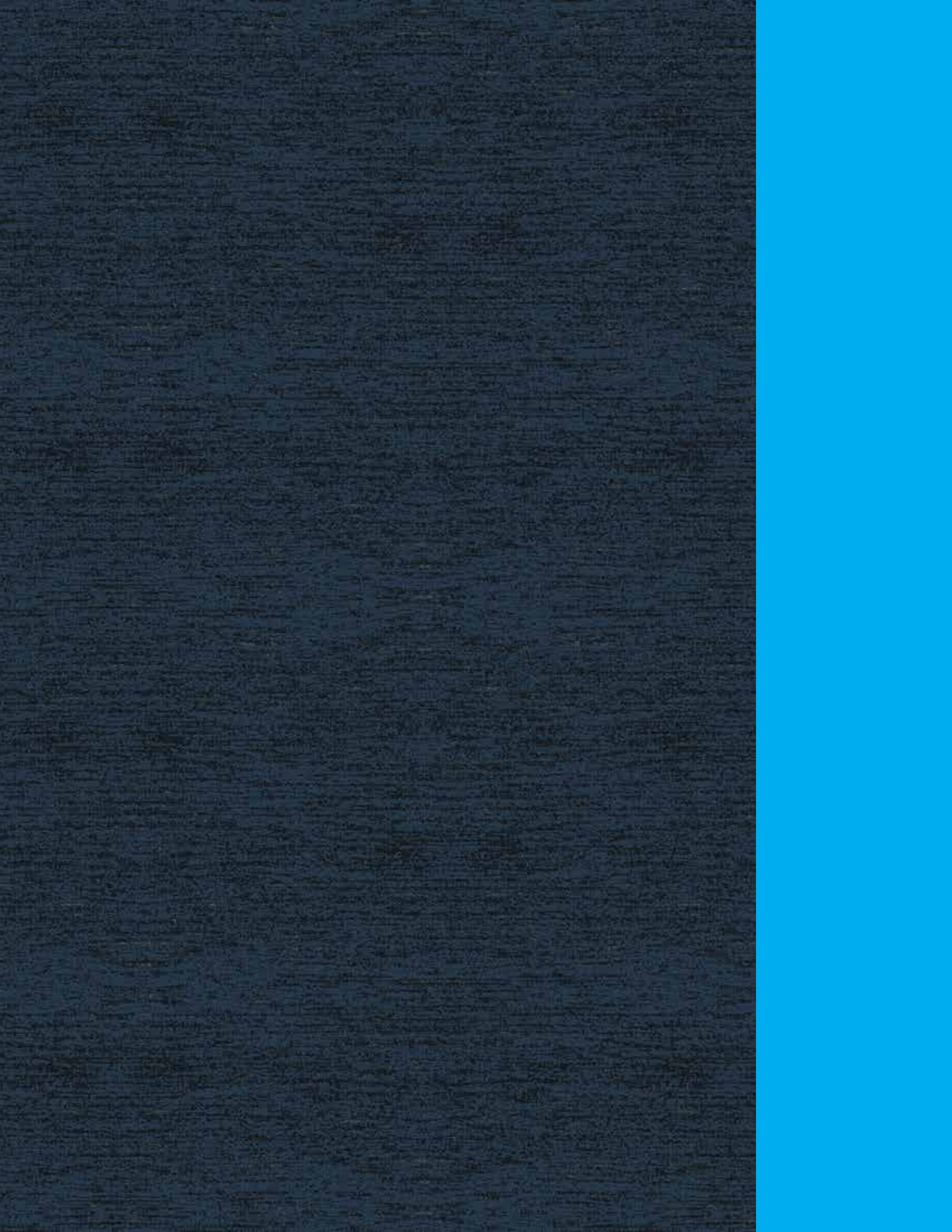
Width: 15 ft.

Radiant Panel: Class 1

Smoke Density: Less than 450

Warranty: 10 Year Wear

Traffic Class: Heavy (Corridor/Public Areas)



PUBLIC SPACE

COLOR 268

PRODUCT SPECIFICATIONS

Product ID: CM005

Name: Composition V

Construction: Vivid - 12 Color Cut/Loop CYP)

Fiber Content: 100% C.F. Lextron Enviro-Green®
Solution Dyed Nylon

Pattern Repeat: 90" x 90"

Tufted Pile Weight: 42 oz./sq. yd.

Finished Pile Height: approx. 0.250"/0.187"/0.062"

Primary Backing: Woven Polypropylene

Secondary Backing: Unitary w/Actionbac®

Total Weight: approx. 78 oz./sq. yd.

Yarn Size: 1360/2 ply

Guage: 1/10

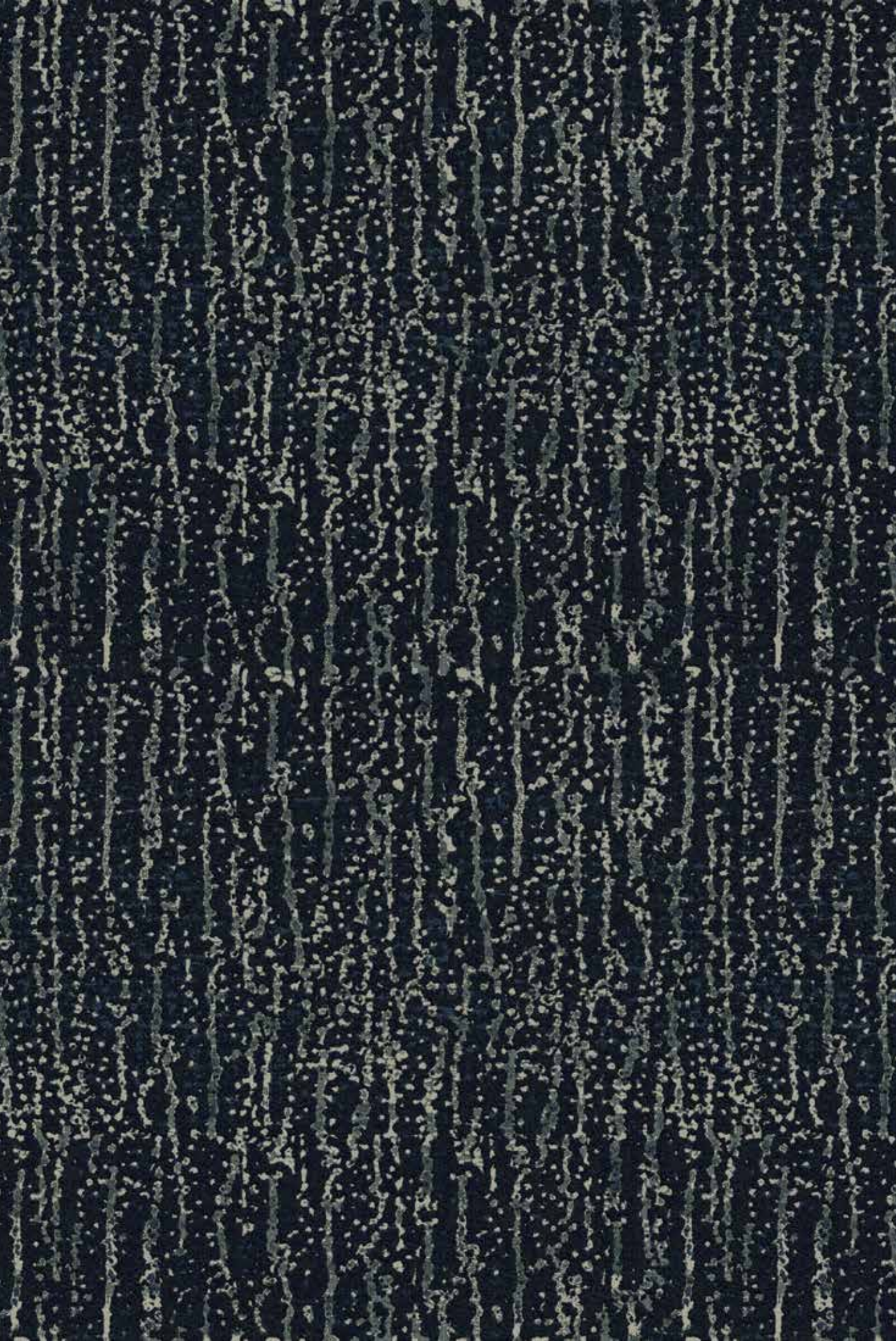
Width: 15 ft.

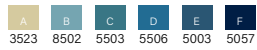
Radiant Panel: Class 1

Smoke Density: Less than 450

Warranty: 10 Year Wear

Traffic Class: Heavy (Corridor/Public Areas)



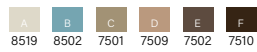
PUBLIC SPACE

COLOR 268

PRODUCT SPECIFICATIONS

Product ID:	CM006
Name:	Composition VI
Construction:	Vivid - 12 Color Cut/Loop CYP
Fiber Content:	100% C.F. Lextron Enviro-Green® Solution Dyed Nylon
Pattern Repeat:	90" x 90"
Tufted Pile Weight:	42 oz./sq. yd.
Finished Pile Height:	approx. 0.250"/0.187"/0.062"
Primary Backing:	Woven Polypropylene
Secondary Backing:	Unitary w/Actionbac®
Total Weight:	approx. 78 oz./sq. yd.
Yarn Size:	1360/2 ply
Gauge:	1/10
Width:	15 ft.
Radiant Panel:	Class 1
Smoke Density:	Less than 450
Warranty:	10 Year Wear
Traffic Class:	Heavy (Corridor/Public Areas)

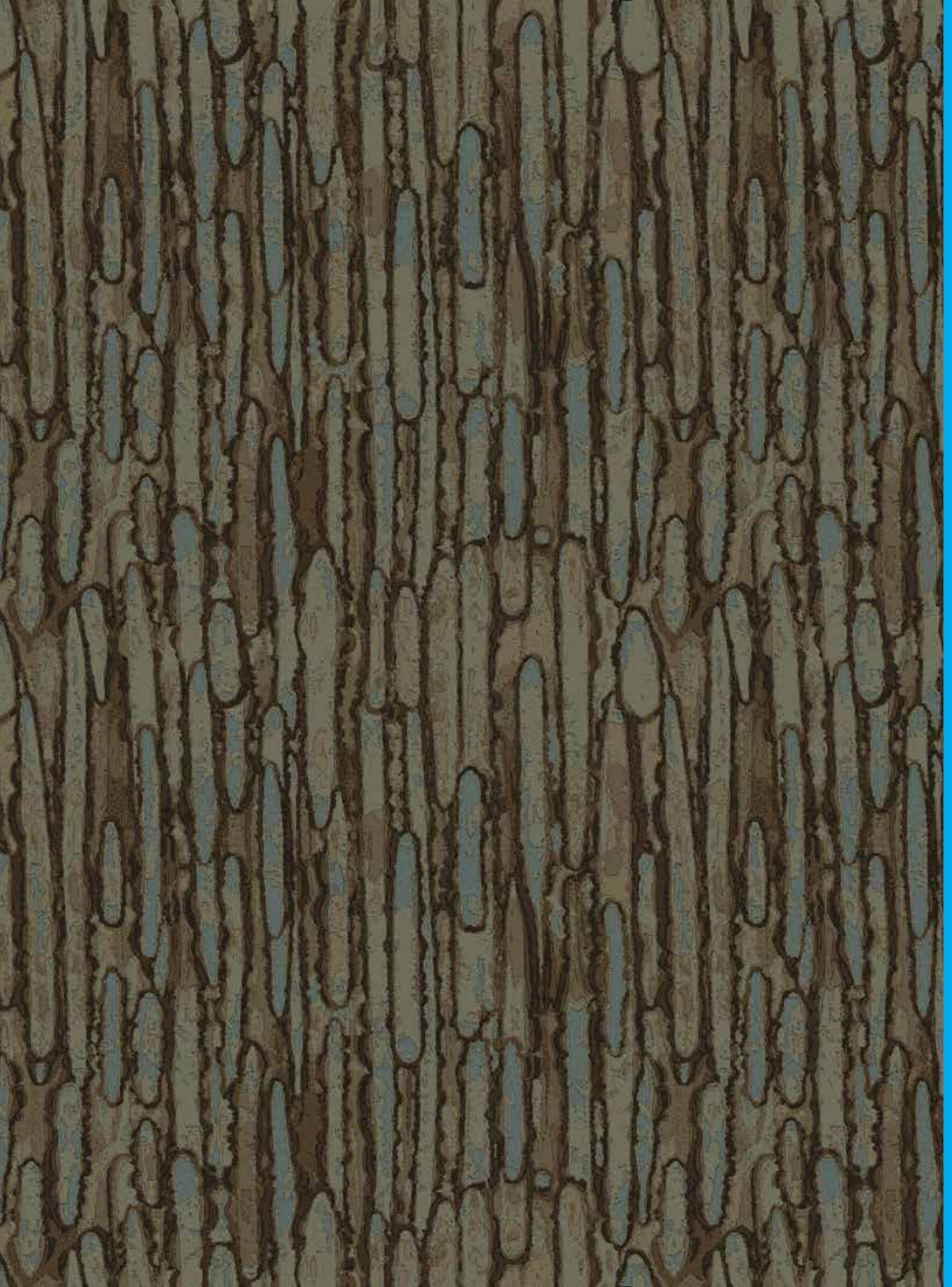


PUBLIC SPACE

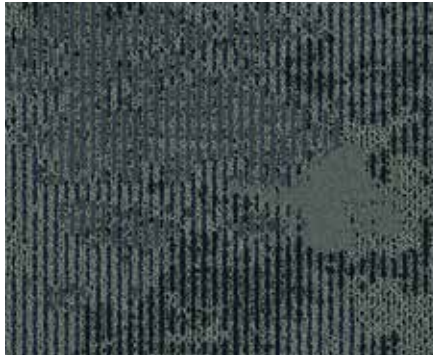
COLOR 268

PRODUCT SPECIFICATIONS

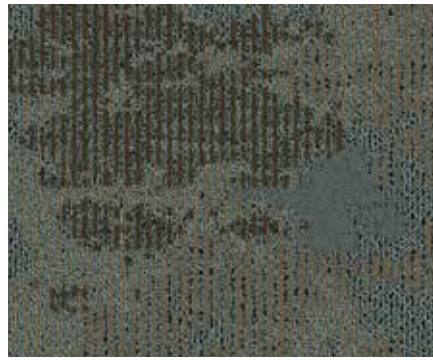
Product ID:	CM007
Name:	Composition VII
Construction:	Vivid - 12 Color Cut/Loop CYP
Fiber Content:	100% C.F. Lextron Enviro-Green® Solution Dyed Nylon
Pattern Repeat:	90" x 90"
Tufted Pile Weight:	42 oz./sq. yd.
Finished Pile Height:	approx. 0.250"/0.187"/0.062"
Primary Backing:	Woven Polypropylene
Secondary Backing:	Unitary w/Actionbac®
Total Weight:	approx. 78 oz./sq. yd.
Yarn Size:	1360/2 ply
Gauge:	1/10
Width:	15 ft.
Radiant Panel:	Class 1
Smoke Density:	Less than 450
Warranty:	10 Year Wear
Traffic Class:	Heavy (Corridor/Public Areas)



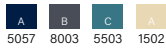
GUESTROOM



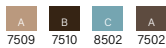
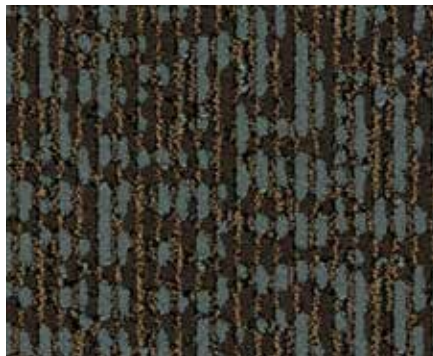
COLOR 368



COLOR 396



COLOR 368



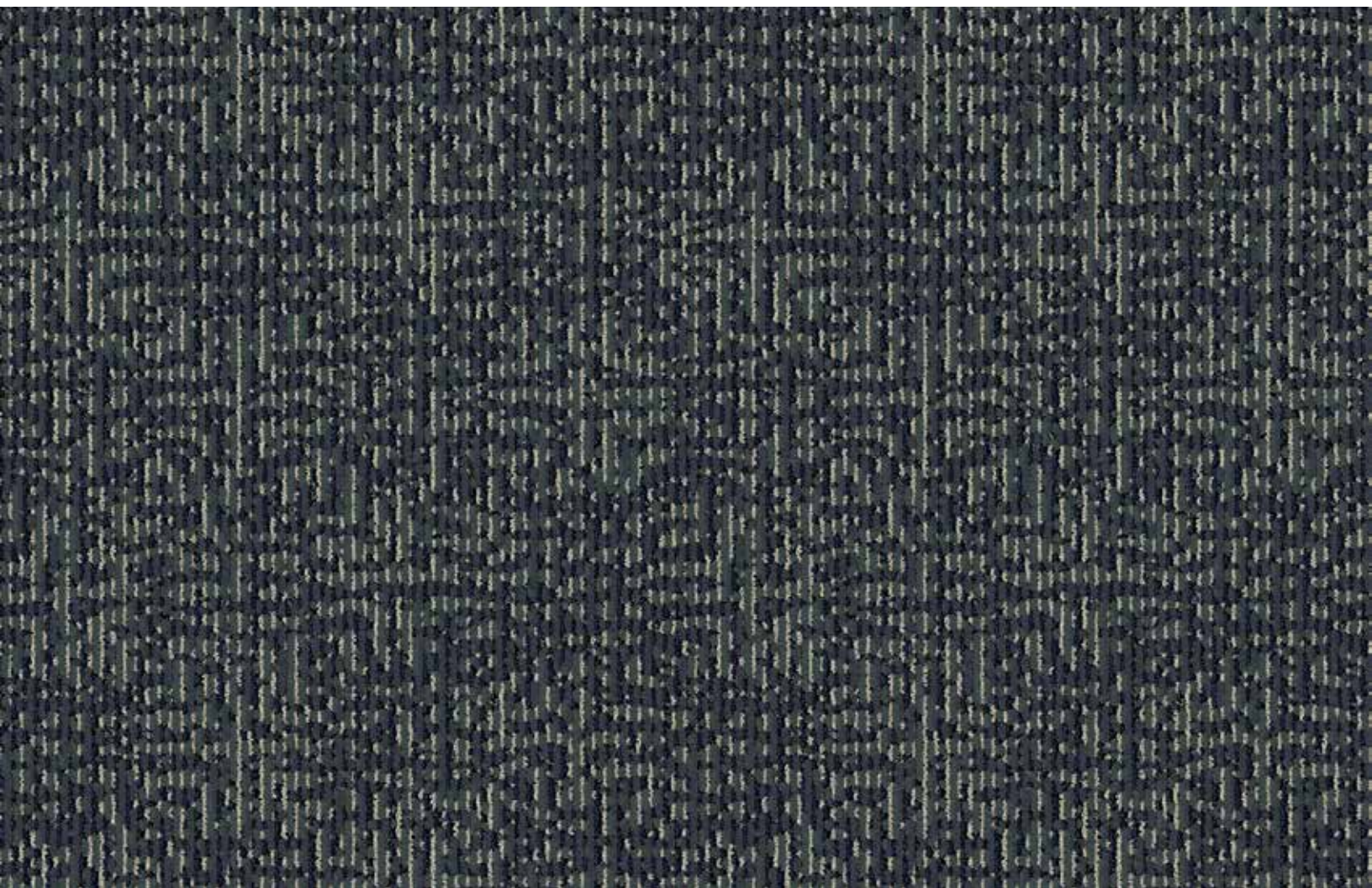
COLOR 396

PRODUCT SPECIFICATIONS

- Product ID: CM008
- Name: Composition VIII
- Construction: Dynamics - Servo-Loop Scroll Tip Shear
- Fiber Content: 100% C.F. Lextron Enviro-Green® Solution Dyed Nylon
- Pattern Repeat: 48" x 48"
- Tufted Pile Weight: 32 oz./sq. yd.
- Finished Pile Height: approx. 0.250"/0.187"/0.062"
- Primary Backing: Woven Polypropylene
- Secondary Backing: Unitary w/Actionbac®
- Total Weight: approx. 68 oz./sq. yd.
- Yarn Size: 1360/2 ply
- Gauge: 1/10
- Width: 15 ft.
- Radiant Panel: Class 1
- Smoke Density: Less than 450
- Warranty: 10 Year Wear
- Traffic Class: Moderate (Room)

PRODUCT SPECIFICATIONS

- Product ID: CM009
- Name: Composition IX
- Construction: Dynamics - Servo-Loop Scroll Tip Shear
- Fiber Content: 100% C.F. Lextron Enviro-Green® Solution Dyed Nylon
- Pattern Repeat: 24" x 24"
- Tufted Pile Weight: 32 oz./sq. yd.
- Finished Pile Height: approx. 0.250"/0.187"/0.062"
- Primary Backing: Woven Polypropylene
- Secondary Backing: Unitary w/Actionbac®
- Total Weight: approx. 68 oz./sq. yd.
- Yarn Size: 1360/2 ply
- Gauge: 1/10
- Width: 15 ft.
- Radiant Panel: Class 1
- Smoke Density: Less than 450
- Warranty: 10 Year Wear
- Traffic Class: Moderate (Room)





Lextron Enviro Green® contains 10% pre consumer waste. CRI Green Label Plus indoor air quality testing program certification # GLP2380.

Carpet should be installed in accordance with the Carpet and Rug Institutes's Standard CRI-104. Carpet must be installed over manufacturer's recommended pad.

Pattern streaks and banding are visually apparent streaking in patterned carpet resulting from linear juxtaposition of pattern elements visible in both length and width directions. It is not a carpet defect, but is inherent in solution dyed graphic and cut and loop patterns.

All specifications are subject to normal manufacturing tolerances.

Due to the manufacturing process of a tip sheared product, the finished yarn weight will vary more than normal manufacturing tolerances and side match cannot be guaranteed.