

Sculpted Silhouettes

Custom Carpet Collection

Tarkett Hospitality
285 Kraft Drive
Dalton, GA 30721
800.871.3211
www.tarketthospitality.com

© 2024 Tarkett Hospitality

 **Tarkett** *Hospitality*

Sculpted Silhouettes

Custom Collection

Subtle and serene, carpets from the Sculpted Silhouettes collection create spaces that envelop guests in soft refinement. Like fabric draping the body, the patterns unfold in fluid movements of line and curve, contour and dimension. Crafting a bespoke experience, the custom collection touches the senses with quiet luxury.



Every step matters.

We're committed to creating a circular economy where nothing goes to waste. Take part by starting your next project with Tarkett's ReStart® flooring take-back and recycling program. The ReStart program will accept any type of soft surface or resilient flooring from any manufacturer. Join us as we innovate and collaborate towards a healthier future for this generation and those to come.



CUSTOMIZABLE

Designers can choose from Axminster woven, Digital Dye Injection (DDI), or tufted constructions, along with a variety of fiber types, textures, colors, and pile weights. The designs can also be made into custom rugs to enhance guest rooms, lobbies, and other open spaces.



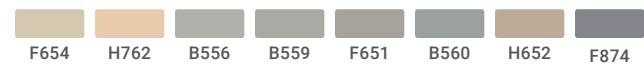


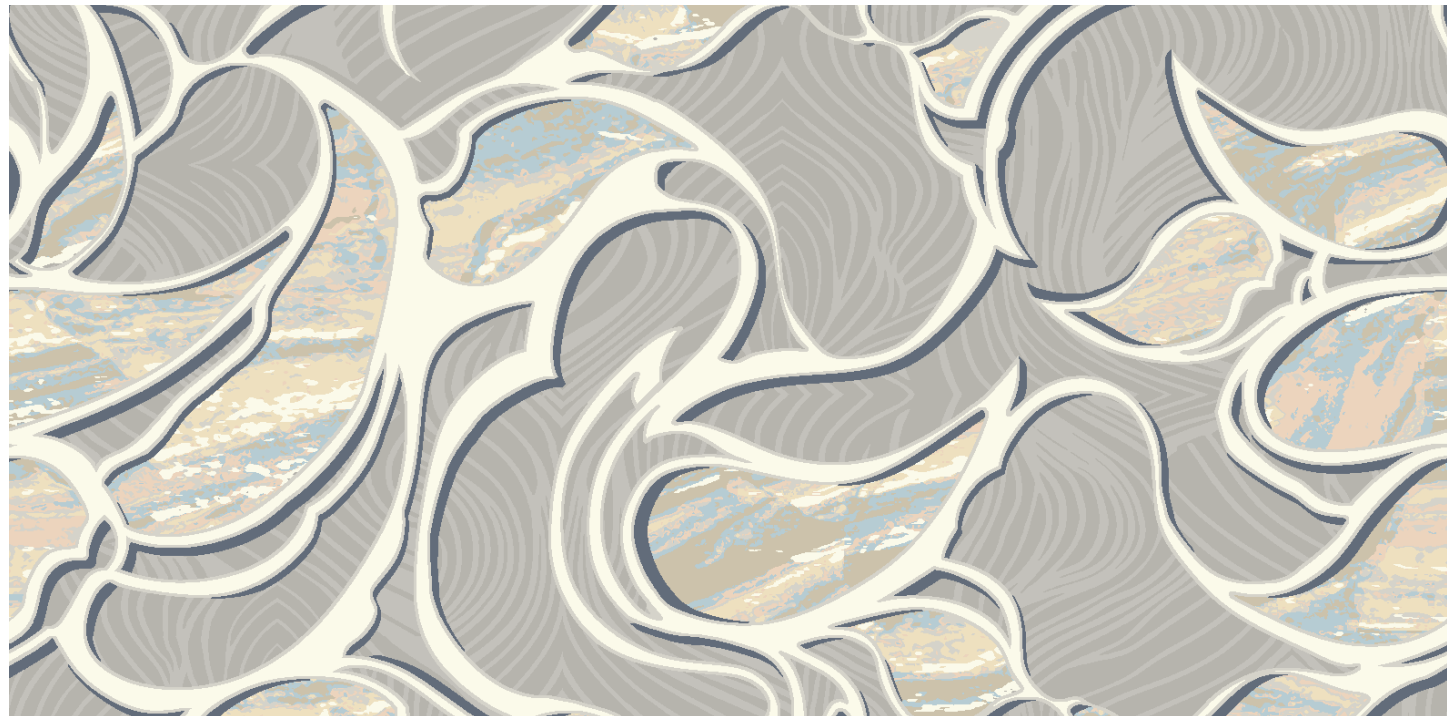
Pleat SS14X c.242 | Axminster

- | | | | | | | | | |
|------|------|------|------|------|------|------|------|------|
| | | | | | | | | |
| F655 | B559 | B556 | C551 | D551 | C653 | B653 | C658 | H652 |

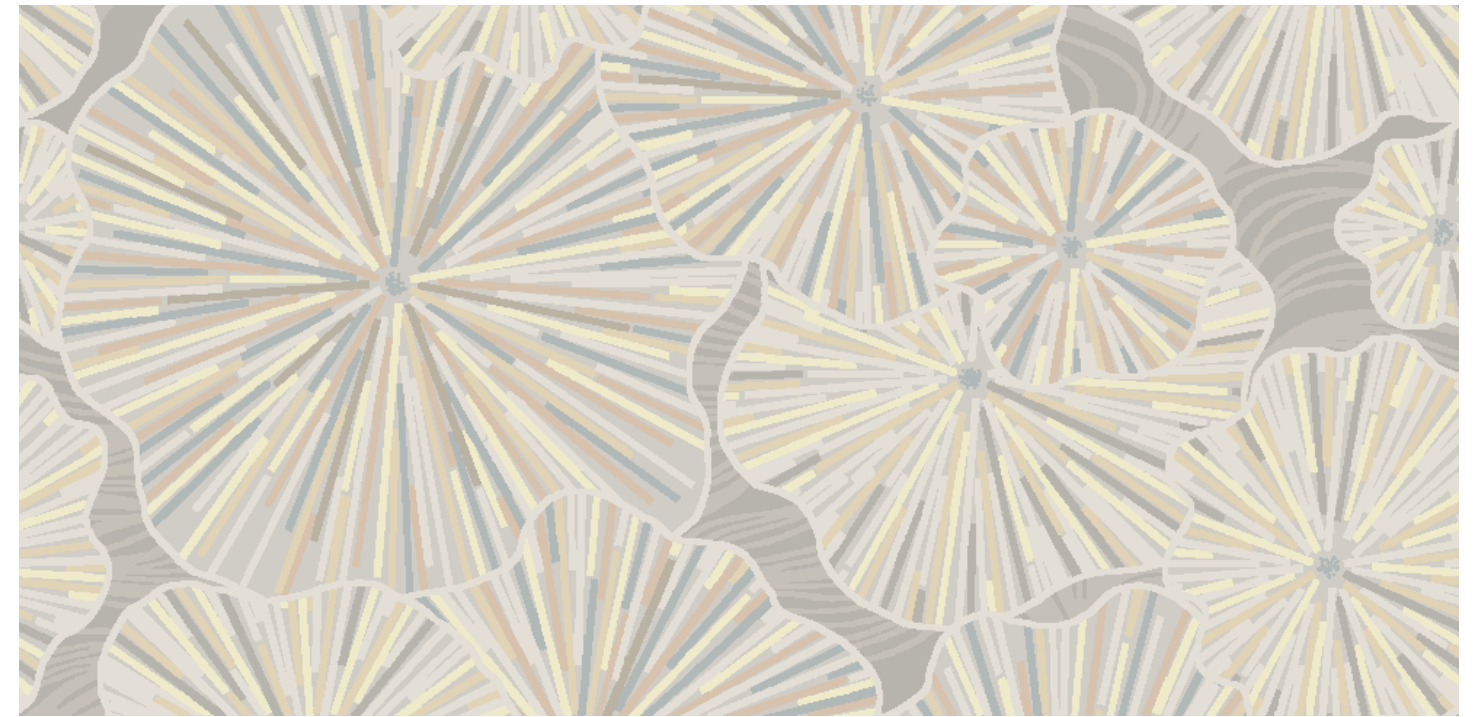
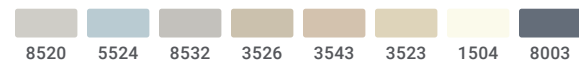


Delphos SS12X c.223 | Axminster

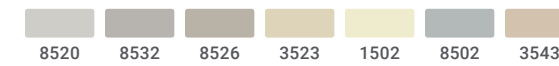




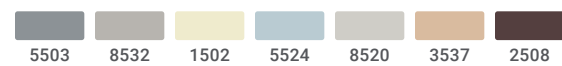
Brocade SS24V c.271 | Vivid



Bolero SS2VP c.211 | Vivid



Adorn SS7VP c.142 | Vivid



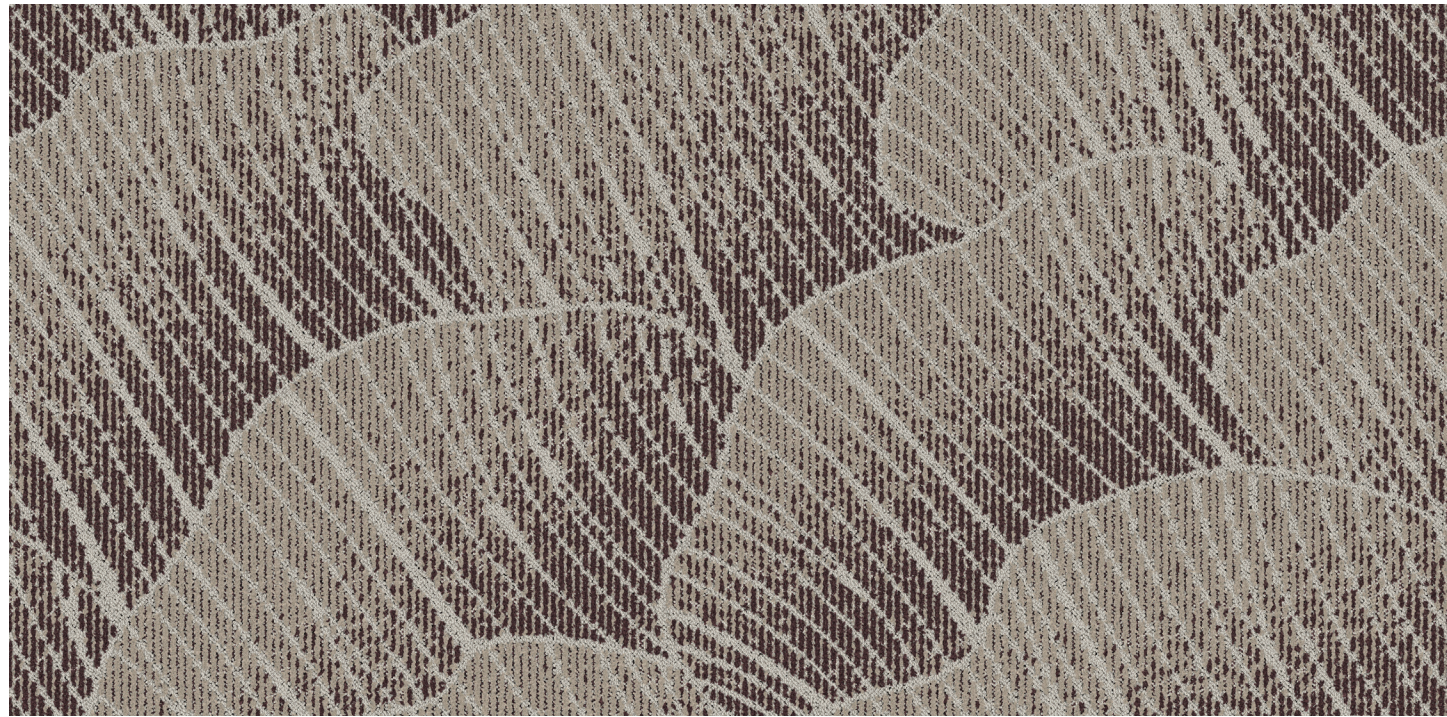
Polonaise SS32P c.221 | DDI



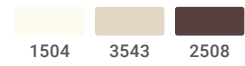


Passererie SS16X c.231 | Axminster

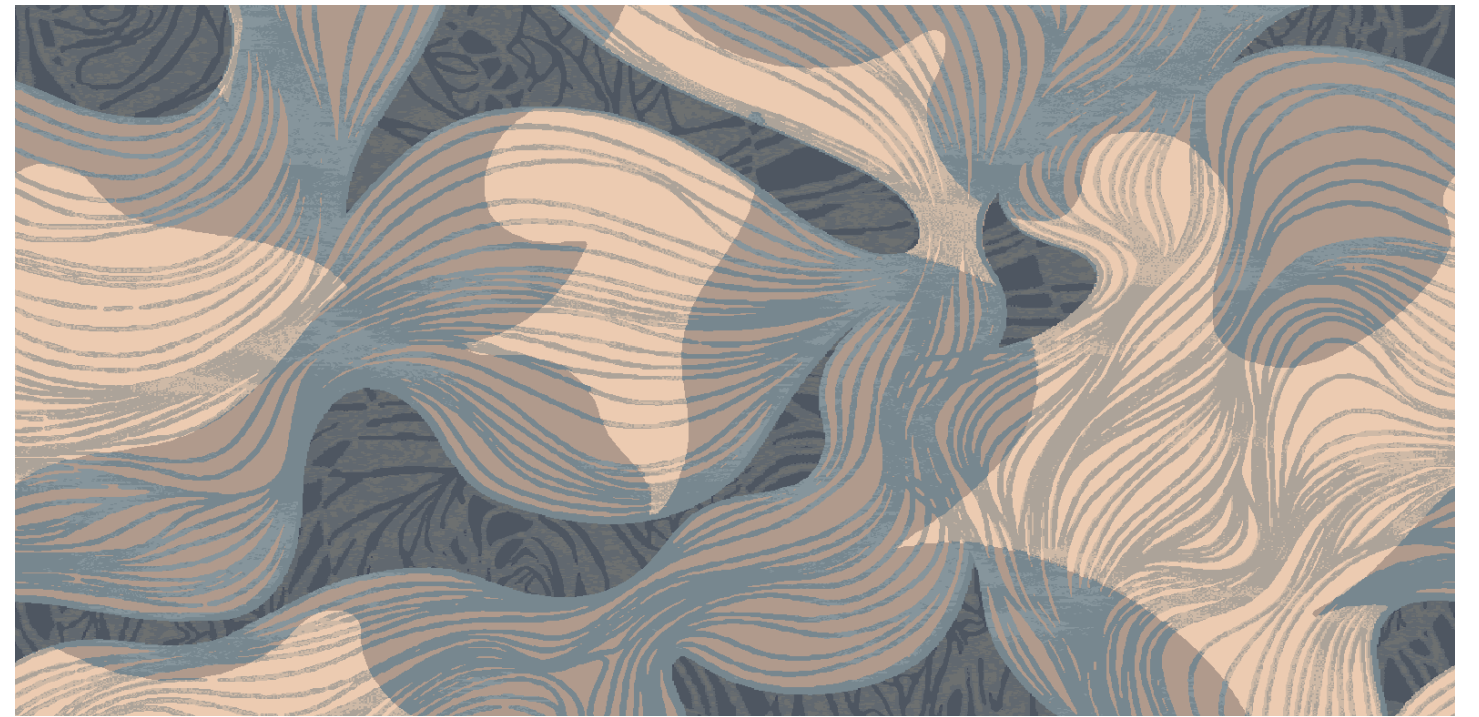




Dégradé SS34D c.161 | Dynamics



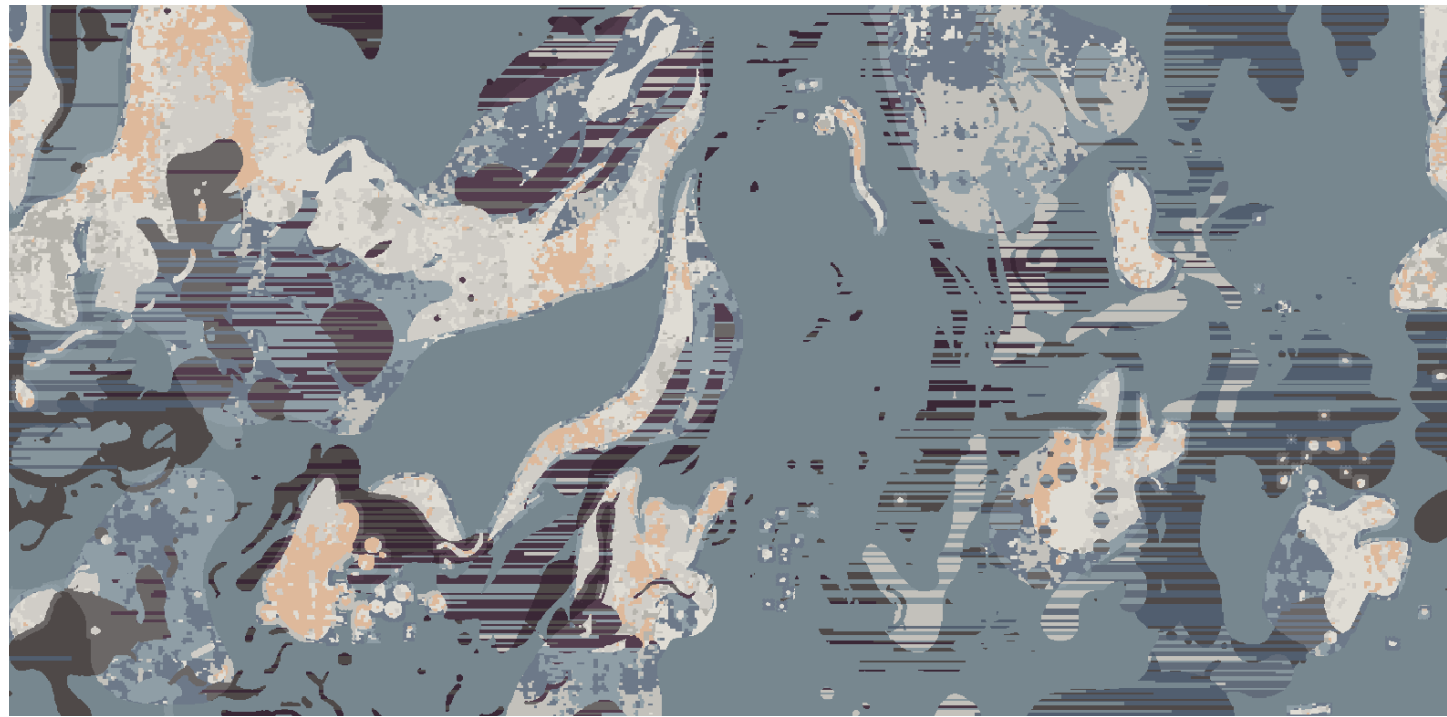
1504 3543 2508



Chiffon SS5VP c.351 | Vivid



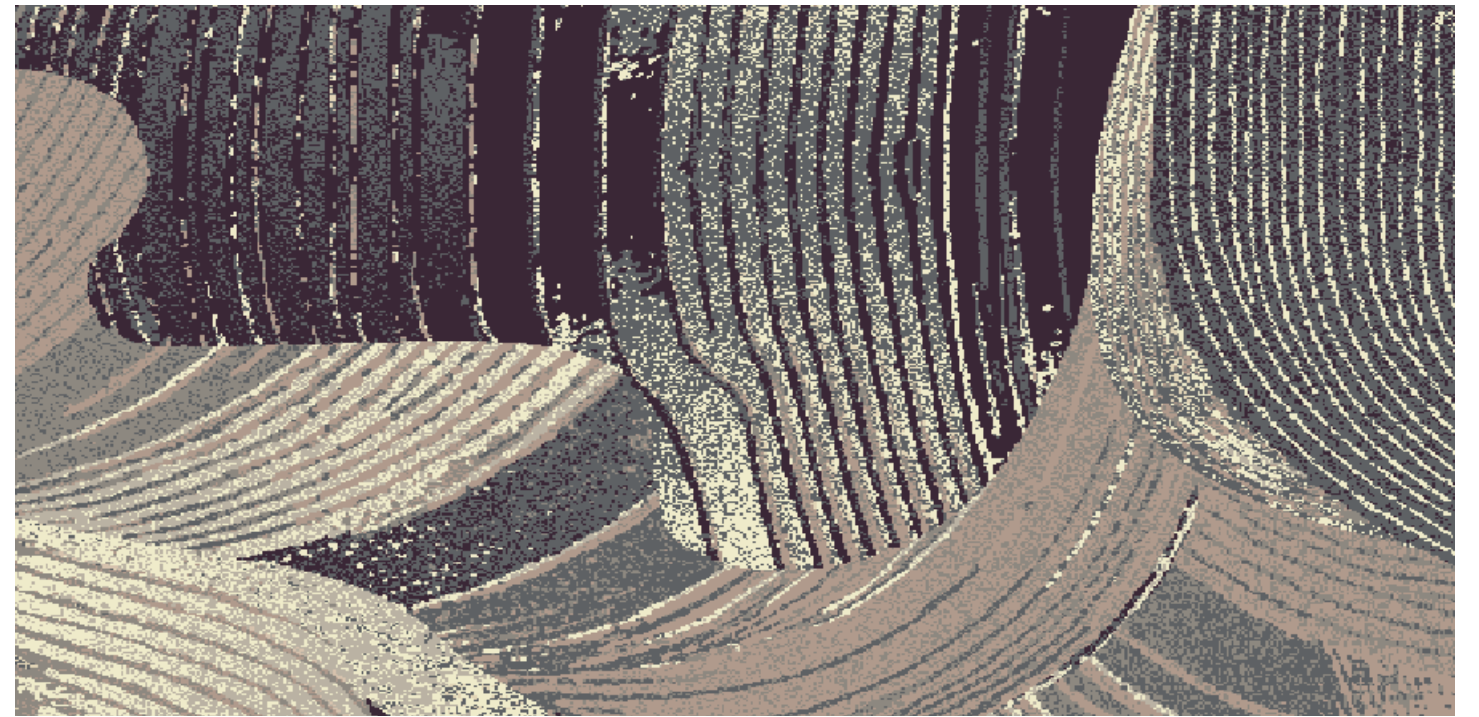
3537 X399 8501 5503 8537 8529 8518



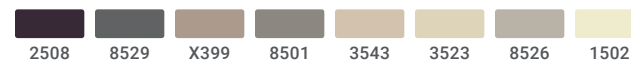
Chemise SS3VP c.261 | Vivid



8520 3537 8532 2508 5503 8003 8525



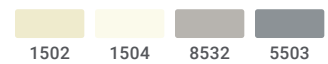
Palla SS1LP c.371 | Prestige

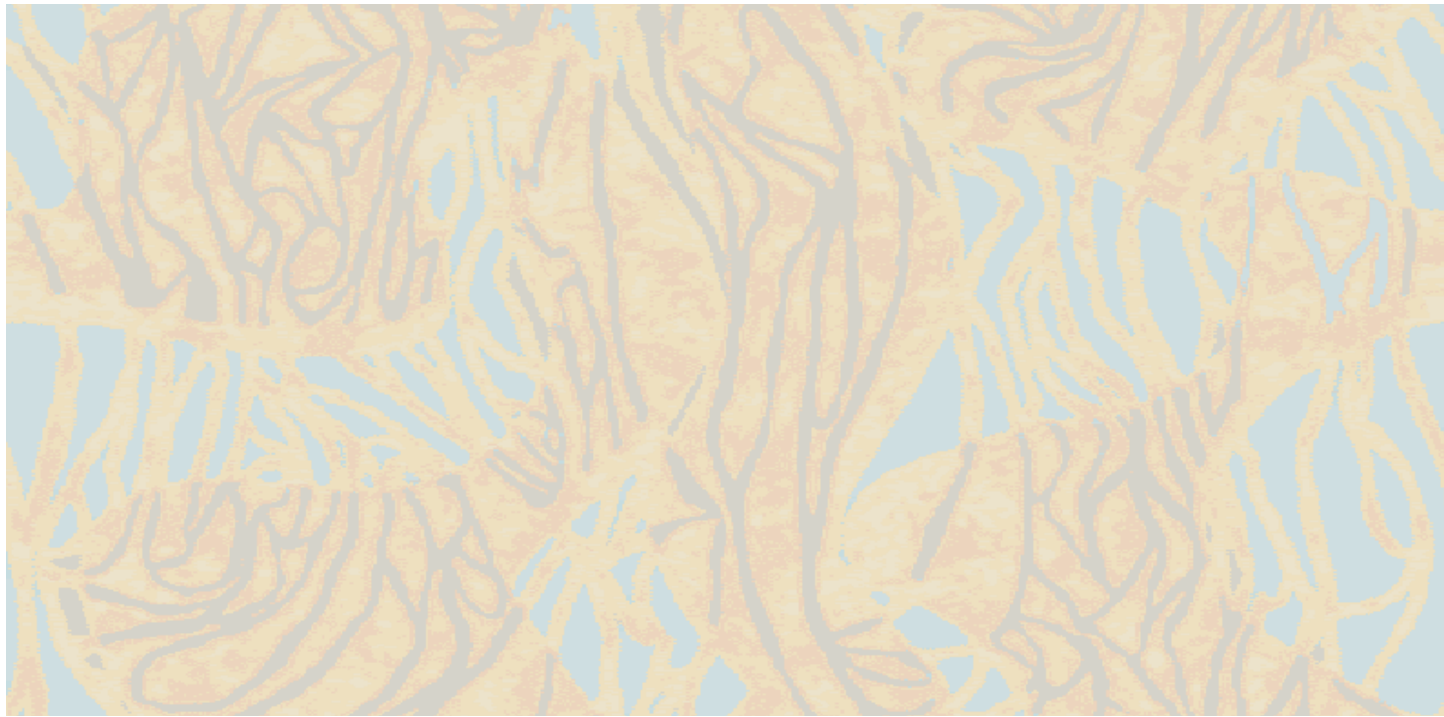


2508 8529 X399 8501 3543 3523 8526 1502

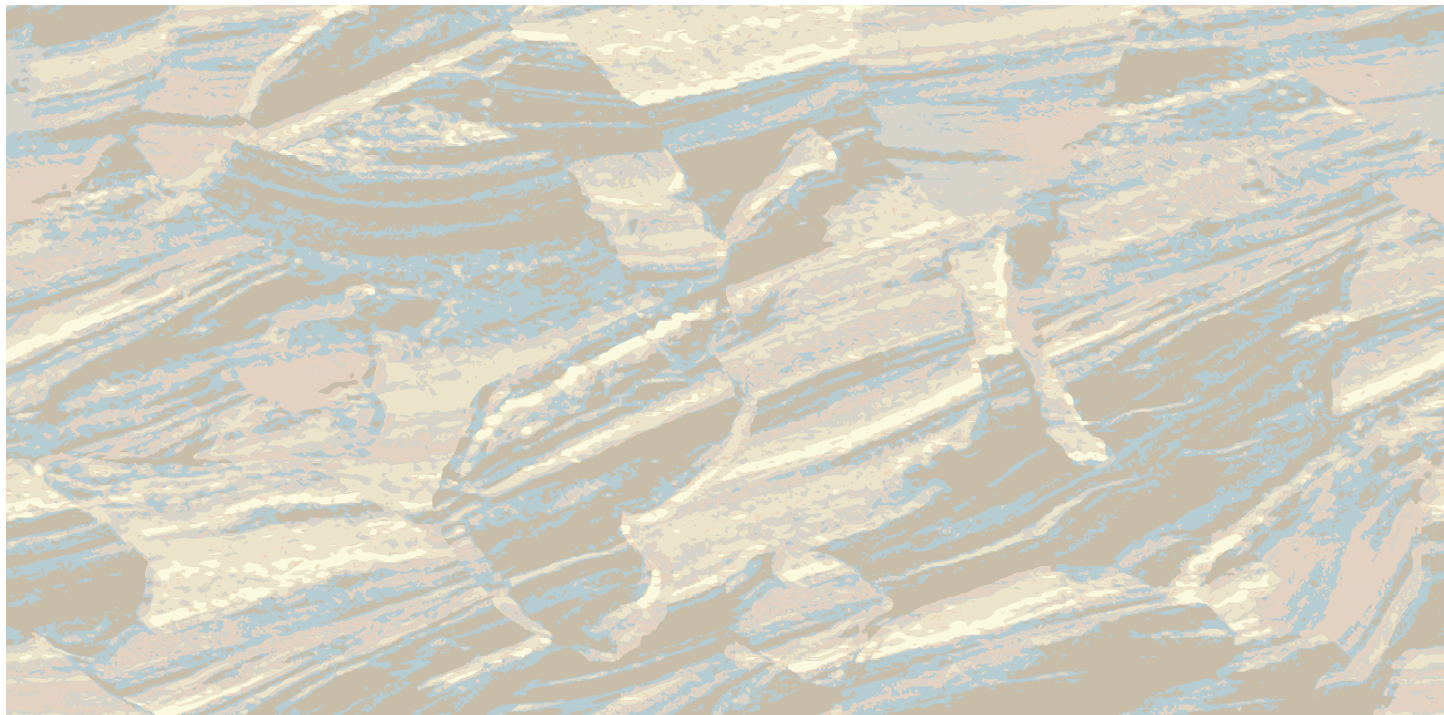
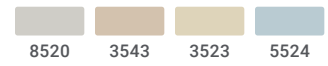


Flounce SS36N c.331 | Intrepid

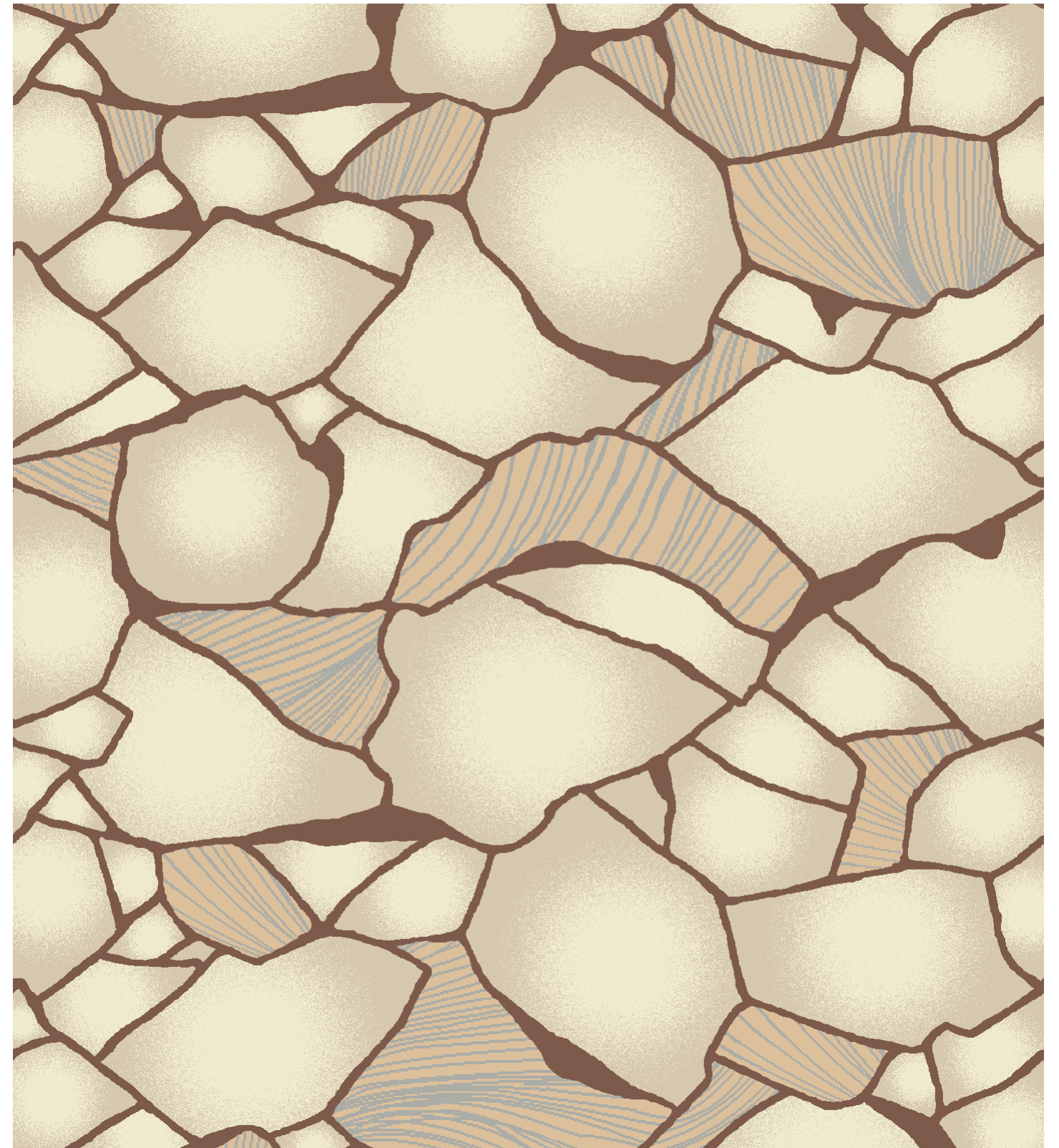
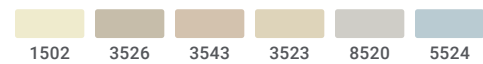




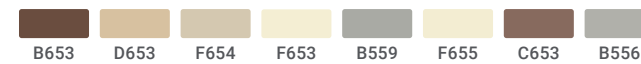
Interlace SS22V c.181 | Vivid



Ruching SS26V c.281 | Vivid



Crepe SS9HT c.261 | Hand Tufted



A suite of solutions tailored to your spaces and needs

Tarkett Hospitality offers an industry-leading range of carpet constructions that make it simple to customize your floor to fit project needs. Your carpet will deliver the right look and the right price point, with superior performance levels for the space.

Customize any of our soft surfaces, or choose a beautiful running line design. With an array of hard surface products and accessories to complement your carpet and complete the space, you are assured the right solution for every project.



Explore our Custom Design Studio for inspiration on your next custom project and view our array of running line collections at tarketthospitality.com.

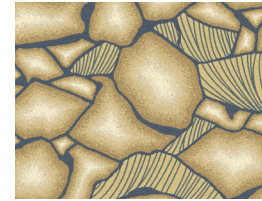


Tailored Solutions

COLOR & DETAIL

Hand-Tufted

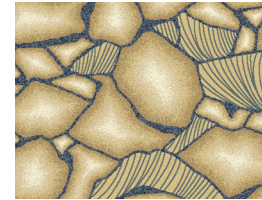
Works of art with exquisite craftsmanship, brought to life in 100% New Zealand wool. Our hand-tufted area rugs create the perfect focal point for hospitality environments, providing both comfort and eye-catching designs. Explore the vast range of palettes and textures that will help you draw guests into the unique story of your space.



		COLORS	PRICE	USAGE	OUNCE WEIGHT	LEAD TIME*	MINIMUM ORDER	TEXTURE
		Up to 24	\$\$\$\$	Public Spaces Guest Rooms Area Rugs	72-104 Oz		1 x 3 FT	Cut & Loop
		16	\$\$\$\$	Public Spaces Guest Rooms Area Rugs Carpet Tile	2&3 ply in 7-10 row		250 SY	All Cut
		2-12	\$\$\$\$	Public Spaces Corridors Guest Rooms Area Rugs	42-48 oz		250 SY	Cut & Loop
		2-8	\$\$\$	Public Spaces Corridors Guest Rooms Area Rugs	36-44 oz		250 SY	All Cut
		14	\$\$\$	Public Spaces Guest Rooms Area Rugs	36 Oz		250 SY	All Cut OR Textured Base
		2-6	\$\$	Mid-Sized Public Spaces Corridors High-End Guest Rooms Area Rugs Carpet Tile	18-48 Oz**		250 SY	Cut & Loop
		2+	\$\$	Public Spaces Corridors Guest Rooms Area Rugs Carpet Tile	18-48 Oz**		250 SY	Cut & Loop

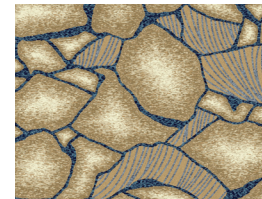
Axminster

Endless design possibilities in a luxurious woven construction, made with premium wool and nylon. Our Axminster provides superior beauty, crisp clarity and exceptional longevity. With our Sculpt technology, you can also enhance your design with multilevel texturing and depth.



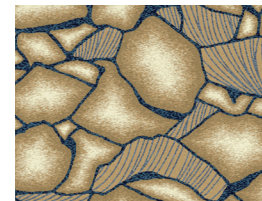
Vivid

Richly textured, beautiful patterns with high durability. Choose Vivid to create striking designs in up to 12 colors – the cut and loop tufted construction can deliver the effect of 24 colors, for patterns that are wondrously complex, textured and precise.



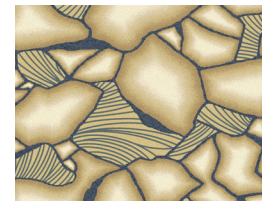
Prestige (Formerly Legacy Plus)

All-cut, large-scale pattern capabilities that deliver design flexibility and high performance, enhancing any public space. Our Prestige construction provides plush comfort and an opulent aesthetic that beautifies ballrooms and busy corridors equally well.



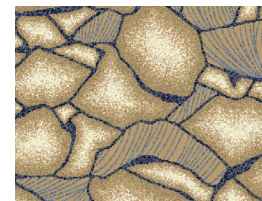
DDI (Digital Dye Injection)

Unlimited pattern potential in a durable tufted construction. Your design is deeply injected into the carpet base, with controlled color placement that creates a clear, precise pattern. Choose from cut pile or one of three cut and loop textures for added dimension.



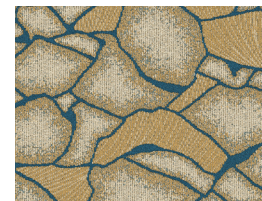
Intrepid

Detailed, clean patterns for public spaces and guest rooms, in a cut/loop or all loop construction that enhances the texture of your design. With its precise patterning, the Intrepid construction gives spaces a feeling of luxury underfoot.



Dynamics

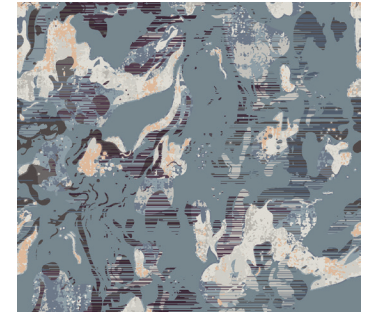
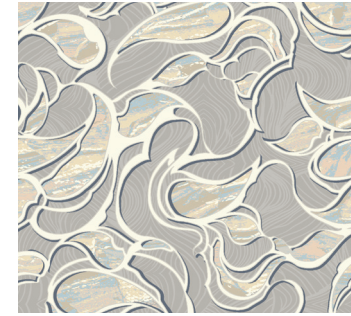
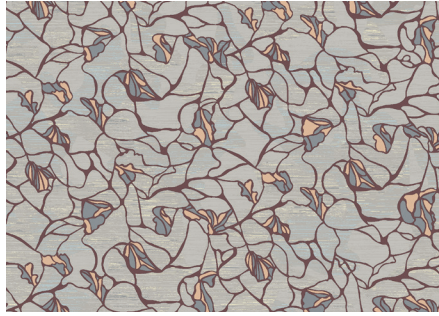
A beautiful balance of design, durability and value to suit any area, from guest rooms up to large public spaces. Dynamics provides an incredible range of tonal design possibilities, as well as an infinite play in pile heights to give spaces rich textural depth.



*Lead times are approximate and may vary.

**Ounce weight capabilities can vary based on patterns and yarn type selected. Strikes may be required to confirm.

Sculpted Silhouettes Custom Carpet



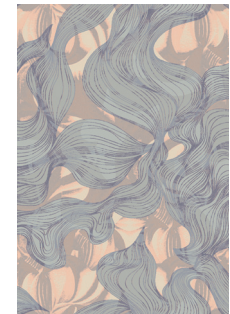
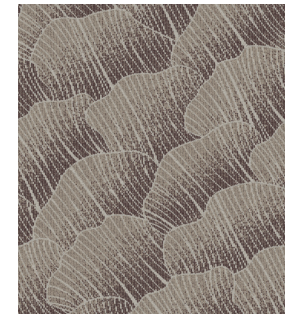
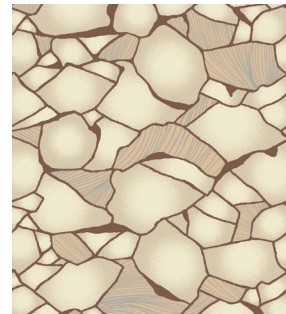
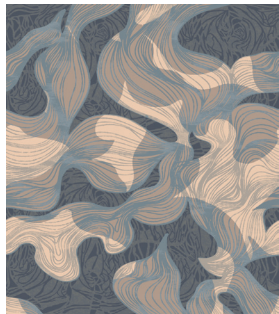
Construction: Vivid
Fiber Content: Lextron™ Enviro-Green Nylon
Dye Method: 100% Solution Dyed
Tufted Pile Weight: 42 oz Per Sq. Yard
Finished Pile Height: .281"
Quality: 11 Stitches Per Inch
Primary Backing: Woven Polypropylene
Secondary Backing: Unitary
Total Weight: 78 oz
Standard Width: 15'
Pattern Repeat: 180" x 141.09"

Bolero SS2VP c.211
 Vivid
 Lextron™ Enviro-Green Nylon
 100% Solution Dyed
 42 oz Per Sq. Yard
 .281"
 11 Stitches Per Inch
 Woven Polypropylene
 Unitary
 78 oz
 15'
 90" x 90"

Construction: Vivid
Fiber Content: Lextron™ Enviro-Green Nylon
Dye Method: 100% Solution Dyed
Tufted Pile Weight: 42 oz Per Sq. Yard
Finished Pile Height: .281"
Quality: 11 Stitches Per Inch
Primary Backing: Woven Polypropylene
Secondary Backing: Unitary
Total Weight: 78 oz
Standard Width: 12'
Pattern Repeat: 144" x 144"

Brocade SS24V c.271
 Vivid
 Lextron™ Enviro-Green Nylon
 100% Solution Dyed
 42 oz Per Sq. Yard
 .281"
 11 Stitches Per Inch
 Woven Polypropylene
 Unitary
 78 oz
 12'
 144" x 144"

Chemise SS3VP c.261
 Vivid
 Lextron™ Enviro-Green Nylon
 100% Solution Dyed
 42 oz Per Sq. Yard
 .281"
 11 Stitches Per Inch
 Woven Polypropylene
 Unitary
 78 oz
 12'
 144" x 144"



Construction: Vivid
Fiber Content: Lextron™ Enviro-Green Nylon
Dye Method: 100% Solution Dyed
Tufted Pile Weight: 42 oz Per Sq. Yard
Finished Pile Height: .281"
Quality: 11 Stitches Per Inch
Primary Backing: Woven Polypropylene
Secondary Backing: Unitary
Total Weight: 78 oz
Standard Width: 12'
Pattern Repeat: 144" x 181.82"

Crepe SS9HT c.261
 Hand Tufted
 80% NZ Wool / 20% Viscose
 Skein Dyed
 88 oz Per Sq. Yard
 .39"
 23 Row / 26 Stitches Per 10cm
 67% Cotton / 33% Polyester
 Cotton Mesh
 88 oz
 12'
 Rug Only; No pattern match

Construction: Dynamics
Fiber Content: Lextron™ Enviro-Green Nylon
Dye Method: 100% Solution Dyed
Tufted Pile Weight: 32 oz Per Sq. Yard
Finished Pile Height: .250"
Quality: 10 Stitches Per Inch
Primary Backing: Woven Polypropylene
Secondary Backing: Action Bac
Total Weight: 68 oz
Standard Width: 12'
Pattern Repeat: 72" x 90"

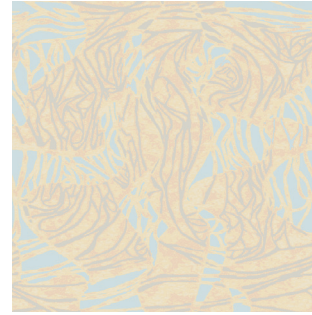
Dégradé SS34D c.161
 Dynamics
 Lextron™ Enviro-Green Nylon
 100% Solution Dyed
 32 oz Per Sq. Yard
 .250"
 10 Stitches Per Inch
 Woven Polypropylene
 Action Bac
 68 oz
 12'
 72" x 90"

Delphos SS12X c.223
 Axminster
 80% Wool / 20% Nylon
 Yarn Dyed
 40 oz Per Sq. Yard
 .280"
 9 Row / 7 Pitch
 Polypropylene
 Copolymer
 52 oz
 13' 2"
 157.71" x 200"

Sculpted Silhouettes Custom Carpet



Flounce SS36N c.331
Construction: Intrepid
Fiber Content: Lextron™ Enviro-Green Nylon
Dye Method: 100% Solution Dyed
Tufted Pile Weight: 42 oz Per Sq. Yard
Finished Pile Height: .250" High
Quality: 7 Stitches Per Inch
Primary Backing: Woven Polypropylene
Secondary Backing: Unitary
Total Weight: 78 oz
Standard Width: 15'
Pattern Repeat: 90" x 90.29"



Interlace SS22V c.181
Construction: Vivid
Fiber Content: Lextron™ Enviro-Green Nylon
Dye Method: 100% Solution Dyed
Tufted Pile Weight: 42 oz Per Sq. Yard
Finished Pile Height: .281"
Quality: 11 Stitches Per Inch
Primary Backing: Woven Polypropylene
Secondary Backing: Unitary
Total Weight: 78 oz
Standard Width: 12'
Pattern Repeat: 72" x 81.82"



Construction: Prestige
Fiber Content: Lextron™ Enviro-Green Nylon
Dye Method: 100% Solution Dyed
Tufted Pile Weight: 36 oz Per Sq. Yard
Finished Pile Height: .250"
Quality: 10 Stitches Per Inch
Primary Backing: Woven Polypropylene
Secondary Backing: Unitary
Total Weight: 72 oz
Standard Width: 15'
Pattern Repeat: 90" x 202.8"



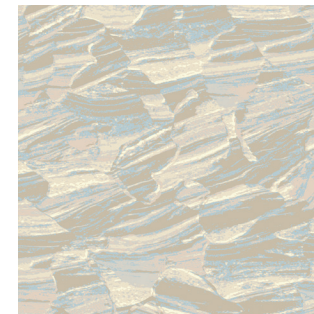
Passementerie SS16X c.231
Construction: Axminster
Fiber Content: 80% Wool / 20% Nylon
Dye Method: Yarn Dyed
Tufted Pile Weight: 40 oz Per Sq. Yard
Finished Pile Height: .280"
Quality: 9 Row / 7 Pitch
Primary Backing: Polypropylene
Secondary Backing: Copolymer
Total Weight: 52 oz
Standard Width: 13' 2"
Pattern Repeat: 78.86" x 122.22"



Pleat SS14X c.242
Construction: Axminster
Fiber Content: 80% Wool / 20% Nylon
Dye Method: Yarn Dyed
Tufted Pile Weight: 40 oz Per Sq. Yard
Finished Pile Height: .280"
Quality: 9 Row / 7 Pitch
Primary Backing: Polypropylene
Secondary Backing: Copolymer
Total Weight: 52 oz
Standard Width: 13' 2"
Pattern Repeat: 157.71" x 156.22"



Polonaise SS32P c.221
Construction: DDI
Fiber Content: Type 6 Nylon
Dye Method: Injection Dyed
Tufted Pile Weight: 36 oz Per Sq. Yard
Finished Pile Height: .250"
Quality: 13 Stitches Per Inch
Primary Backing: Woven Polypropylene
Secondary Backing: Print Base Action Bac
Total Weight: 72 oz
Standard Width: 12'
Pattern Repeat: 72" x 72"



Construction: Vivid
Fiber Content: Lextron™ Enviro-Green Nylon
Dye Method: 100% Solution Dyed
Tufted Pile Weight: 42 oz Per Sq. Yard
Finished Pile Height: .281"
Quality: 11 Stitches Per Inch
Primary Backing: Woven Polypropylene
Secondary Backing: Unitary
Total Weight: 78 oz
Standard Width: 12'
Pattern Repeat: 144" x 159.09"